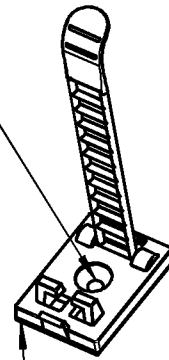
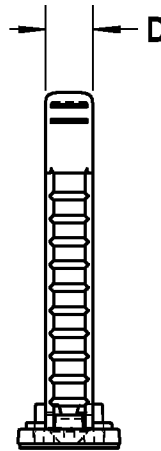
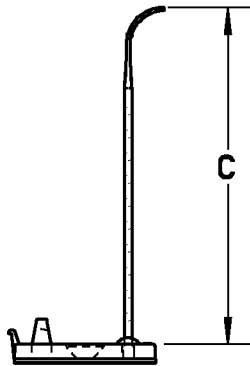
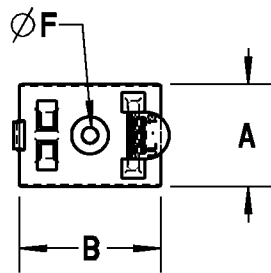


Ty-Rap



SCREW MOUNTING HOLE

ADHESIVE TAPE WITH RELEASE LINER

NOTES:

1. MATERIAL: NYLON 6,6; COLOR- GRAY
2. FLAMMABILITY: UL94V-2 (CLIP ONLY)
3. OPERATING TEMPERATURE RANGE: -40°F [-40°C] TO 185°F [85°C]
4. WIRE BUNDLE: SEE TABLE
5. LADDER STYLE FASTENER IS EASILY REMOVED AND REFASTENED
6. SYNTHETIC RUBER ADHESIVE ON CLOSED CELL POLYETHYLENE FOAM
7. OPTIONAL SCREW HOLE FOR FLAT HEAD SCREW, SEE TABLE
8. STANDARD PACKAGE QUANTITY = 100

CATALOG NUMBER	WIRE BUNDLE RANGE	A	B	C	D	ØF	SCREW SIZE
ULNY-013-8-C	.118 [2,99] - .500 [12,7]	.709 [18,00]	.984 [24,99]	.314 [7,97]	2.340 [59,43]	.110 [2,79]	#4 [M3]
ULNY-018-8-C	.197 [5,00] - .827 [21,00]	.827 [21,00]	1.180 [29,97]	.472 [11,98]	3.120 [79,24]	.110 [2,79]	#4 [M3]
ULNY-023-8-C	.275 [6,98] - .984 [24,99]	.984 [24,99]	1.380 [35,05]	.551 [13,99]	3.370 [85,59]	.135 [3,42]	#5

GENERAL NOTES

1. ALL DIMENSIONS ARE FOR REFERENCE ONLY.
2. DIMENSIONS IN BRACKETS [] ARE IN METRIC UNITS.

REVISIONS

- SEE ERN (****) FOR APPROVAL SIGNATURES & RELEASE DATE.
PROJECT NO: ****

Thomas & Betts
www.tnb.com

DESCRIPTION:

**ADJUSTABLE CABLE CLAMPS
ULNY SERIES**

ORIGINAL PROJECT NO / (ERN NO)

FM40182 / (2007167)

SHEET NO:

1 OF 1

REV. NO:

-

DRAWING NO:

WSD-000295

X-ON Electronics

Largest Supplier of Electrical and Electronic Components

Click to view similar products for [Wire Identification category](#):

Click to view products by [ABB manufacturer](#):

Other Similar products are found below :

[CU6337-000](#) [CU6342-000](#) [FCA-410-12](#) [11631010](#) [1-1768037-1](#) [1-1768037-2](#) [1-1768050-0](#) [PXLK-VI](#) [Q62184-1](#) [A64304-000](#) [QMT221](#)
[HK032WE1NF038B](#) [1330-0519-10](#) [1395199-1](#) [1395200-1](#) [1395202-1](#) [DMVF050WE-300S6](#) [D-SCE-1K-2.4-50-4-CS7834](#) [1538738-1](#)
[E90935-000](#) [EC1238-000](#) [EC1465-000](#) [EC1855-000](#) [EC1859-000](#) [EC1863-000](#) [EC5415-000](#) [EC7277-000](#) [EC7352-000](#) [EC7603-000](#)
[EC7707-000](#) [EC7735-000](#) [EC7768-000](#) [EC7828-000](#) [EC7854-000](#) [EC7952-000](#) [EC8128-000](#) [1768037-8](#) [1768041-7](#) [NC-127191-10-9](#)
[HS048WE2NF038B](#) [C03232-000](#) [HTCM-SCE-14-4H-9](#) [HTMS-3/16-9](#) [HT-SCE-1/4-2.0-4](#) [HT-SCE-3/16-2.0-4](#) [HTTMS-1/2-1.50-9](#) [HTTMS-](#)
[CM-1/2-4H-9](#) [HX-SCE-19.0-50-9](#) [HX-SCE-6.4-50-4](#) [C25254-000](#)