

# 1700 & 1750 Lever Switches 16A 250Vac Single and Double Pole



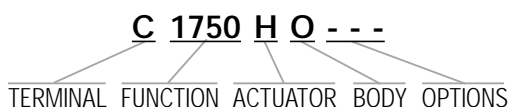
16(4)A 250Vac T85



UL 20A 250Vac Non Ind (Single pole)  
 UL 16A 250Vac Non Ind (Double pole)  
 UL CSA (2 pos types) 250Vac 1hp, 125Vac 1/2hp  
 UL CSA (3 pos types) 250Vac 1/2hp, 125Vac 1/4hp  
 CSA 16A 250Vac Non Ind  
 UL 85°C, file E45221, CSA file LR10990  
 UL and CSA N/A on momentary types

**In house test** Inrush 36A to EN61058-1 & 20A 28Vdc

Selective "A, B, C" and "Off, A, A+B" circuits at 5 amp also available  
 3mm contact gap except where marked  $\mu$   
 Technical data on pages 4 & 5



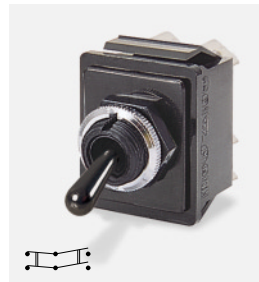
TERMINAL	FUNCTION	ACTUATOR
<b>C</b>  6.3 x 0.8	<b>Single pole</b>  <b>1700</b> ♦  ON - OFF	<b>Double pole</b>  <b>1750</b> 
<b>H</b>  4.8 x 0.8	<b>1710</b> $\mu$ ♦  ON - ON	<b>1760</b> $\mu$  
<b>K</b>  2.8 x 0.8	<b>1720</b> $\mu$ ♦  ON - OFF - ON	<b>1770</b> $\mu$  
<b>T</b>  Solder	<b>1721</b> $\mu$  ON - OFF - ON (momentary 1 side)	The switch is on between centre terminals (2 & 5) and the terminals over which the lever is positioned
<b>X</b>  PCB 0.8 Sq	<b>1722</b> $\mu$  ON - OFF - ON (momentary 2 sides)	



C1700RO ---



C1700HO ---



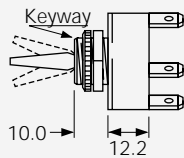
C1760RO ---



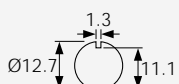
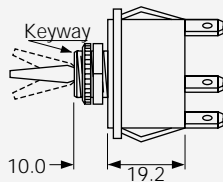
C1750HO ---

**BODY**

**0**  
Single pole



**0**  
Double pole



Panel hole (all types)

Panel thickness (Max)  
Both nuts - 3.5mm  
Less backnut - 6.5mm

**OPTIONS**

**Neck Seal M539**  
Rubber -57T145  
(H & R Actuators)  
Actuator visible



**Cover M1080**  
Rubber -57T145  
(R Actuator only)



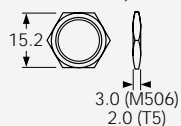
**Cover M331**  
PVC -5T85  
(R Actuator only)



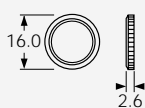
Covers have internal nylon nuts

**Fixing nuts** (Standard is M506 & T92)

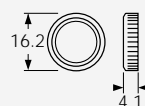
T5 Hex brass  
M506 Hex nylon



T92 Knurled brass



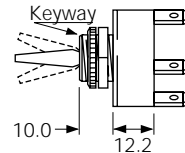
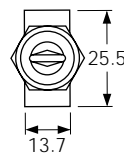
M279 Knurled nylon



**DIMENSIONS (mm)**

**Single Pole**

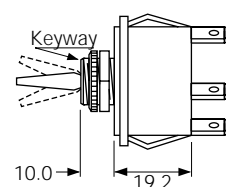
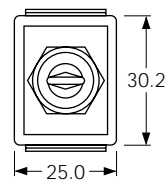
(C terminals shown)



Optional  
P232 plate  
SP or DP

**Double Pole**

(C terminals shown)



Optional terminal barrier M441 is available

## X-ON Electronics

Largest Supplier of Electrical and Electronic Components

*Click to view similar products for [Toggle Switches](#) category:*

*Click to view products by [Arcoelectric](#) manufacturer:*

Other Similar products are found below :

[A19HV](#) [8A1-C-222](#) [60012L](#) [6006L](#) [6663](#) [7101MD9V30GE](#) [7101SPDV30BE](#) [7103SDV30BE](#) [7105D](#) [7108P3YAV2BE](#) [71YY50282](#)  
[7201MD9AVBE](#) [7301K38](#) [7306K36](#) [7310K36](#) [7314K36](#) [7506K4](#) [7592K6](#) [7691K14](#) [7700K1](#) [8396K108](#) [8824K14](#) [8828K13](#) [G2VX](#) [G3VX](#)  
[PS83-121G](#) [A101MD9AB04](#) [A101SD9AB04](#) [A101SDCQ04](#) [A103SD9AQ04](#) [A107TZB04](#) [A123P32YZQ](#) [A123S1YZG](#) [A127S1YCQ](#) [1-](#)  
[1825192-0](#) [A131S1YZQ](#) [A201SCWZB04](#) [A207SYCB04](#) [A208J61ZQ0004](#) [A221K12KAG](#) [A221S1YZQ](#) [A221T1TCQ](#) [A232K12KZQ](#)  
[A232M1YCQ](#) [A323S1CWZQ](#) [A423S1CWZG-M8](#) [A423S1YZQ](#) [12149A-3V](#) [12156AX408](#) [12147AGKX679](#)