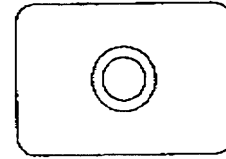
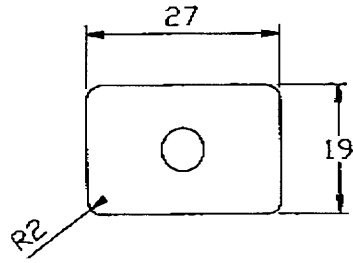
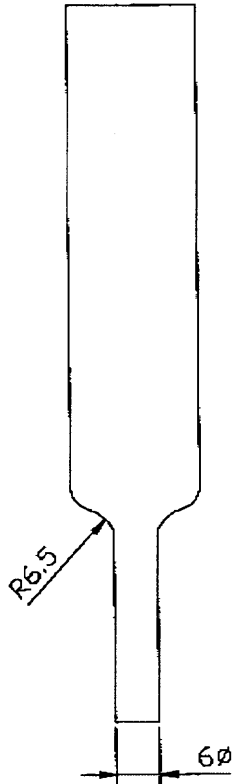
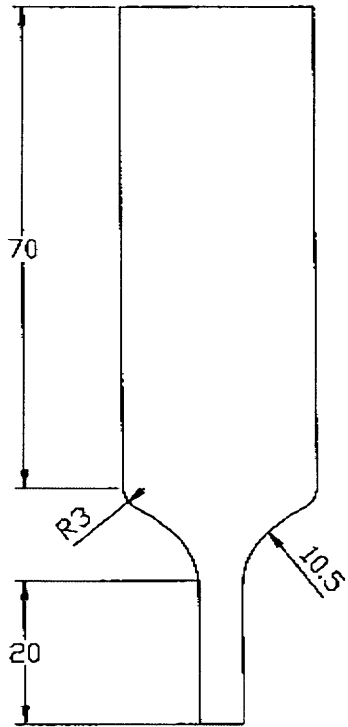


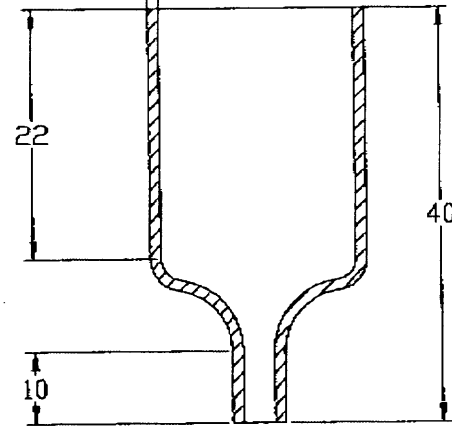
Farnell InOne 313774

CUSTOMER
 MH CONNECTORS LTD
 P/NO.
 DIP-IEC6S-BK

TOOL:
 CAST ALUMINIUM



WALL THICKNESS AT DIP LINE
 1.5mm



NOTE: DIM 40 WAS 45

General tolerance unless otherwise stated

PROD ISS 1 DC09/10/97

The contents of this drawing must not be used for any purpose without prior written permission from the owners.



TITLE
 BOOT
 60 SHORE FR
 BLACK

TOOL

MOULDING

Linear ± 0.25
 Diameter ± 0.2
 Concentricity ± 0.2
 Angular ± 0.5 Degrees
 REMOVE ALL BURRS & SHARP CORNERS TO:
 MIN 1.0 45 DEGREES
 MIN 2.0 RADIUS

WALL THICKNESS - 0.5 + 1.0
 AT DIP LINE
 DIPPED LENGTH + or - 1.5
 TRIMMED LENGTH - 0.5 + 1.5

DESIGNATION

APPROVED

CPL_REF:

313-774

X-ON Electronics

Largest Supplier of Electrical and Electronic Components

Click to view similar products for [mckee hagborg](#) manufacturer:

Other Similar products are found below :

[DIP-IMI3A-BK](#) [DIP-IEC6L-BK](#)