

Amphenol

D-Sub Connectors

D-Sub-01 Rev. 02 / 17

Amphenol

D - SUB CONNECTORS



Amphenol

Amphenol

Introduction

Amphenol M2000 Series D Sub Connectors are MIL Qualified & listed in QPL & meets the requirement of MIL-DTL-24308.

M2000 Series D Sub Connectors are subminiature rack & panel type with polarized shell & having pin/socket machined contacts which provide high reliability & density for the connectors. They are used in variety of applications due to it's versatile design where weight & dimensions are constraint factor.

Applications:

- Military
- Aerospace
- Industrial
- Information System
- Communication System

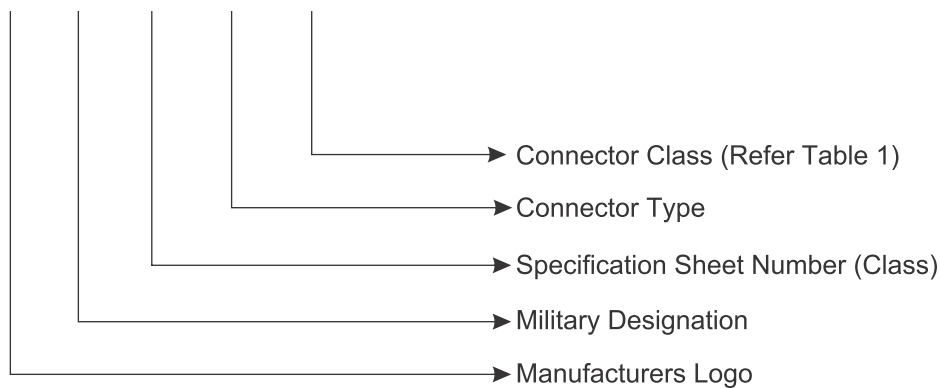
Content	Page
Introduction -----	1
Technical Specification -----	2
Ordering Information -----	2
QPL Approved Part List -----	3-11
Receptacle Plug Assembly Exploded View -----	11
Insert Arrangement For Standard D Sub Connector -----	12
PCB Layout For Standard D Sub Connector -----	13
PCB Layout For High Density D Sub Connector -----	14
Receptacle & Plug Connector -----	15-16
Contact Information for D Sub -----	17-18
D Sub Tooling -----	19-20
Special Products	
Solder Type Standard D Sub Connector (Non Environmental) -----	22
Standard D Sub Grommet Type Connector -----	23
Straight PC Tail D Sub Connector -----	24
Standard D Sub Right Angle PC Tail Connector -----	25
Standard D Sub Right Angle PC Tail Contact with Extra Length Connector ---	26-34
High Density D Sub Right Angle PC Tail Connector -----	35-38
Dust Cover -----	39

QPL-Crimp Version

Characteristics		Standard	High Density
Material	Shell	Steel / Brass	Steel / Brass
	Insulator	Thermoset/Thermoplast	Thermoset/Thermoplast
	Contact	Copper Alloy	Copper Alloy
Finish	Shell	Cadmium, Nickel, Gold	Cadmium, Nickel, Gold
	Contact	Gold Over Nickel	Gold Over Nickel
Electrical	Contact Rating	7.5A Max	7.5A Max
	Test Voltage-Max	1000 Vrms	1000 Vrms
	Insulation Resistance	≥ 5000 m Ohm	≥ 5000 m Ohm
	Contact Resistance	7.3m Ohm	7.3m Ohm
Mechanical	Insertion/Removal Force	5N Max	5N Max
	Durability	500 Cycles	500 Cycles
	Wire Gauge	AWG 20 - 28	AWG 22 - 28
Environmental	Temperature	- 55 Deg C to + 125 Deg C	- 55° C to + 125° C
	Salt Spray	48 Hrs	48 Hrs
	Damp Heat	10 Days	10 Days

Ordering Information

A M 24308 / 2 - XXX



Connector Type

2: Receptacle Connector with Polarized Shell & Socket Crimp contact.

4: Plug Connector with Polarized Shell & Pin Crimp Contact.

6: Receptacle Connector with Polarized Shell with Socket Crimp Contact (Non-Magnetic)

8: Plug Connector with Polarized shell & Pin Crimp Contact (Non-Magnetic)

Sr. No.	Military Designation	Manufacturers Designation	Type	Position	Crimp Contact	I R Tool	Shell	Finish
1	M24308/2-1F	M2000/2-1F	Standard	9	Socket	N	Steel	Cadmium YP
2	M24308/2-2F	M2000/2-2F	Standard	15	Socket	N	Steel	Cadmium YP
3	M24308/2-3F	M2000/2-3F	Standard	25	Socket	N	Steel	Cadmium YP
4	M24308/2-4F	M2000/2-4F	Standard	37	Socket	N	Steel	Cadmium YP
*5	M24308/2-5F	M2000/2-5F	Standard	50	Socket	N	Steel	Cadmium YP
6	M24308/2-6F	M2000/2-6F	Standard	9	Socket	Y	Steel	Cadmium YP
*7	M24308/2-7F	M2000/2-7F	Standard	15	Socket	Y	Steel	Cadmium YP
*8	M24308/2-8F	M2000/2-8F	Standard	25	Socket	Y	Steel	Cadmium YP
9	M24308/2-9F	M2000/2-9F	Standard	37	Socket	Y	Steel	Cadmium YP
10	M24308/2-10F	M2000/2-10F	Standard	50	Socket	Y	Steel	Cadmium YP
11	M24308/2-281F	M2000/2-281F	Standard	9	N	N	Steel	Cadmium YP
12	M24308/2-282F	M2000/2-282F	Standard	15	N	N	Steel	Cadmium YP
13	M24308/2-283F	M2000/2-283F	Standard	25	N	N	Steel	Cadmium YP
14	M24308/2-284F	M2000/2-284F	Standard	37	N	N	Steel	Cadmium YP
15	M24308/2-285F	M2000/2-285F	Standard	50	N	N	Steel	Cadmium YP
16	M24308/2-11F	M2000/2-11F	High Density	15	Socket	N	Steel	Cadmium YP
17	M24308/2-12F	M2000/2-12F	High Density	26	Socket	N	Steel	Cadmium YP
18	M24308/2-13F	M2000/2-13F	High Density	44	Socket	N	Steel	Cadmium YP
19	M24308/2-14F	M2000/2-14F	High Density	62	Socket	N	Steel	Cadmium YP
20	M24308/2-15F	M2000/2-15F	High Density	78	Socket	N	Steel	Cadmium YP
21	M24308/2-17F	M2000/2-17F	High Density	15	Socket	Y	Steel	Cadmium YP
22	M24308/2-18F	M2000/2-18F	High Density	26	Socket	Y	Steel	Cadmium YP
23	M24308/2-19F	M2000/2-19F	High Density	44	Socket	Y	Steel	Cadmium YP
24	M24308/2-20F	M2000/2-20F	High Density	62	Socket	Y	Steel	Cadmium YP
25	M24308/2-21F	M2000/2-21F	High Density	78	Socket	Y	Steel	Cadmium YP
26	M24308/2-286F	M2000/2-286F	High Density	15	N	N	Steel	Cadmium YP
27	M24308/2-287F	M2000/2-287F	High Density	26	N	N	Steel	Cadmium YP
28	M24308/2-288F	M2000/2-288F	High Density	44	N	N	Steel	Cadmium YP
29	M24308/2-289F	M2000/2-289F	High Density	62	N	N	Steel	Cadmium YP

N - Not Supplied with connector, Y - Supplied with connector, YP - Yellow Passivation

Sr. No.	Military Designation	Manufacturers Designation	Type	Position	Crimp Contact	I R Tool	Shell	Finish
30	M24308/2-290F	M2000/2-290F	Standard	78	N	N	Steel	Cadmium YP
31	M24308/2-516	M2000/2-516	Standard	9	Socket	N	Steel	Nickel
32	M24308/2-517	M2000/2-517	Standard	15	Socket	N	Steel	Nickel
33	M24308/2-518	M2000/2-518	Standard	25	Socket	N	Steel	Nickel
34	M24308/2-519	M2000/2-519	Standard	37	Socket	N	Steel	Nickel
35	M24308/2-520	M2000/2-520	Standard	50	Socket	N	Steel	Nickel
36	M24308/2-521	M2000/2-521	Standard	9	Socket	Y	Steel	Nickel
37	M24308/2-522	M2000/2-522	Standard	15	Socket	Y	Steel	Nickel
38	M24308/2-523	M2000/2-523	Standard	25	Socket	Y	Steel	Nickel
39	M24308/2-524	M2000/2-524	Standard	37	Socket	Y	Steel	Nickel
40	M24308/2-525	M2000/2-525	Standard	50	Socket	Y	Steel	Nickel
41	M24308/2-560	M2000/2-560	Standard	9	N	N	Steel	Nickel
42	M24308/2-561	M2000/2-561	Standard	15	N	N	Steel	Nickel
43	M24308/2-562	M2000/2-562	Standard	25	N	N	Steel	Nickel
44	M24308/2-563	M2000/2-563	Standard	37	N	N	Steel	Nickel
45	M24308/2-564	M2000/2-564	Standard	50	N	N	Steel	Nickel
46	M24308/2-526	M2000/2-526	High Density	15	Socket	N	Steel	Nickel
47	M24308/2-527	M2000/2-527	High Density	26	Socket	N	Steel	Nickel
48	M24308/2-528	M2000/2-528	High Density	44	Socket	N	Steel	Nickel
49	M24308/2-529	M2000/2-529	High Density	62	Socket	N	Steel	Nickel
50	M24308/2-530	M2000/2-530	High Density	78	Socket	N	Steel	Nickel
51	M24308/2-532	M2000/2-532	High Density	15	Socket	Y	Steel	Nickel
52	M24308/2-533	M2000/2-533	High Density	26	Socket	Y	Steel	Nickel
53	M24308/2-534	M2000/2-534	High Density	44	Socket	Y	Steel	Nickel
54	M24308/2-535	M2000/2-535	High Density	62	Socket	Y	Steel	Nickel
55	M24308/2-536	M2000/2-536	High Density	78	Socket	Y	Steel	Nickel
56	M24308/2-565	M2000/2-565	High Density	15	N	N	Steel	Nickel
57	M24308/2-566	M2000/2-556	High Density	26	N	N	Steel	Nickel
58	M24308/2-567	M2000/2-5567	High Density	44	N	N	Steel	Nickel

N - Not Supplied with connector, Y - Supplied with connector, YP - Yellow Passivation

Sr. No.	Military Designation	Manufacturers Designation	Type	Position	Crimp Contact	I R Tool	Shell	Finish
59	M24308/2-568	M2000/2-568	High Density	62	N	N	Steel	Nickel
60	M24308/2-569	M2000/2-569	High Density	78	N	N	Steel	Nickel
61	M24308/4-1F	M2000/4-1F	Standard	9	Pin	N	Steel	Cadmium YP
62	M24308/4-2F	M2000/4-2F	Standard	15	Pin	N	Steel	Cadmium YP
63	M24308/4-3F	M2000/4-3F	Standard	25	Pin	N	Steel	Cadmium YP
64	M24308/4-4F	M2000/4-4F	Standard	37	Pin	N	Steel	Cadmium YP
65	M24308/4-5F	M2000/4-5F	Standard	50	Pin	N	Steel	Cadmium YP
66	M24308/4-6F	M2000/4-6F	Standard	9	Pin	Y	Steel	Cadmium YP
67	M24308/4-7F	M2000/4-7F	Standard	15	Pin	Y	Steel	Cadmium YP
68	M24308/4-8F	M2000/4-8F	Standard	25	Pin	Y	Steel	Cadmium YP
69	M24308/4-9F	M2000/4-9F	Standard	37	Pin	Y	Steel	Cadmium YP
70	M24308/4-10F	M2000/4-10F	Standard	50	Pin	Y	Steel	Cadmium YP
71	M24308/4-259F	M2000/4-259F	Standard	9	N	N	Steel	Cadmium YP
72	M24308/4-260F	M2000/4-260F	Standard	15	N	N	Steel	Cadmium YP
73	M24308/4-261F	M2000/4-261F	Standard	25	N	N	Steel	Cadmium YP
74	M24308/4-262F	M2000/4-262F	Standard	37	N	N	Steel	Cadmium YP
75	M24308/4-263F	M2000/4-263F	Standard	50	N	N	Steel	Cadmium YP
76	M24308/4-11F	M2000/4-11F	High Density	15	Pin	N	Steel	Cadmium YP
77	M24308/4-12F	M2000/4-12F	High Density	26	Pin	N	Steel	Cadmium YP
78	M24308/4-13F	M2000/4-13F	High Density	44	Pin	N	Steel	Cadmium YP
79	M24308/4-14F	M2000/4-14F	High Density	62	Pin	N	Steel	Cadmium YP
80	M24308/4-15F	M2000/4-15F	High Density	78	Pin	N	Steel	Cadmium YP
81	M24308/4-17F	M2000/4-17F	High Density	15	Pin	Y	Steel	Cadmium YP
82	M24308/4-18F	M2000/4-18F	High Density	26	Pin	Y	Steel	Cadmium YP
83	M24308/4-19F	M2000/4-19F	High Density	44	Pin	Y	Steel	Cadmium YP
84	M24308/4-20F	M2000/4-20F	High Density	62	Pin	Y	Steel	Cadmium YP
85	M24308/4-21F	M2000/4-21F	High Density	78	Pin	Y	Steel	Cadmium YP
86	M24308/4-264F	M2000/4-264F	High Density	15	N	N	Steel	Cadmium YP
87	M24308/4-265F	M2000/4-265F	High Density	26	N	N	Steel	Cadmium YP

N - Not Supplied with connector, Y - Supplied with connector, YP - Yellow Passivation

Sr. No.	Military Designation	Manufacturers Designation	Type	Position	Crimp Contact	I R Tool	Shell	Finish
88	M24308/4-266F	M2000/4-266F	High Density	44	N	N	Steel	Cadmium YP
89	M24308/4-267F	M2000/4-267F	High Density	62	N	N	Steel	Cadmium YP
90	M24308/4-268F	M2000/4-268F	High Density	78	N	N	Steel	Cadmium YP
91	M24308/4-335	M2000/4-335	Standard	9	Pin	N	Steel	Nickel
92	M24308/4-336	M2000/4-336	Standard	15	Pin	N	Steel	Nickel
93	M24308/4-337	M2000/4-337	Standard	25	Pin	N	Steel	Nickel
94	M24308/4-338	M2000/4-338	Standard	37	Pin	N	Steel	Nickel
95	M24308/4-339	M2000/4-339	Standard	50	Pin	N	Steel	Nickel
96	M24308/4-340	M2000/4-340	Standard	9	Pin	Y	Steel	Nickel
97	M24308/4-341.	M2000/4-341	Standard	15	Pin	Y	Steel	Nickel
98	M24308/4-342	M2000/4-342	Standard	25	Pin	Y	Steel	Nickel
99	M24308/4-343	M2000/4-343	Standard	37	Pin	Y	Steel	Nickel
100	M24308/4-344	M2000/4-344	Standard	50	Pin	Y	Steel	Nickel
101	M24308/4-357	M2000/4-357	Standard	9	N	N	Steel	Nickel
102	M24308/4-358	M2000/4-358	Standard	15	N	N	Steel	Nickel
103	M24308/4-359	M2000/4-359	Standard	25	N	N	Steel	Nickel
104	M24308/4-360	M2000/4-360	Standard	37	N	N	Steel	Nickel
105	M24308/4-361	M2000/4-361	Standard	50	N	N	Steel	Nickel
106	M24308/4-345	M2000/4-345	High Density	15	Pin	N	Steel	Nickel
107	M24308/4-346	M2000/4-346	High Density	26	Pin	N	Steel	Nickel
108	M24308/4-347	M2000/4-347	High Density	44	Pin	N	Steel	Nickel
109	M24308/4-348	M2000/4-348	High Density	62	Pin	N	Steel	Nickel
110	M24308/4-349	M2000/4-349	High Density	78	Pin	N	Steel	Nickel
111	M24308/4-351	M2000/4-351	High Density	15	Pin	Y	Steel	Nickel
112	M24308/4-352	M2000/4-352	High Density	26	Pin	Y	Steel	Nickel
113	M24308/4-353	M2000/4-353	High Density	44	Pin	Y	Steel	Nickel
114	M24308/4-354	M2000/4-354	High Density	62	Pin	Y	Steel	Nickel
115	M24308/4-355	M2000/4-355	High Density	78	Pin	Y	Steel	Nickel
116	M24308/4-362	M2000/4-362	High Density	15	N	N	Steel	Nickel

N - Not Supplied with connector, Y - Supplied with connector, YP - Yellow Passivation

Sr. No.	Military Designation	Manufacturers Designation	Type	Position	Crimp Contact	I R Tool	Shell	Finish
117	M24308/4-363	M2000/4-363	High Density	26	N	N	Steel	Nickel
118	M24308/4-364	M2000/4-364	High Density	44	N	N	Steel	Nickel
119	M24308/4-365	M2000/4-365	High Density	62	N	N	Steel	Nickel
120	M24308/4-366	M2000/4-366	High Density	78	N	N	Steel	Nickel
121	M24308/6-1F	M2000/6-1F	Standard	9	Socket	N	Brass	Cadmium YP
122	M24308/6-2F	M2000/6-2F	Standard	15	Socket	N	Brass	Cadmium YP
123	M24308/6-3F	M2000/6-3F	Standard	25	Socket	N	Brass	Cadmium YP
124	M24308/6-4F	M2000/6-4F	Standard	37	Socket	N	Brass	Cadmium YP
125	M24308/6-5F	M2000/6-5F	Standard	50	Socket	N	Brass	Cadmium YP
126	M24308/6-6F	M2000/6-6F	Standard	9	Socket	Y	Brass	Cadmium YP
127	M24308/6-7F	M2000/6-7F	Standard	15	Socket	Y	Brass	Cadmium YP
128	M24308/6-8F	M2000/6-8F	Standard	25	Socket	Y	Brass	Cadmium YP
129	M24308/6-9F	M2000/6-9F	Standard	37	Socket	Y	Brass	Cadmium YP
130	M24308/6-10F	M2000/6-10F	Standard	50	Socket	Y	Brass	Cadmium YP
131	M24308/6-281F	M2000/6-281F	Standard	9	N	N	Brass	Cadmium YP
132	M24308/6-282F	M2000/6-282F	Standard	15	N	N	Brass	Cadmium YP
133	M24308/6-283F	M2000/6-283F	Standard	25	N	N	Brass	Cadmium YP
134	M24308/6-284F	M2000/6-284F	Standard	37	N	N	Brass	Cadmium YP
135	M24308/6-285F	M2000/6-285F	Standard	50	N	N	Brass	Cadmium YP
136	M24308/6-11F	M2000/6-11F	High Density	15	Socket	N	Brass	Cadmium YP
137	M24308/6-12F	M2000/6-12F	High Density	26	Socket	N	Brass	Cadmium YP
138	M24308/6-13F	M2000/6-13F	High Density	44	Socket	N	Brass	Cadmium YP
139	M24308/6-14F	M2000/6-14F	High Density	62	Socket	N	Brass	Cadmium YP
140	M24308/6-15F	M2000/6-15F	High Density	78	Socket	N	Brass	Cadmium YP
141	M24308/6-17F	M2000/6-17F	High Density	15	Socket	Y	Brass	Cadmium YP
142	M24308/6-18F	M2000/6-18F	High Density	26	Socket	Y	Brass	Cadmium YP
143	M24308/6-19F	M2000/6-19F	High Density	44	Socket	Y	Brass	Cadmium YP
144	M24308/6-20F	M2000/6-20F	High Density	62	Socket	Y	Brass	Cadmium YP
145	M24308/6-21F	M2000/6-21F	High Density	78	Socket	Y	Brass	Cadmium YP

N - Not Supplied with connector, Y - Supplied with connector, YP - Yellow Passivation

Sr. No.	Military Designation	Manufacturers Designation	Type	Position	Crimp Contact	I R Tool	Shell	Finish
146	M24308/6-286F	M2000/6-286F	High Density	15	N	N	Brass	Cadmium YP
147	M24308/6-287F	M2000/6-287F	High Density	26	N	N	Brass	Cadmium YP
148	M24308/6-288F	M2000/6-288F	High Density	44	N	N	Brass	Cadmium YP
149	M24308/6-289F	M2000/6-289F	High Density	62	N	N	Brass	Cadmium YP
150	M24308/6-290F	M2000/6-290F	High Density	78	N	N	Brass	Cadmium YP
151	M24308/6-502	M2000/6-502	Standard	9	Socket	N	Brass	Gold
152	M24308/6-503	M2000/6-503	Standard	15	Socket	N	Brass	Gold
153	M24308/6-504	M2000/6-504	Standard	25	Socket	N	Brass	Gold
154	M24308/6-505	M2000/6-505	Standard	37	Socket	N	Brass	Gold
155	M24308/6-506	M2000/6-506	Standard	50	Socket	N	Brass	Gold
156	M24308/6-507	M2000/6-507	Standard	9	Socket	Y	Brass	Gold
157	M24308/6-508	M2000/6-508	Standard	15	Socket	Y	Brass	Gold
158	M24308/6-509	M2000/6-509	Standard	25	Socket	Y	Brass	Gold
159	M24308/6-510	M2000/6-510	Standard	37	Socket	Y	Brass	Gold
160	M24308/6-511	M2000/6-511	Standard	50	Socket	Y	Brass	Gold
161	M24308/6-540	M2000/6-540	Standard	9	N	N	Brass	Gold
162	M24308/6-541	M2000/6-541	Standard	15	N	N	Brass	Gold
163	M24308/6-542	M2000/6-542	Standard	25	N	N	Brass	Gold
164	M24308/6-543	M2000/6-543	Standard	37	N	N	Brass	Gold
165	M24308/6-544	M2000/6-544	Standard	50	N	N	Brass	Gold
166	M24308/6-512	M2000/6-512	High Density	15	Socket	N	Brass	Gold
167	M24308/6-513	M2000/6-513	High Density	26	Socket	N	Brass	Gold
168	M24308/6-514	M2000/6-514	High Density	44	Socket	N	Brass	Gold
169	M24308/6-515	M2000/6-515	High Density	62	Socket	N	Brass	Gold
170	M24308/6-516	M2000/6-516	High Density	78	Socket	N	Brass	Gold
171	M24308/6-518	M2000/6-518	High Density	15	Socket	Y	Brass	Gold
172	M24308/6-519	M2000/6-519	High Density	26	Socket	Y	Brass	Gold
173	M24308/6-520	M2000/6-520	High Density	44	Socket	Y	Brass	Gold
174	M24308/6-521	M2000/6-521	High Density	62	Socket	Y	Brass	Gold

N - Not Supplied with connector, Y - Supplied with connector, YP - Yellow Passivation

Sr. No.	Military Designation	Manufacturers Designation	Type	Position	Crimp Contact	I R Tool	Shell	Finish
175	M24308/6-522	M2000/6-522	High Density	78	Socket	Y	Brass	Gold
176	M24308/6-545	M2000/6-545	High Density	15	N	N	Brass	Gold
177	M24308/6-546	M2000/6-546	High Density	26	N	N	Brass	Gold
178	M24308/6-547	M2000/6-547	High Density	44	N	N	Brass	Gold
179	M24308/6-548	M2000/6-548	High Density	62	N	N	Brass	Gold
180	M24308/6-549	M2000/6-549	High Density	78	N	N	Brass	Gold
181	M24308/8-1F	M2000/8-1F	Standard	9	Pin	N	Brass	Cadmium YP
182	M24308/8-2F	M2000/8-2F	Standard	15	Pin	N	Brass	Cadmium YP
183	M24308/8-3F	M2000/8-3F	Standard	25	Pin	N	Brass	Cadmium YP
184	M24308/8-4F	M2000/8-4F	Standard	37	Pin	N	Brass	Cadmium YP
185	M24308/8-5F	M2000/8-5F	Standard	50	Pin	N	Brass	Cadmium YP
186	M24308/8-6F	M2000/8-6F	Standard	9	Pin	Y	Brass	Cadmium YP
187	M24308/8-7F	M2000/8-7F	Standard	15	Pin	Y	Brass	Cadmium YP
188	M24308/8-8F	M2000/8-8F	Standard	25	Pin	Y	Brass	Cadmium YP
189	M24308/8-9F	M2000/8-9F	Standard	37	Pin	Y	Brass	Cadmium YP
190	M24308/8-10F	M2000/8-10F	Standard	50	Pin	Y	Brass	Cadmium YP
191	M24308/8-259F	M2000/8-259F	Standard	9	N	N	Brass	Cadmium YP
192	M24308/8-260F	M2000/8-260F	Standard	15	N	N	Brass	Cadmium YP
193	M24308/8-261F	M2000/8-261F	Standard	25	N	N	Brass	Cadmium YP
194	M24308/8-262F	M2000/8-262F	Standard	37	N	N	Brass	Cadmium YP
195	M24308/8-263F	M2000/8-263F	Standard	50	N	N	Brass	Cadmium YP
196	M24308/8-11F	M2000/8-11F	High Density	15	Pin	N	Brass	Cadmium YP
197	M24308/8-12F	M2000/8-12F	High Density	26	Pin	N	Brass	Cadmium YP
198	M24308/8-13F	M2000/8-13F	High Density	44	Pin	N	Brass	Cadmium YP
199	M24308/8-14F	M2000/8-14F	High Density	62	Pin	N	Brass	Cadmium YP
200	M24308/8-15F	M2000/8-15F	High Density	78	Pin	N	Brass	Cadmium YP
201	M24308/8-17F	M2000/8-17F	High Density	15	Pin	Y	Brass	Cadmium YP
202	M24308/8-18F	M2000/8-18F	High Density	26	Pin	Y	Brass	Cadmium YP
203	M24308/8-19F	M2000/8-19F	High Density	44	Pin	Y	Brass	Cadmium YP

N - Not Supplied with connector, Y - Supplied with connector, YP - Yellow Passivation

Sr. No.	Military Designation	Manufacturers Designation	Type	Position	Crimp Contact	I R Tool	Shell	Finish
204	M24308/8-20F	M2000/8-20F	High Density	62	Pin	Y	Brass	Cadmium YP
205	M24308/8-21F	M2000/8-21F	High Density	78	Pin	Y	Brass	Cadmium YP
206	M24308/8-264F	M2000/8-264	High Density	15	N	N	Brass	Cadmium YP
207	M24308/8-265F	M2000/8-265	High Density	26	N	N	Brass	Cadmium YP
208	M24308/8-266F	M2000/8-266	High Density	44	N	N	Brass	Cadmium YP
209	M24308/8-267F	M2000/8-267	High Density	62	N	N	Brass	Cadmium YP
210	M24308/8-268F	M2000/8-268	High Density	78	N	N	Brass	Cadmium YP
211	M24308/8-335	M2000/8-335	Standard	9	Pin	N	Brass	Gold
212	M24308/8-336	M2000/8-336	Standard	15	Pin	N	Brass	Gold
213	M24308/8-337	M2000/8-337	Standard	25	Pin	N	Brass	Gold
214	M24308/8-338	M2000/8-338	Standard	37	Pin	N	Brass	Gold
215	M24308/8-339	M2000/8-339	Standard	50	Pin	N	Brass	Gold
216	M24308/8-340	M2000/8-340	Standard	9	Pin	Y	Brass	Gold
217	M24308/8-341	M2000/8-341	Standard	15	Pin	Y	Brass	Gold
218	M24308/8-342	M2000/8-342	Standard	25	Pin	Y	Brass	Gold
219	M24308/8-343	M2000/8-343	Standard	37	Pin	Y	Brass	Gold
220	M24308/8-344	M2000/8-344	Standard	50	Pin	Y	Brass	Gold
221	M24308/8-357	M2000/8-357	Standard	9	N	N	Brass	Gold
222	M24308/8-358	M2000/8-358	Standard	15	N	N	Brass	Gold
223	M24308/8-359	M2000/8-359	Standard	25	N	N	Brass	Gold
224	M24308/8-360	M2000/8-360	Standard	37	N	N	Brass	Gold
225	M24308/8-361	M2000/8-361	Standard	50	N	N	Brass	Gold
226	M24308/8-345	M2000/8-345	High Density	15	Pin	N	Brass	Gold
227	M24308/8-346	M2000/8-346	High Density	26	Pin	N	Brass	Gold
228	M24308/8-347	M2000/8-347	High Density	44	Pin	N	Brass	Gold
229	M24308/8-348	M2000/8-348	High Density	62	Pin	N	Brass	Gold
230	M24308/8-349	M2000/8-349	High Density	78	Pin	N	Brass	Gold
231	M24308/8-351	M2000/8-351	High Density	15	Pin	Y	Brass	Gold
232	M24308/8-352	M2000/8-352	High Density	26	Pin	Y	Brass	Gold

N - Not Supplied with connector, Y - Supplied with connector, YP - Yellow Passivation

Sr. No.	Military Designation	Manufacturers Designation	Type	Position	Crimp Contact	I R Tool	Shell	Finish
233	M24308/8-353	M2000/8-353	High Density	44	Pin	Y	Brass	Gold
234	M24308/8-354	M2000/8-354	High Density	62	Pin	Y	Brass	Gold
235	M24308/8-355	M2000/8-355	High Density	78	Pin	Y	Brass	Gold
236	M24308/8-362	M2000/8-362	High Density	15	N	N	Brass	Gold
237	M24308/8-363	M2000/8-363	High Density	26	N	N	Brass	Gold
238	M24308/8-364	M2000/8-364	High Density	44	N	N	Brass	Gold
239	M24308/8-365	M2000/8-365	High Density	62	N	N	Brass	Gold
240	M24308/8-366	M2000/8-366	High Density	78	N	N	Brass	Gold
241	M24308/2-1Z	M2000/2-1Z	Standard	9	Socket	N	Steel	Zinc YP
242	M24308/2-2Z	M2000/2-2Z	Standard	15	Socket	N	Steel	Zinc YP
243	M24308/2-3Z	M2000/2-3Z	Standard	25	Socket	N	Steel	Zinc YP
244	M24308/2-4Z	M2000/2-4Z	Standard	37	Socket	N	Steel	Zinc YP
245	M24308/2-5Z	M2000/2-5Z	Standard	50	Socket	N	Steel	Zinc YP
246	M24308/2-6Z	M2000/2-6Z	Standard	9	Socket	Y	Steel	Zinc YP
247	M24308/2-7Z	M2000/2-7Z	Standard	15	Socket	Y	Steel	Zinc YP
248	M24308/2-8Z	M2000/2-8Z	Standard	25	Socket	Y	Steel	Zinc YP
249	M24308/2-9Z	M2000/2-9Z	Standard	37	Socket	Y	Steel	Zinc YP
250	M24308/2-10Z	M2000/2-10Z	Standard	50	Socket	Y	Steel	Zinc YP
251	M24308/2-281Z	M2000/2-281Z	Standard	9	N	N	Steel	Zinc YP
252	M24308/2-282Z	M2000/2-282Z	Standard	15	N	N	Steel	Zinc YP
253	M24308/2-283Z	M2000/2-283Z	Standard	25	N	N	Steel	Zinc YP
254	M24308/2-284Z	M2000/2-284Z	Standard	37	N	N	Steel	Zinc YP
255	M24308/2-285Z	M2000/2-285Z	Standard	50	N	N	Steel	Zinc YP
256	M24308/2-11Z	M2000/2-11Z	High Density	15	Socket	N	Steel	Zinc YP
257	M24308/2-12Z	M2000/2-12Z	High Density	26	Socket	N	Steel	Zinc YP
258	M24308/2-13Z	M2000/2-13Z	High Density	44	Socket	N	Steel	Zinc YP
259	M24308/2-14Z	M2000/2-14Z	High Density	64	Socket	N	Steel	Zinc YP
260	M24308/2-15Z	M2000/2-15Z	High Density	78	Socket	N	Steel	Zinc YP
261	M24308/2-17Z	M2000/2-17Z	High Density	15	Socket	Y	Steel	Zinc YP
262	M24308/2-18Z	M2000/2-18Z	High Density	26	Socket	Y	Steel	Zinc YP

Sr. No.	Military Designation	Manufacturers Designation	Type	Position	Crimp Contact	I R Tool	Shell	Finish
263	M24308/2-19Z	M2000/2-19Z	High Density	44	Socket	Y	Steel	Zinc YP
264	M24308/2-20Z	M2000/2-20Z	High Density	62	Socket	Y	Steel	Zinc YP
265	M24308/2-21Z	M2000/2-21Z	High Density	78	Socket	Y	Steel	Zinc YP
266	M24308/2-286Z	M2000/2-286Z	High Density	15	N	N	Steel	Zinc YP
267	M24308/2-287Z	M2000/2-287Z	High Density	26	N	N	Steel	Zinc YP
268	M24308/2-288Z	M2000/2-288Z	High Density	44	N	N	Steel	Zinc YP
269	M24308/2-289Z	M2000/2-289Z	High Density	62	N	N	Steel	Zinc YP
270	M24308/2-290Z	M2000/2-290Z	High Density	78	N	N	Steel	Zinc YP
271	M24308/4-1Z	M2000/4-1Z	Standard	9	Pin	N	Steel	Zinc YP
272	M24308/4-2Z	M2000/4-2Z	Standard	15	Pin	N	Steel	Zinc YP
273	M24308/4-3Z	M2000/4-3Z	Standard	25	Pin	N	Steel	Zinc YP
274	M24308/4-4Z	M2000/4-4Z	Standard	37	Pin	N	Steel	Zinc YP
275	M24308/4-5Z	M2000/4-5Z	Standard	50	Pin	N	Steel	Zinc YP
276	M24308/4-6Z	M2000/4-6Z	Standard	9	Pin	Y	Steel	Zinc YP
277	M24308/4-7Z	M2000/4-7Z	Standard	15	Pin	Y	Steel	Zinc YP
278	M24308/4-8Z	M2000/4-8Z	Standard	25	Pin	Y	Steel	Zinc YP
279	M24308/4-9Z	M2000/4-9Z	Standard	37	Pin	Y	Steel	Zinc YP
280	M24308/4-10Z	M2000/4-10Z	Standard	50	Pin	Y	Steel	Zinc YP
281	M24308/4-259Z	M2000/4-259Z	Standard	9	N	N	Steel	Zinc YP
282	M24308/4-260Z	M2000/4-260Z	Standard	15	N	N	Steel	Zinc YP
283	M24308/4-261Z	M2000/4-261Z	Standard	25	N	N	Steel	Zinc YP
284	M24308/4-262Z	M2000/4-262Z	Standard	37	N	N	Steel	Zinc YP
285	M24308/4-263Z	M2000/4-263Z	Standard	50	N	N	Steel	Zinc YP
286	M24308/4-11Z	M2000/4-11Z	High Density	15	Pin	N	Steel	Zinc YP
287	M24308/4-12Z	M2000/4-12Z	High Density	26	Pin	N	Steel	Zinc YP
288	M24308/4-13Z	M2000/4-13Z	High Density	44	Pin	N	Steel	Zinc YP
289	M24308/4-14Z	M2000/4-14Z	High Density	62	Pin	N	Steel	Zinc YP
290	M24308/4-15Z	M2000/4-15Z	High Density	78	Pin	N	Steel	Zinc YP
291	M24308/4-17Z	M2000/4-17Z	High Density	15	Pin	Y	Steel	Zinc YP
292	M24308/4-18Z	M2000/4-18Z	High Density	26	Pin	Y	Steel	Zinc YP

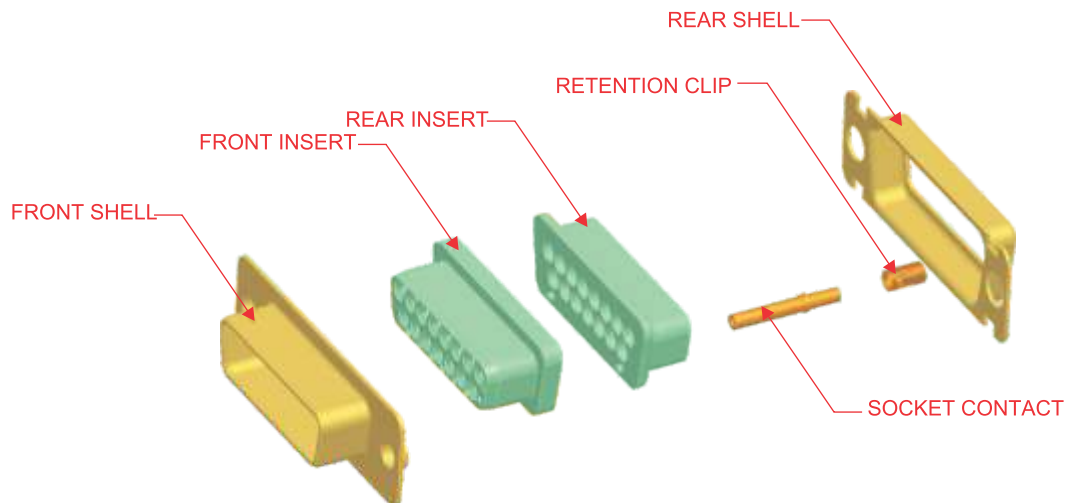
Sr. No.	Military Designation	Manufacturers Designation	Type	Position	Crimp Contact	I R Tool	Shell	Finish
293	M24308/4-19Z	M2000/4-19Z	High Density	44	Pin	Y	Steel	Zinc YP
294	M24308/4-20Z	M2000/4-20Z	High Density	62	Pin	Y	Steel	Zinc YP
295	M24308/4-21Z	M2000/4-21Z	High Density	78	Pin	Y	Steel	Zinc YP
296	M24308/4-264Z	M2000/4-264Z	High Density	15	N	N	Steel	Zinc YP
297	M24308/4-265Z	M2000/4-265Z	High Density	26	N	N	Steel	Zinc YP
298	M24308/4-266Z	M2000/4-266Z	High Density	44	N	N	Steel	Zinc YP
299	M24308/4-267Z	M2000/4-267Z	High Density	62	N	N	Steel	Zinc YP
300	M24308/4-268Z	M24308/4-268Z	High Density	78	N	N	Steel	Zinc YP
301	M24308/6-1Z	M2000/6-1Z	Standard	9	Socket	N	Brass	Zinc YP
302	M24308/6-2Z	M2000/6-2Z	Standard	15	Socket	N	Brass	Zinc YP
303	M24308/6-3Z	M2000/6-3Z	Standard	25	Socket	N	Brass	Zinc YP
304	M24308/6-4Z	M2000/6-4Z	Standard	37	Socket	N	Brass	Zinc YP
305	M24308/6-5Z	M2000/6-5Z	Standard	50	Socket	N	Brass	Zinc YP
306	M24308/6-6Z	M2000/6-6Z	Standard	9	Socket	Y	Brass	Zinc YP
307	M24308/6-7Z	M2000/6-7Z	Standard	15	Socket	Y	Brass	Zinc YP
308	M24308/6-8Z	M2000/6-8Z	Standard	25	Socket	Y	Brass	Zinc YP
309	M24308/6-9Z	M2000/6-9Z	Standard	37	Socket	Y	Brass	Zinc YP
310	M24308/6-10Z	M2000/6-10Z	Standard	50	Socket	Y	Brass	Zinc YP
311	M24308/6-281Z	M2000/6-281Z	Standard	9	N	N	Brass	Zinc YP
312	M24308/6-282Z	M2000/6-282Z	Standard	15	N	N	Brass	Zinc YP
313	M24308/6-283Z	M2000/6-283Z	Standard	25	N	N	Brass	Zinc YP
314	M24308/6-284Z	M2000/6-284Z	Standard	37	N	N	Brass	Zinc YP
315	M24308/6-285Z	M2000/6-285Z	Standard	50	N	N	Brass	Zinc YP
316	M24308/6-11Z	M2000/6-11Z	High Density	15	Socket	N	Brass	Zinc YP
317	M24308/6-12Z	M2000/6-12Z	High Density	26	Socket	N	Brass	Zinc YP
318	M24308/6-13Z	M2000/6-13Z	High Density	44	Socket	N	Brass	Zinc YP
319	M24308/6-14Z	M2000/6-14Z	High Density	62	Socket	N	Brass	Zinc YP
320	M24308/6-15Z	M2000/6-15Z	High Density	78	Socket	N	Brass	Zinc YP
321	M24308/6-17Z	M2000/6-17Z	High Density	15	Socket	Y	Brass	Zinc YP
322	M24308/6-18Z	M2000/6-18Z	High Density	26	Socket	Y	Brass	Zinc YP

Sr. No.	Military Designation	Manufacturers Designation	Type	Position	Crimp Contact	I R Tool	Shell	Finish
323	M24308/6-19Z	M2000/6-19Z	High Density	44	Socket	Y	Brass	Zinc YP
324	M24308/6-20Z	M2000/6-20Z	High Density	62	Socket	Y	Brass	Zinc YP
325	M24308/6-21Z	M2000/6-21Z	High Density	78	Socket	Y	Brass	Zinc YP
326	M24308/6-286Z	M2000/6-286Z	High Density	15	N	N	Brass	Zinc YP
327	M24308/6-287Z	M2000/6-287Z	High Density	26	N	N	Brass	Zinc YP
328	M24308/6-288Z	M2000/6-288Z	High Density	44	N	N	Brass	Zinc YP
329	M24308/6-289Z	M2000/6-289Z	High Density	62	N	N	Brass	Zinc YP
330	M24308/6-290Z	M2000/6-290Z	High Density	78	N	N	Brass	Zinc YP
331	M24308/8-1Z	M2000/8-1Z	Standard	9	Pin	N	Brass	Zinc YP
332	M24308/8-2Z	M2000/8-2Z	Standard	15	Pin	N	Brass	Zinc YP
333	M24308/8-3Z	M2000/8-3Z	Standard	25	Pin	N	Brass	Zinc YP
334	M24308/8-4Z	M2000/8-4Z	Standard	37	Pin	N	Brass	Zinc YP
335	M24308/8-5Z	M2000/8-5Z	Standard	50	Pin	N	Brass	Zinc YP
336	M24308/8-6Z	M2000/8-6Z	Standard	9	Pin	Y	Brass	Zinc YP
337	M24308/8-7Z	M2000/8-7Z	Standard	15	Pin	Y	Brass	Zinc YP
338	M24308/8-8Z	M2000/8-8Z	Standard	25	Pin	Y	Brass	Zinc YP
339	M24308/8-9Z	M24308/8-9Z	Standard	37	Pin	Y	Brass	Zinc YP
340	M24308/8-10Z	M24308/8-10Z	Standard	50	Pin	Y	Brass	Zinc YP
341	M24308/8-259Z	M2000/8-259Z	Standard	9	N	N	Brass	Zinc YP
342	M24308/8-260Z	M2000/8-260Z	Standard	15	N	N	Brass	Zinc YP
343	M24308/8-261Z	M2000/8-261Z	Standard	25	N	N	Brass	Zinc YP
344	M24308/8-262Z	M2000/8-262Z	Standard	37	N	N	Brass	Zinc YP
345	M24308/8-263Z	M2000/8-263Z	Standard	50	N	N	Brass	Zinc YP
346	M24308/8-11Z	M2000/8-11Z	High Density	15	Pin	N	Brass	Zinc YP
347	M24308/8-12Z	M2000/8-12Z	High Density	26	Pin	N	Brass	Zinc YP
348	M24308/8-13Z	M2000/8-13Z	High Density	44	Pin	N	Brass	Zinc YP
349	M24308/8-14Z	M2000/8-14Z	High Density	62	Pin	N	Brass	Zinc YP
350	M24308/8-15Z	M2000/8-15Z	High Density	78	Pin	N	Brass	Zinc YP
351	M24308/8-17Z	M2000/8-17Z	High Density	15	Pin	Y	Brass	Zinc YP
352	M24308/8-18Z	M2000/8-18Z	High Density	26	Pin	Y	Brass	Zinc YP

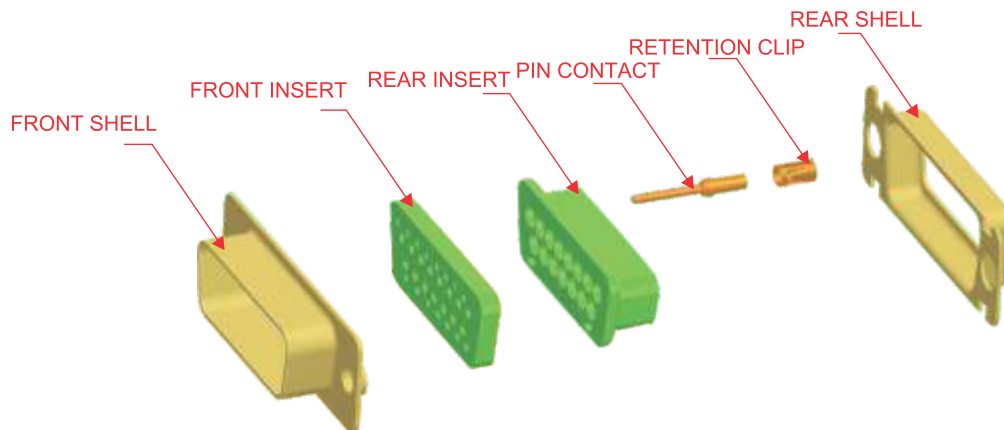
Sr. No.	Military Designation	Manufacturers Designation	Type	Position	Crimp Contact	I R Tool	Shell	Finish
353	M24308/8-19Z	M2000/8-19Z	High Density	44	Pin	Y	Brass	Zinc YP
354	M24308/8-20Z	M2000/8-20Z	High Density	62	Pin	Y	Brass	Zinc YP
355	M24308/8-21Z	M2000/8-21Z	High Density	78	Pin	Y	Brass	Zinc YP
356	M24308/8-264Z	M2000/8-264Z	High Density	15	N	N	Brass	Zinc YP
357	M24308/8-265Z	M2000/8-265Z	High Density	26	N	N	Brass	Zinc YP
358	M24308/8-266Z	M2000/8-266Z	High Density	44	N	N	Brass	Zinc YP
359	M24308/8-267Z	M2000/8-267Z	High Density	62	N	N	Brass	Zinc YP
360	M24308/8-268Z	M2000/8-268Z	High Density	78	N	N	Brass	Zinc YP

N - Not Supplied with connector, Y - Supplied with connector, YP - Yellow Passivation

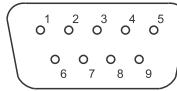
Receptacle Assembly Exploded View



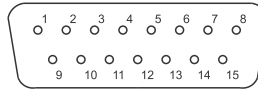
Plug Assembly Exploded View



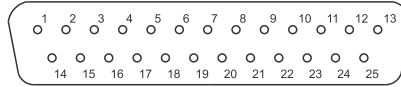
Insert Arrangement For Standard D-Sub Connectors



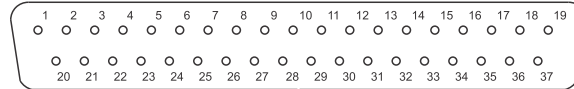
9 positions



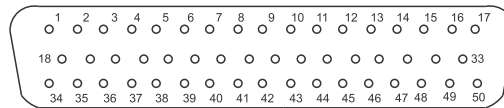
15 positions



25 positions

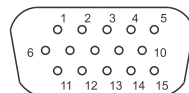


37 positions

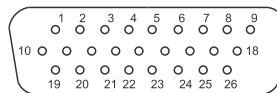


50 positions

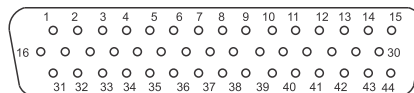
Insert Arrangement for High Density D Sub Connectors



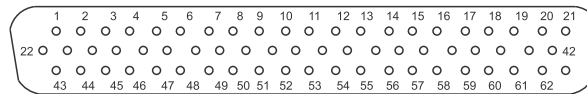
15 positions



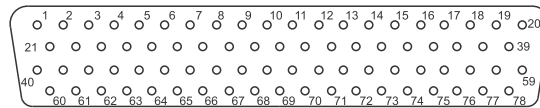
26 positions



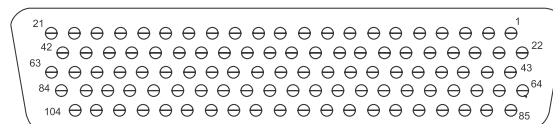
44 positions



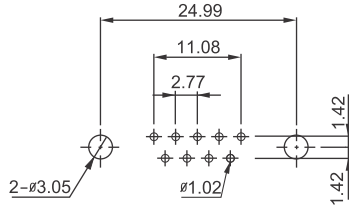
62 positions



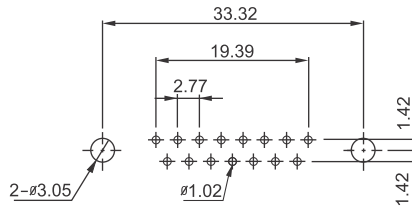
78 positions



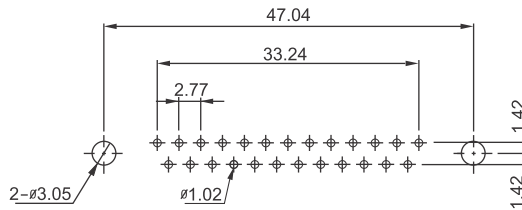
DD 104



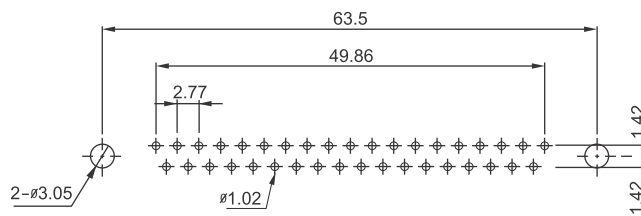
9 positions



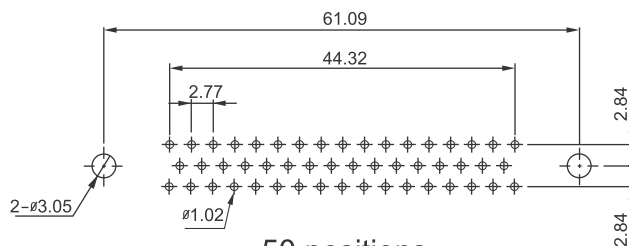
15 positions



25 positions



37 positions

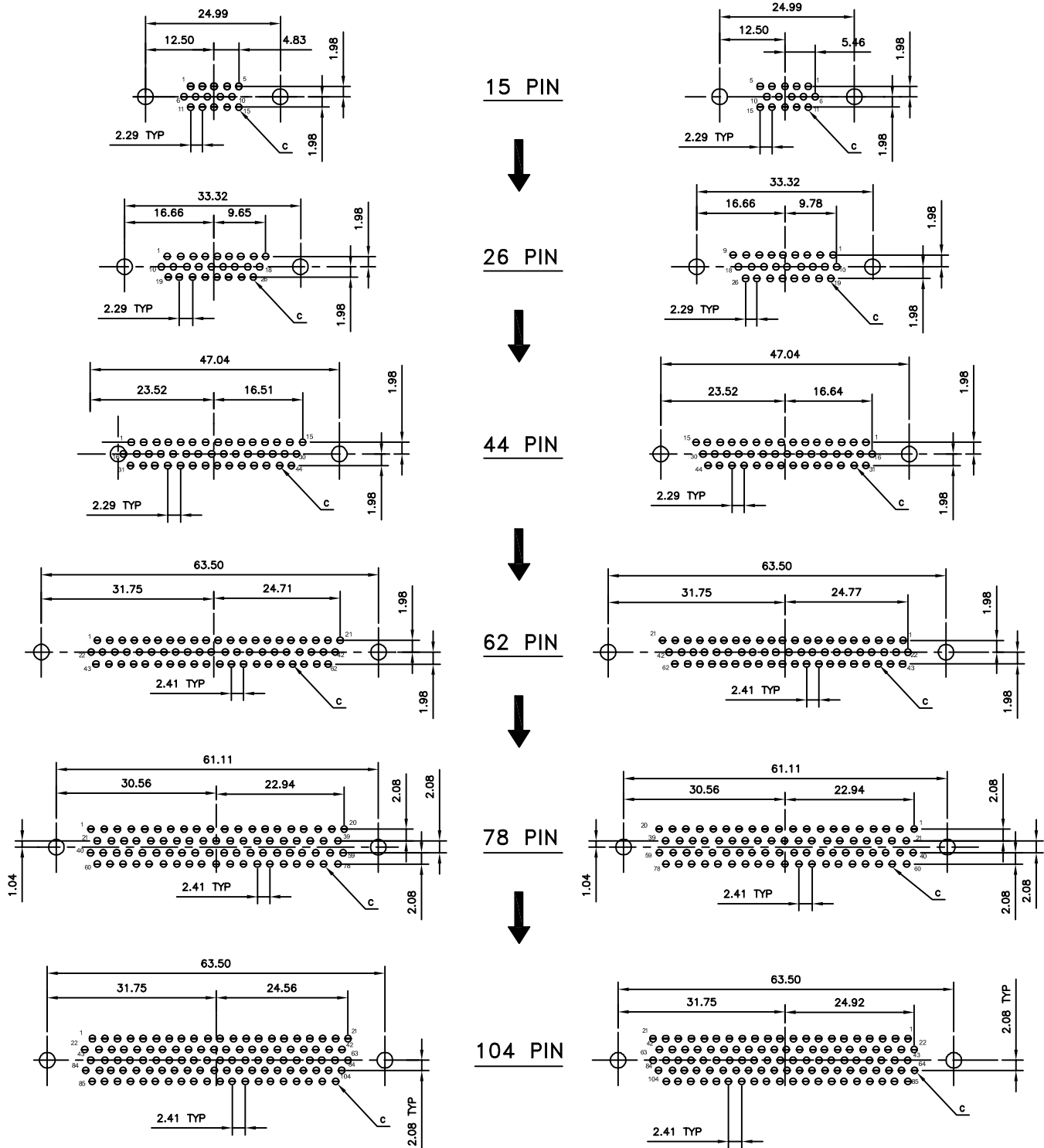


50 positions

Mount Connector With Mating Face Positioned To Direction Of Arrow

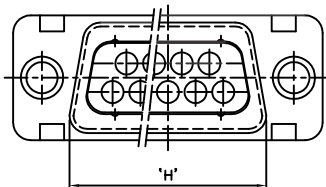
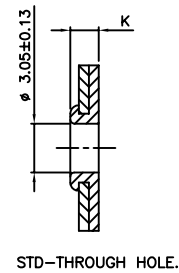
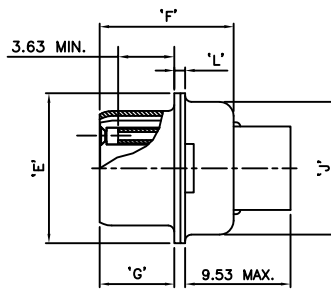
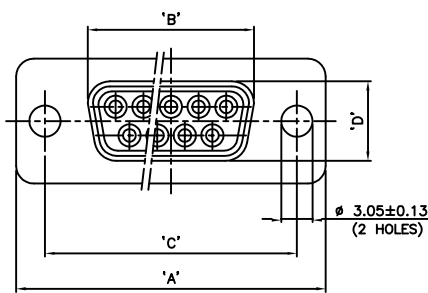
MALE

FEMALE



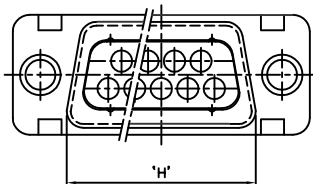
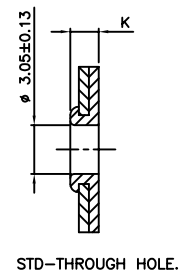
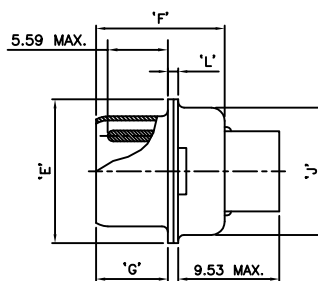
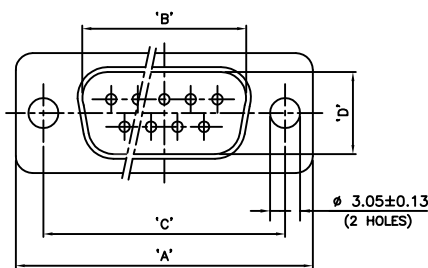
1. C - $\varnothing 0.89$ HOLE FOR CONTACT TERMINATION POSITION
2. MOUNT CONNECTOR WITH MATING FACE POSITIONED TO DIRECTION OF ARROW

R eceptacle Connector With Polarized Shell & Socket Crimp Contact



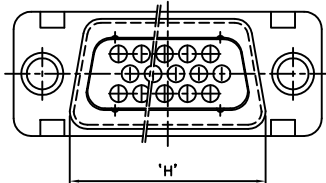
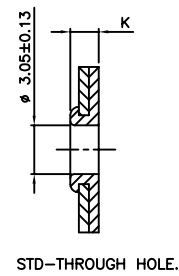
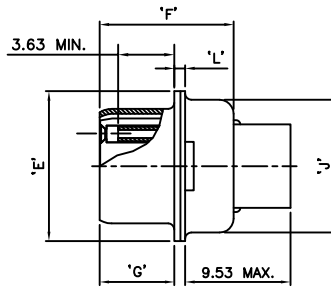
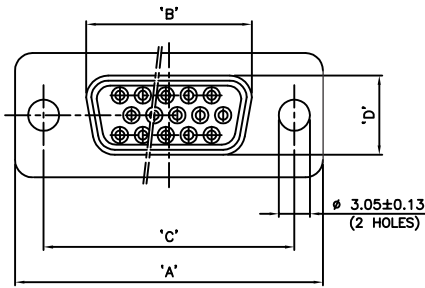
SHELL SIZE	NO. OF PIN	'A'	'B'	'C'	'D'	'E'	'F'	'G'	'H'	'J'	'K'	'L'
1	09	30.43	16.21	24.87					19.02			0.51
		31.19	16.46	25.12					19.53			1.02
2	15	38.76	24.54	33.20					27.25			0.51
		39.52	24.79	33.45					27.76			1.02
3	25	52.65	38.25	46.91	7.77	12.17	10.64	6.05	41.02	10.46	0.89	0.74
		53.42	38.51	47.17	8.03	12.93	11.15		6.30			41.53
4	37	68.94	54.71	63.37					57.45			0.74
		69.70	54.97	63.63					57.96			1.25
5	50	66.55	52.30	60.99	10.62	14.99			55.07	13.31		0.74
		67.31	52.55	61.24	10.87	15.75			55.58			13.82

Plug Connector With Polarized Shell & Pin Crimp Contact



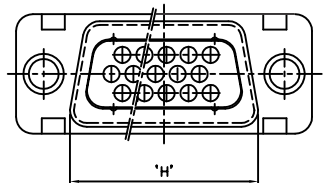
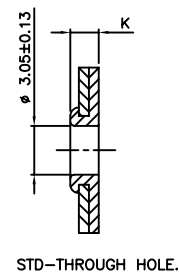
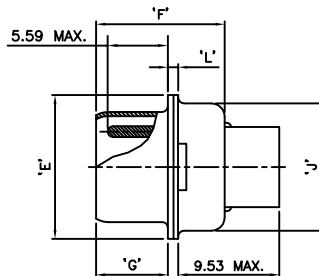
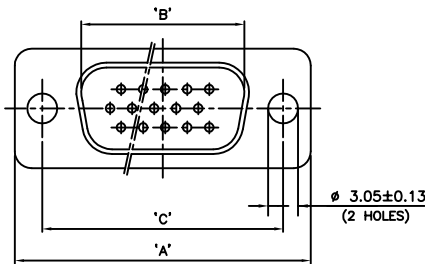
SHELL SIZE	NO. OF PIN	'A'	'B'	'C'	'D'	'E'	'F'	'G'	'H'	'J'	'K'	'L'
1	09	30.43	16.79	24.87			10.46	5.82	19.02		0.89	0.51
		31.19	17.04	25.12			10.97	6.12	19.53		1.52	1.02
2	15	38.76	25.12	33.20			10.46	5.82	27.25		0.89	0.51
		39.52	25.37	33.45			10.97	6.12	27.76		1.52	1.02
3	25	52.65	38.84	46.91	8.23	12.17	10.57		41.02	10.46	1.27	0.74
		53.42	39.09	47.17	8.48	12.93	11.07		41.53			10.97
4	37	68.94	55.30	63.37			10.57	5.99	57.45		1.27	0.74
		69.70	55.55	63.63			11.07		5.67			57.96
5	50	66.55	52.68	60.99	11.07	14.99	10.57		55.07	13.31	1.27	0.74
		67.31	52.93	61.24	11.33	15.75	11.07		55.58			13.82

R eceptacle Connector With Polarized Shell & Socket Crimp Contact-High Density



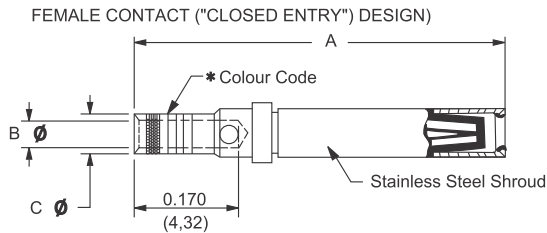
SHELL SIZE	NO. OF PIN	'A'	'B'	'C'	'D'	'E'	'F'	'G'	'H'	'J'	'K'	'L'
1	15	30.43	16.21	24.87					19.02			0.51
		31.19	16.46	25.12					19.53			1.02
2	26	38.76	24.54	33.20					27.25			0.51
		39.52	24.79	33.45					27.76			1.02
3	44	52.65	38.25	46.91	7.77	12.17	10.64	6.05	41.02	10.46	0.89	0.74
		53.42	38.51	47.17	8.03	12.93	11.15		6.30			41.53
4	62	68.94	54.71	63.37					57.45			0.74
		69.70	54.97	63.63					57.96			1.25
5	78	66.55	52.30	60.99	10.62	14.99			55.07	13.31		0.74
		67.31	52.55	61.24	10.87	15.75			55.58			13.82

Plug Connector With Polarized Shell & Pin Crimp Contact-High Density



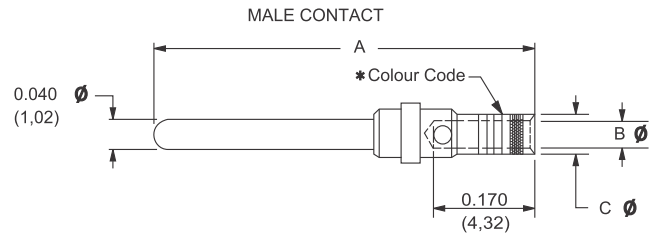
SHELL SIZE	NO. OF PIN	'A'	'B'	'C'	'D'	'E'	'F'	'G'	'H'	'J'	'K'	'L'
1	15	30.43	16.79	24.87			10.46	5.82	19.02		0.89	0.51
		31.19	17.04	25.12			10.97	6.12	19.53		1.52	1.02
2	26	38.76	25.12	33.20			10.46	5.82	27.25		0.89	0.51
		39.52	25.37	33.45			10.97	6.12	27.76		1.52	1.02
3	44	52.65	38.84	46.91	8.23	12.17	10.57		41.02	10.46	1.27	0.74
		53.42	39.09	47.17	8.48	12.93	11.07		41.53		10.97	1.78
4	62	68.94	55.30	63.37			10.57	5.99	57.45		1.27	0.74
		69.70	55.55	63.63			11.07		5.67		57.96	1.78
5	78	66.55	52.68	60.99	11.07	14.99	10.57		55.07	13.31	1.27	0.74
		67.31	52.93	61.24	11.33	15.75	11.07		55.58		13.82	1.78

CRIMP CONTACTS Closed crimp barrel



Material - Copper Alloy.
Plating - Gold flash over nickel or
0.000050 inch (1,25 μ) gold over copper for
military specification contacts.
*Colour Code - ORANGE / BLUE / GREY for military
specification contacts

PART NO.	WIRE SIZE (AWG (MM ²))	A	B \emptyset	C \emptyset
M2000-107687	20/22/24 (0,5/0,3/0,25)	0.538 (13,67)	0.044 (1,12)	0.066 (1,68)
M2000-109979	26/28/30 (0,12/0,08/0,5)	0.538 (13,67)	0.027 (0,69)	0.066 (1,68)
*M39029/63-368	20/22/24 (0,5/0,3/0,25)	0.538 (13,67)	0.044 (1,12)	0.066 (1,68)



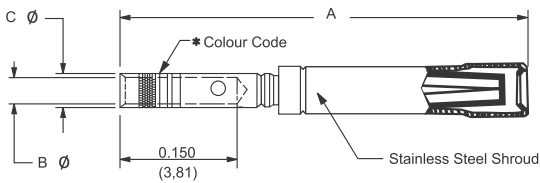
Material - Brass
Plating - Gold flash over nickel or
0.000050 inch (1,25 μ) gold over copper for
military specification contacts.
*Colour Code - ORANGE / BLUE / WHITE for military
specification contacts

PART NO.	WIRE SIZE (AWG (MM ²))	A	B \emptyset	C \emptyset
M2000-107688	20/22/24 (0,5/0,3/0,25)	0.550 (13,97)	0.044 (1,12)	0.066 (1,68)
M2000-109980	26/28/30 (0,12/0,08/0,5)	0.550 (13,97)	0.027 (0,69)	0.066 (1,68)
*M39029/64-369	20/22/24 (0,5/0,3/0,25)	0.550 (13,97)	0.044 (1,12)	0.066 (1,68)

Crimp contacts can be supplied in kit with connector or ordered separately.

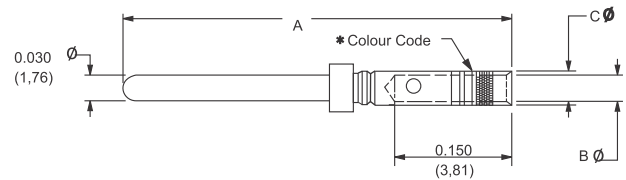
Contact Information For High Density D-Sub

CRIMP CONTACTS Closed crimp barrel



Material - Copper Alloy.
Plating - Gold flash over nickel or
0.000050 inch (1,25 μ) gold over copper for
military specification contacts.
* Colour Code - ORANGE/GREEN/YELLOW for military
specification contacts

PART NO.	WIRE SIZE (AWG (MM ²))	A	B \emptyset	C \emptyset
M2000-107294	22/24/26/28 (0,3/0,25/0,12/0,08/0,05)	0.518 (13,16)	0.035 (0,89)	0.047 (1,19)
*M39029/57-354	22/24/26/28 (0,3/0,25/0,12/0,08)	0.518 (13,16)	0.035 (0,89)	0.047 (1,19)



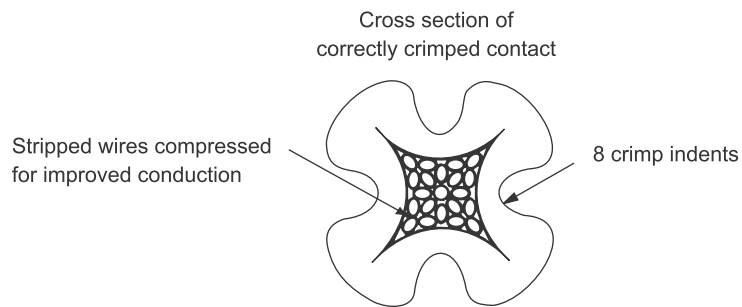
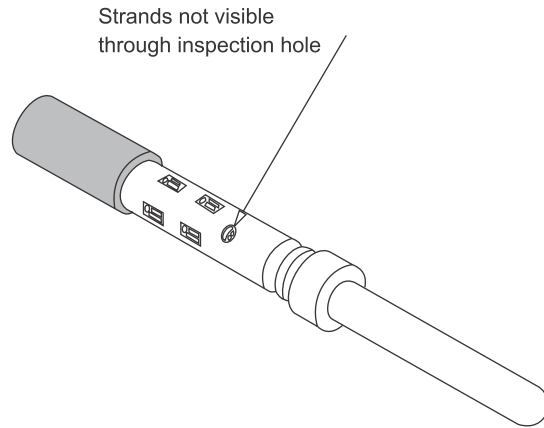
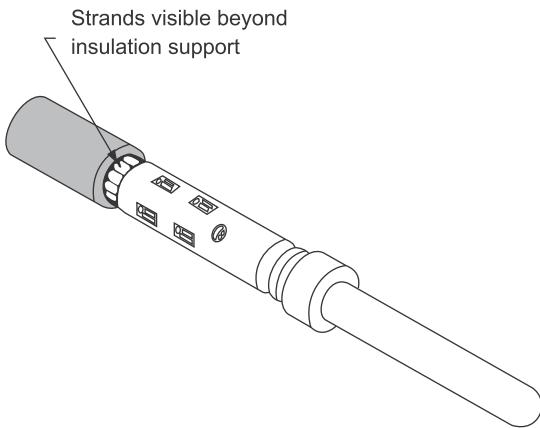
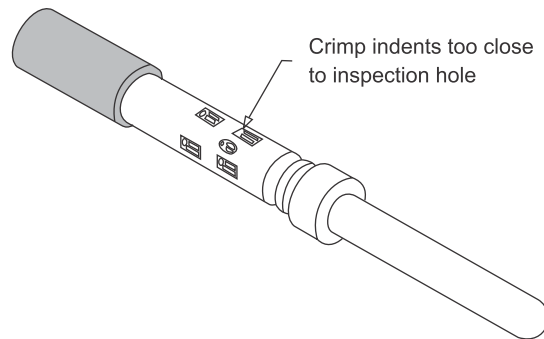
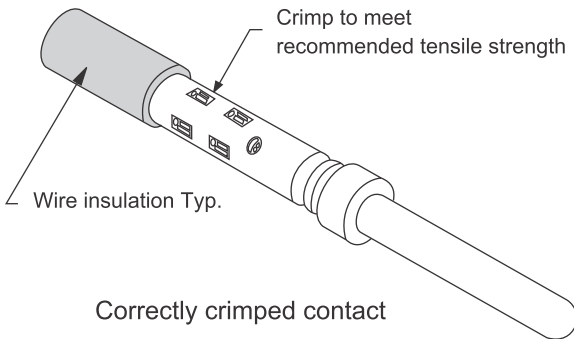
Material - Brass
Plating - Gold flash over nickel or
0.000050 inch (1,25 μ) gold over copper for
military specification contacts.
* Colour Code - ORANGE / BLUE / BLACK for military
specification contacts

PART NO.	WIRE SIZE (AWG (MM ²))	A	B \emptyset	C \emptyset
M2000-105794	22/24/26/28 (0,3/0,25/0,12/0,08/0,05)	0.531 (13,49)	0.035 (0,89)	0.047 (1,19)
*M39029/58-360	22/24/26/28 (0,3/0,25/0,12/0,08)	0.531 (13,49)	0.035 (0,89)	0.047 (1,19)

Crimp contacts can be supplied in kit with connector or ordered separately.

For all tools :

- Strands to be visible through the inspection hole
- Strands not to be visible beyond the insulation support
- Check for peeled gold and bent contact



Amphenol recommended tools for Standard / High Density Series Contact

Miniature step adjustable tool (M22520/2-01)
Part No. M2000-CRT

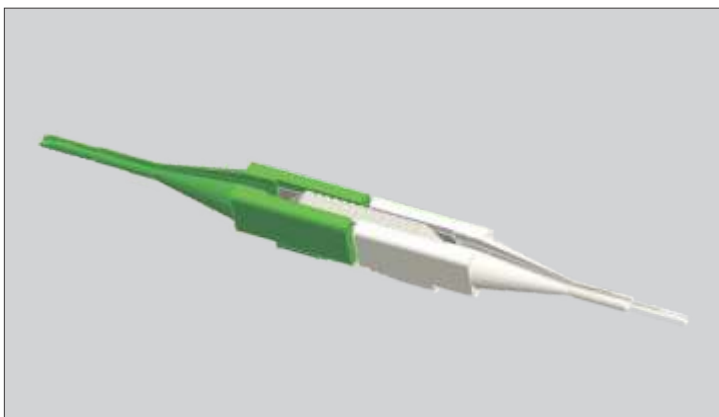


This miniature 8 step adjustable hand crimping tool produces an 8 indent crimp configuration and will crimp wire sizes 18 AWG (1.0mm²) through 32 AWG (0.3mm²)

To crimp wire size 18 AWG (1.0mm²), order contact positioner K13-1. To crimp wire size AWG (0.5mm²) through 30 AWG (0.05mm²) order contact positioner K-13-1. Each positioner is equipped with a data plate which gives the correct crimp-depth setting for each wire size and must be used with M22520/2-01 tool frame for best results when crimping M2000 (M24308) Series contacts.

Insertion/Removal Tool

M81969/39-01
(M2000-107689)



One end of this tool is used to insert contacts into M2000 (M24308) Series connectors. The other end is used to extract contacts. This is accomplished by sliding the extraction tip down the wire into the connector until it bottoms against

the contacts. A slight rotation while pushing will release the contacts, which are then extracted by simultaneously pulling on the wire.

Miniature step adjustable tool (M22520/2-01)

Part No. M2000-CRT

This miniature step adjustable hand crimping tool produces an 8 indent crimp configuration and will crimp wire sizes 20 AWG (0.5mm²) through 32 AWG (0.3mm²)



To crimp female contacts, order contact positioner K41. To crimp male contacts, order contact positioner K42. Each positioner is equipped with a data plate which gives the correct crimp-depth setting for each wire size and must be used with M22520/2-01 tool frame for best results when crimping M2000 (M24308) Series contacts.

Insertion/Removal Tool (M81969/14-01) (M2000-105786)

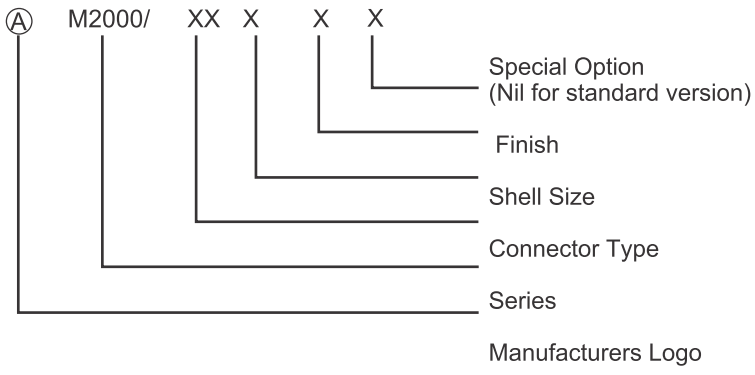


One end of this tool is used to insert contacts into M2000 (M24308) Series connectors. The other end is used to extract contacts. This is accomplished by sliding the extraction tip down the wire into the

connector until it bottoms against the contacts. A slight rotation while pushing will release the contacts, which are then extracted by simultaneously pulling on the wire.

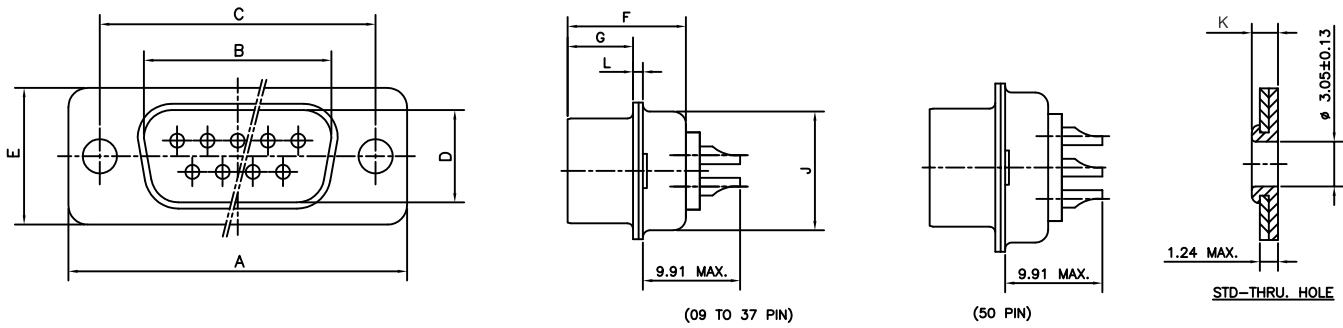
Special Products

Ordering information For Solder Type Standard D-Sub Connector (Non Environmental)



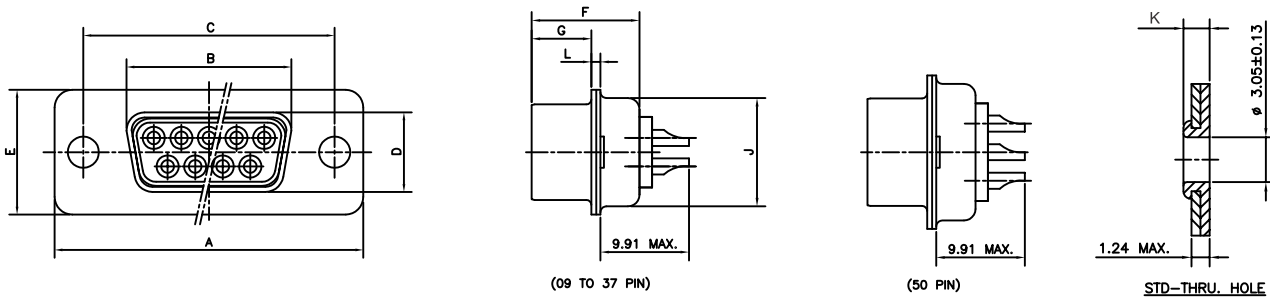
Series: M2000
Connector Type : 1 - Receptacle Connector with Solder Type Contact (Fixed Contacts)
 3 - Plug Connector with Solder Type Contact (Fixed Contacts)
Shell Size : 1-9 pin 2-15 pin 3-25 pin 4-37 pin 5-50 pin
Finish : F- Cadmium plate with yellow passivation, Z - Zinc Plated, N - Nickel Plated, T - Tin Plated
Special Option : L- Launch vehicle application

Plug Connector With Solder Contact



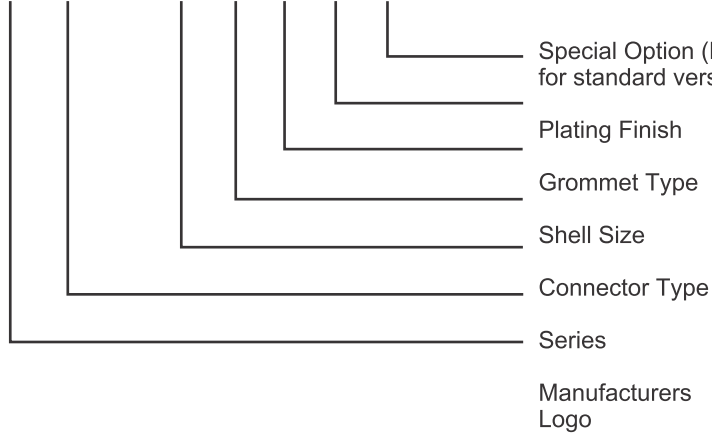
SR. NO.	CONNECTOR NO.	SHELL SIZE	'A'	'B'	'C'	'D'	'E'	'F'	'G'	'H'	'J'	'K'	'L'
1	M2000/3-1F	09	30.43	16.79	24.87			10.46		19.02		0.89	0.51
			31.19	17.04	25.12			10.97		19.53			1.02
2	M2000/3-2F	15	38.76	25.12	33.20	8.23	12.17	10.46	5.82	41.02	10.46	1.27	0.74
			39.52	25.37	33.45			10.97		27.25			1.02
3	M2000/3-3F	25	52.65	38.84	46.91	8.48	12.93	10.57	6.05	41.53	10.97	1.78	0.74
			53.42	39.09	47.17			11.07		41.53			1.25
4	M2000/3-4F	37	68.94	55.30	63.37			10.57		57.45			0.74
			69.70	55.55	63.63			11.07		57.96			1.25
5	M2000/3-5F	50	66.55	52.68	60.99	11.07	14.99	10.57		55.07	13.31	13.82	0.74
			67.31	52.93	61.24			11.33		15.75			11.07

Receptacle Connector With Solder Contact



SR. NO.	CONNECTOR NO.	SHELL SIZE	'A'	'B'	'C'	'D'	'E'	'F'	'G'	'H'	'J'	'K'	'L'
1	M2000/1-1F	09	30.43	16.21	24.87					19.02			0.51
			31.19	16.46	25.12					19.53			1.02
2	M2000/1-2F	15	38.76	24.54	33.20					41.02	10.46	0.89	0.74
			39.52	24.79	33.45					27.25			1.02
3	M2000/1-3F	25	52.65	38.25	46.91	7.77	12.17	10.64	6.05	41.53	10.97	1.52	0.74
			53.42	38.51	47.17					8.03			12.93
4	M2000/1-4F	37	68.94	54.71	63.37					57.45			0.74
			69.70	54.97	63.63					11.07			57.96
5	M2000/1-5F	50	66.55	52.30	60.99	10.62	14.99			55.07	13.31	13.82	0.74
			67.31	52.55	61.24					10.87			15.75

① M2000/ X X X X X



Series: M2000

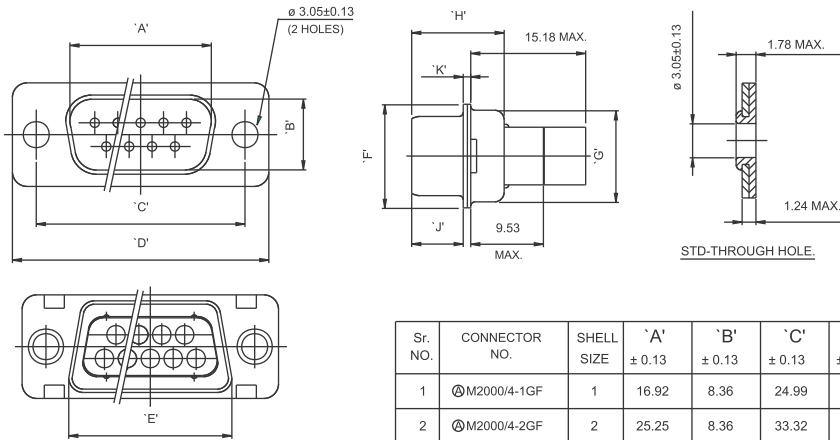
Connector Type : 4 - Plug Connector with Pin Contact Crimp Type, Rear Release, Rear Removable
2 - Socket Connector with Socket Contact Crimp Type, Rear Release, Rear Removable

Grommet Type : G- Silicon Elastomer Grommet

Shell Size : 1-9 pin Finish : F-Cadmium plate with yellow passivation
2-15 pin Z - Zinc Plated,
3-25 pin N - Nickel Plated,
4-37 pin T - Tin Plated
5-50 pin

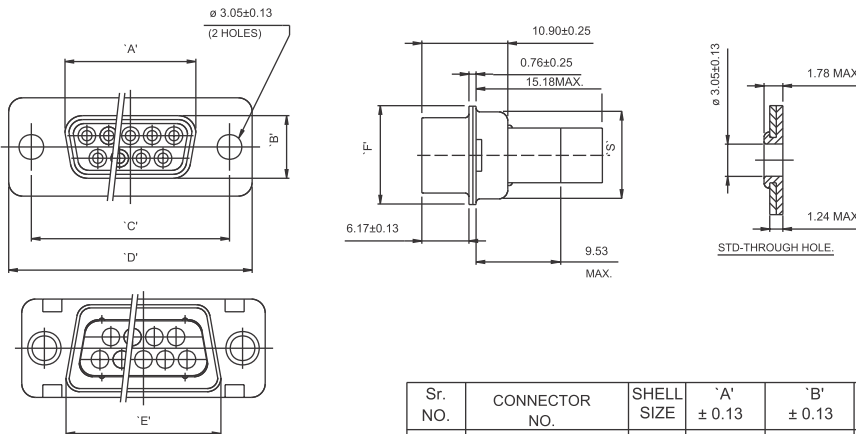
Special Option : L- Launch vehicle application

Plug Connector With Pin Contact (With Grommet) - Rear Removable



Sr. NO.	CONNECTOR NO.	SHELL SIZE	'A' ± 0.13	'B' ± 0.13	'C' ± 0.13	'D' ± 0.38	'E' ± 0.25	'F' ± 0.38	'G' ± 0.25	'H' ± 0.25	'J' ± 0.15	'K' ± 0.25
1	⊕M2000/4-1GF	1	16.92	8.36	24.99	30.81	19.28	12.55	10.72	10.72	5.97	0.76
2	⊕M2000/4-2GF	2	25.25	8.36	33.32	39.14	27.51	12.55	10.72	10.72	5.97	0.76
3	⊕M2000/4-3GF	3	38.96	8.36	47.04	53.04	41.30	12.55	10.72	10.72	5.97	0.76
4	⊕M2000/4-4GF	4	55.42	8.36	63.50	69.32	57.71	12.55	10.72	10.82	5.84	0.99
5	⊕M2000/4-5GF	5	52.81	11.20	61.11	66.93	55.32	15.37	13.56	10.82	5.84	0.99

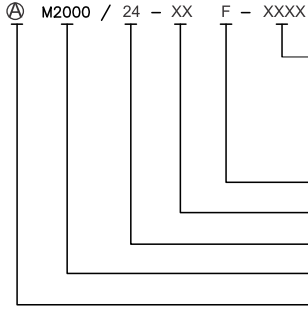
Receptacle Connector With Socket Contact (With Grommet) - Rear Removable



Sr. NO.	CONNECTOR NO.	SHELL SIZE	'A' ± 0.13	'B' ± 0.13	'C' ± 0.13	'D' ± 0.38	'E' ± 0.25	'F' ± 0.38	'G' ± 0.25
1	⊕M2000/2-1GF	1	16.33	7.90	24.99	30.81	19.28	12.55	10.72
2	⊕M2000/2-2GF	2	24.66	7.90	33.32	39.14	27.51	12.55	10.72
3	⊕M2000/2-3GF	3	38.38	7.90	47.04	53.04	41.30	12.55	10.72
4	⊕M2000/2-4GF	4	54.84	7.90	63.50	69.32	57.71	12.55	10.72
5	⊕M2000/2-5GF	5	52.43	10.74	61.11	66.93	55.32	15.37	13.56

Ordering Information For Straight PC Tail Type Connector (Plug Connector)

ORDERING INFORMATION STRAIGHT PC TAIL TYPE CONNECTORS



- CN - WITH CLINCH NUT (4-40UNC)
- IF - WITH INTERFACIAL SEAL
- IFCN - WITH INTERFACIAL SEAL & CLINCH NUT
- FS - FEMALE SCREWLOCK (JACKPOST)
- MS - MALE SCREWLOCK
- L - LAUNCH VEHICLE OPTION FINISH
- SHELL SIZE (1, 2, 3, 4)
- CONNECTOR TYPE
- SERIES
- MANUFACTURER LOGO

CONNECTOR TYPE:

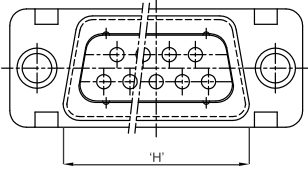
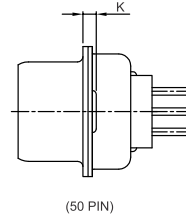
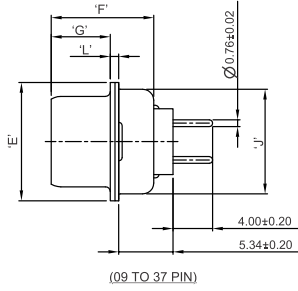
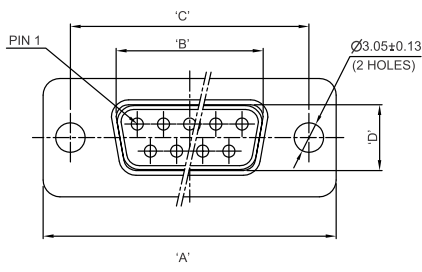
- 23 - RECEPTACLE CONNECTOR (PC TAIL TYPE)
- 24 - PLUG CONNECTOR (PC TAIL TYPE)

FINISH

- F - CADMIUM YELLOW PASSIVATED
- Z - ZINC YELLOW PASSIVATED
- K - ZINC NICKEL FINISH
- T - NICKEL PTFE FINISH
- TI - TIN PLATED

NOTE :

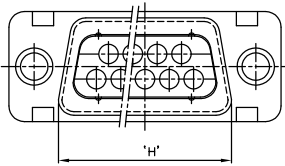
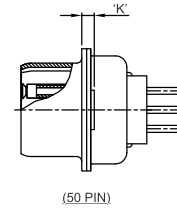
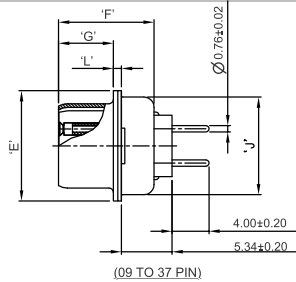
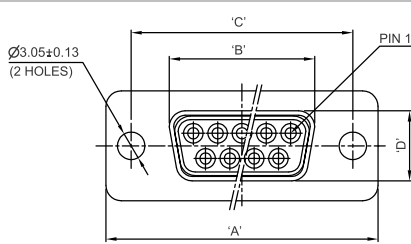
1. BRASS BUSH (SPACER) WILL BE SUPPLIED LOOSE WITH THIS CONNECTOR (NOT APPLICABLE FOR CONNECTOR WITH CLINCH NUT)



DIMENSION TABLE (PLUG CONNECTOR)

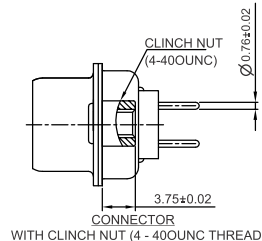
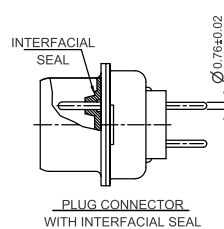
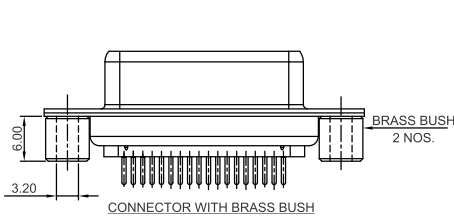
SR. NO.	CONNECTOR PART NO.	Shell Size	Std. Density No. of Pins	'A'	'B'	'C'	'D'	'E'	'F'	'G'	'H'	'J'	'K'	'L'
2	M2000/24-2F	2	15	38.76 39.52	25.12 25.37	33.20 33.45			10.46 10.97		27.25 27.76		0.89 1.52	0.51 1.02
3	M2000/24-3F	3	25	52.65 53.42	38.84 39.09	46.91 47.17	8.23 8.48	12.17 12.93	10.57 11.07	5.82 6.05	41.02 41.53	10.46 10.97		0.74 1.25
4	M2000/24-4F	4	37	68.94 69.70	55.30 55.55	63.37 63.63			10.57 11.07		57.45 57.96		1.27 1.78	0.74 1.25
5	M2000/24-5F	5	50	66.55 67.31	52.65 52.93	60.99 61.24	11.07 11.33	14.99 15.75	10.57 11.07		55.07 55.58	13.31 13.82		0.74 1.25

For Straight PC Tail Type Connector (Receptacle)



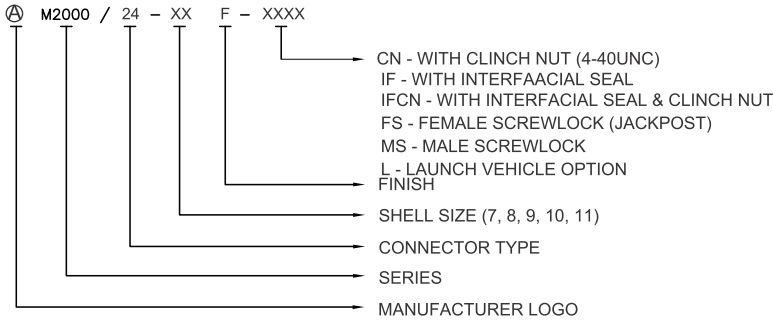
DIMENSION TABLE (RECEPTACLE CONNECTOR)

SR. NO.	CONNECTOR PART NO.	Shell Size	Std. Density No. of Pins	'A'	'B'	'C'	'D'	'E'	'F'	'G'	'H'	'J'	'K'	'L'
2	M2000/23-2F	2	15	38.76 39.52	24.54 24.79	33.20 33.45					27.25 27.76			0.51 1.02
3	M2000/23-3F	3	26	52.65 53.42	38.25 38.51	46.91 47.17	7.77 8.03	12.17 12.93	10.646 11.15	6.05 6.30	41.02 41.53	10.46 10.97	0.89 1.52	0.74 1.25
4	M2000/23-4F	4	37	68.94 69.70	34.71 34.97	63.37 63.63					57.45 57.96			0.74 1.25
5	M2000/23-5F	5	50	66.55 67.31	52.30 52.55	60.99 61.24	10.62 10.87	14.99 15.75			55.07 55.58	13.31 13.82		0.74 1.25



Ordering Information For Straight PC Tail Type Connector (Plug Connector)

ORDERING INFORMATION STRAIGHT PC TAIL TYPE CONNECTORS



- CN - WITH CLINCH NUT (4-40UNC)
- IF - WITH INTERFACIAL SEAL
- IFCN - WITH INTERFACIAL SEAL & CLINCH NUT
- FS - FEMALE SCREWLOCK (JACKPOST)
- MS - MALE SCREWLOCK
- L - LAUNCH VEHICLE OPTION

CONNECTOR TYPE:

- 23 - RECEPTACLE CONNECTOR (PC TAIL TYPE)
- 24 - PLUG CONNECTOR (PC TAIL TYPE)

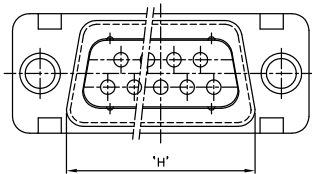
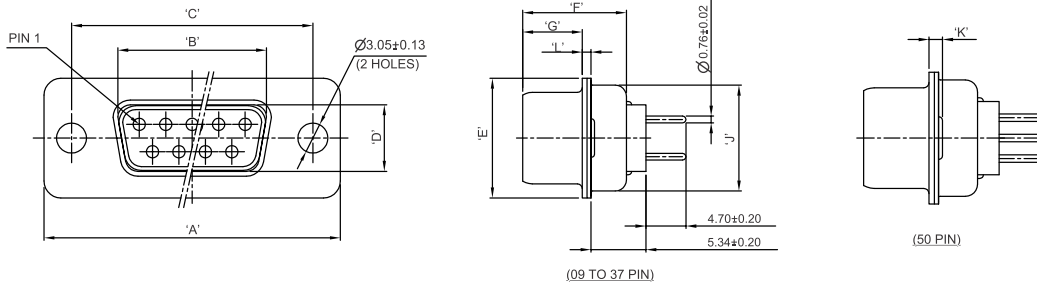
FINISH

- F - CADMIUM YELLOW PASSIVATED
- Z - ZINC YELLOW PASSIVATED
- K - ZINC NICKEL FINISH
- T - NICKEL PTFE FINISH

TI - TIN PLATED

NOTE :

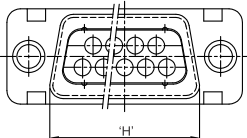
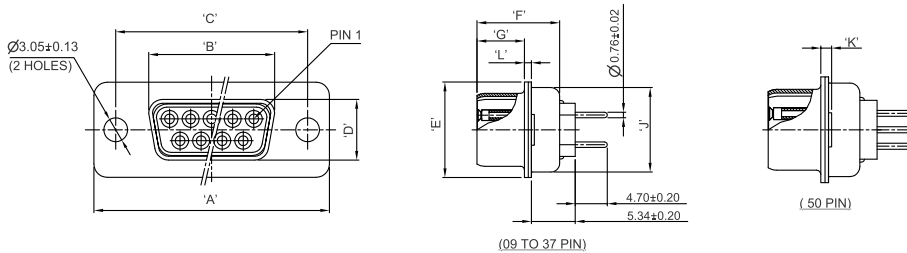
1. BRASS BUSH (SPACER) WILL BE SUPPLIED LOOSE WITH THIS CONNECTOR (NOT APPLICABLE FOR CONNECTOR WITH CLINCH NUT)



DIMENSION TABLE (PLUG CONNECTOR)

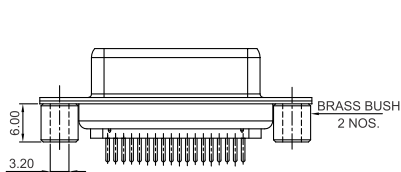
SR. NO	CONNECTOR PART NO.	Shell Size	Std. Density No. of Pins	'A'	'B'	'C'	'D'	'E'	'F'	'G'	'H'	'J'	'K'	'L'
1	M2000/24-7F	1	09	30.43	16.79	24.87			10.46		19.02			0.51
				31.19	17.04	25.12								
2	M2000/24-8F	2	15	38.76	25.12	33.20			10.46		27.25		0.89	0.51
				39.52	25.37	33.45								
3	M2000/24-9F	3	25	52.65	38.84	46.91	8.23	12.17	10.57	5.82	41.02	10.46		0.74
				53.42	39.09	47.17								
4	M2000/24-10F	4	37	68.94	55.30	63.37			10.57		57.45		1.27	0.74
				69.70	55.55	63.63								
5	M2000/24-11F	5	50	66.55	52.65	60.99	11.07	14.99	10.57		55.07	13.31		0.74
				67.31	52.93	61.24								

For Straight PC Tail Type Connector (Receptacle)

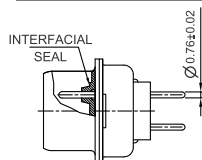


DIMENSION TABLE (RECEPTACLE CONNECTOR)

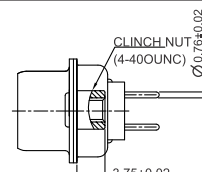
SR. NO	CONNECTOR PART NO.	Shell Size	Std. Density No. of Pins	'A'	'B'	'C'	'D'	'E'	'F'	'G'	'H'	'J'	'K'	'L'
1	M2000/23-7F	1	09	30.43	16.21	24.87					19.02			0.51
				31.19	16.46	25.12								
2	M2000/23-8F	2	15	38.76	24.54	33.20			10.46		27.25		0.51	1.02
				39.52	24.79	33.45								
3	M2000/23-9F	3	26	52.65	38.25	46.91	7.77	12.17	10.64	6.05	41.02	10.46	0.89	0.74
				53.42	38.51	47.17								
4	M2000/23-10F	4	37	68.94	34.71	63.37			10.57		57.45		0.74	1.25
				69.70	34.97	63.63								
5	M2000/23-11F	5	50	66.55	52.30	60.99	10.62	14.99	10.57		55.07	13.31		0.74
				67.31	52.55	61.24								



CONNECTOR WITH BRASS BUSH



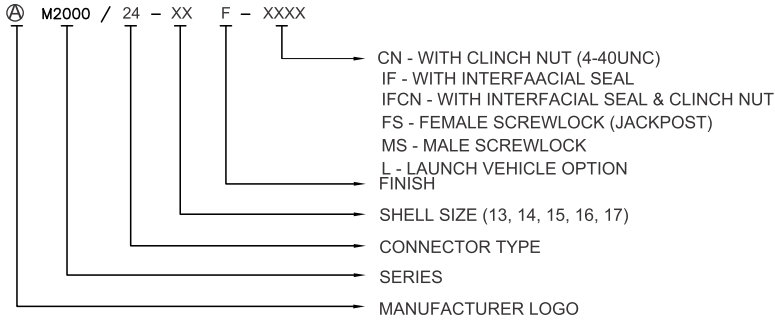
PLUG CONNECTOR WITH INTERFACIAL SEAL



CONNECTOR WITH CLINCH NUT (4 - 40UNC THREAD)

Ordering Information For Straight PC Tail Type Connector (Plug)

ORDERING INFORMATION STRAIGHT PC TAIL TYPE CONNECTORS



CONNECTOR TYPE:

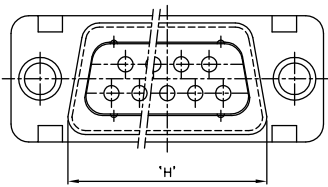
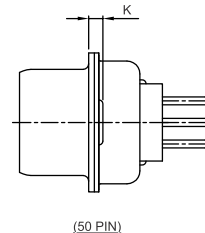
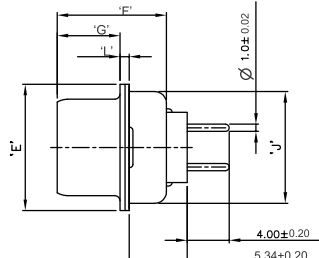
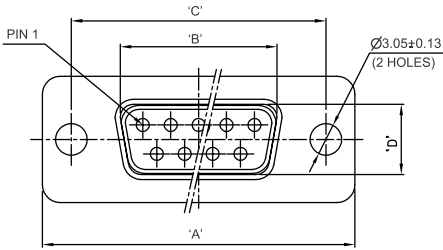
- 23 - RECEPTACLE CONNECTOR (PC TAIL TYPE)
- 24 - PLUG CONNECTOR (PC TAIL TYPE)

FINISH

- F - CADMIUM YELLOW PASSIVATED
- Z - ZINC YELLOW PASSIVATED
- K - ZINC NICKEL FINISH
- T - NICKEL PTFE FINISH
- TI - TIN PLATED

NOTE :

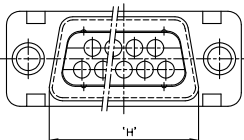
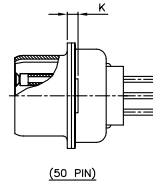
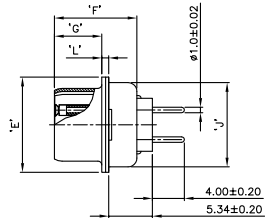
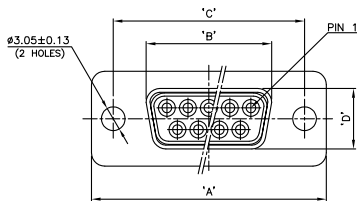
- BRASS BUSH (SPACER) WILL BE SUPPLIED LOOSE WITH THIS CONNECTOR (NOT APPLICABLE FOR CONNECTOR WITH CLINCH NUT)



DIMENSION TABLE (PLUG CONNECTOR)

SR. NO.	CONNECTOR PART NO.	Shell Size	Std. Density No. of Pins	'A'	'B'	'C'	'D'	'E'	'F'	'G'	'H'	'J'	'K'	'L'
1	M2000/24-13F	1	09	30.43	16.79	24.87			10.46		19.02			0.51
				31.19	17.04	25.12		10.97		19.53			1.02	
2	M2000/24-14F	2	15	38.76	25.12	33.20			10.46		27.25		0.89	0.51
				39.52	25.37	33.45		10.97		27.76		1.52	1.02	
3	M2000/24-15F	3	25	52.65	38.84	46.91	8.23	12.17	10.57	5.82	41.02	10.46		0.74
				53.42	39.09	47.17	8.48	12.93	11.07	6.05	41.53	10.97		1.25
4	M2000/24-16F	4	37	68.94	55.30	63.37			10.57		57.45		1.27	0.74
				69.70	55.55	63.63		11.07		57.96		1.78	1.25	
5	M2000/24-17F	5	50	66.55	52.65	60.99	11.07	14.99	10.57		55.07	13.31		0.74
				67.31	52.93	61.24	11.33	15.75	11.07	55.58	13.82		1.25	

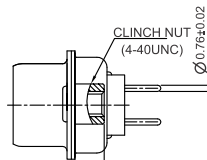
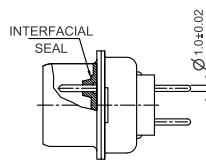
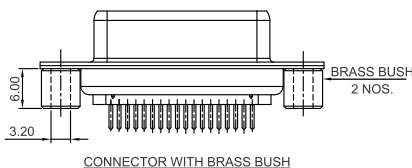
For Straight PC Tail Type Connector (Receptacle)



(09 TO 37 PIN)

DIMENSION TABLE (RECEPTACLE CONNECTOR)

SR. NO.	CONNECTOR PART NO.	Shell Size	Std. Density No. of Pins	'A'	'B'	'C'	'D'	'E'	'F'	'G'	'H'	'J'	'K'	'L'
1	M2000/23-13F	1	09	30.43	16.21	24.87					19.02			0.51
				31.19	16.46	25.12				19.53			1.02	
2	M2000/23-14F	2	15	38.76	24.54	33.20					27.25			0.51
				39.52	24.79	33.45				27.76			1.02	
3	M2000/23-15F	3	26	52.65	38.25	46.91	7.77	12.17	10.64	6.05	41.02	10.46	0.89	0.74
				53.42	38.51	47.17	8.03	12.93	11.15	6.30	41.53	10.97	1.52	1.25
4	M2000/23-16F	4	37	68.94	34.71	63.37					57.45			0.74
				69.70	54.97	63.63				57.96			1.25	
5	M2000/23-17F	5	50	66.55	52.30	60.99	10.62	14.99			55.07	13.31		0.74
				67.31	52.55	61.24	10.87	15.75		55.58	13.82		1.25	



PLUG CONNECTOR WITH INTERFACIAL SEAL

CONNECTOR WITH CLINCH NUT (4 - 40UNC THREAD)

Ordering Information For Straight PC Tail Type Connector (Plug)

ORDERING INFORMATION STRAIGHT PC TAIL TYPE CONNECTORS

① M2000 / 24 - XX F - XXXX

- CN - WITH CLINCH NUT (4-40UNC)
- IF - WITH INTERFACIAL SEAL
- IFCN - WITH INTERFACIAL SEAL & CLINCH NUT
- FS - FEMALE SCREWLOCK (JACKPOST)
- MS - MALE SCREWLOCK
- L - LAUNCH VEHICLE OPTION FINISH
- SHELL SIZE (19, 20, 21, 22, 23)
- CONNECTOR TYPE
- SERIES
- MANUFACTURER LOGO

CONNECTOR TYPE:

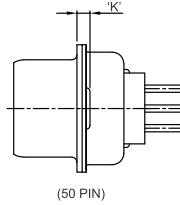
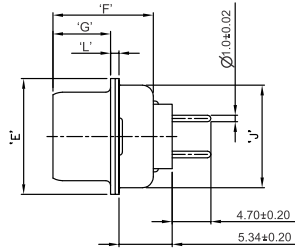
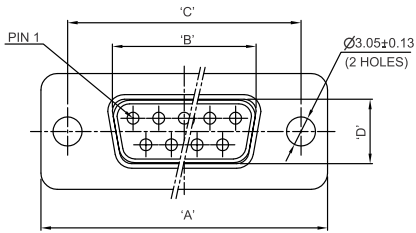
- 23 - RECEPTACLE CONNECTOR (PC TAIL TYPE)
- 24 - PLUG CONNECTOR (PC TAIL TYPE)

FINISH

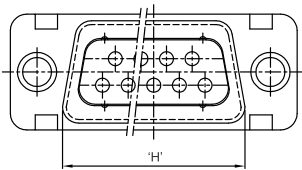
- F - CADMIUM YELLOW PASSIVATED
- Z - ZINC YELLOW PASSIVATED
- K - ZINC NICKEL FINISH
- T - NICKEL PTFE FINISH
- TI - TIN PLATED

NOTE :

- 1. BRASS BUSH (SPACER) WILL BE SUPPLIED LOOSE WITH THIS CONNECTOR (NOT APPLICABLE FOR CONNECTOR WITH CLINCH NUT)



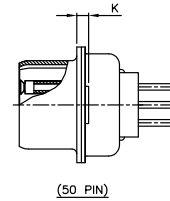
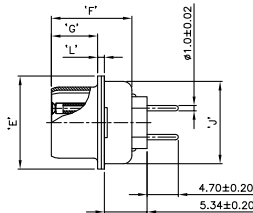
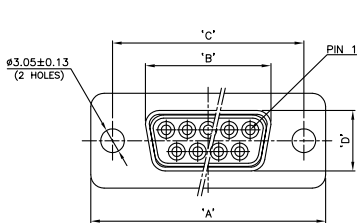
(09 TO 37 PIN)



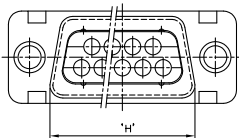
DIMENSION TABLE (PLUG CONNECTOR)

SR. NO	CONNECTOR PART NO.	Shell Size	Std. Density No. of Pins	'A'	'B'	'C'	'D'	'E'	'F'	'G'	'H'	'J'	'K'	'L'
1	M2000/24-19F	1	09	30.43	16.79	24.87			10.46		19.02			0.51
				31.19	17.04	25.12			10.97		19.53			1.02
2	M2000/24-20F	2	15	38.76	25.12	33.20			10.46		27.25		0.89	0.51
				39.52	25.37	33.45			10.97		27.76		1.52	1.02
3	M2000/24-21F	3	25	52.65	38.84	46.91	8.23	12.17	10.57	5.82	41.02	10.46		0.74
				53.42	39.09	47.17	8.48	12.93	11.07	6.05	41.53	10.97		1.25
4	M2000/24-22F	4	37	68.94	55.30	63.37			10.57		57.45		1.27	0.74
				69.70	55.55	63.63			11.07		57.96		1.78	1.25
5	M2000/24-23F	5	50	66.55	52.65	60.99	11.07	14.99	10.57		55.07	13.31		0.74
				67.31	52.93	61.24	11.33	15.75	11.07	55.58	13.82		1.25	

For Straight PC Tail Type Connector (Receptacle)

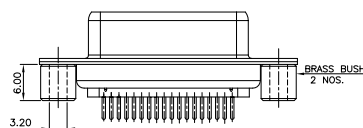


(09 TO 37 PIN)

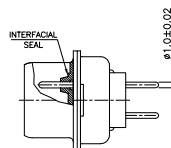


DIMENSION TABLE (RECEPTACLE CONNECTOR) :-

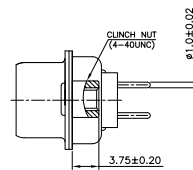
SR NO.	CONNECTOR PART NO.	SHELL SIZE	Std. Density No. of Pins	'A'	'B'	'C'	'D'	'E'	'F'	'G'	'H'	'J'	'K'	'L'
1	M2000/23-19F	1	09	30.43	16.21	24.87					19.02			0.51
				31.19	16.46	25.12					19.53			1.02
2	M2000/23-20F	2	15	38.76	24.54	33.20					27.25			0.51
				39.52	24.79	33.45					27.76			1.02
3	M2000/23-21F	3	26	52.65	38.25	46.91	7.77	12.17	10.64	6.05	41.02	10.46	0.89	0.74
				53.42	38.51	47.17	8.03	12.93	11.15	6.30	41.53	10.97	1.52	1.25
4	M2000/23-22F	4	37	68.94	54.71	63.37					57.45			0.74
				69.70	54.97	63.63					57.96			1.25
5	M2000/23-23F	5	50	66.55	52.30	60.99	10.62	14.99			55.07	13.31		0.74
				67.31	52.55	61.24	10.87	15.75			55.58	13.82		1.25



CONNECTOR WITH BRASS BUSH



PLUG CONNECTOR WITH INTERFACIAL SEAL



CONNECTOR WITH CLINCH NUT (4-40UNC THREAD)

Ordering Information For High Density Straight PC Tail Type Connector (Plug)

ORDERING INFORMATION PC TAIL TYPE (L=4.00MM) CONNECTORS

Ⓐ M2000 / 24 - XX F - XXXX

CN - WITH CLINCH NUT (4-40UNC)
 IF - WITH INTERFACIAL SEAL
 IFCN - WITH INTERFACIAL SEAL & CLINCH NUT
 FS - FEMALE SCREWLOCK (JACKPOST)
 L - LAUNCH VEHICLE OPTION
 FINISH
 SHELL SIZE (61, 62, 63, 64, 65)
 CONNECTOR TYPE
 SERIES
 MANUFACTURER LOGO

CONNECTOR TYPE:

23 - RECEPTACLE CONNECTOR (PC TAIL TYPE)
 24 - PLUG CONNECTOR (PC TAIL TYPE)

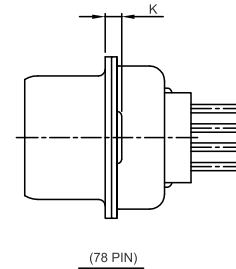
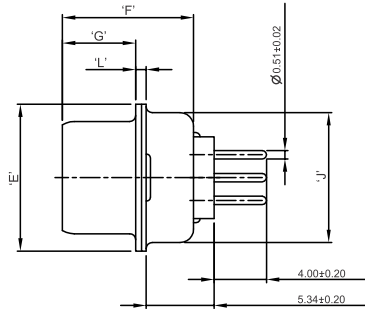
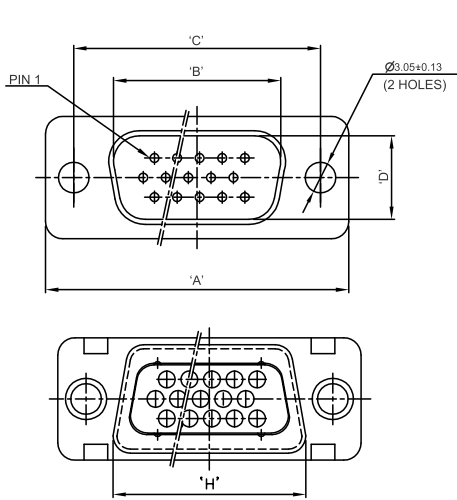
FINISH

F - CADMIUM YELLOW PASSIVATED
 Z - ZINC YELLOW PASSIVATED
 K - ZINC NICKEL FINISH
 T - NICKEL PTFE FINISH
 TI - TIN PLATED

NOTE :

1. BRASS BUSH (SPACER) WILL BE SUPPLIED LOOSE WITH THIS CONNECTOR
 (NOT APPLICABLE FOR CONNECTOR WITH CLINCH NUT)

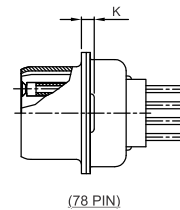
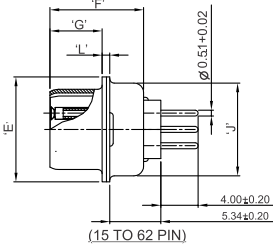
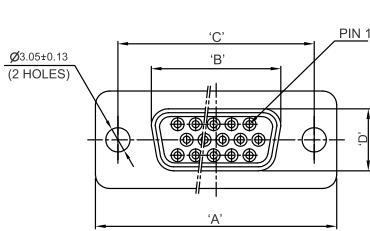
For Straight PC Tail Type Connector (Plug)



(15 TO 62 PIN)
DIMENSION TABLE (PLUG CONNECTOR)

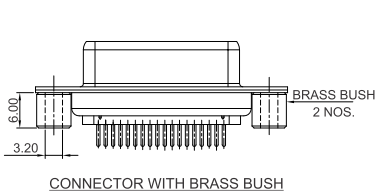
SR. NO.	CONNECTOR PART NO.	Shell Size	High Density No. of Pins	'A'	'B'	'C'	'D'	'E'	'F'	'G'	'H'	'J'	'K'	'L'
				30.43 31.19	16.79 17.04	24.87 25.12								
1	M2000/24-61F	1	15	30.43	16.79	24.87			10.46		19.02			24.87
				31.19	17.04	25.12								
2	M2000/24-62F	2	26	38.76	25.12	33.20	8.23	12.17	10.46	10.97	41.53	10.97		33.20
				39.52	25.37	33.45								
3	M2000/24-63F	3	44	52.65	38.84	46.91	8.48	12.93	10.57	11.07	41.02	10.46		46.91
				53.42	39.09	47.17								
4	M2000/24-64F	4	62	68.94	55.30	63.37			10.57	11.07	57.45			63.37
				69.70	55.55	63.63								
5	M2000/24-65F	5	78	66.55	52.68	60.99	11.07	14.99	10.57	11.07	55.07	13.31		60.99
				67.31	52.93	61.24								

For Straight PC Tail Type Connector (Receptacle)

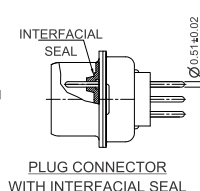


(15 TO 62 PIN)
DIMENSION TABLE (RECEPTACLE CONNECTOR)

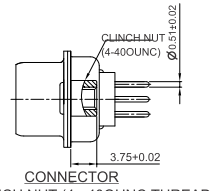
SR. NO.	CONNECTOR PART NO.	Shell Size	High Density No. of Pins	'A'	'B'	'C'	'D'	'E'	'F'	'G'	'H'	'J'	'K'	'L'
				30.43 31.19	16.21 16.46	24.87 25.12								
1	M2000/23-61F	1	15	30.43	16.21	24.87					19.02			0.51
				31.19	16.46	25.12								
2	M2000/23-62F	2	26	38.76	24.54	33.20					27.25			0.51
				39.52	24.79	33.45								
3	M2000/23-63F	3	44	52.65	38.25	46.91	7.77	12.17	10.46	8.05	41.02	10.46	0.89	0.74
				53.42	38.51	47.17								
4	M2000/23-64F	4	62	68.94	34.71	63.37					57.45			0.74
				69.70	54.97	63.63								
5	M2000/23-65F	5	78	66.55	52.30	60.99	10.62	14.99			55.07	13.31		0.74
				67.31	52.55	61.24								



CONNECTOR WITH BRASS BUSH



PLUG CONNECTOR WITH INTERFACIAL SEAL



CONNECTOR WITH CLINCH NUT (4 - 40UNC THREAD)

Ordering Information For High Density Straight PC Tail Type Connector

ORDERING INFORMATION STRAIGHT PC TAIL TYPE CONNECTORS

① M2000 / 24 - XX F - XXXX

- CN - WITH CLINCH NUT (4-40UNC)
- IF - WITH INTERFACIAL SEAL
- IFCN - WITH INTERFACIAL SEAL & CLINCH NUT
- FS - FEMALE SCREWLOCK (JACKPOST)
- MS - MALE SCREWLOCK
- L - LAUNCH VEHICLE OPTION FINISH
- SHELL SIZE (67, 68, 69, 70, 71)
- CONNECTOR TYPE
- SERIES
- MANUFACTURER LOGO

CONNECTOR TYPE:

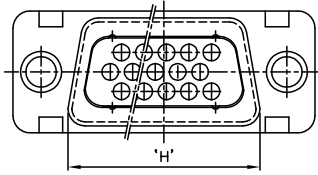
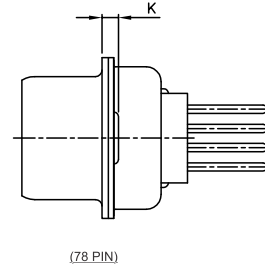
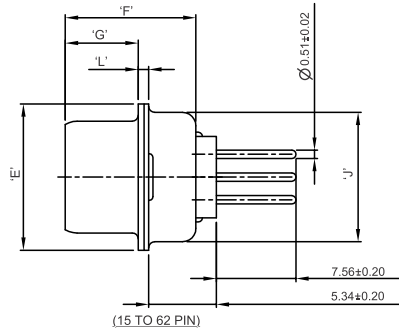
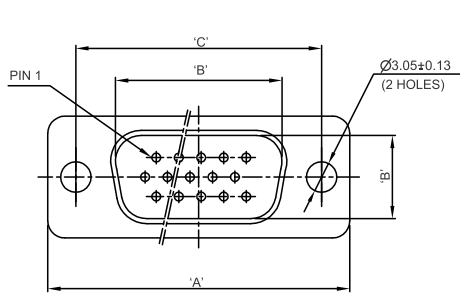
- 23 - RECEPTACLE CONNECTOR (PC TAIL TYPE)
- 24 - PLUG CONNECTOR (PC TAIL TYPE)

FINISH

- F - CADMIUM YELLOW PASSIVATED
- Z - ZINC YELLOW PASSIVATED
- K - ZINC NICKEL FINISH
- T - NICKEL PTFE FINISH
- TI - TIN PLATED

NOTE :

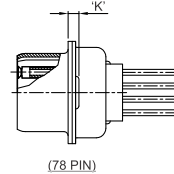
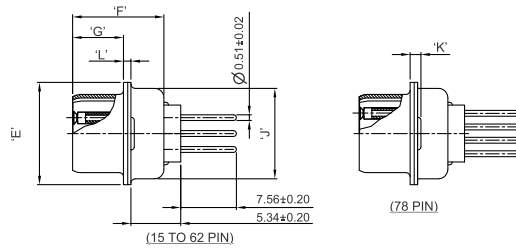
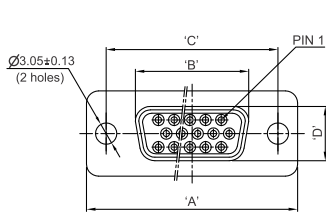
- 1. BRASS BUSH (SPACER) WILL BE SUPPLIED LOOSE WITH THIS CONNECTOR (NOT APPLICABLE FOR CONNECTOR WITH CLINCH NUT)



DIMENSION TABLE (PLUG CONNECTOR)

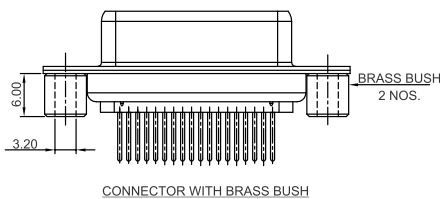
SR. NO	CONNECTOR PART NO.	Shell Size	High Density No. of Pins	'A'	'B'	'C'	'D'	'E'	'F'	'G'	'H'	'J'	'K'	'L'
1	M2000/24-67F	1	15	30.43	16.79	24.87								
				31.19	17.04	25.12								
2	M2000/24-68F	2	26	38.76	25.12	33.20								
				39.52	25.37	33.45								
3	M2000/24-69F	3	44	52.65	38.84	46.91	8.23	12.17						
				53.42	39.09	47.17								
4	M2000/24-70F	4	62	68.94	55.30	63.37								
				69.70	55.55	63.63								
5	M2000/24-71F	5	78	66.55	52.65	60.99	11.07	14.99						
				67.31	52.93	61.24								

For Straight PC Tail Type Connector (Receptacle)

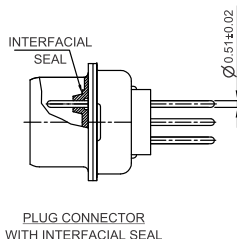


DIMENSION TABLE (RECEPTACLE CONNECTOR)

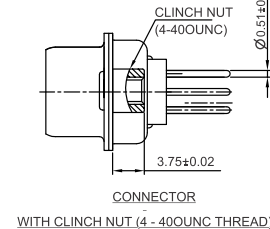
SR. NO	CONNECTOR PART NO.	Shell Size	High Density No. of Pins	'A'	'B'	'C'	'D'	'E'	'F'	'G'	'H'	'J'	'K'	'L'
1	M2000/23-67F	1	15	30.43	16.21	24.87								
				31.19	16.46	25.12								
2	M2000/23-68F	2	26	38.76	24.54	33.20								
				39.52	24.79	33.45								
3	M2000/23-69F	3	44	52.65	38.25	46.91	7.77	12.17						
				53.42	38.51	47.17								
4	M2000/23-70F	4	62	68.94	34.71	63.37								
				69.70	34.97	63.63								
5	M2000/23-71F	5	78	66.55	52.30	60.99	10.62	14.99						
				67.31	52.55	61.24								



CONNECTOR WITH BRASS BUSH

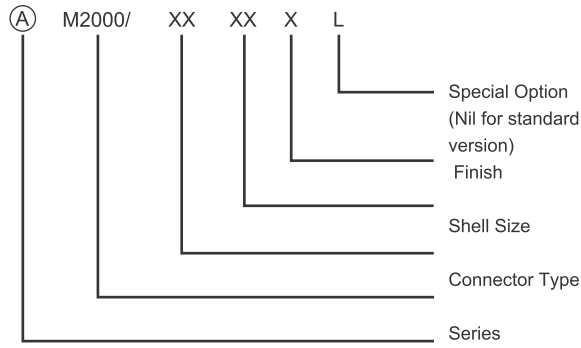


PLUG CONNECTOR WITH INTERFACIAL SEAL



CONNECTOR WITH CLINCH NUT (4 - 40OUNC THREAD)

Ordering information For Standard D-Sub Connector Right Angle PC Tail Contact (Plug)



Series: M2000

Connector Type : 24 - Right angle Plug Connector with PC Tail Contact
23 - Right angle Receptacle Connector with PC Tail Contact

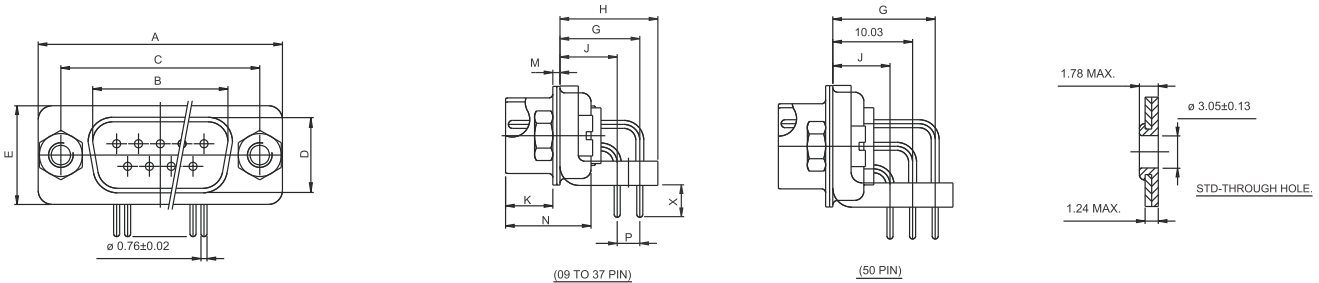
Shell Size : 31 - 9 Pin with right angle PC Tail contact with 3.96 mm PC Tail length from Mounting Bracket
32 - 15 Pin with right angle PC Tail contact with 3.96 mm PC Tail length from Mounting Bracket
33 - 25 Pin with right angle PC Tail contact with 3.96 mm PC Tail length from Mounting Bracket
34 - 37 Pin with right angle PC Tail contact with 3.96 mm PC Tail length from Mounting Bracket
35 - 50 Pin with right angle PC Tail contact with 3.96 mm PC Tail length from Mounting Bracket

Manufacturers Logo

Finish : F - Cadmium plate with yellow passivation
Z - Zinc Plated, N - Nickel Plated,
T - Tin Plated

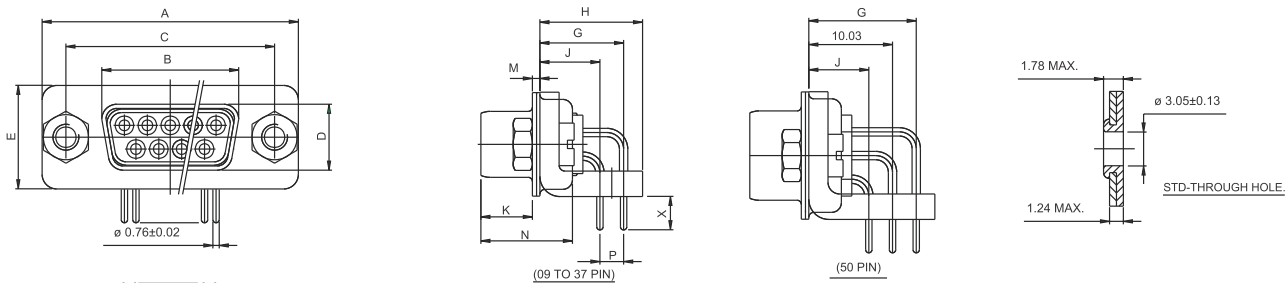
Special Option : L - Launch vehicle application

Plug Connector With Pin Contact, Right Angle PC Tail Contact

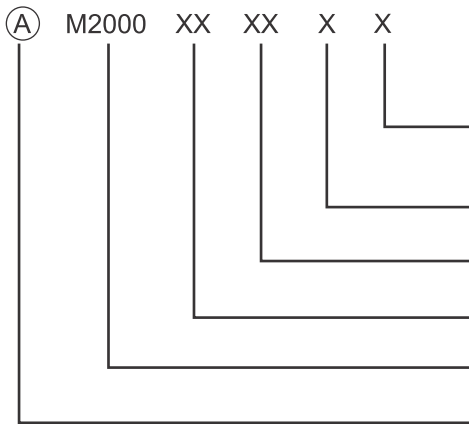


Sr. NO.	CONNECTOR NO.	SHELL SIZE	DIMENSIONS													
			A ±0.38	B ±0.13	C ±0.13	D ±0.38	E ±0.38	G ±0.25	H ±0.25	J ±0.25	K	M ±0.25	N ±0.25	P ±0.10	S ±0.25	X ±0.20
1	M2000/24-31F	9	30.81	16.92	24.99	8.36	12.55	10.03	12.29	7.19	6.04/5.82	0.76	10.72	2.84	19.28	3.96
2	M2000/24-32F	15	39.14	25.25	33.33						27.51					
3	M2000/24-33F	25	53.04	38.96	47.04						29.59					
4	M2000/24-34F	37	69.32	55.42	63.50						57.71					
5	M2000/24-35F	50	66.93	52.81	61.11						11.20				15.37	

Receptacle Connector With Socket Contact, Right Angle PC Tail Contact



Sr. NO.	CONNECTOR NO.	SHELL SIZE	DIMENSIONS													
			A ±0.38	B ±0.13	C ±0.13	D ±0.38	E ±0.38	G ±0.25	H ±0.25	J ±0.25	K	M ±0.25	N ±0.25	P ±0.10	S ±0.25	X ±0.20
1	M2000/23-31F	9	30.81	16.33	24.99	7.90	12.55	10.03	12.29	7.19	6.30/6.04	0.76	10.90	2.84	19.28	3.96
2	M2000/23-32F	15	39.14	24.66	33.33										27.51	
3	M2000/23-33F	25	53.04	38.38	47.04										29.59	
4	M2000/23-34F	37	69.32	54.84	63.50										57.71	
5	M2000/23-35F	50	66.93	52.43	61.11										10.74	



Special option
(Nil for standard version)
Plating Finish
Shell Size
Connector Type
Series

Series: M2000

Connector Type 24- Right angle type Plug Connectors with PC Tail length
23- Right angle Receptacle Connector with PC Tail Contact

Shell Size :

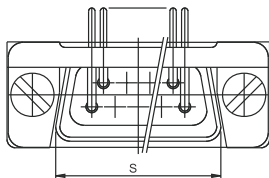
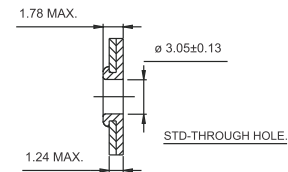
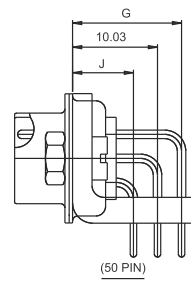
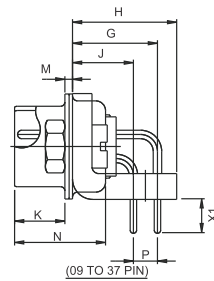
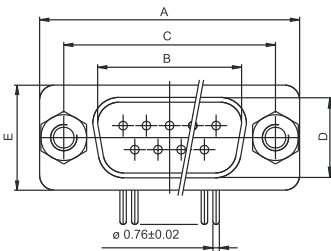
- 49 - 9PinRight angle PC Tail contact with 4.78mm PC Tail length from Mounting Bracket
- 50 - 15PinRight angle PC Tail contact with 4.78mm PC Tail length from Mounting Bracket
- 51 - 25PinRight angle PC Tail contact with 4.78mm PC Tail length from Mounting Bracket
- 52 - 37PinRight angle PC Tail contact with 4.78mm PC Tail length from Mounting Bracket
- 53 - 50PinRight angle PC Tail contact with 4.78mm PC Tail length from Mounting Bracket

Manufacturers Logo

Finish : F - Cadmium plate with yellow passivation
Z - Zinc Plated, N - Nickel Plated,
T - Tin Plated

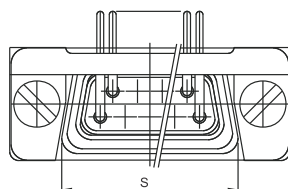
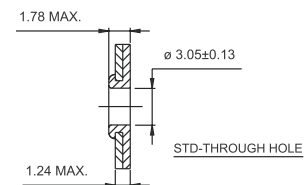
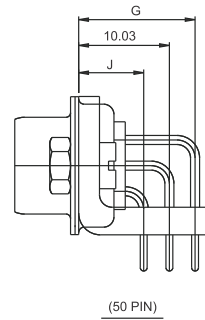
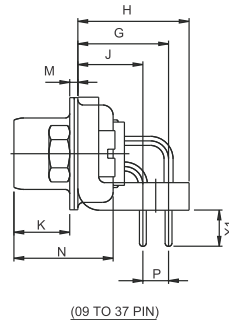
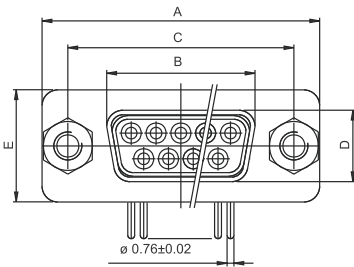
Special Option : L- Launch vehicle application

Plug Connector With Pin Contact, Right Angle PC Tail contact



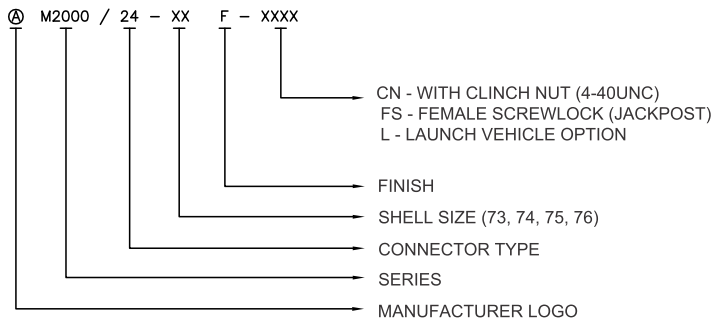
Sr. NO.	CONNECTOR NO.	SHELL SIZE	DIMENSIONS															
			A ±0.38	B ±0.13	C ±0.13	D ±0.38	E ±0.38	G ±0.25	H ±0.25	J ±0.25	K	M ±0.25	N ±0.25	P ±0.10	S ±0.25	X1 ±0.20		
1	⊕M2000/24-49F	9	30.81	16.92	24.99													19.28
2	⊕M2000/24-50F	15	39.14	25.25	33.33	8.36	12.55	10.03	12.29			6.04/5.82	0.76	10.72				27.51
3	⊕M2000/24-51F	25	53.04	38.96	47.04					7.19					2.84			29.59
4	⊕M2000/24-52F	37	69.32	55.42	63.50							5.99/5.68	0.99	10.82				57.71
5	⊕M2000/24-53F	50	66.93	52.81	61.11	11.20	15.37	12.88	15.09									55.32

Receptacle Connector With Socket Contact, Right Angle PC Tail Contact



Sr. NO.	CONNECTOR NO.	SHELL SIZE	DIMENSIONS															
			A ±0.38	B ±0.13	C ±0.13	D ±0.38	E ±0.38	G ±0.25	H ±0.25	J ±0.25	K	M ±0.25	N ±0.25	P ±0.10	S ±0.25	X1 ±0.20		
1	⊕M2000/23-49F	9	30.81	16.33	24.99													19.28
2	⊕M2000/23-50F	15	39.14	24.66	33.33	7.90	12.55	10.03	12.29									27.51
3	⊕M2000/23-51F	25	53.04	38.38	47.04					7.19		6.30/6.04		10.90	2.84			29.59
4	⊕M2000/23-52F	37	69.32	54.84	63.50								0.99					57.71
5	⊕M2000/23-53F	50	66.93	52.43	61.11	10.74	15.37	12.88	15.09									55.32

ORDERING INFORMATION R/A PC TAIL CONNECTORS



CONNECTOR TYPE:

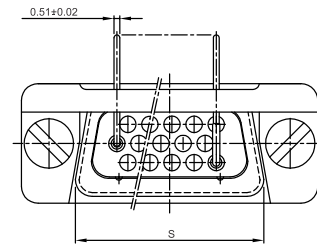
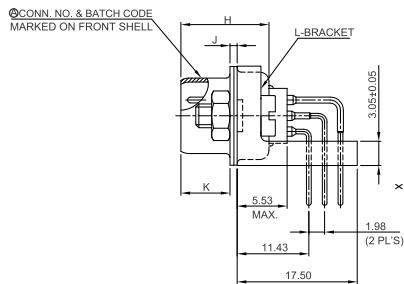
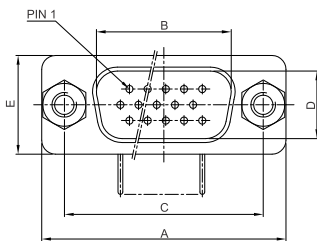
- 23 - RECEPTACLE CONNECTOR (PC TAIL TYPE)
- 24 - PLUG CONNECTOR (PC TAIL TYPE)

FINISH

- F - CADMIUM YELLOW PASSIVATED
- Z - ZINC YELLOW PASSIVATED
- K - ZINC NICKEL FINISH
- T - NICKEL PTFE FINISH
- TI - TIN PLATED

NOTE :

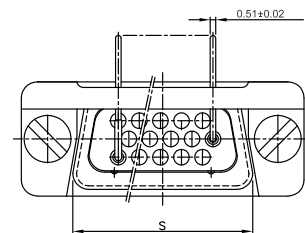
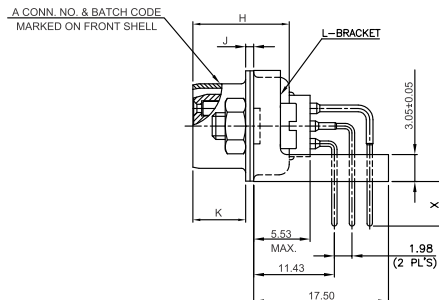
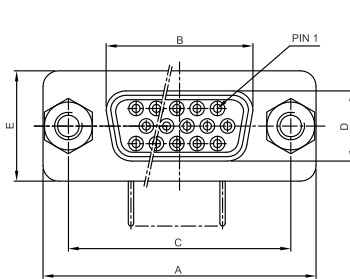
- BRASS BUSH (SPACER) WILL BE SUPPLIED LOOSE WITH THIS CONNECTOR (NOT APPLICABLE FOR CONNECTOR WITH CLINCH NUT)



DIMENSION TABLE (PLUG CONNECTOR)

CONN. NO.	SHELL SIZE	NO/OF PINS	A ±0.38	B ±0.13	C ±0.13	D ±0.38	E ±0.38	H ±0.25	J ±0.25	K	S ±0.25	X ±0.20
M2000/24-73F	1	15	30.81	16.92	24.99	8.36	12.55	10.72	0.76	6.04/5.82	19.28	3.96
M2000/24-74F	2	26	39.14	25.25	33.33					27.51		
M2000/24-75F	3	44	53.04	38.96	47.04			41.30				
M2000/24-76F	4	62	69.32	55.42	63.50			57.71				

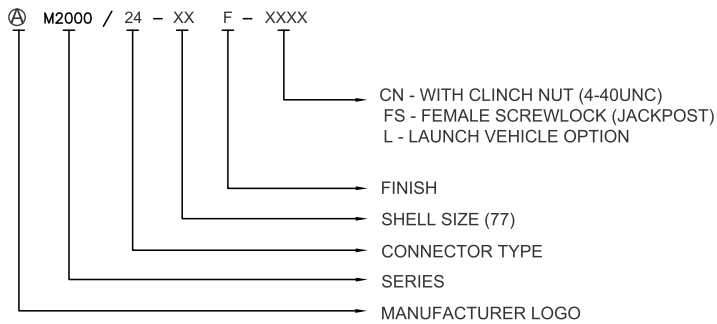
For Straight PC Tail Type Connector (Receptacle)



DIMENSION TABLE (RECEPTACLE CONNECTOR)

CONN. NO.	SHELL SIZE	NO/OF PINS	A ±0.38	B ±0.13	C ±0.13	D ±0.38	E ±0.38	H ±0.25	J ±0.25	K	S ±0.25	X ±0.20
M2000/23-73F	1	15	30.81	16.33	24.99	7.90	12.55	10.90	0.76	6.04/6.30	19.28	3.96
M2000/23-74F	2	26	39.14	24.66	33.33					27.51		
M2000/23-75F	3	44	53.04	38.38	47.04			41.30				
M2000/23-76F	4	62	69.32	54.84	63.50			57.71				

ORDERING INFORMATION R/A PC TAIL CONNECTORS



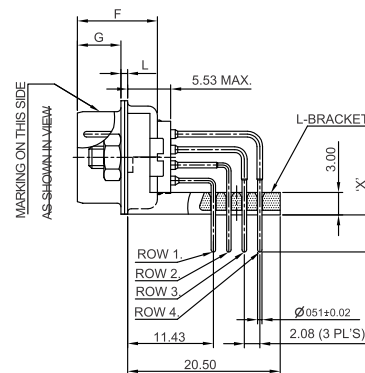
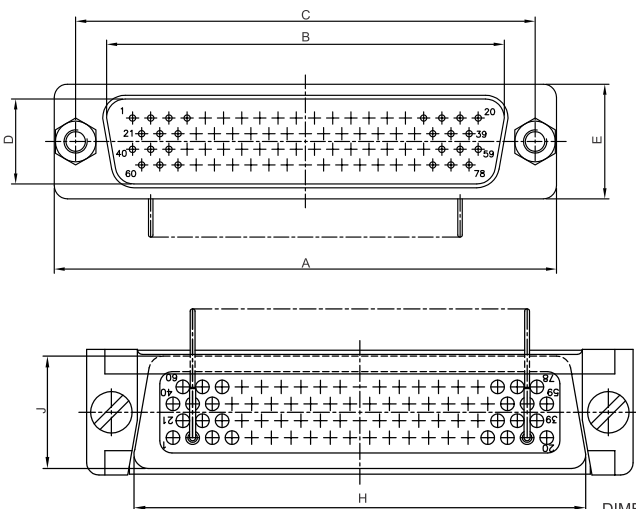
CONNECTOR TYPE:

- 23 - RECEPTACLE CONNECTOR (PC TAIL TYPE)
- 24 - PLUG CONNECTOR (PC TAIL TYPE)

FINISH

- F - CADMIUM YELLOW PASSIVATED
- Z - ZINC YELLOW PASSIVATED
- K - ZINC NICKEL FINISH
- T - NICKEL PTFE FINISH
- TI - TIN PLATED

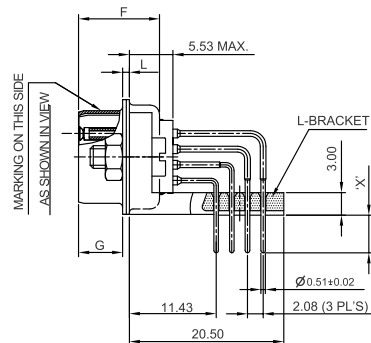
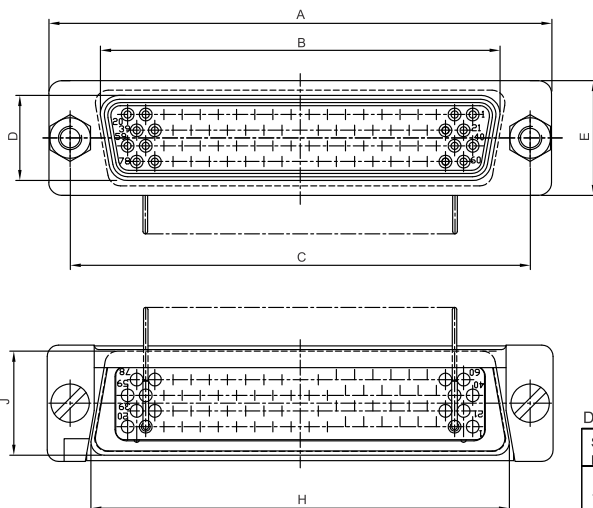
For Straight PC Tail Type Connector (Plug)



DIMENSION TABLE (PLUG CONNECTOR)

SR NO	PART NO.	NO. OF PINS	SHELL SIZE	A	B	C	D	E	F	G	H	J	L	X	
1	M2000/24-77F	78	5	MAX	67.31	52.55	61.24	10.87	15.75	11.15	6.30	55.58	13.82	1.24	±0.20
				MIN	66.55	52.30	60.99	10.62	14.99	10.64	6.05	55.07	13.31	0.74	3.96

For Straight PC Tail Type Connector (Receptacle)

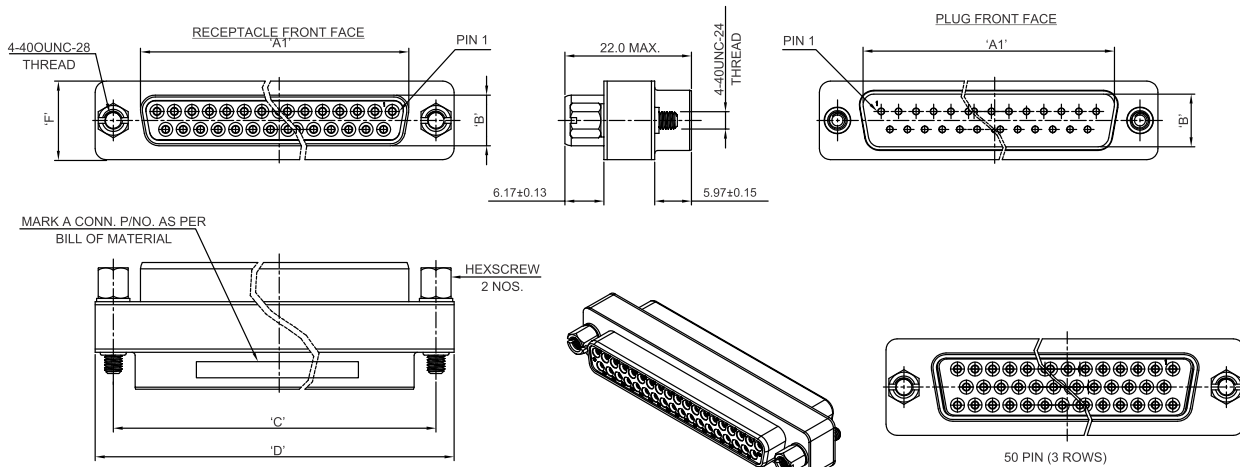
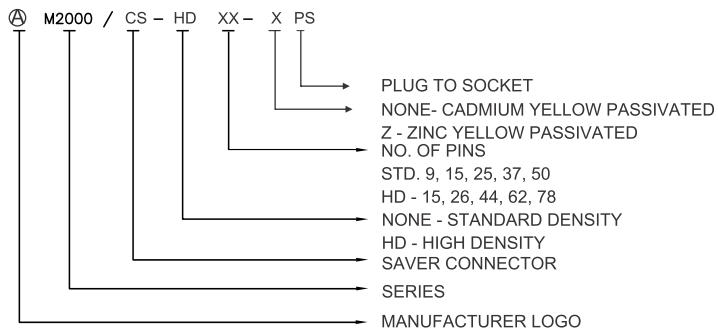


DIMENSION TABLE (RECEPTACLE CONNECTOR)

SR NO	PART NO.	NO. OF PINS	SHELL SIZE	A	B	C	D	E	F	G	H	J	L	X	
1	M2000/23-77F	78	5	MAX	67.31	52.55	61.24	10.87	15.75	11.15	6.30	55.58	13.82	1.24	±0.20
				MIN	66.55	52.30	60.99	10.62	14.99	10.64	6.05	55.07	13.31	0.74	3.96

Ordering Information For Saver Type Connector

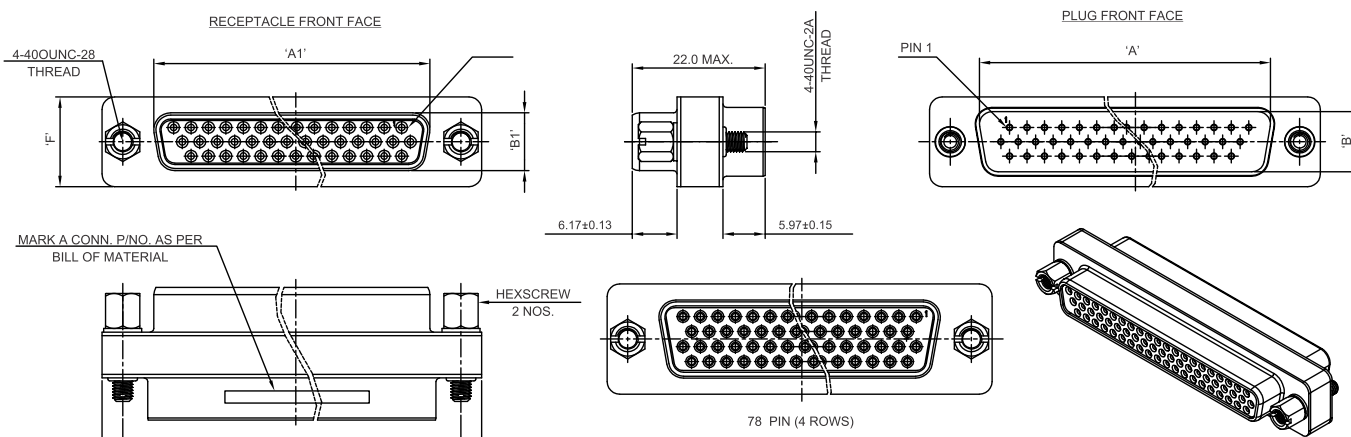
ORDERING INFORMATION FOR SAVER CONNECTORS



DIMENSION TABLE (STANDARD DENSITY)

Sr. NO.	CONNECTOR PART NO.	SHELL SIZE	NO. OF PINS	'A' ±0.13	'B' ±0.13	'A1' ±0.13	'B1' ±0.13	'C' ±0.13	'D' ±0.38	'F' ±0.38
1	M2000/CS-9PS	1	15	16.92		16.33		24.99	30.81	12.55
2	M2000/CS-15PS	2	26	25.25		24.66		33.32	39.14	
3	M2000/CS-25PS	3	44	38.96	8.36	38.38		47.04	53.04	
4	M2000/CS-37PS	4	62	55.42		54.84		63.50	69.32	
5	M2000/CS-37PS	5	78	52.81	11.20	52.43		61.11	66.93	

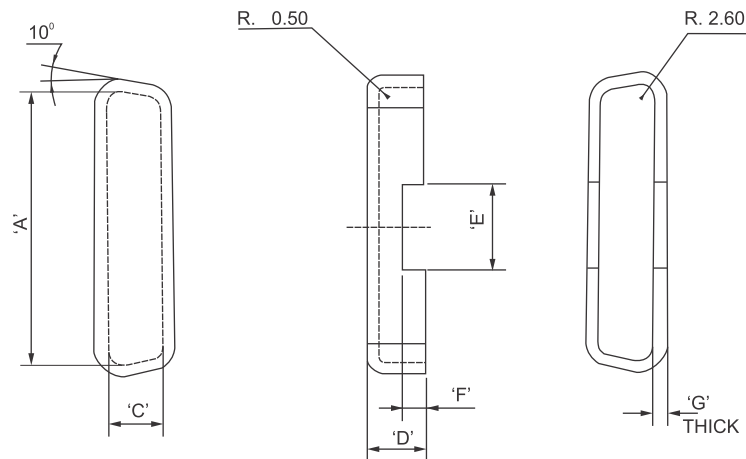
HD Saver Connector



DIMENSION TABLE (HIGH DENSITY)

Sr. NO.	CONNECTOR PART NO.	SHELL SIZE	NO. OF PINS	'A' ±0.13	'B' ±0.13	'A1' ±0.13	'B1' ±0.13	'C' ±0.13	'D' ±0.38	'F' ±0.38
1	M2000/CSHD-15PS	1	15	16.92		16.33		24.99	30.81	12.55
2	M2000/CSHD-26PS	2	26	25.25		24.66	7.90	33.32	39.14	
3	M2000/CSHD-44PS	3	44	38.96	8.36	38.38		47.04	53.04	
4	M2000/CSHD-62PS	4	62	55.42		54.84		63.50	69.32	
5	M2000/CSHD-78PS	5	78	52.81	11.20	52.43	10.74	61.11	66.93	

MATERIAL: PVC per UL 94V-0

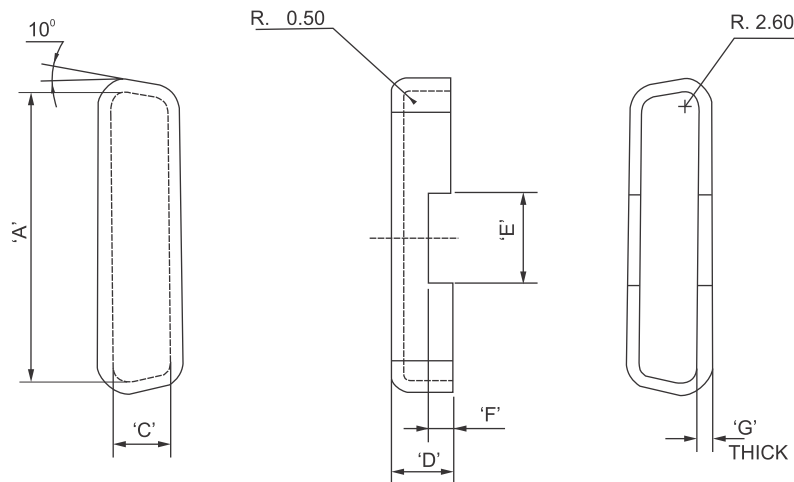


Sr. NO.	Number of Position	Part No.	'A' +0.0 -0.20	'C' +0.0 -0.20	'D' ±0.20	'E' ±0.20	'F' ±0.20	'G' ±0.20
1	Male-09	M2000-109118	17.70	9.10	8.1	8.2	3.0	1.60
2	Male-15	M2000-109119	26.0	9.10	7.7	10.1	3.4	1.60
3	Male-25	M2000-109120	39.70	9.10	7.6	12.0	3.1	1.60
4	Male-37	M2000-109121	56.20	9.10	7.6	14.00	3.2	1.60
5	Male-50	M2000-109122	53.60	11.90	8.1	12.00	2.9	1.60
7	Male-78	M2000-109123	53.60	11.90	8.1	12.00	2.9	1.60
8	Male-104	M2000-109124	56.70	13.50	8.1	12.00	2.9	1.60

Ordering information: Order on part numbers

PLASTIC DUST CAP RECEPTACLE

MATERIAL: PVC per UL 94V-0



Sr. NO.	Number of Position	Part No.	'A' +0.0 -0.2	'C' +0.0 -0.2	'D' ±0.20	'E' ±0.20	'F' ±0.20	'G' ±0.20
1	Female-09	M2000-109125	16.10	7.60	8.1	8.0	3.1	1.60
2	Female-15	M2000-109126	24.50	7.60	8.1	12.6	2.5	1.60
3	Female-25	M2000-109127	38.10	7.60	7.6	12.1	3.1	1.60
4	Female-37	M2000-109128	54.50	7.60	7.8	12.6	2.5	1.60
5	Female-50	M2000-109129	52.10	10.50	8.10	12.0	3.0	1.60
7	Female-78	M2000-109130	52.10	10.50	8.10	12.0	3.0	1.60
8	Female-104	M2000-109131	55.20	12.00	8.10	12.0	3.0	1.60

Ordering information: Order on part numbers

Notice : All information, including illustrations given herein is believed to be accurate at the time of printing. In lieu of design advances, Amphenol reserves the right to change specifications without notice. This publication D-Sub Series Connectors 02/17 supercedes all

Amphenol

A Global Company



NORTH AMERICA

Sales & Product Support

Amphenol PCD
72 Cherry Hill Drive
Beverly, MA 01915 USA
Tel: +1-978-624-3400
Fax: +1-978-927-1513
info@amphenolpcd.com
www.amphenolpcd.com
www.backshellworld.com

Amphenol Aerospace Operations
40-60, Delaware Avenue
Sidney, NY 13838-1395
Tel: +1-607-563-5011
Fax: +1-607-563-5357

Amphenol Canada
Meford Drive
Scarborough,
ON M1B 2X6
Tel: +416-291-4401
Fax: +416-292-0647

Amphenol Fiber Systems International
1300 Central Expressway North
Suite 100 Allen, Texas 75013, USA
Tel: +1-214-547-2400
Fax: +1-214-547-9344

EUROPE

France
Amphenol Socapex S.A.S.
948, Promenade de l'Arve
Bp29, Thyez Cedex
74311, France
Tel: +33-4-5089-2800
Fax: +33-4-5096-1941

United Kingdom
Amphenol Limited
Thanet Way, Whitstable
Kent CT5 3JF, England
Tel: +44-1227-773-200
Fax: 44-1227-276-571

Germany
Amphenol-Air LB GmbH
Am Kleinbahnhof 4
Saarlouis
D-66740, Germany
Tel: 49-6831-9810-00
Fax: 49-6831-9810-30

Italy
Via Barbaiana 5
20020 Lainate (Milano)
Italy
Tel: +39-02-93254.209
+39-02-93254.214
Fax: +39-02-93254-444

Center & East Europe
Amphenol Austria
Wiener Gasse 68
2380 Perchtoldsdorf
Tel: +43-699-10396071
Fax: +43 699 40396071

Amphenol Air-LB
Immeuble Le Doublon
11, Avenue Dobonnet
Courbevoie-Cedex
92407, France
Ph: +33-1-4905-3000
Fax: +33-1-4905-3043

Spain
Amphenol Iberica
Edificio Burgosol Oficina
N 55 C/Comunidad de
Madrid 35 bis -
Las Rozas (Madrid)
Tel: +34-91-6407302
+34-91-6407306
Fax: +34-91-6407307

Holland
Amphenol Benelux
Zadelmaker 121
NL-2401 PD Alphen
aan den Rijn Holland
Tel: +31-172-444903
Fax: +31-172 240254

Sweden
Amphenol
(Nordic & Baltic)
Ångsullsvägen 7
S-187 51 Täby
Sweden
Tel: +46-85-1051816
+46-76-8418600
Fax: +46-70- 2634677
+46-70-2203197

ASIA

India
Amphenol Interconnect India Pvt. Ltd.
105 Bhosari Industrial Area
Pune-411026, India
Tel: +9120-3068-8305
Fax: +9120-2712-9158

Japan
Amphenol Japan
471-1, Deba, Ritto City
Shiga 520-3041, Japan
Tel: +81-77-553-8501
Fax: +81-77-551-2200

Singapore
Amphenol East Asia Ltd.
72 Bendemeer Road
03-33 Luzerne
Singapore 339 941
Tel: 65-6294-2128
Fax: 65-6294-3522

China
Amphenol PCD Shenzhen
3/F Building, A4 Songbai
Industrial Park
East Road of Minghuan
Gongming Town, Baon District
Shenzhen, China
Tel: +86-755-8173-8000
Fax: +86-755-8173-8180

Amphenol Interconnect India Pvt. Ltd.
61 Electronics City
Bangalore-560 100, India
Ph: +9180-2852-3838
Fax: +9180-2852-0418

Korea
Amphenol Daeshin Electronics
558 SoSa, SongNae, Bucheon-City
Kyunggi-Do, Korea 420-130
Tel: +82-32-610-3800
Fax: +92-32-673-2507

ROW

Australia
Amphenol Australia Pty Ltd
2 Fiveways Boulevard
Keysborough
VIC 3173
Ph: +61-3-8796-8888
Fax: +61-3-8796-8801

Africa
Amphenol South Africa
30 Impala Road
2196 Sandton-Chistlehurst
South Africa
Tel: +27-11-783-9517
Fax: +27-11-783-9519

Russia
Amphenol Russia
8-2 Yaroslavskaja Str
129164 Moscow, Russia
Tel: +7-495-937-6341
Fax: +7-495-937-6319

Argentina
Amphenol Argentina
Avenida Callao 930
2nd Floor, Office B Plaza
C1023AAP Buenos Aires
Argentina
Tel: 54-11-4815-6886
Fax: 54-11-4814-5779

Israel
Bar-Tec Ltd.
P.O. Box 279
Kfar Sava, 44102 Israel
Tel: +972-9-7644100
Fax: +972-9-7674324

Turkey
Amphenol International Ltd.
Sun Plaza Ka:15 Maslak Mah.
Bilim Sok. No:5
34398 – Sisli – Istanbul
Tel: +90 212 367 92 19
Fax: +90 212 367 92 21

Brazil
Amphenol do Brasil Ltda
Rua Diogo Moreira 132
CEP 05423-010
Sao Paulo-SP, Brazil
Tel: +55-11-3815-1003
Fax: +55-11-3815-1629

X-ON Electronics

Largest Supplier of Electrical and Electronic Components

Click to view similar products for [D-Sub MIL Spec Connectors](#) category:

Click to view products by [Amphenol](#) manufacturer:

Other Similar products are found below :

[M24308/4-13Z](#) [M8351307-B](#) [D38999/20FJ43HN](#) [D38999/24WG11PB-LC](#) [D38999/24WG41HN](#) [MDM-15PH041P](#) [MDM-21PH041P](#) [MDM-21SH003B-K139](#) [850-056-0812](#) [1218697-4](#) [DBMM25S](#) [MS27467T21F41S](#) [17D25HV](#) [1996840-1](#) [243082-15](#) [1663962-1](#) [1757682-1](#) [17D-E51218-1](#) [17SDA15S](#) [1883533-1](#) [1883886-1](#) [1883889-1](#) [192900-0377](#) [308-CP6P0441-024H](#) [M24308/2-3Z](#) [M24308/4-3Z](#) [M24308/4-4F](#) [M24308/4-4Z](#) [M24308/8-347](#) [M83513/03-E09C](#) [M83723/75W2212N L/C](#) [D38999/24FJ29PN-LC](#) [D38999/24WG11SB-LC](#) [MDM-21PH046P](#) [5-1218949-1](#) [550-031NF1R6K](#) [550E001NF1R3J0L](#) [550T001NF1R6K0L](#) [557T283NF5B08](#) [C115368-1612B](#) [C115370-1717B](#) [DC121073157](#) [443869-3](#) [443869-4](#) [443869-5](#) [550S004NF1R1B0F03](#) [550-031NF1R2E](#) [550E003M2R9J0F04](#) [550E003M3R9J0F05](#) [550E024M104R9J0](#)