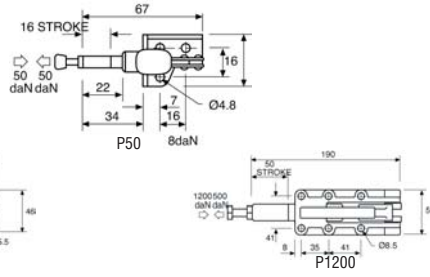


Toggle Clamps - Push Pull



- A range of toggle clamps for use when positive clamping is required
- P50 is light-duty base-mounted clamp
- P600 and P1200 are heavy-duty clamps
- Complete with cushioned PVC handle grip
- Main components steel



	P50	P600	P1200
Nominal holding force	50kg	600kg	1200kg
Weight	0.05kg	0.45kg	1.35kg
Height	42	67	88
Order Code	714-7843	714-7855	714-7867

MAT118/225432.401810

Mfrs. List No.	Order Code	Price Each
P50	714-7843	
P600	714-7855	
P1200	714-7867	

X-ON Electronics

Largest Supplier of Electrical and Electronic Components

Click to view similar products for [hmc brauer](#) manufacturer:

Other Similar products are found below :

[P2500L](#) [V150/2B](#) [P50](#) [V250/2B](#)