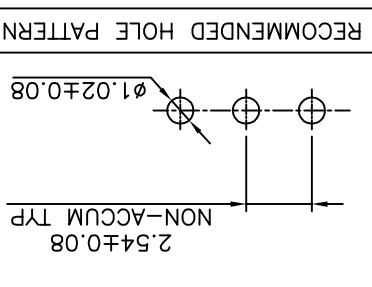


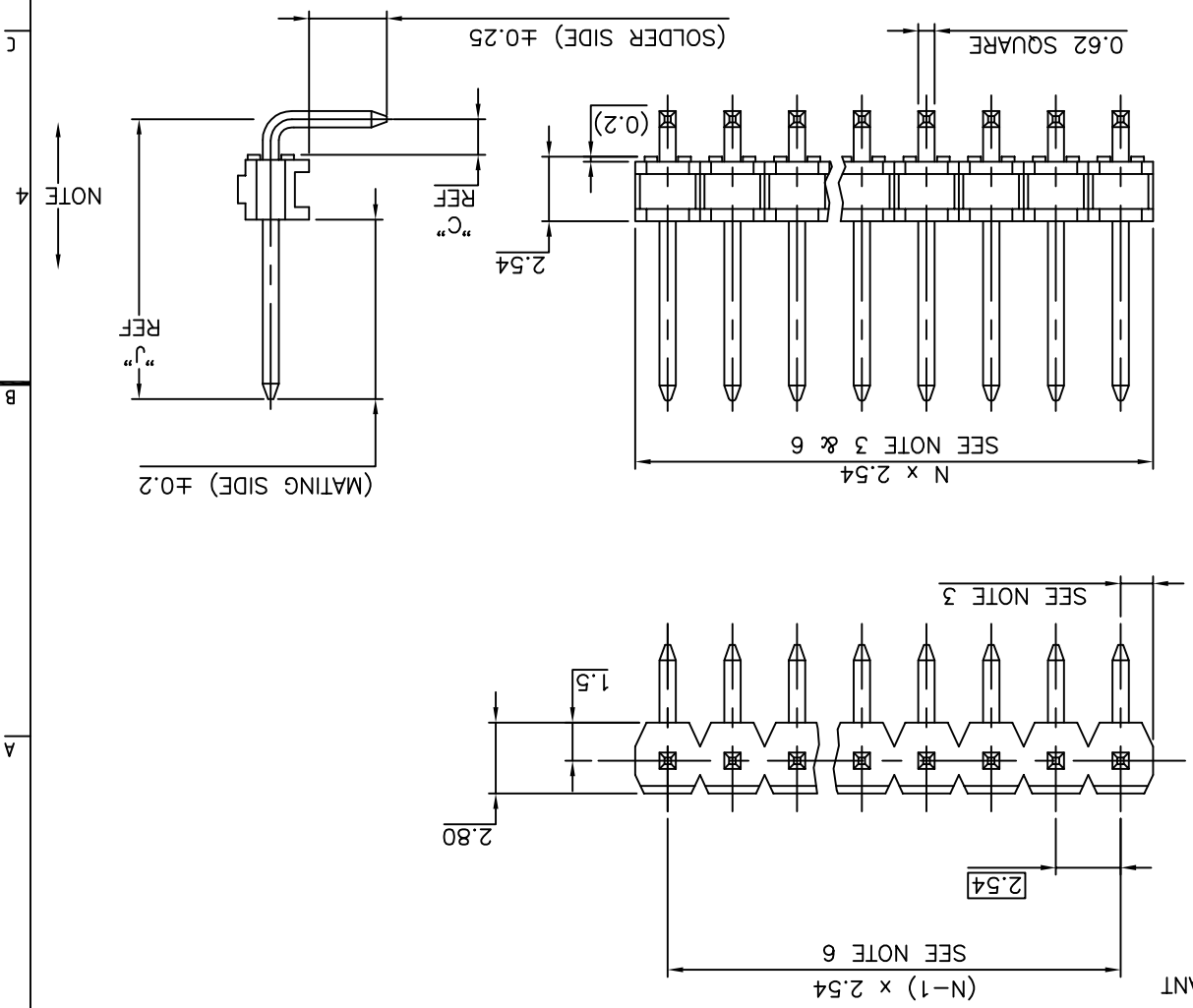
mat'l. code		SEE NOTE 1		date		tolerance unless otherwise specified		projection		product family		title		mm		linear		angles		xxx ±0.05		scale 5:1		FCI		type		CUSTOMER		Drawing			
surf		ISO 1302		ISO 1302		ISO 406 ISO 1101		mm		mm		mm		mm		mm		mm		mm		mm		mm		mm		mm		mm			
AK F12-0802		LMU 12.10.25		dr		MULIN L		99.03.29		AK F12-0042		LMU 12.04.04		chr		engr JMC		99.03.29		AF F20149		DLE 02.02.19		AK AG		revision		sheet		index			
AF F05-0186		LMU 05.05.02		appd JMC		99.03.29		99.03.29		AF F08-0148		JCO 08.05.27		AH F08-0148		JCO 08.05.27		AG F06-0196		LMU 06.06.20		LMU 06.06.20		LMU 06.06.20		LMU 06.06.20		LMU 06.06.20		LMU 06.06.20		LMU 06.06.20	



- THE HOUSING WILL WITHSTAND EXPOSURE TO 260°C ±5°C SOLDER BATH TEMPERATURE FOR 5 SECONDS IN A WAVE SOLDER APPLICATION WITH A 1.6mm MIN THICK CIRCUIT BOARD.
- LABELING:
- MEETS PACKAGING SPECS AS PER GS-14-920
- LEGAL STATEMENT: SEE GS-22-008

- 8. ROHS COMPATIBLE PRODUCT SPECIFICATIONS
- 7. FOR STANDARD SELECTIVE GOLD PLATED PRODUCTS, SEE DRAWING 77315.
- 6. TO DETERMINE DIMENSIONS:
- 5. PRODUCT PACKAGED IN POLY BAGS.
- 4. PIN PUSH OUT FORCE : 12N MIN.
- 3. DIM 1.27^{+0.03} FOR MOULDED SIDE(S) ONLY. IF SIDE(S) ARE BROKEN, DIM 1.02 TO 1.7 MAX APPLIES.
- 2. PIN MATERIAL : PHOSPHOR BRONZE.
- 1. HOUSING MAT'L : HIGH TEMPERATURE THERMOPLASTIC FLAME RETARDANT PER UL94-V0, COLOR BLACK.

- NOTES:
- 1 = 0.76µm FULL GOLD/GXT, OVER 1.27µm NI MIN
 - 3 = 3.81µm FULL TIN/LEAD OVER 1.27µm NI MIN. WHEN "LF" IS REQUIRED, 2µm MATTE TIN OVER 1.27µm MIN NICKEL IS PROVIDED INSTEAD OF TIN-LEAD
 - 8 = 0.38µm FULL GOLD/GXT, OVER 1.27µm NI MIN
- PLATING:
- INDICATES THE PRODUCT IS ROHS COMPLIANT & COMPATIBLE, SEE NOTE 8
 - TOTAL NB OF POSITIONS 02 TO 36
 - PIN STYLE SEE SHEET 2



6 5 4 3 2 1 A B C D

6 5 4 3 2 1 A B C D



Flconnct.com

Copyright FCI

PRODUCT NUMBER

75168-YXX-XXLF

APPLICATION SPECIFIC			
PIN STYLE	MATING	"C"	"J"
01	5.72	2.57	1.4
02	5.72	5.11	1.4
03	5.72	7.65	1.4
04	5.72	10.19	1.4
05	5.72	12.73	1.4
06	5.72	15.27	1.4
07	5.72	5.11	3.94
08	5.72	7.65	3.94
09	5.72	10.19	3.94
10	5.72	12.73	3.94
11	5.72	15.27	3.94
13	5.72	3.45	1.4
14	5.72	5.99	3.94
15	5.72	8.53	6.48
16	8.51	3	1.4
17	8.51	5.54	3.94
19	5.72	3.05	1.4
20	5.84	2.29	1.4
21	5.72	11.07	9.02
22	11.71	3.2	1.4
23	3	2.94	1.94
24	4.8	6.16	1.94
27	3.55	3.3	1.4
28	10	3.2	1.4
29	7.30	7.30	1.4
30	8.10	12.50	1.4
31	6.70	3.00	1.4
31	6.70	3.00	1.4

mat'l. code	SEE SHEET 1	ISO 1302	surface	tolerance	ISO 406 ISO 1101	projection	product family	BSTIK
lfr	ecrn no	dr	date	tolerances unless otherwise specified	mm	title	HEADER,SR,RA, POL,2.54mm	
AB	F00196	LMU	00.04.19		scale			
AC	F10167	LMU	01.03.12	dr	MULIN L	99.03.29	99.03.29	
AD	F20116	DLE	02.01.15	engr	JMC	99.03.29	99.03.29	
AE	F06-0196	LMU	06.06.20	chr				
AF	F12-0042	LMU	12.04.04	appd	JMC	99.03.29	99.03.29	
sheet	revision	sheet	index					

dwg no	75168	sheet 2 of -	size	A3
type	CUSTOMER	Drawing		

PDM: Rev:AK

STATUS:Released

Printed: Oct 30, 2012

C

B

A

C

B

A

6

5

4

2 3

1

6

5

4

3

2

1

D

C

B

A

6

X-ON Electronics

Largest Supplier of Electrical and Electronic Components

Click to view similar products for [Headers & Wire Housings](#) category:

Click to view products by [FCT Electronics](#) manufacturer:

Other Similar products are found below :

[95000-104TRLF](#) [10135584-644402LF](#) [DF62W-EP2022PCA](#) [95000-106TRLF](#) [DF62W-2022SCA](#) [DF62W-EP2022PC](#) [2203348](#) [DF62W-2022SC](#) [1084018](#) [1029039](#) [1084017](#) [802-10-012-10-002000](#) [1112640](#) [1112639](#) [891-007-9SS-BST1T](#) [000-34000](#) [0008550134](#) [0009482033](#) [0009507031](#) [57102-F02-18ULF](#) [57102-S06-03LF](#) [57202-S52-04LF](#) [PCN6-15S-2.5E](#) [0039019024](#) [58102-G61-06LF](#) [582553-1](#) [0009485154](#) [0009508121](#) [009176003701906](#) [0022285053](#) [0050291907](#) [018731A](#) [LY20-4P-DT1-P1E-BR](#) [02.125.8002.8](#) [60101931](#) [60598-1 \(Cut Strip\)](#) [M1625-3R/100](#) [61062-3](#) [61082-181009](#) [CSU011177004](#) [636-1427](#) [638009-1](#) [641938-9](#) [641991-4](#) [644168-1](#) [644827-2](#) [647662-1](#) [65039-019ELF](#) [65692-001LF](#) [65781-018](#)