

VERONEX EMC Cases

VERONEX EMC cases have been introduced to meet the increasing demand for protection from potentially damaging E and H field interferences.

The mouldings have been coated with copper silver paint (25m - 50m) and the tongue and groove joints ensure good continuity along the enclosure. The end panels are also uniquely retained to ensure good electrical contact when coatings are applied.

The enclosures available offer a variety of styles, plastic end panels, metal end panels, battery compartments and accessories.

Good adhesion is achieved on plastic substrate and the copper silver is resistant to atmospheric oxidation and corrosion. Coatings are applied by conventional spraying techniques using electroform masks for precise selectivity of coverage.

Contents of kit

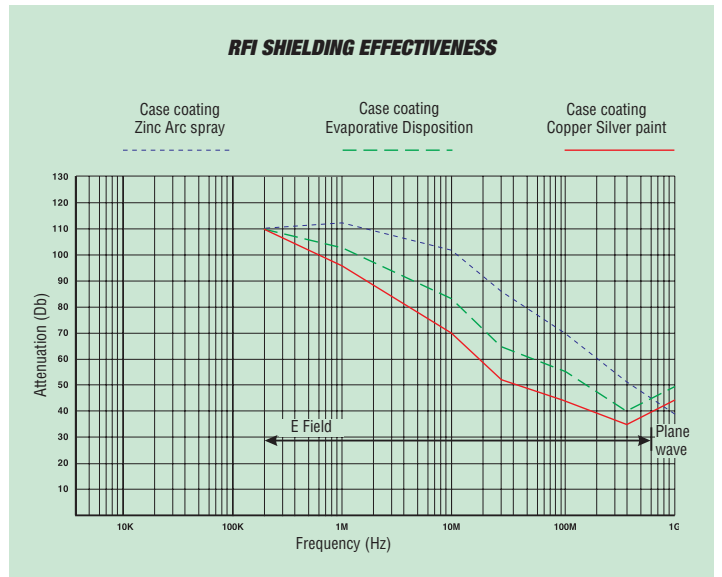
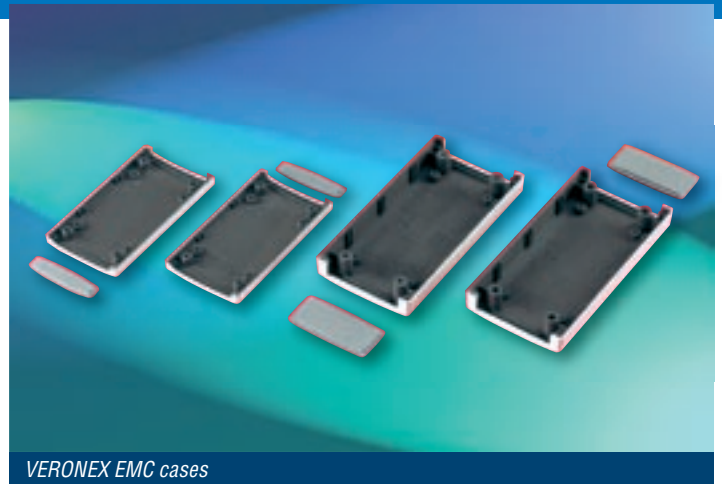
Description	Qty	Material/Finish
Base moulding	1	RAL 7035,UL94-V0 flame retardant ABS
Top moulding	1	RAL 7035,UL94-V0 flame retardant ABS
Moulded end panel	2	RAL 7035,UL94-V0 flame retardant ABS
Case fixing screws	4	
Self adhesive feet (sizes 3,4 and 5)	4	
Self tapping pcb screws	4	
Battery cover in battery compartment versions (as base moulding)		

Ordering information

Size	H	W	D	Order code
1	90	50	16	75-245323
	90	50	24	75-245324
2	120	60	30	75-245325
3 ★	150	80	30	75-245327
4	190	100	40	75-245328
	190	100	60	75-245326

★ Note: Battery compartment version

For details of a full range of VERONEX compatible accessories, please refer to page 15.



X-ON Electronics

Largest Supplier of Electrical and Electronic Components

Click to view similar products for [vero manufacturer](#):

Other Similar products are found below :

[173-202579H](#) [503-232983F](#) [503-232948H](#) [503-232971B](#) [20-313145](#) [16-269316](#) [503-232963A](#) [75-265742](#) [75-38118](#) [950-201784G](#) [16-269313](#) [75-265739](#) [503-232946A](#) [20-313139](#) [18-1657](#) [20-313138](#) [20-313144](#) [75-227911](#) [18-0222](#) [645-10028](#) [75-265740](#) [01-0042](#) [75-3019](#)
[75-227895](#) [75-227901](#) [503-232985B](#) [20-313140](#) [75-227910](#) [503-232954B](#) [20-313143](#) [01-0021](#) [20-2136](#) [20-313137](#) [75-2861](#) [75-226685](#)
[950-202001E](#) [75-2860](#) [20-2137](#)