

# M1

## Panel Mounted

Keyswitches

### M1

mm)  $\nabla$  15.1 × 15.1

- double pole change-over or three circuit selector switching functions
- key trapping option
- two body style options
- gold-plated contacts
- PCB Terminals

ing 250 VAC, 100 mA

mm) 18 × 16  
body style A  
18 × 18  
body style E

ator ■ key (common or differs)

als none



### Preferred Range

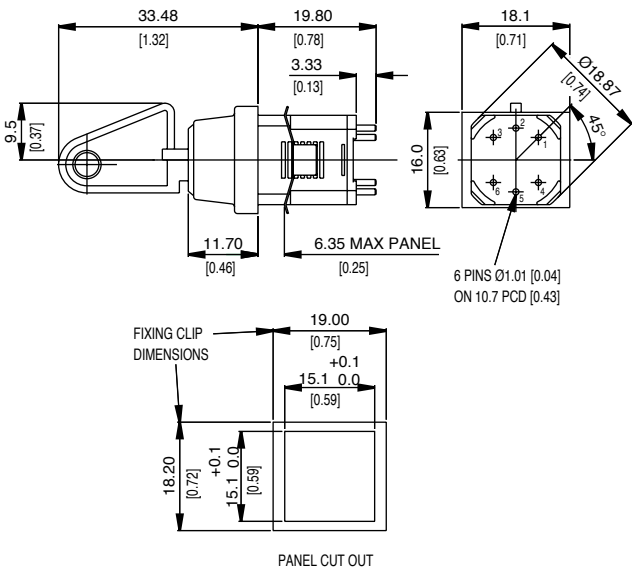
Reference	Terminal	Circuit	Actuator	Contacts	Electrical rating
AE	Pins	2 pole CO	Key	Gold-plated	250 VAC, 100 mA
AE	Pins	2 pole CO	Key	Gold-plated	250 VAC, 100 mA
AJ	Pins	3 circuit selector	Key	Gold-plated	250 VAC, 100 mA



# M1

## Specifications

Key	Nickel silver
Body	Glass-fibre reinforced nylon
Springs	Stainless steel
Contacts	Moving - gold-plated phosphor bronze, Fixed - gold-plated brass
Terminals	1.01 mm (0.04 in) dia × 3.3 mm (0.13 in) gold-plated brass
Temperature range °C	-20°C to +60°C
Mechanical life	50,000 operations (minimum)
Mounting	Retaining clip
Actuators	Key
Switching function	Double pole change-over, three circuit selector
Key indexing	90°



## Recommended maximum electrical ratings

Voltage (max)	Resistive load (A)	Inductive load	Horsepower	Approval
250 VAC	100 mA	-	-	General rating - 50,000 operations
0-15 VDC	100 mA	-	-	General rating - 50,000 operations
15-30 VDC	100 mA	-	-	General rating - 50,000 operations

# M1

## Operating Characteristics

Switching function	Reference	Actuator		Body style (mm)	Key trapping	Diagram
		Type	Code			
Double pole change-over	M1BAAAAE	Key	001	A - 18 × 16	No	
	M1HAAAAE	Key	007	A - 18 × 16	No	
	M1HAEEAE	Key	007	E - 18 × 18	No	
	M1MAAAAE	Key	Production run key coding	A - 18 × 16	No	
	M1MAEEAE	Key	Production run key coding	E - 18 × 18	No	
Double pole change-over	M1MCAAAE	Key	Production run key coding	A - 18 × 16	Yes	
	M1MCEAAE	Key	Production run key coding	E - 18 × 18	Yes	
Three circuit selector	M1HAAAAJ	Key	007	A - 18 × 16	No	
	M1HAEEAJ	Key	007	E - 18 × 18	No	
	M1MAAAAJ	Key	Production run key coding	A - 18 × 16	No	
	M1MAEEAJ	Key	Production run key coding	E - 18 × 18	No	

## Type coding key for standard products

Type	Code	Key	Example: M1
Code	B	001 key	B
	H	007 key	A
	M	Production run key coding	A A A A E
ing	A	Key removable in all positions	
	C	Key trapped horizontally, right	
yle	A	18.0 mm (0.710 in) × 16.0 mm (0.630 in) rectangular bezel	
	E	18.0 mm (0.710 in) square bezel	
our	A	Black	
nal	A	1.01 mm (0.040 in) dia × 3.30 mm (0.130 in)	
ion	E	Double pole change-over	
	J	Three circuit selector	



## X-ON Electronics

Largest Supplier of Electrical and Electronic Components

*Click to view similar products for [saia-burgess](#) manufacturer:*

Other Similar products are found below :

[BVM3FYR-ULS](#) [KOP512KK7MWVPN00A](#) [BVM3FYULS](#) [B12-253-B-3](#) [B14HD-L-254-B-4](#) [B22M-255-M-36](#) [B4HDM-253-M-36](#)  
[KOL251H7MKVPN00](#) [KOP170J7MWVPN00](#) [404019/464407](#) [XGG2-88-J22Z1](#) [XCF8Z1](#) [KOL321H7MRVPN00](#) [KOP260F0MWVAN00](#)  
[414119/464407](#) [V9NLR1V-3.0M](#) [F4T7YCGPUL](#) [KOL360H7MRVPN00](#) [XCF5Z1](#) [XGG2-88-S20Z1](#) [J84211213](#) [195225-230](#) [V3SYR1UL](#)  
[P2/3FCC 209](#) [QA4/3260](#) [XGK2-88-S20Z1](#) [V4NCT7-A1](#) [UDS1UR6M50CANCZ183](#) [B14HD-254-B-4](#) [XCG12-L1](#) [F5T8GPUL](#) [XCG5-J1Z1](#)  
[V4NC4SET9-NI1](#) [V4LSK2](#) [XGG2-88-J23Z1](#) [V9N](#) [XCG10-J1Z1](#) [XCG11-J1Z1](#) [4BRSH](#) [B14HDP-253-B-4](#) [XGG6-88](#) [XCG13-L1](#)  
[KOL312H7MRVPN00](#) [XGC2-88-J23](#) [XGC2-88-S20Z1](#) [195224-230](#) [V4NT8](#) [282367-027](#) [V4NCT7-Y1](#) [XCG5-S1Z1](#)