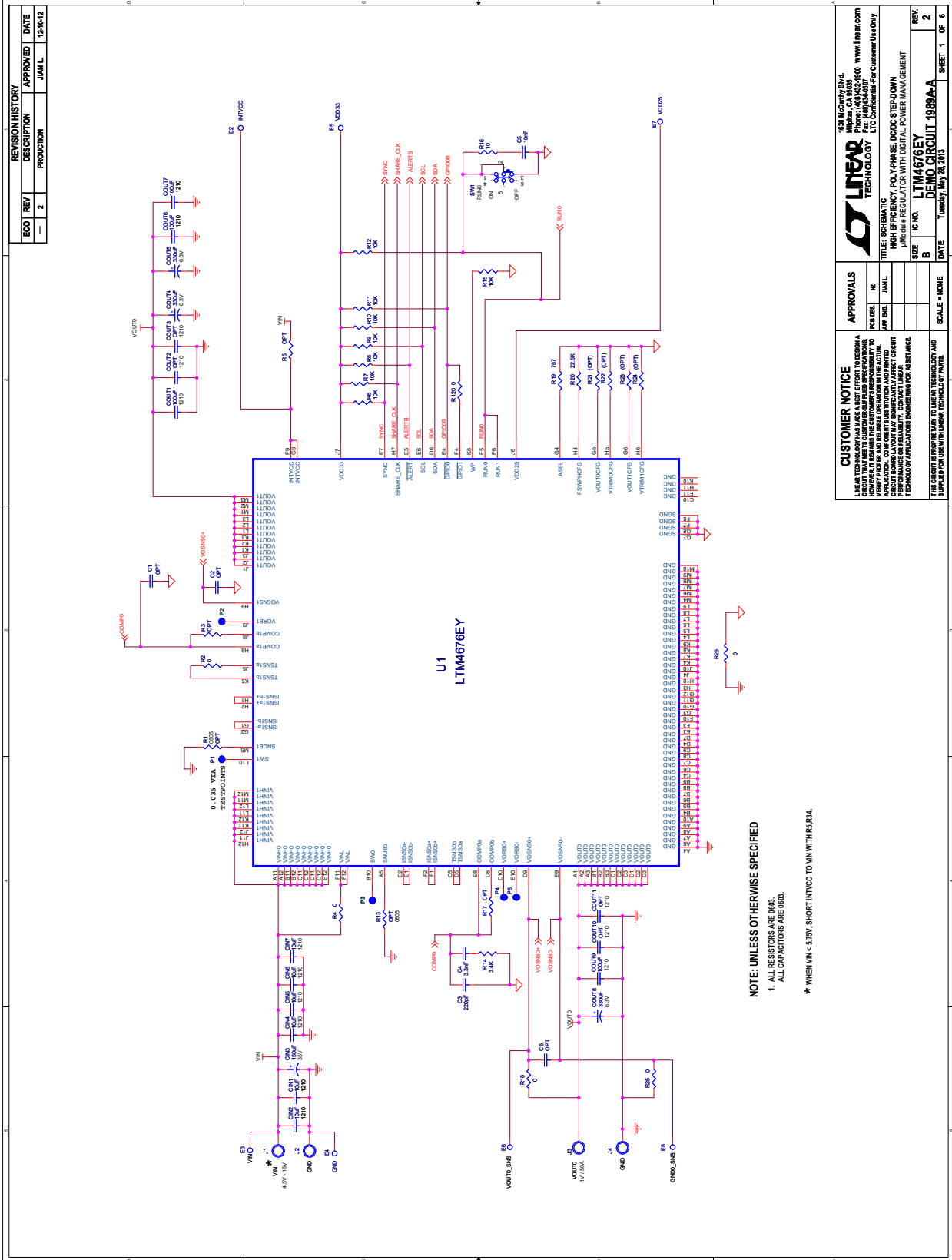


# DEMO MANUAL DC1989A-A

## SCHEMATIC DIAGRAM



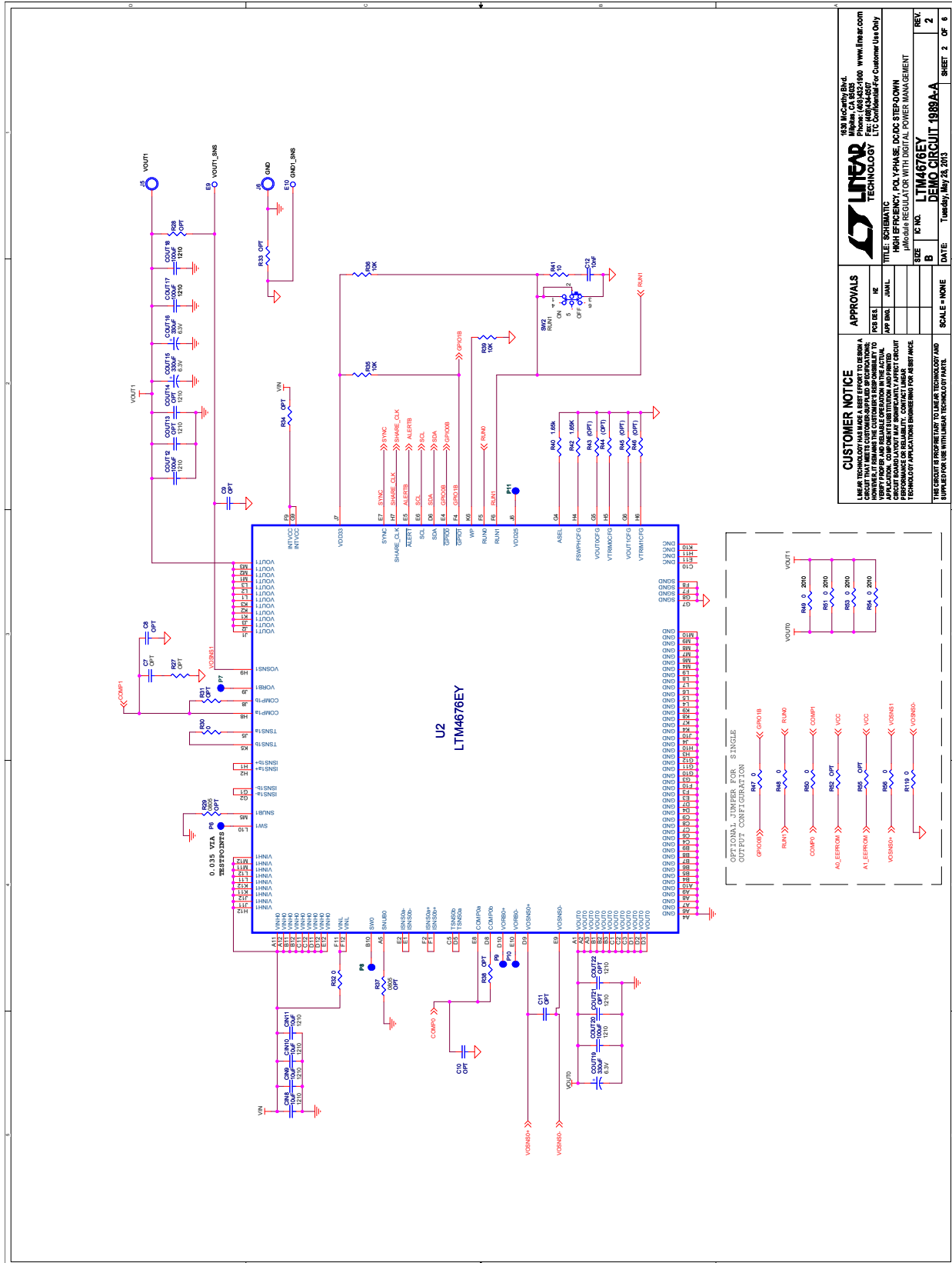
REVISION HISTORY			
ECO	REV	DESCRIPTION	DATE
—	2	PRODUCTION	JUN 11 12

APPROVALS		SCALE = NONE	
DESIGN	DATE	DESIGN	DATE
REV. 1	2	REV. 2	6

**CUSTOMER NOTICE**  
 LINEAR TECHNOLOGY HAS MADE A BEST EFFORT TO DESIGN A SCHEMATIC THAT REPRESENTS THE CUSTOMER'S REQUEST TO VERIFY PROPER AND RELIABLE OPERATION IN THE ACTUAL APPLICATION. THE SCHEMATIC IS PROVIDED AS A GUIDE ONLY. CUSTOMER SHOULD VERIFY THE ACTUAL OPERATION OF THE CIRCUIT UNDER ALL OPERATING CONDITIONS AND TAKE NECESSARY PRECAUTIONS TO AVOID DAMAGE TO THE IC OR OTHER COMPONENTS. CUSTOMER SHOULD CONSULT THE IC DATA SHEET FOR THE LATEST REVISIONS AND APPLICATION NOTES.

LINEAR TECHNOLOGY INC.  
 1351 ACACUITY BLVD.  
 FOLSOM, CA 95630  
 PHONE: (916) 352-1000 WWW.LINEAR.COM  
 FAX: (916) 352-2675  
 E-MAIL: CUSTOMER@LINEAR.COM  
 TITLE: SCHEMATIC  
 HIGH EFFICIENCY, POLYPHASE, DC/DC STEP-DOWN  
 μModule REGULATOR WITH DIGITAL POWER MANAGEMENT  
**LTM4676EY**  
 DEMO CIRCUIT 1989A-A  
 DATE: Tuesday, May 23, 2012

**SCHEMATIC DIAGRAM**



**CUSTOMER NOTICE**  
 LINEAR TECHNOLOGY MAKES A BEST EFFORT TO DESIGN A CIRCUIT THAT MEETS CUSTOMER-SUPPLIED SPECIFICATIONS. WE DO NOT WARRANT THE PERFORMANCE OF ANY PRODUCT OR SYSTEM IN THE ACTUAL OPERATION OF THE CIRCUIT. CUSTOMER SHOULD VERIFY THE PERFORMANCE OF THE CIRCUIT UNDER ALL OPERATING CONDITIONS. CONTACT LINEAR TECHNOLOGY FOR SUPPORT INFORMATION.

**APPROVALS**

DESIGN	IN
APP. INCL.	JAIL

**SCALE** = NONE

**DATE** = Tuesday, May 28, 2013

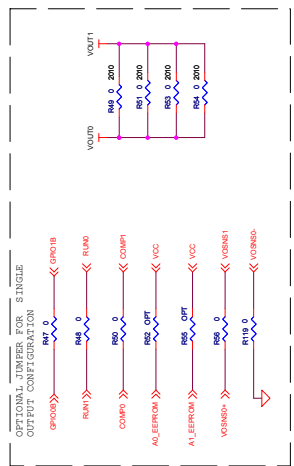
**REV.** 2 OF 6

**1633 McCarty Blvd.**  
**www.linear.com**  
**Phone: (408) 735-0000**  
**Fax: (408) 735-0007**  
**LTC Confidential - For Customer Use Only**

**LINEAR TECHNOLOGY**

**TITLE: SCHEMATIC**  
**HIGH EFFICIENCY, POLY-PHASE, MODE STEP-DOWN**  
**µModule REGULATOR WITH DIGITAL POWER MANAGEMENT**

**SIZE** B  
**IC INC.** LTM4876EY  
**DEMO CIRCUIT: 1989A-A**









**SCHEMATIC DIAGRAM**

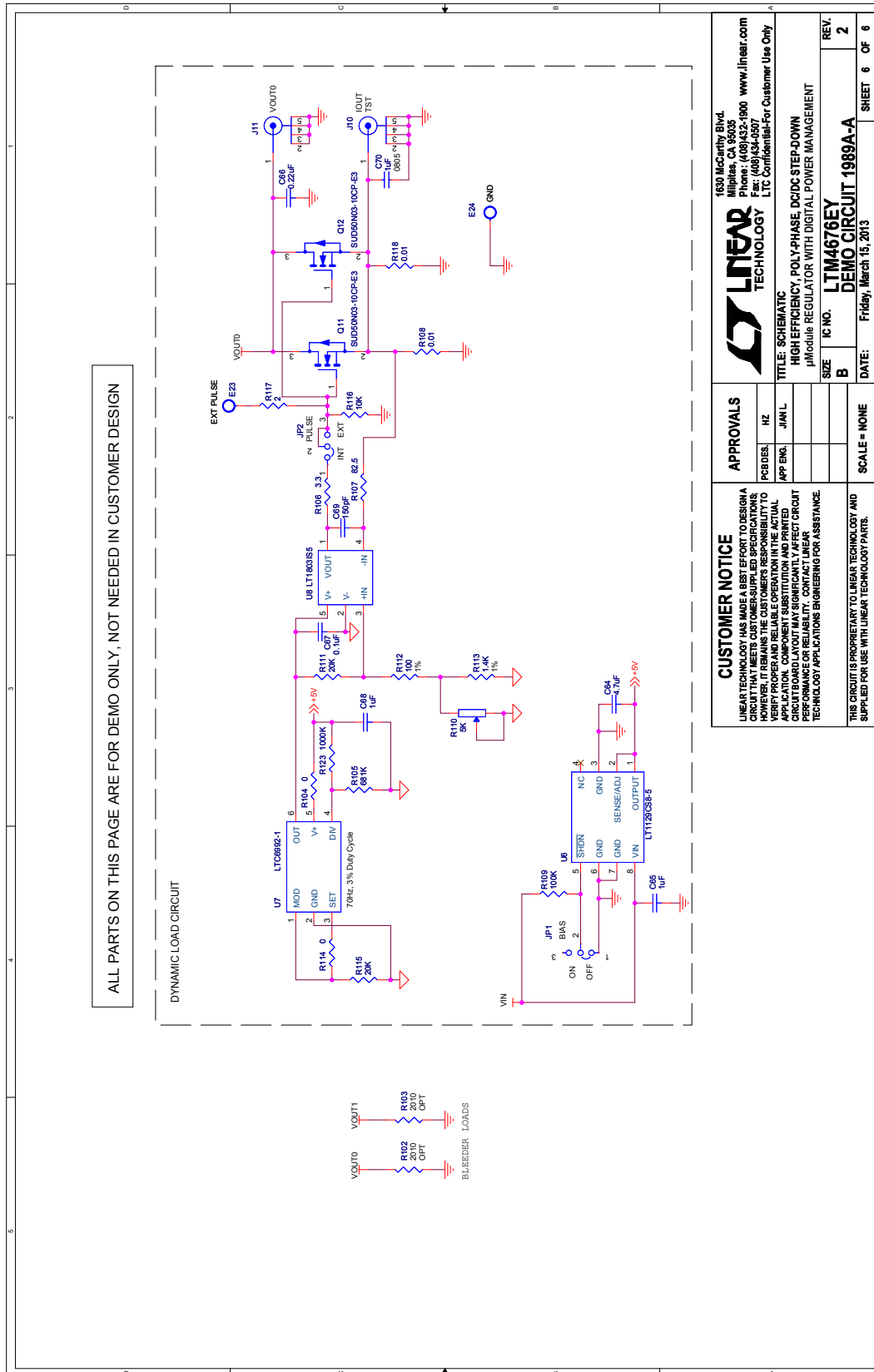


Figure 7. Circuit Schematic

## X-ON Electronics

Largest Supplier of Electrical and Electronic Components

*Click to view similar products for [linear technology manufacturer](#):*

Other Similar products are found below :

[LTC1503CS8-1.8](#) [LTC1622CMS8](#) [LTC1740CG](#) [LT1073CN8-5#PBF](#) [LT1342CG](#) [LT1376HVIS](#) [LT1491A](#) [LT1576CS8](#) [LTC1338CG](#)  
[LTC1592BCG](#) [LTC1595BCN8](#) [LTC1698ES](#) [LTC2442CGPBF](#) [LT1021DCN8-5#PBF](#) [LT1079CN#PBF](#) [LT1674CN](#) [LT3023EDD](#)  
[LT1076HVCT7#PBF](#) [LT1101CN8#PBF](#) [LT1168CS8#PBF](#) [LT1171CQ#PBF](#) [LT1210CT7#PBF](#) [LT1308BCS8#PBF](#) [LT1913EDD#PBF](#)  
[LT1172CT#PBF](#) [LT3473EDD#PBF](#) [LT1376IS8-5#PBF](#) [LT1720CS8#PBF](#) [LT1785AIS8#PBF](#) [LT1944EMS#PBF](#) [LT3435EFE#PBF](#)  
[DC993A](#) [DC987B-E](#) [DC985A-A/B](#) [DC956A](#) [DC951A](#) [DC936A](#) [DC918C-E](#) [DC917A](#) [DC906A](#) [DC903A-B](#) [DC895A-C](#) [DC817A](#) [DC809A](#)  
[DC790A](#) [DC773A](#) [DC770C](#) [DC768A](#) [DC761A-A](#) [DC745A](#)