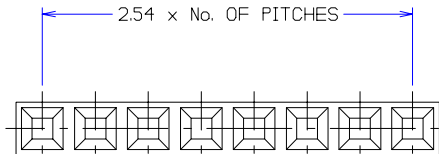


Customer Information Sheet

DRAWING No.- M20-106XX00 SHEET 2 OF 2 IF IN DOUBT - ASK © NOT TO SCALE THIRD ANGLE PROJECTION ALL DIMENSIONS IN mm



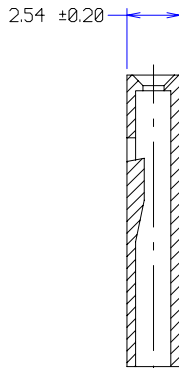
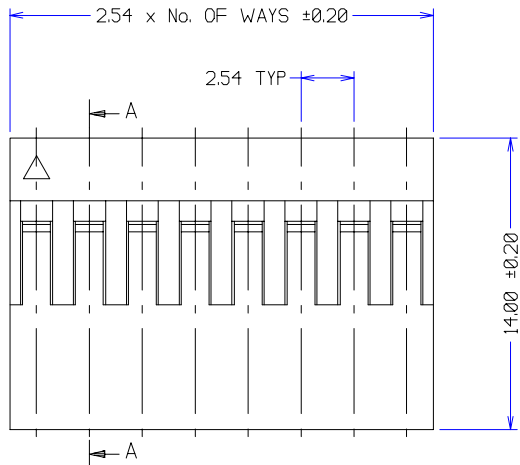
SPECIFICATIONS:

CURRENT RATING = 1 AMP
 VOLTAGE RATING = 250V AC/DC
 WITHSTAND VOLTAGE = 800V AC/MINUTE
 INSULATION RESISTANCE = 1000 MEGOHMS/MINUTE
 TEMPERATURE RANGE = -25°C TO +95°C

ORDER CODE:
M20-106XX00
No. OF WAYS
01 TO 40

NOTES:

- THIS MOULDING ACCEPTS:
 M20-11600XX - REELED FEMALE CRIMP TERMINALS
 M20-11800XX - LOOSE FEMALE CRIMP TERMINALS
- THE ABOVE SPECIFICATIONS APPLY WHEN USED WITH THE TERMINALS LISTED IN NOTE 1.



SECTION A-A

4	03.12.97	4189
3	21.07.97	3995
2	11.06.96	3354
1	04.04.96	----
ISS:	DATE	C/N
APPROVED:		
CHECKED:		
DRAWN: A LIOTTA		
CUSTOMER REF.		
ASSEMBLY DRG:		



TOLERANCES
 X. = ±1mm
 X.X = ±0.25mm
 X.XX = ±0.10mm
 X.XXX = ±0.01mm
 ANGLES = ±1°
 UNLESS STATED

MATERIAL:
 P.P.O. UL94V-1

FINISH: CLEAN, FLASH FREE

S/AREA: mm²

TITLE:
 254mm SIL CRIMP MOULDING

HARWIN INC U.S.A. TEL: (812) 285 0055 FAX: (812) 285 0056	HARWIN PLC UK. TEL: 01705 370451 FAX: 01705 314590	HARWIN PTE SINGAPORE TEL: 65 7794909 FAX: 65 7793868	HARWIN CONNECTORS KOREA TEL: 822 521 0747 FAX: 822 521 0749
--	---	---	--

DRAWING NUMBER: M20-106XX00

SHT 2 OF 2

X-ON Electronics

Largest Supplier of Electrical and Electronic Components

Click to view similar products for [FFC & FPC Connectors](#) category:

Click to view products by [Harwin](#) manufacturer:

Other Similar products are found below :

[HFW11R-1STE1H1LF](#) [FH29B-100S-0.2SHW\(99\)](#) [FA5S008HP1](#) [FH29B-120S-0.2SHW\(99\)](#) [FH29B-80S-0.2SHW\(99\)](#) [FHS-16](#) [FPH-2022G](#)
[52610-1075](#) [52610-1275](#) [52610-1934](#) [XF3M\(1\)-1415-1B-R100](#) [501864-3091-TR225](#) [0525594033](#) [086210010340800](#) [086222026001800](#)
[52271-2869-CUT-TAPE](#) [62674-201121DLF](#) [62684-36210E9ALF](#) [52610-1675](#) [52746-1671-TR250](#) [10051922-2810EHLF](#) [6-520415-9](#)
[BD021-09A-A1-0350-0200-0550-LD](#) [SFV6R-1STE9HLF](#) [XF3M-2915-1B-R100](#) [1658549-1](#) [62674-221121ALF](#) [46214008010800](#)
[046298003000883](#) [151660622](#) [842-816-2630-035](#) [AYF530665TA](#) [AYF351525](#) [046296011930846+](#) [AYF352325A](#) [046254020000800+](#)
[FH19C-13S-0.5SH\(99\)](#) [FH39J-51S-0.3SHW\(99\)](#) [AYF355125A](#) [AYF530365TA](#) [FH29B-44S-0.2SHW\(99\)](#) [SFW5R-2STAE9LF](#) [AYF351125A](#)
[AYF350725A](#) [62684-502100AHLF](#) [FH39-61S-0.3SHW\(99\)](#) [AYF414035A](#) [10064555-172520HLF](#) [AYF212335A](#) [504754-2500](#)