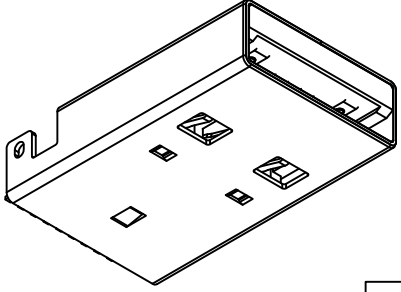


Designed to comply with physical, electrical and environmental requirements of full size USB Standard Compliance (USB3.0).



Specifications 规格:

Materials 材料:
 Plastic Housing 塑胶外壳: LCP, UL94V-0, Blue 黑色
 Contact Terminal 接触端子: Copper Alloy 铜合金
 Metallic Shell 金属外壳: SPCC

Finish 表面处理:
 Underplating 底层电镀: Nickel
 Plating 电镀:

Contact Area 接触面积: 30µ" Gold
 Solder Tails 焊接末端: 100µ" min. Tin

Metallic Shell 金属外壳: Nickel

Electrical 电气规格:

Voltage Rating 电压额定值: 100 V AC
 Current Rating 电流额定值:
 0.25A (Signal Pins 信号引脚 2,3,5,6,7,8,9)
 1.8A (Power Pins 电源引脚 1,4)

Operating Temperature 工作温度: -55°C to +85°C
 Contact Resistance 接触电阻值: 30 mΩ max.

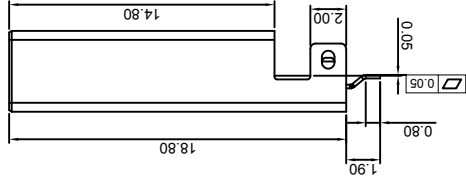
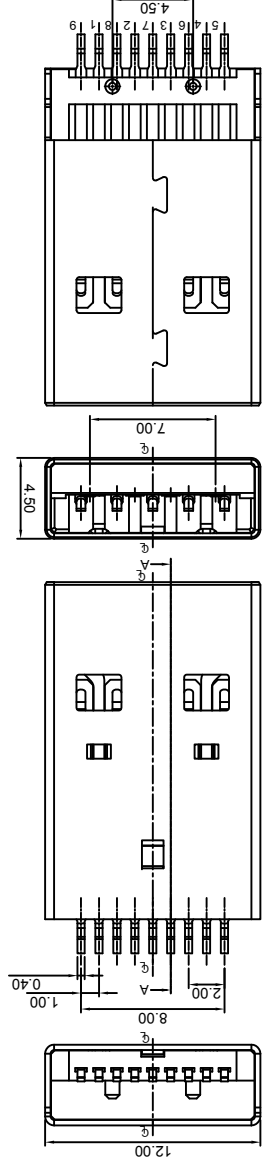
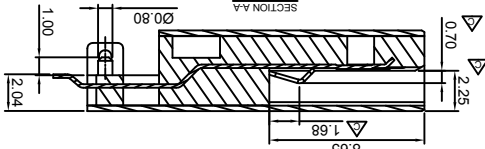
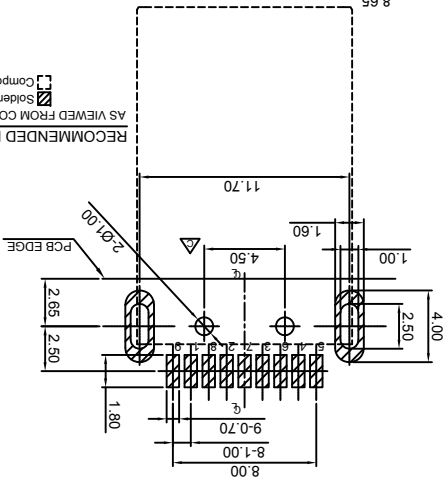
Insulating Resistance 绝缘电阻值: 1000 MΩ min.
 Dielectric Withstand Voltage 耐电压: 100V AC/minute

Mechanical 机械性能规格:

Mating Force 插入力: 35N max.

Unmating Force 拔出力: 10N min. initial, 8N min. after test
 Durability 耐久性: 5000

RECOMMENDED P.C.B LAYOUT
 AS VIEWED FROM COMPONENT SIDE
 Solder Area
 Component Outline



Looking for pure SMT-without plastic peg?
 Contact GCT and ask for SP-120803-001

Ordering Grid
 USB1065-30
 Contact Plating 30 = 30µ" Gold
 A = Tape & Reel
 REQUEST SAMPLES AND QUOTATION
 Packing Options
 B (900 per Reel)



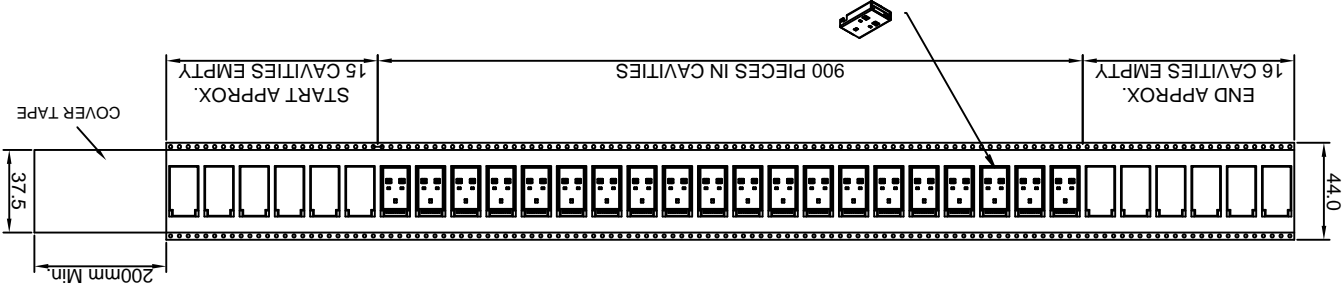
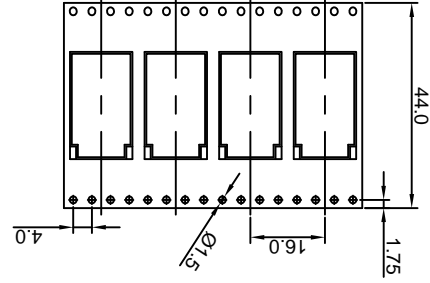
Tolerances (Except as noted)	Part Number:- USB1065	Date:- 09 MAY 11
Dimensions in mm	Description:- USB 3.0 Plug, Type A, SMT, Horizontal, 9 Pin, Top Mount, with Plastic Locating Pegs & Outer Shell Stakes	

Third Angle Projection
 COPIED OR DISCLOSED WITHOUT WRITTEN CONSENT

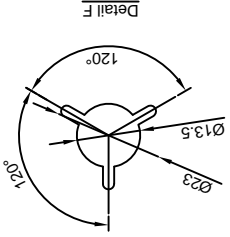
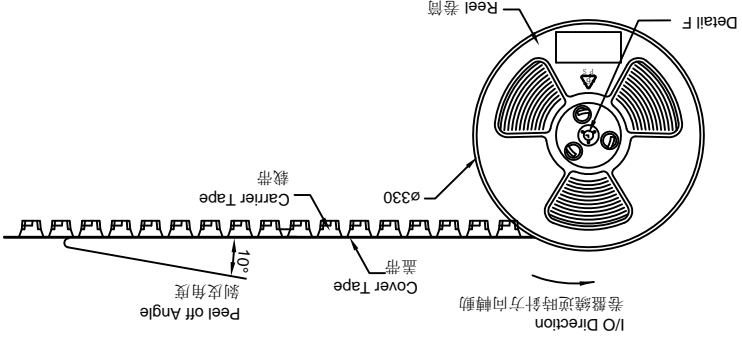
By	ASE	ASE	ASE	ASE	ASE	ASE
Release	ASE	ASE	ASE	ASE	ASE	ASE
Drawing Amended	ASE	ASE	ASE	ASE	ASE	ASE
PCN:	USB1065-001	USB1065-002	USB1065-002	USB1065-002	USB1065-002	USB1065-002
Additional Dimensions	ASE	ASE	ASE	ASE	ASE	ASE
DATE	09/05/11	20/02/12	16/07/12	02/05/13	09/12/13	09/12/13
REV	A	B	C	D	E	E
DETAIL	Drawing	Packing	Additional	PCN:	PCN:	PCN:



Sheet No.	1/2
E & OE	8
Drawn by	ASE
Material	See Note
Revision	E
Scale	NTS
NTS	7



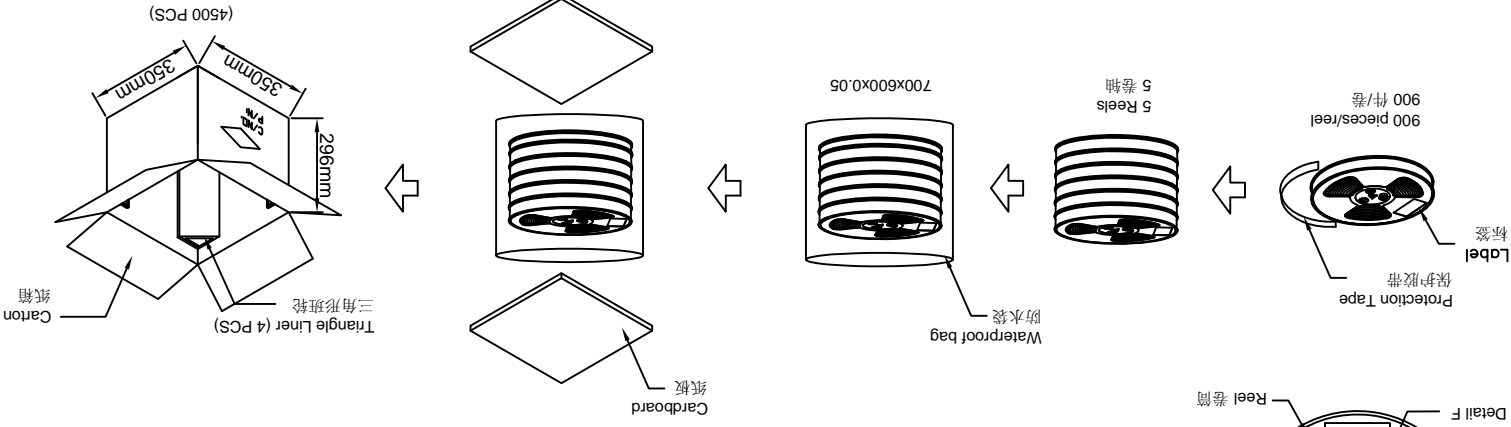
I/O Direction
卷盤繞逆時針方向轉動



Products P/N	PCS/Reel	Reels/Cartron	PCS/Cartron
USB1065-30-A	900	5	4500

Notes注意:

1. Peeling off force of top tape: 0.1-1.3N
2. Part Conforms to EIA-481-C Standards 产品符合EIA-481-C标准
3. All dimensions in millimeters 所有尺寸均是毫米



REV	DATE	By	DETAIL
A	09/05/11	ASE	Drawing Release
B	20/02/12	ASE	Packing Amended
C	16/07/12	ASE	Additional Dimensions
D	02/05/13	ASE	PCN: USB1065-001
E	09/12/13	ASE	PCN: USB1065-002



Tolerances	Part Number:-	Date:-
(Except as noted)	USB1065	09 MAY 11

Dimensions in mm	Description:-
X X ± 0.4	X X° ± 2°
X X X ± 0.25	X X X° ± 1°
X X X X ± 0.05	X X X X° ± 0.5°

THIS DRAWING IS CONFIDENTIAL AND MUST NOT BE COPIED OR DISCLOSED WITHOUT WRITTEN CONSENT

USB 3.0 Plug, Type A, SMT, Horizontal, 9 Pin, Top Mount, with Plastic Locating Pegs & Outer Shell Stakes

GCT
www.gct.co

Revision	Material	See Note	Drawn by	E & OE	Sheet No.
E			ASE		2/2

8

8

X-ON Electronics

Largest Supplier of Electrical and Electronic Components

Click to view similar products for [gct manufacturer](#):

Other Similar products are found below :

[BG302-03-A-L-G](#) [BD021-09A-A1-0350-0200-0550-LD](#) [BG095-10-A-N-D](#) [BG165-04-A-A-N-H](#) [BC070-06-A-1-L-D](#) [BG120-10-A-0-N-D](#)
[SIM7050-8-0-00-A](#) [BF020-03-A-B-0600-0300-N-G](#) [DCJ250-15-A-K1-C](#) [BG030-06-A-0450-0300-N-G](#) [DCJ065-05-A-K1-A](#) [USB4085-GF-A](#)
[BC085-08-A-0390-L-D](#) [BC034-10-A-V-0150-L-D](#) [BG300-06-A-L-A](#) [BG301-02-A-0540-L-B](#) [BG095-07-A-N-D](#) [BG040-06-A-0450-0300-N-](#)
[G](#) [BG030-04-A-0450-0300-N-G](#) [USB3105-30-A](#) [BD020-10-A-J-0350-0300-L-G](#) [BG303-04-A-0300-L-G](#) [DCJ235-05-A-K1-K](#) [BG301-05-A-](#)
[0540-L-B](#) [BC050-06A-K0-0200-0160-0480-LG](#) [MEM2075-00-140-01-A](#) [USB4055-30-A](#) [BG055-04A-1-0450-0530-0350-L-G](#) [BC050-10A-](#)
[K0-0200-0160-0480-LD](#) [BC070-20-A-1-L-D](#) [MEM2067-02-180-00-A](#) [BG120-04-A-0-N-D](#) [BC085-06-A-0390-L-D](#) [BC050-08A-K0-0200-](#)
[0160-0480-LG](#) [BC050-14A-K0-0200-0160-0480-LD](#) [DCJ250-10-A-K1-K](#) [BG302-05-A-L-G](#) [USB4065-30-A](#) [USB1035-GF-P-0-B-B](#) [BF085-](#)
[02-A-0240-N-G](#) [BG050-10A-0-0450-0737-0350-L-D](#) [BG302-04-A-L-G](#) [BG055-03A-1-0650-0530-0350-L-G](#) [BC075-08-A-L-D](#) [BC032-06-A-](#)
[2-0200-0200-L-D](#) [BF020-02-A-B-0400-0300-N-G](#) [BD020-03-A-J-0350-0300-L-G](#) [BC050-12A-K0-0200-0160-0480-LD](#) [USB3160-30-0170-1-](#)
[C](#) [BC020-06-A-0200-0300-L-D](#)