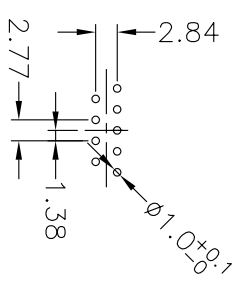
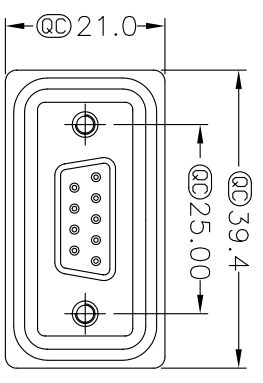
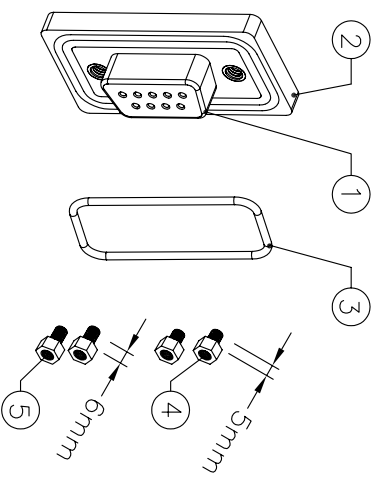
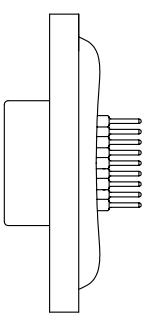
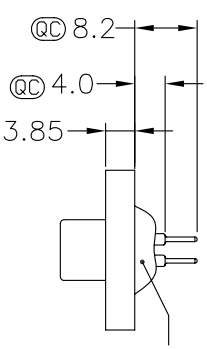


REV.	ECH. NO.	DATE	SIGN	DESCRIPTION

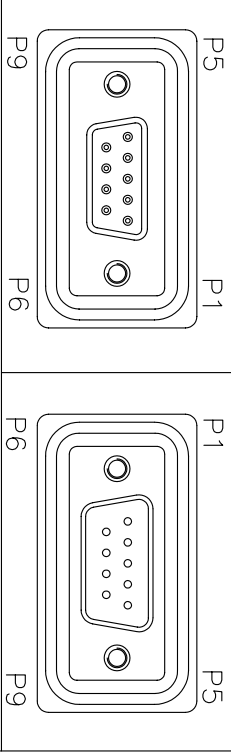


9Pin Connector PCB Pin Layout



**Warning! Drawings & Specifications Are Subject To Change Without Notification**

LTW/SDB-09PFFP-SL7001	LTW/SDB-09PMMP-SL7001
LTW/SDB-09PFFP-SL8001	LTW/SDB-09PMMP-SL8001



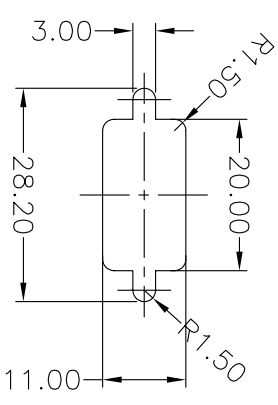
Pin Assignments Front View

- Note:
1. Materials
- ① Connector : D-SUB 9Pin, Pin: Brass,Gold Flash
  - ② Plastic Jacket : Nylon+Glass Filled
  - ③ Ring : Silicone
  - ④⑤ Screw : Brass,Nickel Plated
2. Ⓞ Important Dimension.

Panel Thickness

Screw L=5.0 For Panel Thickness Under 1.2mm

Screw L=6.0 For Panel Thickness Between 1.2~2.0mm



Recommended Panel Cut-Out

UNIT : mm	TITLE	SCALE	SIZE	SHEET	REV.
TOLERANCE	D-SUB For Panel Mount, 9Pin, PCB Type 180°	1:1	A4	1 of 1	A
ANGLES					

亮泰企業股份有限公司

ITEM NO	DWG NO	CUSTOMER
	LTW/SDB-09PXXP-SLX001	

DRAWN BY	DATE	CHECKED BY	DATE
Ju Xiao Fang	2004/07/15		
APPROVED BY	DATE		

## X-ON Electronics

Largest Supplier of Electrical and Electronic Components

*Click to view similar products for [amphenol manufacturer](#):*

Other Similar products are found below :

[CTV06RGQF-17-52P](#) [CTVPS00RGF-23-6P-LC](#) [JTPQ00RT-16-35P\(453\)](#) [GC835TY2S](#) [CF-509621-29P](#) [BF8-1218-31SV-Y70](#) [TVP00RGW-23-6SA\(LC\)](#) [RNJ27CI1535P014](#) [10-553998-139](#) [21-033388-031](#) [10-507142-843](#) [GTS02R20-15P-025-116](#) [GTS06G-32-7S](#) [GTC06-36-78PX-023](#) [ACC02E28-51S-003-B30-LC](#) [TV06RL-13-35SD-LC](#) [TV06RL-13-35SD](#) [TV06RL-13-98SD-LC](#) [TV06RL-13-98SD](#) [GTC08AF32-15SX-B30-LC](#) [GTC06G32-76PZ](#) [TVP00RW-23-53AD](#) [100-007-213-002-001](#) [5M30-61](#) [JT07RT-22-14PB-453](#) [FSPP-103-00-004](#) [360031](#) [10-037090-161](#) [10-541504-001](#) [10-580902-409](#) [TV97RW-9-9S\(S15\)](#) [TVPS00RGF-9-5P-LC](#) [TVPS00RGF-9-5PA-LC](#) [TVP00RGQW-21-75P-LC](#) [TV06RW-25-90AE](#) [97-3108B16S-5PW-417](#) [PT06J20-24SW](#) [97-3108B16S-4PY-417](#) [97-3108B16S-4PX-417](#) [97-3108B16S-5PY-417](#) [97-3108B16S-4PW-417](#) [CS-DSDMDB37MF-025](#) [97-3108B16S-5PZ-417](#) [TV06RW-25-46AE](#) [TVS07RF-21-16AA](#) [TVS07RF-21-39BA](#) [60261626SNCOND1](#) [SE00TVW09](#) [GTS01-22-22PX-025-116](#) [GTS01-22-22P-025-116](#)