

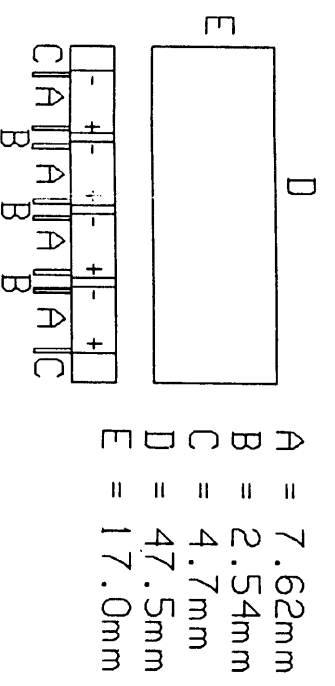
254 162 To 254 198

DATA SHEET
FBL 01 A/B

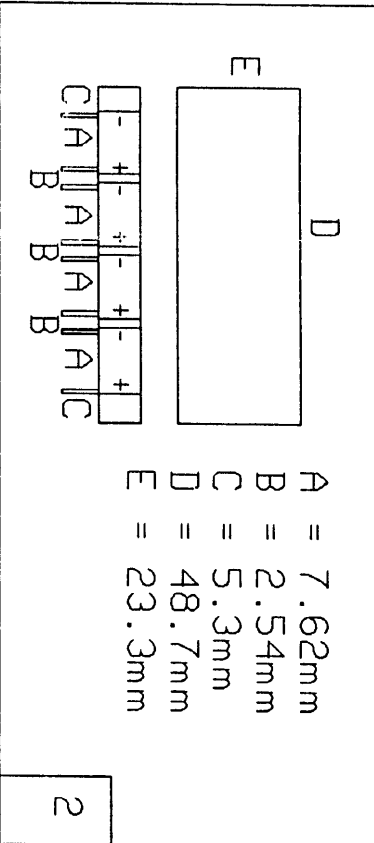
LED TECHNOLOGY LTD BACKLIGHT ASSEMBLY

MAX RATINGS @ 25deg C	TECHNICAL SPECIFICATION			OPERATING TEMPERATURE FOR COMPLETE ASSEMBLY
PARAMETER PER EMITTER	RED	GREEN	UNIT	-20deg C to +55deg C
REVERSE VOLTAGE V_r	6	10	V	STORAGE TEMPERATURE FOR COMPLETE ASSEMBLY
AVERAGE FORWARD CURRENT I_f	25	25	ma	-20deg C to +60deg C
PEAK FORWARD CURRENT $I_{p, SEC PULSE, 0.3\% DUTY CYCLE}$	I_{fsm} 1000	1000	ma	SOLDERING TEMPERATURE + 260deg C MAXIMUM
POWER DISSIPATION P_t	100	85	mw	SOLDERING TIME 5 SEC MAXIMUM
DERATE LINEARLY FROM 30deg C	0.45	0.45	mv/deg C	
ELECTRICAL/OPTICAL CHARACTERISTICS (T _a =25deg C: I _f =20ma				
FORWARD VOLTAGE V_f TYPICAL	3.4	4.2	V	CLEANING AGENT ONLY USE ALCOHOL BASED SUBSTANCE SUCH AS ISOPROPANOL
V_f MAXIMUM	4	6	V	
REVERSE CURRENT I_r	100 @ $V_r = 6v$	100 @ $V_r = 10v$	μA	
PEAK WAVELENGTH	655	567	nm	AVOID BENDING OR PREFORMING OF LED LEGS TO REDUCE STRAIN ON LED LEAD FRAME
SPECTRAL LINE HALFWIDTH	45	50	nm	

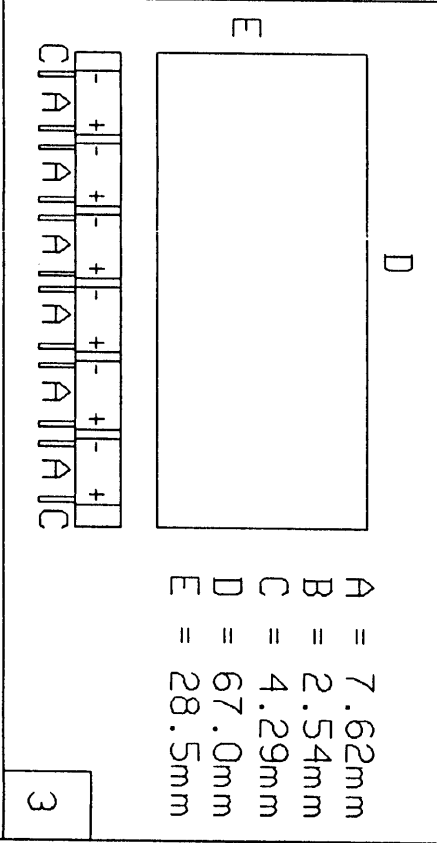
ITEM	COLOUR	PART NUMBER	F.E.C. CODE
1	GREEN	LTR 24 S36 04 YG	254-162
2	GREEN RED	LTR 24 S38 04 YG LTR 74 S38 04 R	254-174 254-186
3	GREEN	LTR 24 S37 06 YG	254-198



A = 7.62mm
 B = 2.54mm
 C = 4.7mm
 D = 47.5mm
 E = 17.0mm



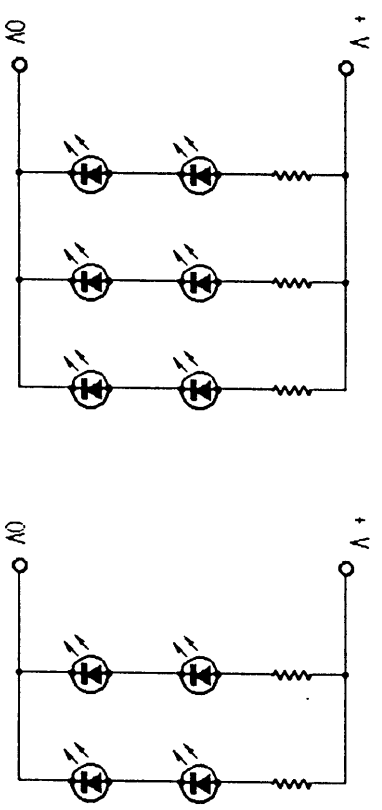
A = 7.62mm
 B = 2.54mm
 C = 5.3mm
 D = 48.7mm
 E = 23.3mm



A = 7.62mm
 B = 2.54mm
 C = 4.29mm
 D = 67.0mm
 E = 28.5mm

CIRCUIT DIAGRAMS

6 LED TYPE 4 LED TYPE



NOTE :
 DIMENSIONS "D & E "
 TOLERANCES +/- 0.3mm
 PANEL THICKNESS 3.0mm +/- 0.3mm

X-ON Electronics

Largest Supplier of Electrical and Electronic Components

Click to view similar products for [led technology manufacturer](#):

Other Similar products are found below :

[L02R5000Q1](#) [LTR24S3706YG](#) [BRURS3804TE](#) [FDC003](#) [LTR74S3804R](#) [L02R3000F1](#) [LT1802-24](#) [L08R5000Q1](#) [L03R5000Q1](#)
[L4RR5000E1](#)