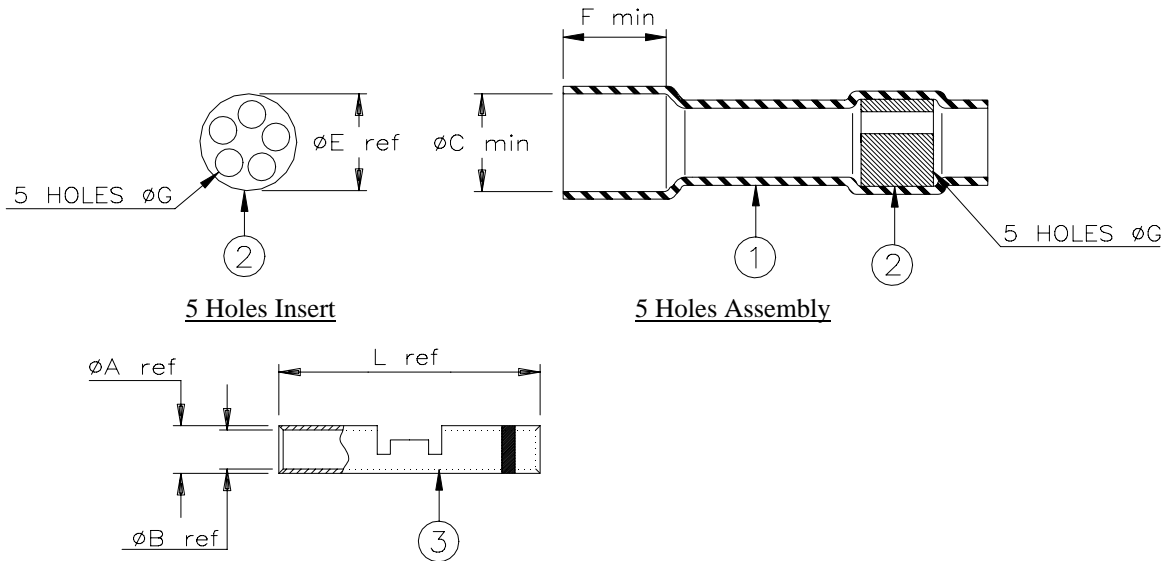


SPECIFICATION CONTROL DRAWING



Product Revision		Product Dimensions								
Product Name	Crimp Splice	L ref	A ref	B ref	CMA Range	Stripe Color	ϕC min	ϕG min	E ref	F min
D-436-0148	A D-609-06	12.7 (0.500)	1.95 (0.077)	1.20 (0.047)	300-1510	Red	7.60 (0.300)	2.00 (0.078)	7.50 (0.295)	8.90 (0.350)
D-436-0149	A D-609-07	14.6 (0.575)	2.65 (0.104)	1.65 (0.066)	779-2880	Blue				
D-436-0150	A D-609-08	14.6 (0.575)	3.80 (0.150)	2.55 (0.100)	1900-6755	Yellow				

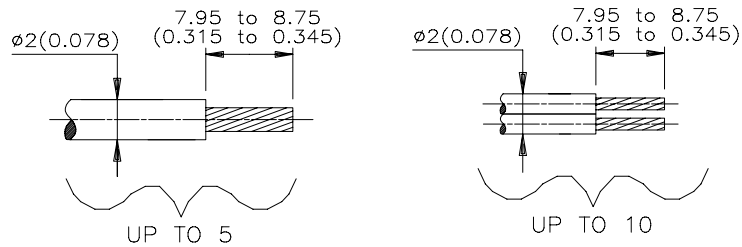
MATERIALS

1. INSULATION SLEEVE: Heat-shrinkable, transparent blue, radiation cross-linked modified polyvinylidene fluoride.
2. MELTABLE RINGS: Thermally stabilized thermoplastic. Color: natural.
3. CRIMP BARREL: Tin plated copper alloy. Color: see table.

APPLICATION

1. These controlled sealing systems are designed to make an immersion resistant multi-wire in-line splices made with wires having tin or silverplated conductors and insulations rated for at least +125°C.
2. Parts may be used to splice up to 5 wires having an insulation less than $\phi 2$ (0.078) or up to 10 wires (2 per hole) with insulation less than $\phi 1$ (0.039).
3. Temperature range: -55°C to +150°C.
4. For assembly instruction, see Raychem Installation Procedure RPIP-826-00.

For best results, prepare the cable as shown:



* A trademark of Raychem Corporation.

Raychem		THERMOFIT DEVICES		Raychem Corporation 300 Constitution Drive Menlo Park, CA 94025 USA		TITLE: IN-LINE CRIMP SPLICE DEVICE IMMERSION RESISTANT					
UNLESS OTHERWISE SPECIFIED DIMENSIONS ARE IN MILLIMETERS. INCHES DIMENSIONS ARE BETWEEN BRACKETS.						DOCUMENT NO.: D-436-0148/-0150					
TOLERANCES: 0.00 N/A 0.0 N/A 0 N/A		ANGLES: N/A		Raychem reserves the right to amend this drawing at any time. Users should evaluate the suitability of the product for their application.		DCR NUMBER: D981042		REPLACES: D436014X			
		ROUGHNESS IN MICRON				DRAWN BY: M. FORONDA		DATE: 06/23/98		PROD. REV. SEE TABLE	
				DOC ISSUE: 3		SCALE: None		SIZE: A		SHEET: 1 of 1	

If this document is printed it becomes uncontrolled. Check for the latest revision

X-ON Electronics

Largest Supplier of Electrical and Electronic Components

Click to view similar products for [Solder & Shield Tubing category](#):

Click to view products by [TE Connectivity manufacturer](#):

Other Similar products are found below :

[CTA-0027](#) [CTC-0062-20-9/5-9](#) [CTC-0062-22-9/5-9](#) [650076N001](#) [680441-000](#) [D-150-0331CS2902](#) [D-181-1222-90/9CS2800](#) [D-300-01CS1108](#) [982127-1](#) [D-436-0127CS391](#) [D-436-0182CS246](#) [D-436-37CS2651](#) [D-436-58CS246](#) [D-436-61CS246](#) [D-436-82-CS2621](#) [D-659-0087](#) [D-750-0005CS2493](#) [E53797N001](#) [S200-2-01](#) [S200-4-00CS2904](#) [LSS-81-16AA-CS5575](#) [SO63-2-9036-22CS2677](#) [SO63-3-01CS293](#) [SO63-3-9036-20CS2677](#) [SO63-3-9036-22CS2677](#) [SO63-4-9036-20CS2677](#) [SO63-5-9036-22CS2677](#) [CC1525-000](#) [CTA-0025](#) [CTA-0025CS072](#) [D-108-01CS227](#) [D-108-07CS436](#) [D-128-0010](#) [D-141-0108CS404](#) [D-142-51-202-7754](#) [D-144-41CS1371](#) [D-150-0231-NRCS2896](#) [B-801-18-01](#) [B-801-58](#) [515-9](#) [C67137-000](#) [D-436-36CS2908](#) [D-436-37CS2908](#) [D-436-52CS246](#) [D-436-83CS2705](#) [D-438-0102](#) [LSS-26-8A](#) [427243-000](#) [D-106-2012](#) [D-300-08CS1108](#)