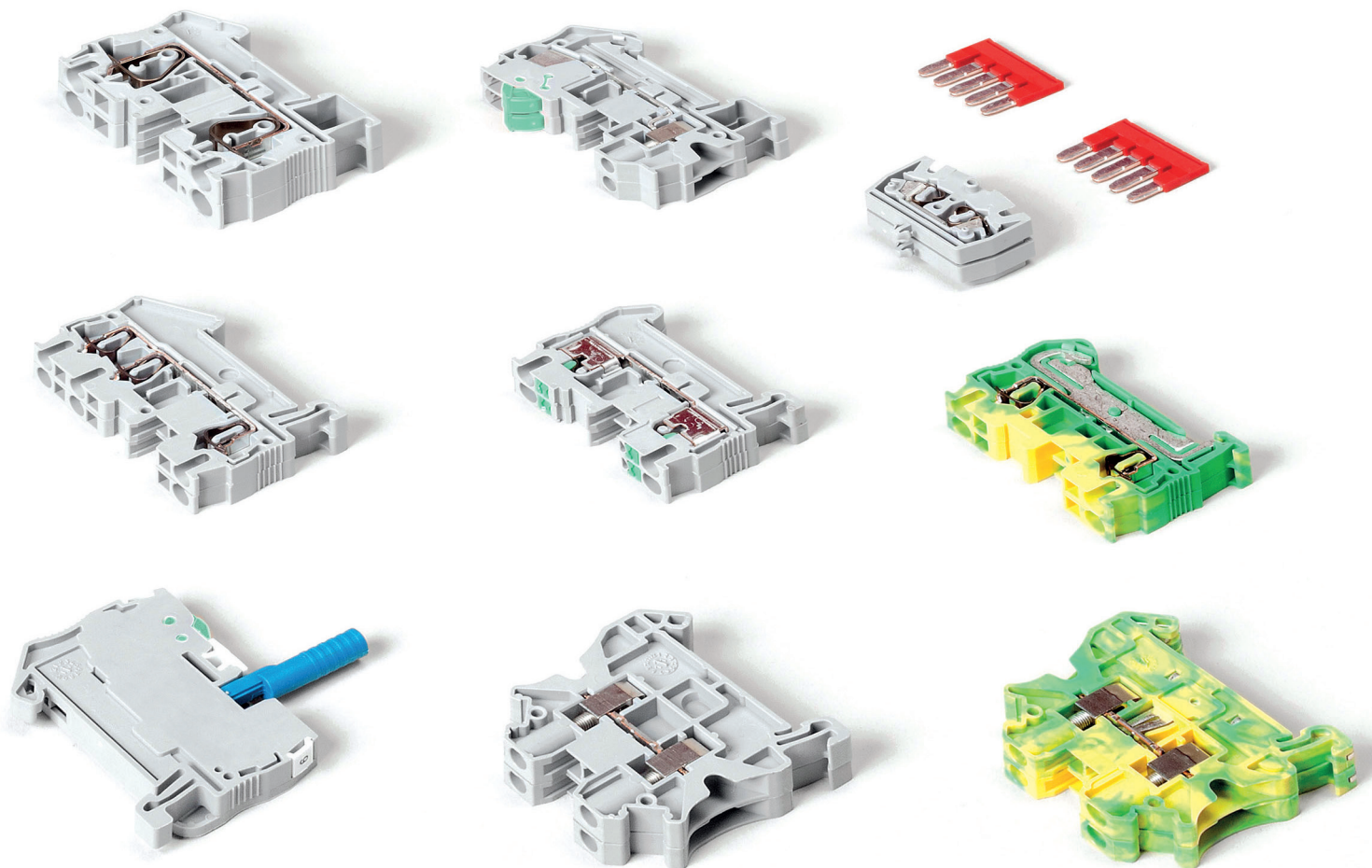


The expert's choice for reliability and simplicity

Lineryg TR terminal blocks

Push-in type, spring type and screw type help streamline all your electrical installations



Linery Connection Systems Terminal Blocks

Linery™ connection systems offer three terminal block technologies. The new push-in terminal blocks use the most cost-effective connection technique in the market. This technique drastically reduces wiring time and eliminates the need for regular re-tightening. Spring technology is a type of connection that requires limited maintenance and helps ensure the separation of mechanical and electrical functions. Screw technology terminal blocks are components which are well-known and widely used throughout the world and are suitable for the vast majority of connection applications.

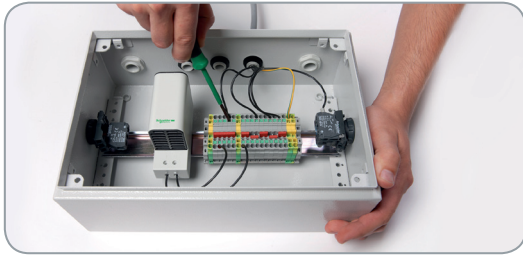
Linery TR terminal blocks selection table



Type of terminal block	Cross section area	Color	Connection technology				
			Screw tech	Spring tech	Push-in tech	Miniature screw for 15mm DIN rail	Miniature spring for 15mm DIN rail
Passthrough	2,5 mm² (2 pts)	Grey	NSYTRV22	NSYTRR22	NSYTRP22	NSYTRV22M	NSYTRR22M
		Blue	NSYTRV22BL	NSYTRR22BL	NSYTRP22BL	NSYTRV22MBL	NSYTRR22MBL
		Orange	NSYTRV22AR	NSYTRR22AR	NSYTRP22AR	-	-
	2,5 mm² (3 pts)	Grey	-	NSYTRR23	NSYTRP23	Available in July 2013	-
		Blue	-	NSYTRR23BL	NSYTRP23BL		-
		Orange	-	NSYTRR23AR	NSYTRP23AR		-
	2,5 mm² (4 pts, 1 level)	Grey	-	NSYTRR24	NSYTRP24	-	NSYTRR24M
		Blue	-	NSYTRR24BL	NSYTRP24BL	-	NSYTRR24MBL
	2,5 mm² (4 pts, 2 levels)	Grey	NSYTRV24D	NSYTRR24D	NSYTRP24D	-	-
		Blue	NSYTRV24DBL	NSYTRR24DBL	NSYTRP24DBL	-	-
	4 mm² (2 pts)	Grey	NSYTRV42	NSYTRR42	NSYTRP42	NSYTRV42M	-
		Blue	NSYTRV42BL	NSYTRR42BL	NSYTRP42BL	NSYTRV42MBL	-
		Orange	NSYTRV42AR	NSYTRR42AR	-	-	-
	4 mm² (3 pts)	Grey	NSYTRV43	NSYTRR43	NSYTRP43	-	-
		Blue	NSYTRV43BL	NSYTRR43BL	NSYTRP43BL	-	-
	4 mm² (4 pts, 1 level)	Grey	NSYTRV44	NSYTRR44	NSYTRP44	-	-
		Blue	NSYTRV44BL	NSYTRR44BL	NSYTRP44BL	-	-
	4 mm² (4 pts, 2 levels)	Grey	NSYTRV44D	NSYTRR44D	-	-	-
		Blue	NSYTRV44DBL	NSYTRR44DBL	-	-	-
	6 mm² (2 pts)	Grey	NSYTRV62	NSYTRR62	-	-	-
Blue		NSYTRV62BL	NSYTRR62BL	-	-	-	
10 mm² (2 pts)	Grey	NSYTRV102	NSYTRR102	-	-	-	
	Blue	NSYTRV102BL	NSYTRR102BL	-	-	-	
16 mm² (2 pts)	Grey	NSYTRV162	NSYTRR162	-	-	-	
	Blue	NSYTRV162BL	NSYTRR162BL	-	-	-	
150 mm² (2 pts)	Grey	NSYTRV1502BB	-	-	NSYTRV22MPE	NSYTRR22MPE	
Ground	2,5 mm² (2 pts)	Green	NSYTRV22PE	NSYTRR22PE	NSYTRP22PE	-	-
	2,5 mm² (3 pts)	Green	-	NSYTRR23PE	NSYTRP23PE	-	-
	2,5 mm² (4 pts)	Green	-	NSYTRR24PE	NSYTRP24PE	-	-
	4 mm² (2 pts)	Green	NSYTRV42PE	NSYTRR42PE	NSYTRP42PE	NSYTRV42MPE	-
	4 mm² (3 pts)	Green	NSYTRV43PE	NSYTRR43PE	NSYTRP43PE	-	-
	4 mm² (4 pts)	Green	NSYTRV44PE	NSYTRR44PE	NSYTRP44PE	-	-
	6 mm² (2 pts)	Green	NSYTRV62PE	NSYTRR62PE	-	-	-
	10 mm² (2 pts)	Green	NSYTRV102PE	NSYTRR102PE	-	-	-
16 mm² (2 pts)	Green	NSYTRV162PE	NSYTRR162PE	-	-	-	
Knife Disconnect	2,5 mm² (2 pts)	Grey	NSYTRV42ST ⁽¹⁾	NSYTRR22SC	NSYTRP22SC	-	-
		Orange	NSYTRV42STAR ⁽¹⁾	NSYTRR22SCAR	-	-	-
	2,5 mm² (3 pts)	Grey	-	NSYTRR23SC	NSYTRP23SC	-	-
		Orange	-	NSYTRR23SCAR	-	-	-
2,5 mm² (2 levels)	Grey	NSYTRV42SCD ⁽¹⁾	NSYTRR24SCD	-	-	-	
Fuse Disconnect	4 mm² (2 pts) 5 x 20 mm fuse	Black	NSYTRV42SF5	-	-	-	-
		Black (12 V)	NSYTRV42SF5LD ⁽²⁾	-	-	-	-
		Black (230 V)	NSYTRV42SF5LA ⁽²⁾	-	-	-	-
Basic Disconnect ⁽³⁾	4 mm² (2 pts)	Grey	NSYTRV42TB	NSYTRR22TB	NSYTRP42TB	-	-
Measuring transducer	6 mm² (2 pts) Disconnect	Grey/Orange	NSYTRV62TTD	-	-	-	-
	6 mm² (2 pts)	Grey	NSYTRV62TT	-	-	-	-
	6 mm² (2 pts)	Green	NSYTRV62TTPE	-	-	-	-

* Grey terminal with flange.

(1) 4 mm² terminal, with 2 test points. (2) With light indicator. (3) Carrier sold separately as an accessory.



Linery TR terminal blocks benefits include:

- > Fast and easy installation
- > Multiple connection options
- > International standards and RoHS compliance

Extensive connection and test accessories help ensure your installations are completed quickly, easily, and labelled clearly.

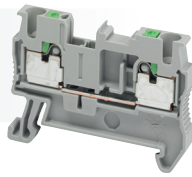


Connection technology		Accessories					Cable ends compatible with all technologies	
Miniature spring for direct mount	Miniature spring for direct mount	End plates for screw TBs	End plates for spring TBs	End plates for push-in TBs	Plug-in jumpers	Marking strips 10 characters	Wires Cross section area	Reference
NSYTRR22MF	NSYTRR22MP	NSYTRAC22	NSYTRACR22	NSYTRACR22	NSYTRAL22	NSYTRAB510	0,5 mm ²	DZ5CE005
NSYTRR22MFBL	NSYTRR22MPBL	NSYTRAC22BL	NSYTRACR22BL	NSYTRACR22BL	NSYTRAL23	NSYTRAB520		DZ5CA005
NSYTRR22MFF*	-	-	-	-	NSYTRAL24	NSYTRAB530		
-	-	-	NSYTRACR23	NSYTRACR23	NSYTRAL25	NSYTRAB540	0,75 mm ²	DZ5CE007
-	-	-	NSYTRACR23BL	NSYTRACR23BL	NSYTRAL210	NSYTRAB550		DZ5CA007
-	-	-	-	-	NSYTRAL210BL	...		
NSYTRR24M	NSYTRR24MP	-	NSYTRACR24	NSYTRACR24	NSYTRAL210GR	NSYTRAB590	1 mm ²	DZ5CE010
NSYTRR24MBL	NSYTRR24MPBL	-	NSYTRACR24BL	NSYTRACR24BL	NSYTRAL220	NSYTRAB5100		DZ5CA010
-	-	NSYTRAC24	NSYTRACRE24	NSYTRACRE24	-	NSYTRAB51100		
-	-	-	-	-	-	-	1,5 mm ²	DZ5CE015
-	-	NSYTRAC22	NSYTRACR42	NSYTRACR42	NSYTRAL42	NSYTRAB610		DZ5CA015
-	-	NSYTRAC22BL	-	-	NSYTRAL43	NSYTRAB620		
-	-	-	-	-	NSYTRAL44	NSYTRAB630	2,5 mm ²	DZ5CE025
-	-	NSYTRC23	NSYTRACR43	NSYTRACP43	NSYTRAL45	NSYTRAB640		DZ5CA025
-	-	-	-	-	NSYTRAL410	NSYTRAB650		
-	-	NSYTRAC24	NSYTRACR44	NSYTRACP44	NSYTRAL410BL	...	4 mm ²	DZ5CE042
-	-	-	-	-	NSYTRAL410GR	NSYTRAB690		DZ5CA042
-	-	NSYTRAC24	NSYTRACRE44	-	NSYTRAL420	NSYTRAB6100		
-	-	-	-	-	-	NSYTRAB61100	6 mm ²	DZ5CE062
-	-	NSYTRAC22	NSYTRACR62	-	NSYTRAL62	NSYTRAB810		DZ5CA062
-	-	NSYTRAC22BL	-	-	NSYTRAL610	NSYTRAB820		
-	-	NSYTRAC22	NSYTRACR102	-	NSYTRAL102	NSYTRAB1010	10 mm ²	DZ5CA102
-	-	NSYTRAC22BL	-	-	-	NSYTRAB1020		
-	-	NSYTRAC162	NSYTRACR162	-	NSYTRAL162	NSYTRAB1010	16 mm ²	DZ5CA162
-	-	-	-	-	-	NSYTRAB1020		
-	-	NSYTRAC952	-	-	NSYTRAL1502	-		
-	-	NSYTRAC22	NSYTRACR22	NSYTRACR22	-	-	35 mm ²	DZ5CA352
-	-	-	NSYTRACR23	NSYTRACR23	-	-		
-	-	-	NSYTRACR24	NSYTRACR24	-	-		
-	-	NSYTRAC22	NSYTRACR42	NSYTRACR42	-	-		
-	-	NSYTRAC23	NSYTRACR43	NSYTRACP43	-	-		
-	-	NSYTRAC24	NSYTRACR44	NSYTRACP44	-	-		
-	-	NSYTRAC22	NSYTRACR62	-	-	-		
-	-	NSYTRAC22	NSYTRACR102	-	-	-		
-	-	NSYTRA C162	NSYTRACR162	-	-	-		
-	-	Included	NSYTRACR23	NSYTRACPK22	-	-		
-	-	Included	-	-	-	-		
-	-	-	NSYTRACR24	NSYTRACPK23	-	-		
-	-	-	-	-	-	-		
-	-	NSYTRAC24	Included	-	-	-		
-	-	Included	-	-	-	-		
-	-	Included	-	-	-	-		
-	-	Included	-	-	-	-		
-	-	Included	NSYTRACR23	NSYTRACR42	-	-		
-	-	NSYTRACT22	-	-	-	-		
-	-	NSYTRACT22	-	-	-	-		
-	-	NSYTRACT22	-	-	-	-		

Three types of Linergy TR terminal blocks are available to suit your needs:

1

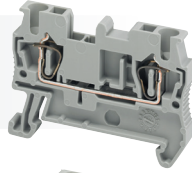
Push-in type*
quick and innovative



***50%**
faster installation

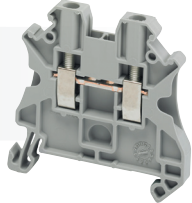
2

Spring type
fast and easy



3

Screw type
widest range of applications



Markets served:

Critical power	Lift	Industry
Wind farm	Tools	Food & Beverage
Marine	Material Handling	Packaging
HVAC	Hoisting	Rail
Machines	Textile	Water

We also offer:

NEMA TYPE Terminal Blocks – Class 9080 TYPE G
Power Distribution Blocks – Class 9080 Type LB
Fuse Holders – Class 9080 Type FB



Universal Enclosures

- Steel wall mounting enclosures
- Steel floor standing enclosures
- Stainless steel enclosures
- Insulating polyester enclosures
- Industrial Boxes



Thermal Management System

- Ventilation Systems
- Insulated Resistance Heaters
- Thermal Control
- ProClima Software for thermal calculation



> For more information on the Linergy TR terminal blocks:
www.schneider-electric.us

Make the most of your energySM

Schneider Electric USA, Inc.
8001 Knightdale Blvd.
Knightdale, NC 27545 USA
1-888-Square D
1-888-778-2733
www.schneider-electric.us

X-ON Electronics

Largest Supplier of Electrical and Electronic Components

Click to view similar products for [schneider](#) manufacturer:

Other Similar products are found below :

[LU9M1](#) [7D](#) [7S](#) [7XA1](#) [FNQR2](#) [8501RS44V24](#) [8501RSD14P14V51](#) [8501XO20V03Y414](#) [9001KXRK](#) [9001SKR9P35RH25](#) [9001SKT35L31](#)
[9003K2C003GA](#) [9007AA1](#) [9007BA1](#) [9007C54D](#) [9007C62A2](#) [9007CA11](#) [9007FA3](#) [9007HA4](#) [9007HA6](#) [9007KA1](#) [9007KB11](#)
[9007MS01S0206](#) [9007MS02S0300](#) [9012GAR4](#) [9012GAW2](#) [9012GBW1](#) [9012GDW5E3](#) [9012GFW1](#) [9012GNG1](#) [9012GNG3](#) [9012GNG6](#)
[9013FHG39J69](#) [9013GHG2J30](#) [9050JCK2F30V14](#) [GV2ME04](#) [GV2ME10](#) [GV2ME14](#) [GV2ME20](#) [GV2ME32](#) [GV2P06](#) [GV2P08](#) [GV2P10](#)
[GV2P16](#) [GV2P20](#) [GV2P21](#) [GV2RT07](#) [GV2RT21](#) [GVAD1001](#) [GVAN11](#)