

19" CABINETS

Accessories

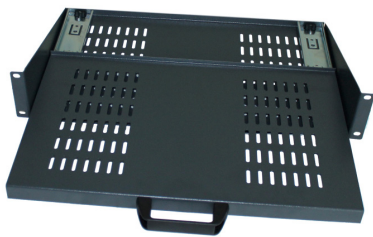
Cantilever Tray



- Manufactured in steel, 1.5mm thick.
- 19" assembly with four anchoring points on the front sections
- Recommended maximum static load: 10/20 Kg
- Standard ventilation slots
- Front fastening height 2U
- One tray with mounting hardware
- Standard depths 180, 280, 350, 400mm
- Grey graphite epoxy paint, anthracite - RAL 7016
- 1 tray (screws not included)

TYPE NO.	U	DEPTH
CAX2TY180	2U	180mm
CAX2TY280	2U	280mm
CAX2TY350	2U	350mm
CAX2TY400	2U	400mm

Cantilever Telescopic Tray



- Ideal for holding keyboards
- Manufactured in steel, 1.5mm thick
- 19" assembly with four anchoring points on the front sections
- Recommended maximum static load- 10kg
- Standard ventilation slots
- Front fastening height 2U
- Standard depths 280mm
- Finish: Black epoxy paint
- Telescopic guide rails nickel plated
- 1 Tray, 1 pair telescopic guides, 1 front handle

TYPE NO.	U	DEPTH
CAXCTT280	2U	280mm

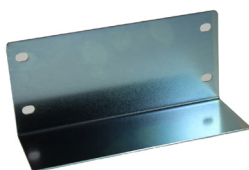
Side Mount Tray



- Manufactured in steel, 1.5mm thick.
- Easy assembly is attached to the rack at four anchoring points with M6 bolts
- Attachment points adaptable to variations in the depth of the 19" sections
- Recommended maximum static load: 60 Kg
- Standard ventilation slots
- Colour epoxy paint, anthracite - RAL 7016
- One tray with mounting hardware

TYPE NO.	WIDTH	DEPTH	RACK
CAXSMT350	424mm	350mm	600 Deep
CAXSMT550	424mm	550mm	800 Deep

Front Guides Mounting



- Attached to rack by two anchoring points with M6 bolts
- Made of steel, 2mm thick
- Zinc plated coating
- 1 Pair of guides and assembly hardware

TYPE NO.	DESCRIPTION
CAXFMG001	Front guide Mounting

19" CABINETS

Clip-on Support Guides



- Made of steel, 2mm thick
- Quick attachment to the rack, without bolts
- Zinc plated coated
- 1 pair of guides

TYPE NO.	DEPTH
CAXCSG345	345mm
CAXCSG545	545mm

Bolt-on Support Guides



- Made of steel, 2mm thick
- Height adjustable with standard position indicator
- Zinc plated coated
- 1 pair of guides and assembly hardware

TYPE NO.	DEPTH
CAXBBSG345	345mm
CAXBBSG545	545mm

Cable Guides Clamps



- Manufactured in steel
- Standard finish: Epoxy paint similar to RAL 9004
- Pack quantity x1

TYPE NO.	DESCRIPTION
CAX19CGC1	1U Guide
CAX19CGC2	2U Guide

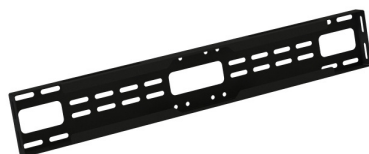
1U Cable Clamp Panel



- 19" panel for guiding and distributing wires
- Manufactured in steel 1.5mm thick
- Finish: Black epoxy paint similar to RAL 9004
- 1 Panel assembly hardware

TYPE NO.	U
CAX19CCP1	1

Multi Functional Cross Members



Attached to the lateral structure of rack, they can be used as a cable guide and provide additional anchoring points to the 19" sections.

- Manufactured using 1mm thick steel
- Epoxy paint, graphite grey
- 1 pair and hardware mounting

TYPE NO.	DEPTH
CAXMFM600	600mm
CAXMFM800	800mm

UNIVERSAL ENCLOSURES

HAND HELD CASES

HEAVY DUTY ENCLOSURES

DIN RAIL BOXES

INTERFACE SUPPORTS

CONTROL STATIONS

DIECAST & METAL BOXES

DESKTOP & INSTRUMENT CASES

POTTING BOXES

19" ENCLOSURES

19" CABINETS

DEVELOPMENT BOARD ENCLOSURES

CUSTOM SIZED ENCLOSURES

CUSTOM SERVICES



+44 (0)1638 716101
info@camdenboss.com
www.camdenboss.com

We operate a constant improvement policy, our products are subject to change without notice.

Ver 1.0 Iss 1

CAMDENBOSS
ELECTRONICS & ENCLOSURES

19" CABINETS

Vertical Wiring Distributor

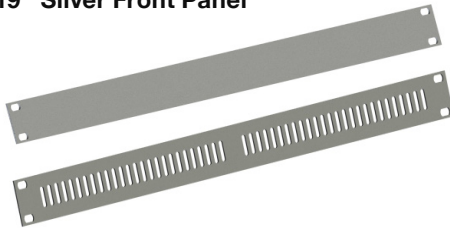


Ideal for the vertical distribution of wiring in the 800mm wide racks. Built-in clamps and integrated outlets for high density of wiring. Possibility to assembly extra clamps at the back side.

TYPE NO.	DEPTH
CAXVWD42U	42U

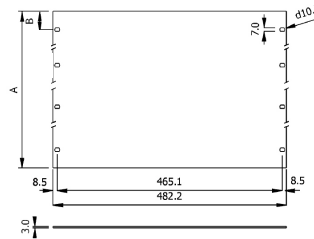
- Manufactured in 2mm thick steel
- Epoxy paint, graphite grey
- 1 pair of vertical distributors and assembly hardware

19" Silver Front Panel

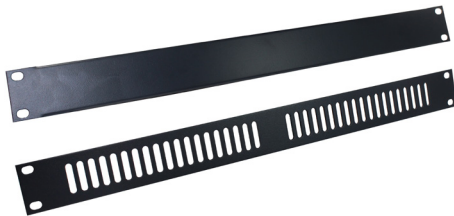


- Manufactured in aluminium, 3mm thick, clear anodised
- Vented and solid profiles

STANDARD FRONT	VENTED FRONT	U	HEIGHT	B
CAX19SPS1	CAX19VPS1	1U	43.6mm	5.9mm
CAX19SPS2	CAX19VPS2	2U	88.1mm	5.9mm
CAX19SPS3	CAX19VPS3	3U	132.5mm	37.7mm
CAX19SPS4	CAX19VPS4	4U	177.0mm	37.7mm
CAX19SPS5	CAX19VPS5	5U	221.5mm	37.7mm
CAX19SPS6	CAX19VPS6	6U	265.9mm	37.7mm
CAX19SPS9	CAX19VPS9	9U	399.2mm	37.7mm



19" Panel Anthracite



- Manufactured in steel (RAL 7016)

STANDARD FRONT	VENTED FRONT	U	HEIGHT (MM)
CAX19SPA1	CAX19VPA1	1U	43.6mm
CAX19SPA2	CAX19VPA2	2U	88.1mm
CAX19SPA3	CAX19VPA3	3U	132.5mm
CAX19SPA4	CAX19VPA4	4U	177.0mm
CAX19SPA5	CAX19VPA5	5U	221.5mm
CAX19SPA6	CAX19VPA6	6U	265.9mm
CAX19SPA9	CAX19VPA9	9U	399.2mm

UNIVERSAL ENCLOSURES

HAND HELD CASES

HEAVY DUTY ENCLOSURES

DIN RAIL BOXES

INTERFACE SUPPORTS

CONTROL STATIONS

DIECAST & METAL BOXES

DESKTOP & INSTRUMENT CASES

POTTING BOXES

19" ENCLOSURES

19" CABINETS

DEVELOPMENT BOARD ENCLOSURES

CUSTOM SIZED ENCLOSURES

CUSTOM SERVICES

19" CABINETS

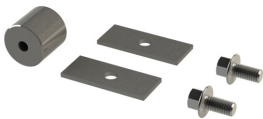
Attachment Set



- Nickel-plated M6 x 15mm locking bolt with combi slotted/pozi head, PA washer, M6 caged nut with stainless-steel cage
- Pack of 4

TYPE NO.	DESCRIPTION
CAX000001	Attachment set

Baying Kit



- Fast, effective side-assembly system for attaching two or more racks
- Standard packaging: 8 threaded screws and 4 intermediate sleeves

TYPE NO.	DESCRIPTION
CAX000002	Baying Kit

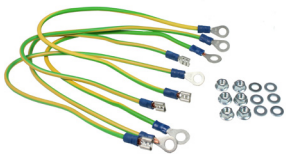
LX Wheel Kit



- Set of 4 double rotating wheels with rubber rolling band or polyamide
- Bracket made of stamped steel, with double roll of balls
- Maximum dynamic load acceptable per set: 2400N/240 Kg)

TYPE NO.	DESCRIPTION
CLX000001	LX Wheel Kit

CamRack LX Earthing Kit



Series of 6 ground lines with straight/ring faston terminals at the ends. Allows all movable parts of rack to be earthed. Made of 2mm copper cable (3.5 insulator)

- Cable length 200/400 mm
- 6 ground wires and assembly hardware

TYPE NO.	DESCRIPTION
CAXEARTH1	6 ground wires and assembly hardware

UNIVERSAL ENCLOSURES

HAND HELD CASES

HEAVY DUTY ENCLOSURES

DIN RAIL BOXES

INTERFACE SUPPORTS

CONTROL STATIONS

DIECAST & METAL BOXES

DESKTOP & INSTRUMENT CASES

POTTING BOXES

19" ENCLOSURES

19" CABINETS

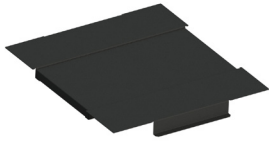
DEVELOPMENT BOARD ENCLOSURES

CUSTOM SIZED ENCLOSURES

CUSTOM SERVICES

19" CABINETS

Base Plate - Plain



Made of steel 1.5mm, its 3-part design allows for quick assembly.

- Made of steel 2mm thick
- Epoxy paint, graphite grey
- 1 pair of vertical distributors and assembly hardware

TYPE NO.	RACK WIDTH	RACK DEPTH
CAXBPPPL66	60mm	600mm
CAXBPPPL68	600mm	800mm
CAXBPPPL86	800mm	600mm
CAXBPPPL88	800mm	800mm

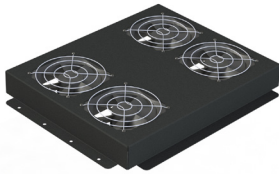
QX/WX Fan Tray



Fan tray with 2 fans. Suitable for use with the QX and WX rack.

TYPE NO.
CAXFT2FAN

LX Fan Tray



Fan tray with 4 or 6 fans.
Suitable for use with the LX 600 deep and 800 deep racks.

TYPE NO.	RACK DEPTH
CAXFT4FAN	600 Deep
CAXFT6FAN	800 Deep

UNIVERSAL ENCLOSURES

HAND HELD CASES

HEAVY DUTY ENCLOSURES

DIN RAIL BOXES

INTERFACE SUPPORTS

CONTROL STATIONS

DIECAST & METAL BOXES

DESKTOP & INSTRUMENT CASES

POTTING BOXES

19" ENCLOSURES

19" CABINETS

DEVELOPMENT BOARD ENCLOSURES

CUSTOM SIZED ENCLOSURES

CUSTOM SERVICES

X-ON Electronics

Largest Supplier of Electrical and Electronic Components

Click to view similar products for Camden manufacturer:

Other Similar products are found below :

[CCTTR30RD](#) [412689X](#) [CTBP92VE/12R](#) [CTBP9350/12](#) [IND515205-240-T/GRN](#) [IND515205-240-T/RD](#) [CDIC00002](#) [CCTTBES](#) [C192SHAND](#)
[RTM5006/16-PAT](#) [CAXCSG345](#) [CTB9350/12FL](#) [CTBP9308/6AO](#) [CTBP9358/11](#) [CTBP9208/8](#) [CIME/M/BE2250SS](#) [CHH64E1BL](#) [CHD774004](#)
[CHHBAT1BK](#) [CFTBN/2](#) [RTM5003/13-NAT](#) [CCB2S1/04](#) [CCM1S1/05](#) [CHDX7-224C](#) [CHDX8-221](#) [CHDX8-222](#) [CHDX810DD](#) [CHDX811DD](#)
[CHDX814DD](#) [CTB9300/2A](#) [CTBP92VD/5R](#) [CTBP92VJ/8R](#) [CTSN433/12/M](#) [CUABOX012](#) [CDIC00005](#) [CBRPH-BLK](#) [BIM2004/LUG-GY/GY](#)
[RTM108-BLK](#) [CNMB/4/KIT](#) [CTB5050/5](#) [CTBP9358/10AO](#) [CTBP93VE/9](#) [CHH66C2GY](#) [CIM/9W-DMFS](#) [RTM5006/16-NC-BLK](#) [IND5032405-](#)
[125-T/AMB](#) [CHTB4/3N](#) [CCD2S1/04](#) [CCA1P1/A04](#) [CCA2P1/A03](#)