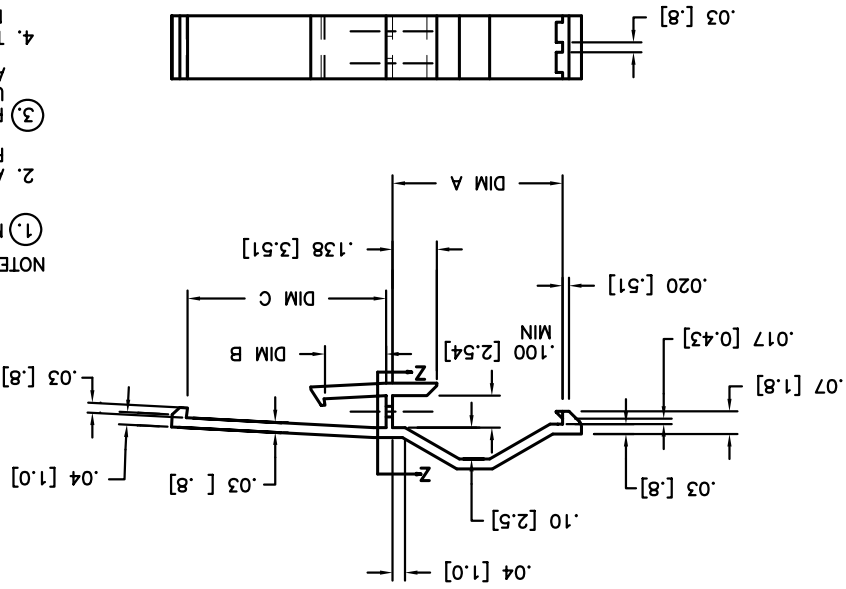


mat'l code	surface	tolerance	ASME Y14.5	projection	product family	BERGCON ACCESSORIES	title	LATCH FOR FLYING CONNECTION SINGLE ROW	dwg no	sheet 1 of 1 size	A4	type	Product Customer Drawing
ecn no	date	tolerances unless otherwise specified	ASME Y14.5	INCH/MM	product family	BERGCON ACCESSORIES	title	LATCH FOR FLYING CONNECTION SINGLE ROW	dwg no	sheet 1 of 1 size	A4	type	Product Customer Drawing
C	V40999	HTB	1994-06-08	angles	XXXX.005/XXXX.0								
D	V41244	HTB	1994-06-24	angles	XXXX.005/XXXX.0								
E	V41721	MSC	1994-12-08	0.7.2	XXXX.0020/XXXX.0051								
F	V50169	HTB	1995-01-20	dp	M.CLOUSER	1994-06-08							
G	V00492	RGD	2000-04-08	eng'r	T. HANNA	1994-06-08							
H	M06-0213	MHT	2006-06-05	chr	J.MURPHY	1994-06-08							
J	V06-1200	HTB	2006-12-08	appt	T. HANNA	1994-06-08							
sheet	revision	J	1	sheet	1								

- NOTES:
- MATERIAL: PBT, UNREINFORCED, FLAME RETARDANT PER UL94 V-0, COLOR: BLUE.
  - ALWAYS APPLY LATCH TO PIN CONNECTOR FIRST TO FACILITATE ASSEMBLY.
  - PART NUMBERS WITH AN LF SUFFIX MEET EUROPEAN UNION DIRECTIVES AND OTHER COUNTRY REGULATIONS AS DESCRIBED IN GS-22-008.
  - THIS PRODUCT IS NOT INTENDED TO BE EXPOSED TO MANUFACTURING SOLDERING PROCESSES.



PRODUCT NUMBER	DIM A	DIM B	DIM C	APPLICATION	NOTES
78242-001	.53/13.5	.191/4.85	.62/15.7	MINI LATCH TO CLINCHER	
78242-001LF	.53/13.5	.191/4.85	.62/15.7	MINI LATCH TO CLINCHER	NOTE 3
78242-002	.53/13.5	.157/4.00	.55/14.0	MINI LATCH RECEPTACLE TO MINI LATCH PIN	
78242-002LF	.53/13.5	.157/4.00	.55/14.0	MINI LATCH RECEPTACLE TO MINI LATCH PIN	NOTE 3
78242-003	.59/14.9	.191/4.85	.620/15.7	CLINCHER RECEPTACLE TO CLINCHER PIN	
78242-003LF	.59/14.9	.191/4.85	.620/15.7	CLINCHER RECEPTACLE TO CLINCHER PIN	NOTE 3



## X-ON Electronics

Largest Supplier of Electrical and Electronic Components

*Click to view similar products for [Headers & Wire Housings](#) category:*

*Click to view products by [FCT Electronics](#) manufacturer:*

Other Similar products are found below :

[95000-104TRLF](#) [10135584-644402LF](#) [DF62W-EP2022PCA](#) [95000-106TRLF](#) [DF62W-2022SCA](#) [DF62W-EP2022PC](#) [2203348](#) [DF62W-2022SC](#) [1084018](#) [1029039](#) [1084017](#) [802-10-012-10-002000](#) [1112640](#) [1112639](#) [891-007-9SS-BST1T](#) [000-34000](#) [0008550134](#) [0009482033](#) [0009507031](#) [57102-F02-18ULF](#) [57102-S06-03LF](#) [57202-S52-04LF](#) [PCN6-15S-2.5E](#) [0039019024](#) [58102-G61-06LF](#) [582553-1](#) [0009485154](#) [0009508121](#) [009176003701906](#) [0022285053](#) [0050291907](#) [018731A](#) [LY20-4P-DT1-P1E-BR](#) [02.125.8002.8](#) [60101931](#) [60598-1 \(Cut Strip\)](#) [M1625-3R/100](#) [61062-3](#) [61082-181009](#) [CSU011177004](#) [636-1427](#) [638009-1](#) [641938-9](#) [641991-4](#) [644168-1](#) [644827-2](#) [647662-1](#) [65039-019ELF](#) [65692-001LF](#) [65781-018](#)