

NOTES:

- MATERIAL : HOUSING - LCP, GLASS FILLED, UL 94V-0  
COLOUR : BLACK.  
LATCH - NYLON, GLASS FILLED, UL 94V-0  
COLOUR : SEE TABLE ON SHEET 6.  
TERMINAL : COPPER ALLOY.
- FINISHES - SEE TABLE ON SHEET 6.
- PRODUCT SPECIFICATION : RPS-78507-001
- PACKAGING SPECIFICATION: PRODUCT SHALL BE PACKED IN TRAY, SEE SHEET 5
- CARD SLOT ACCEPTS 1.27±0.10MM MODULE THICKNESS (MEASURED FROM P.C. PADS).
- MOLEX LOGO, DATE & PART NO. INDICATED ON HOUSING.
- MODULE SEATING PLANE FROM TOP OF PCB.
- KEEP OUT ZONE RESERVED FOR LATCH.
- KEEP OUT AREA IS THE AREA WHERE THE CONNECTOR (INCLUDED LATCHES IN OPENING POSITION) IS MOUNTED ON THE PCB.
- KEEP OUT ZONE AS PER JEDEC SO-014.

AMD. JEDEC STD. NO.	EC NO. S2011-0743	DRWN:CCIEH 2011/02/25	CHKD:CGTAN 2011/04/19	APPR:SHLENI 2011/04/19
REV	DESCRIPTION			
2				

QUALITY SYMBOLS
$\nabla_F = 0$
$\nabla_E = 0$
$\nabla_P = 0$

GENERAL TOLERANCES (UNLESS SPECIFIED)	
	mm INCH
4 PLACES	± --- ± ---
3 PLACES	± --- ± ---
2 PLACES	± 0.20 ± ---
1 PLACE	± --- ± ---
ANGULAR ± 3 °	
DRAFT WHERE APPLICABLE MUST REMAIN WITHIN DIMENSIONS	

DIMENSION STYLE	
MM ONLY	
DRAWN BY	DATE
JAKEEMEW	2009/04/22
CHECKED BY	DATE
CCTEH	2009/05/27
APPROVED BY	DATE
SHLENI	2009/05/27
MATERIAL NO.	
SEE TABLE	
SIZE	
A3	

SCALE	DESIGN UNITS	THIRD ANGLE PROJECTION
NTS	METRIC	
TITLE		
DDR3 DIMM, 1.00 PITCH 240CKTS, LSP, STD LATCH SMT, VERTICAL, LOWLLCR		
MOLEX INCORPORATED		
MATERIAL NO.	DOCUMENT NO.	SHEET NO.
SEE TABLE	SD-78507-001	1 OF 6
THIS DRAWING CONTAINS INFORMATION THAT IS PROPRIETARY TO MOLEX INCORPORATED AND SHOULD NOT BE USED WITHOUT WRITTEN PERMISSION		

10 9 8 7 6 5 4 3 2 1

F

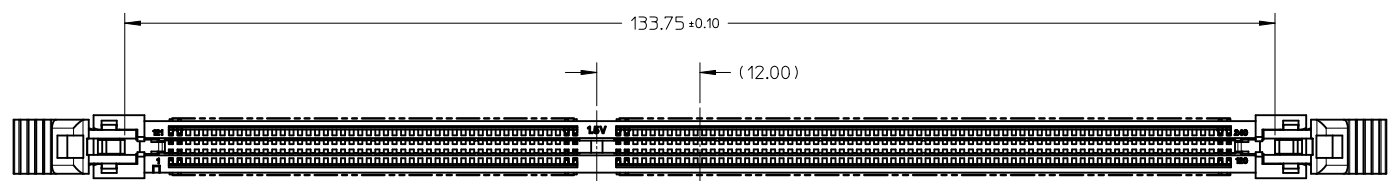
E

D

C

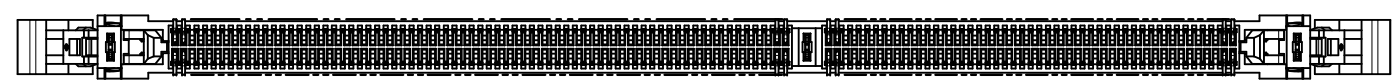
B

A

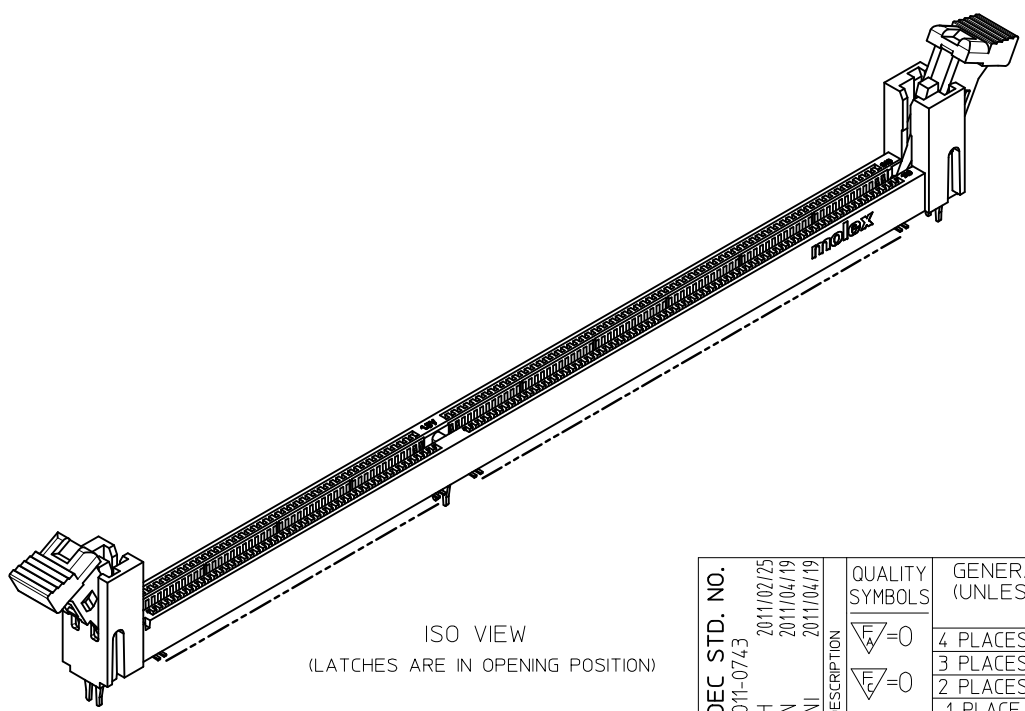


TOP VIEW  
(LATCHES ARE IN OPENING POSITION)

CENTER LINE OF 128.60 MIN FEATURE



BOTTOM VIEW  
(LATCHES ARE IN OPENING POSITION)

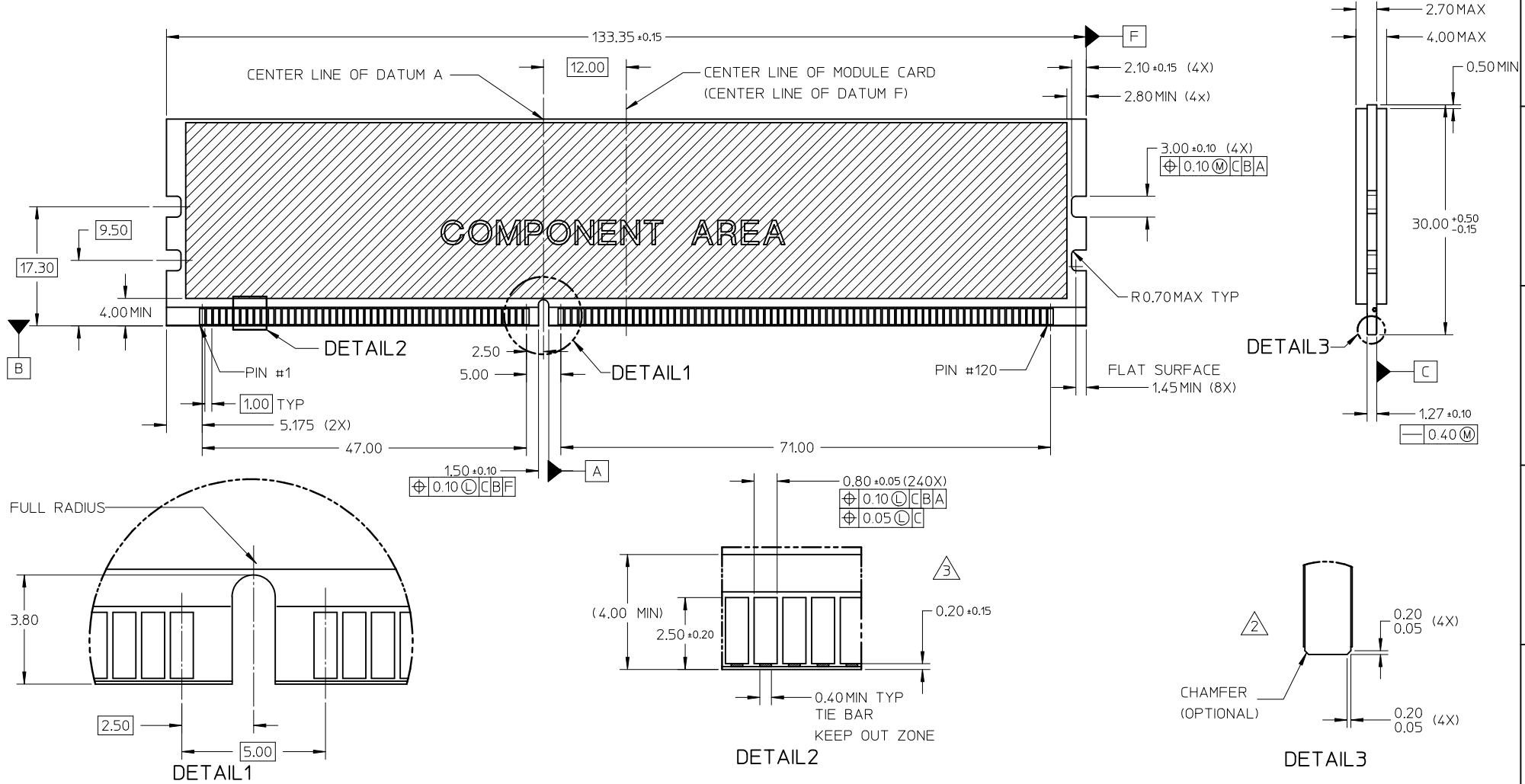


ISO VIEW  
(LATCHES ARE IN OPENING POSITION)

AMD, JEDEC STD. NO. EC NO: S2011-0743 DRAWN: CCTEH 2011/02/25 CHKD: CGTAN 2011/04/19 APPR: SHLENI 2011/04/19	QUALITY SYMBOLS ▽=0 ▽=0 ▽=0	GENERAL TOLERANCES (UNLESS SPECIFIED)		DIMENSION STYLE MM ONLY	SCALE NTS	DESIGN UNITS METRIC	THIRD ANGLE PROJECTION
			mm	INCH	DRAWN BY JAKEEMEW	DATE 2009/04/22	TITLE DDR3 DIMM, 1.00 PITCH 240CKTS, LSP, STD LATCH SMT, VERTICAL, LOWLLCR
REV 2	DESCRIPTION	4 PLACES	± ---	± ---	CHECKED BY CCTEH	DATE 2009/05/27	MOLEX INCORPORATED
		3 PLACES	± ---	± ---	APPROVED BY SHLENI	DATE 2009/05/27	
		2 PLACES	± 0.20	± ---	MATERIAL NO. DOCUMENT NO.		SHEET NO. 2 OF 6
		1 PLACE	± ---	± ---	SEE TABLE SD-78507-001		
		ANGULAR ± 3 °		DRAFT WHERE APPLICABLE MUST REMAIN WITHIN DIMENSIONS		THIS DRAWING CONTAINS INFORMATION THAT IS PROPRIETARY TO MOLEX INCORPORATED AND SHOULD NOT BE USED WITHOUT WRITTEN PERMISSION	

10 9 8 7 6 5 4 3 2 1

MODULE CARD  
 DDR3 DUAL IN-LINE MEMORY MODULE FAMILY 1.00MM CONTACT CENTERS  
 (JEDEC MO-269, ISSUE B, APRIL/06)

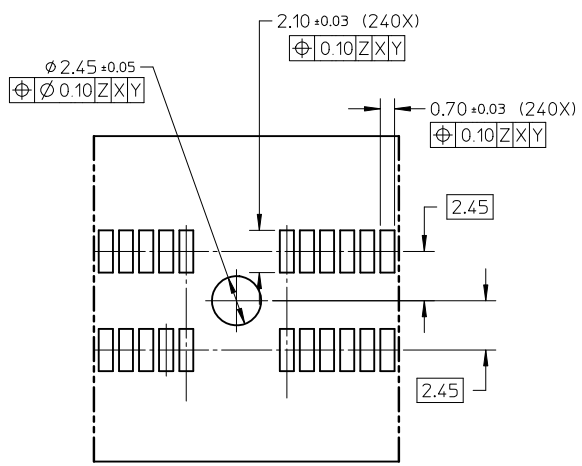
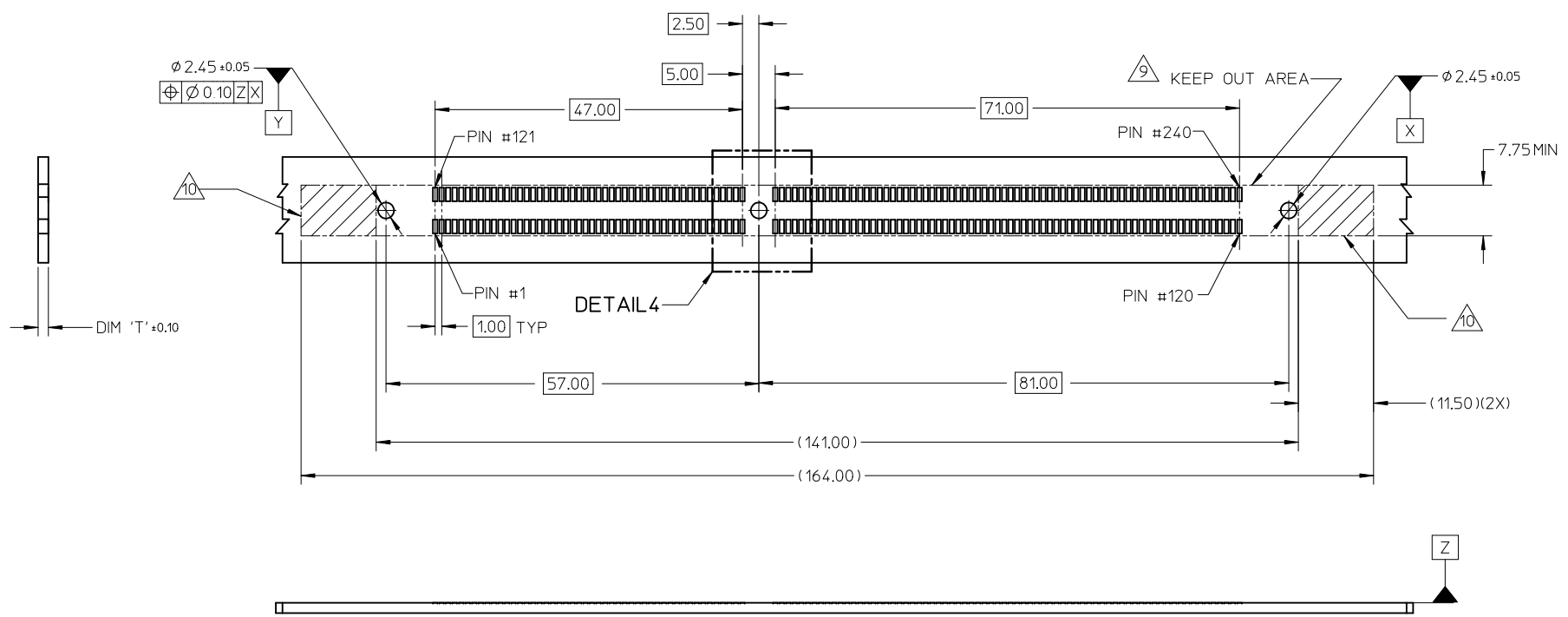


- NOTES:
- RECOMMENDED PLATING FOR CONTACT PADS:  
 PREFERRED: 0.76 MICROMETERS GOLD PLATING MIN OVER 2.00 MICROMETERS NICKEL.  
 ALTERNATIVE: 0.05-0.75 MICROMETERS GOLD PLATING OVER 2.00 MICROMETERS NICKEL MUST USE AN ELECTRONIC CONTACT GRADE CORROSIVE BARRIER LUBRICANT.
  - CHAMFER IS OPTIONAL AND IS NOT TO HIT THE GOLD PADS.
  - LEADING EDGE OF GOLD PADS SPECIFIED BY KEEPOUT ZONE SHALL BE FREE OF BURRS AND EXTERNAL TIE BARS.

AMD, JEDEC STD. NO. EC NO: S2011-0743 DRW:CCTEH 2011/02/25 CHKD:CGTAN 2011/04/19 APPR:SHLENI 2011/04/19	QUALITY SYMBOLS F <sub>A</sub> =0 F <sub>G</sub> =0 F <sub>P</sub> =0	GENERAL TOLERANCES (UNLESS SPECIFIED)		DIMENSION STYLE MM ONLY		SCALE NTS	DESIGN UNITS METRIC	THIRD ANGLE PROJECTION		
		mm	INCH	DRAWN BY JAKEEMEW	DATE 2009/04/22	TITLE DDR3 DIMM, 1.00 PITCH 240CKTS, LSP, STD LATCH SMT, VERTICAL, LOWLLCR				
		4 PLACES ± ---	± ---	CHECKED BY CCTEH	DATE 2009/05/27	MOLEX INCORPORATED				
		3 PLACES ± ---	± ---	APPROVED BY SHLENI	DATE 2009/05/27	DOCUMENT NO. SD-78507-001				
2 PLACES ± 0.20	± ---	ANGULAR ± 3 °		MATERIAL NO. SEE TABLE		SHEET NO. 3 OF 6				
1 PLACE ± ---	± ---	DRAFT WHERE APPLICABLE MUST REMAIN WITHIN DIMENSIONS		SIZE A3		THIS DRAWING CONTAINS INFORMATION THAT IS PROPRIETARY TO MOLEX INCORPORATED AND SHOULD NOT BE USED WITHOUT WRITTEN PERMISSION				

9 8 7 6 5 4 3 2 1

10 9 8 7 6 5 4 3 2 1



DETAIL4

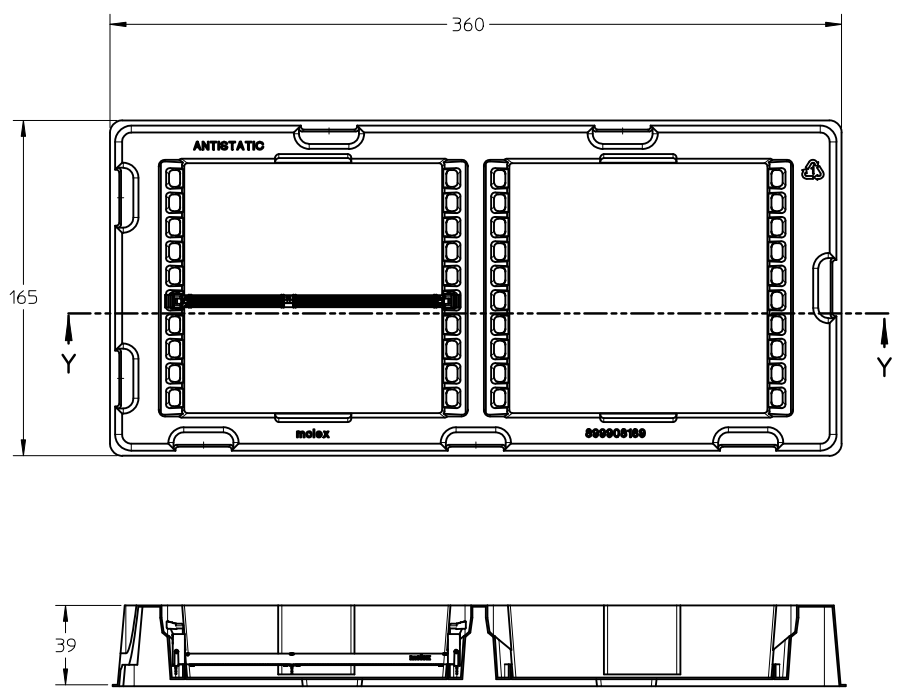
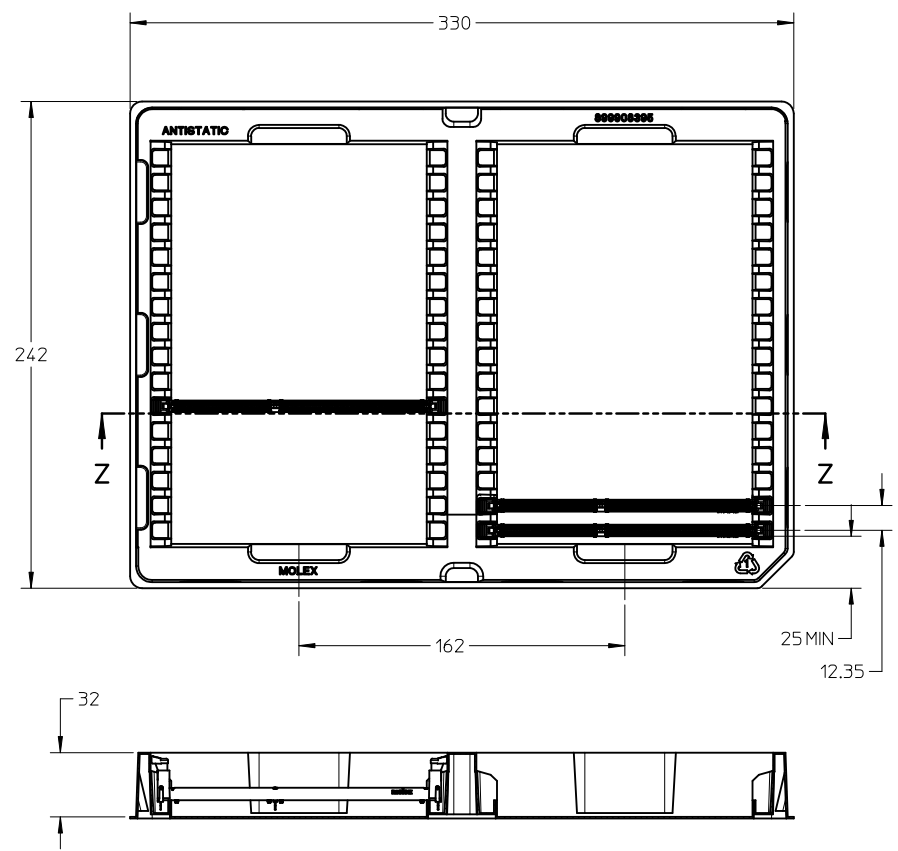
RECOMMENDED PCB THICKNESS = 1.57mm ~ 3.18mm  
 RECOMMENDED STENCIL THICKNESS = 150 MICROMETERS

AMD, JEDEC STD. NO. EC NO: S2011-0743 DRWN: CCTEH 2011/02/25 CH'KD: CGTAN 2011/04/19 APPR: SHLENI 2011/04/19 REV 2	QUALITY SYMBOLS $\nabla F = 0$ $\nabla E = 0$ $\nabla A = 0$	GENERAL TOLERANCES (UNLESS SPECIFIED) <table border="1"> <thead> <tr> <th></th> <th>mm</th> <th>INCH</th> </tr> </thead> <tbody> <tr> <td>4 PLACES</td> <td>± ---</td> <td>± ---</td> </tr> <tr> <td>3 PLACES</td> <td>± ---</td> <td>± ---</td> </tr> <tr> <td>2 PLACES</td> <td>± 0.20</td> <td>± ---</td> </tr> <tr> <td>1 PLACE</td> <td>± ---</td> <td>± ---</td> </tr> </tbody> </table> ANGULAR ± 3°		mm	INCH	4 PLACES	± ---	± ---	3 PLACES	± ---	± ---	2 PLACES	± 0.20	± ---	1 PLACE	± ---	± ---	DIMENSION STYLE MM ONLY	SCALE NTS	DESIGN UNITS METRIC	THIRD ANGLE PROJECTION
		mm	INCH																		
	4 PLACES	± ---	± ---																		
	3 PLACES	± ---	± ---																		
2 PLACES	± 0.20	± ---																			
1 PLACE	± ---	± ---																			
DRAWN BY JAKEEMEW	DATE 2009/04/22	TITLE DDR3 DIMM, 1.00 PITCH 240CKTS, LSP, STD LATCH SMT, VERTICAL, LOWLLCR		MOLEX INCORPORATED																	
CHECKED BY CCTEH	DATE 2009/05/27	APPROVED BY SHLENI		DATE 2009/05/27	MATERIAL NO. SEE TABLE	DOCUMENT NO. SD-78507-001															
DRAFT WHERE APPLICABLE MUST REMAIN WITHIN DIMENSIONS		SIZE A3	THIS DRAWING CONTAINS INFORMATION THAT IS PROPRIETARY TO MOLEX INCORPORATED AND SHOULD NOT BE USED WITHOUT WRITTEN PERMISSION																		

9 8 7 6 5 4 3 2 1

10 9 8 7 6 5 4 3 2 1

VIEW FOR PACKAGING TRAY



SECTION Y-Y

SECTION Z-Z

TRAY A - NO. OF CAVITY = 2 X 16 = 32PCS

AMD. JEDEC STD. NO. EC NO: S2011-0743 DRW:CCTEH CHKD:CGTAN APPR:SHLENI	REV 2	DESCRIPTION 2011/02/25 2011/04/19 2011/04/19	QUALITY SYMBOLS $F_{\Delta} = 0$ $F_{\square} = 0$ $F_{\nabla} = 0$	GENERAL TOLERANCES (UNLESS SPECIFIED)		DIMENSION STYLE <b>MM ONLY</b>	SCALE NTS	DESIGN UNITS METRIC	THIRD ANGLE PROJECTION
				mm	INCH	BROWN - NO. OF CAVITY TRAY B - NO. OF CAVITY	TITLE X 10 = 20PCS		
DRAFT WHERE APPLICABLE MUST REMAIN WITHIN DIMENSIONS				4 PLACES	$\pm$ ---	$\pm$ ---	JAKEEMEW	2009/04/22	DDR3 DIMM, 1.00 PITCH 240CKTS, LSP, STD LATCH SMT, VERTICAL, LOWLLCR
				3 PLACES	$\pm$ ---	$\pm$ ---	CHECKED BY	DATE	
ANGULAR $\pm 3^{\circ}$				2 PLACES	$\pm 0.20$	$\pm$ ---	CCTEH	2009/05/27	SD-78507-001
				1 PLACE	$\pm$ ---	$\pm$ ---	APPROVED BY	DATE	
				MATERIAL NO.		DOCUMENT NO.			
				SEE TABLE					
				THIS DRAWING CONTAINS INFORMATION THAT IS PROPRIETARY TO MOLEX INCORPORATED AND SHOULD NOT BE USED WITHOUT WRITTEN PERMISSION					

9 8 7 6 5 4 3 2 1

PART NO.	VOLTAGE KEY POS.	DIM 'X'	PLATING OPTION	LATCH COLOR	TRAY TYPE	LUBRICATION
78507-0001	CENTER (1.5V)	3.94	0.76µM (30µNCH) MIN. GOLD ON CONTACT. 2.54µM (100µNCH) MIN. PURE TIN ON SOLDER TAIL. 1.27µM (50µNCH) MIN. NICKEL UNDERPLATE.	BLACK	B	YES
78507-0002					A	
78507-0003				B		
78507-0004				A		

<b>AMD, JEDEC STD. NO.</b> EC NO: S2011-0743 DRWN: CCTEH 2011/02/25 CHKD: CGTAN 2011/04/19 APPR: SHLENI 2011/04/19 REV 2	QUALITY SYMBOLS $\nabla_A = 0$ $\nabla_C = 0$ $\nabla_P = 0$	GENERAL TOLERANCES (UNLESS SPECIFIED) <table border="1"> <thead> <tr> <th></th> <th>mm</th> <th>INCH</th> </tr> </thead> <tbody> <tr> <td>4 PLACES</td> <td>± ---</td> <td>± ---</td> </tr> <tr> <td>3 PLACES</td> <td>± ---</td> <td>± ---</td> </tr> <tr> <td>2 PLACES</td> <td>± 0.20</td> <td>± ---</td> </tr> <tr> <td>1 PLACE</td> <td>± ---</td> <td>± ---</td> </tr> </tbody> </table>		mm	INCH	4 PLACES	± ---	± ---	3 PLACES	± ---	± ---	2 PLACES	± 0.20	± ---	1 PLACE	± ---	± ---	DIMENSION STYLE <b>MM ONLY</b>	SCALE <b>NTS</b>	DESIGN UNITS <b>METRIC</b>	THIRD ANGLE PROJECTION
		mm	INCH																		
	4 PLACES	± ---	± ---																		
	3 PLACES	± ---	± ---																		
2 PLACES	± 0.20	± ---																			
1 PLACE	± ---	± ---																			
DRAFT WHERE APPLICABLE MUST REMAIN WITHIN DIMENSIONS	DRAWN BY JAKEEMEW	DATE 2009/04/22	TITLE DDR3 DIMM, 1.00 PITCH 240CKTS, LSP, STD LATCH SMT, VERTICAL, LOWLLCR	MOLEX INCORPORATED																	
	APPROVED BY SHLENI	DATE 2009/05/27	MATERIAL NO. <b>SEE TABLE</b>	DOCUMENT NO. SD-78507-001	SHEET NO. 6 OF 6																
			SIZE <b>A3</b>	THIS DRAWING CONTAINS INFORMATION THAT IS PROPRIETARY TO MOLEX INCORPORATED AND SHOULD NOT BE USED WITHOUT WRITTEN PERMISSION																	

## X-ON Electronics

Largest Supplier of Electrical and Electronic Components

*Click to view similar products for [IC & Component Sockets](#) category:*

*Click to view products by [Molex](#) manufacturer:*

Other Similar products are found below :

[714-43-102-31-012000](#) [0066-3-17-15-30-14-02-0](#) [0134-0-15-15-32-27-04-0](#) [614-DG5](#) [6527-0-00-15-00-00-03-0](#) [670](#) [672](#) [673](#) [712-93-120-41-001000](#) [714-93-104-31-018000](#) [8059-4G1-LF](#) [807-22-001-10-001101](#) [807-22-001-10-003101](#) [807-22-001-10-004101](#) [807-22-001-10-006101](#) [807-22-001-30-011101](#) [807-22-001-30-012101](#) [807-22-001-30-013101](#) [807-22-001-30-014101](#) [8-1437531-4](#) [8150-6P10](#) [833-93-034-10-001000](#) [835-43-014-10-001000](#) [851-41-006-10-001000](#) [851-43-008-20-001000](#) [851-43-014-20-001000](#) [851-93-006-20-001000](#) [851-93-010-20-001000](#) [853-43-020-10-001000](#) [86.010.0053.0](#) [116-43-306-41-003000](#) [116-43-308-41-007000](#) [116-87-308-41-007101](#) [PX-68LCC](#) [PX-84LCC](#) [121-13-318-41-001000](#) [121-13-320-41-001000](#) [121-13-308-41-001000](#) [123-43-314-41-801000](#) [123-43-420-41-001000](#) [123-43-636-41-001000](#) [123-87-320-41-001101](#) [122-13-316-41-001000](#) [123-13-624-41-001000](#) [123-43-306-41-001000](#) [123-43-322-41-801000](#) [123-43-428-41-001000](#) [123-43-624-41-001000](#) [12-3513-11](#) [123-91-320-41-001000](#)