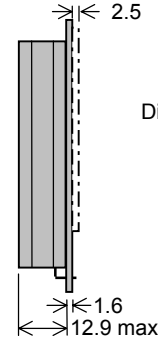
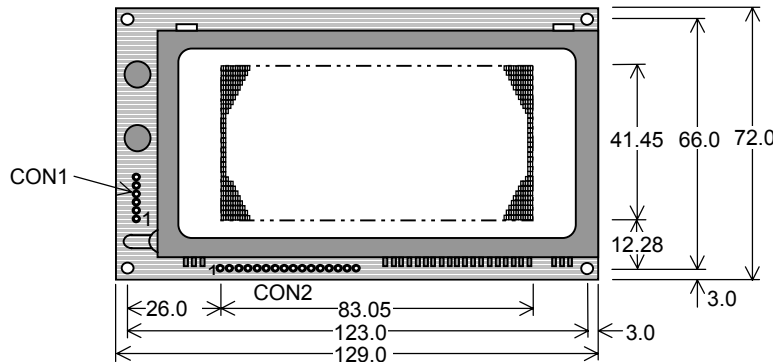


Dot Graphic VFD Module

GU126x64F-K612A4

- 126 x 64 High Brightness Dot Graphic Display
- Single 5V DC Supply
- 3 ASCII Fonts (5 x 5, 5 x 7, and 10 x 14)
- SPI & RS232 Asynchronous Serial Interface
- 8 User I/O Pins with Key Scanning Capability
- Transformerless PSU (patent pending)
- Low Profile Construction

The module includes the VFD glass, VF drivers and micro-controller with refresh RAM, character generation, interface logic and patented transformerless DC/DC converter. The RS232 serial interface is full duplex and accepts various baud rates up to 38,400. The module features a low profile design with numerous custom options available including special fonts and application specific commands.



Dimensions in mm & subject to tolerances.
Mounting holes 3.2mm dia.

ELECTRICAL SPECIFICATION

Parameter	Symbol	Value	Condition
Power Supply Voltage	V _{DD}	5.0VDC +/- 5%	GND=0V
Power Supply Current	I _{DD}	750 mA typ.	V _{DD} =5VDC
RS232 Input	V _{SIL} / V _{SIH}	-24V max / +24V max	V _{DD} =5VDC
RS232 Output	V _{SOL} / V _{SOH}	-5VDC min / +5VDC min	V _{DD} =5VDC
Logic Input	V _{IL} / V _{IH}	0.8VDC max / 2.0VDC min	V _{DD} =5VDC
Logic Output	V _{OL} / V _{OH}	0.5VDC max / 2.4VDC min	I _{OH} =-2.0mA

OPTICAL & ENVIRONMENTAL SPECIFICATION

Parameter	Value
Display Area (X x Y mm)	83.05 x 41.45
Dot Size/Pitch (X x Y mm)	0.5 x 0.5 / 0.65 x 0.65
Luminance	600 cd/m ² (200 fL) Typ.
Colour of Illumination	Blue-Green (505nm)
Operating Temperature	-40°C to +85°C
Storage Temperature	-40°C to +85°C
Operating Humidity	20 to 85% RH @ 25°C

Optical filters can provide violet, red, yellow, blue & green output.

SOFTWARE COMMANDS

Hex	Command	Hex	Command
01-07	Run Macro	19	Reset
08	Backspace	1A + data	Write Mode
09	Horizontal Tab	1B + macro+len+data	Set Macro
0A	Line Feed	1B + 4D	Erase All Macros
0B	Home	1B + 4C/55	Lock/Unlock EEPROM
0C	Vertical Tab	1B + 43	Request Checksum
0D	Carriage Return	1B + 50/46	Power On/Off
0E	Clear End of Line	1B + 48/42	Hex Write On/Off
0F	Test	1B + 49 + data	Set Comms
10 + x + y	Cursor Position	1B + 44 + data	Enable I/O Port
11 +xl+yt+xr+yb	Set Area	1B + 4F + data	Set Port Lines
12 +xl+yt+xr+yb	Clear Area	1B + 52	Read Port
13 +xl+yt+xr+yb	Invert Area	1B + 4B	Enable key scanning
14 +xl+yt+xr+yb	Set Outline	1B + F8-FF	Brightness
15 +xl+yt+xr+yb	Clear Outline	1C / 1D / 1E	Select Font
16	Set Pixel	1F +xl+yl+xr+yb+data	Graphic Area Write ¹
17	Clear Pixel	20 - 7F	Character Write
18	Graphic Write		

¹ Applies to version 3 software only.

The module defaults to an 8 line of 21 character display using the 5x7 font with single pixel spacing. The cursor position auto increments after each character write. The bottom left of a character is placed at the cursor x,y. To send commands as hexadecimal, prefix the 2 bytes using character 60H. Example: `10`3F`01 = Position dot x=63 y=1. To send character 60H to the display, send 60H twice.

CHARACTER SETS

MINI FONT (PROPORTIONAL SPACING)

	00	01	02	03	04	05	06	07	08	09	0A	0B	0C	0D	0E	0F
20	!	"	#	\$	%	&	'	()	*	+	,	-	.	/	
30	0	1	2	3	4	5	6	7	8	9	:	;	<	=	>	?
40	a	b	c	d	e	f	g	h	i	j	k	l	m	n	o	
50	p	q	r	s	t	u	v	w	x	y	z	[\]	^	_

5x7 & 10x14 FONTS (FIXED SPACING)

	00	01	02	03	04	05	06	07	08	09	0A	0B	0C	0D	0E	0F
20	!"#\$%&'() * + , - . /															
30	0123456789:; < = > ?															
40	a b c d e f g h i j k l m n o															
50	p q r s t u v w x y z [\] ^ _															
60	` a b c d e f g h i j k l m n o															
70	p q r s t u v w x y z [\] ^ _															

CON1

Pin	Signal
1	VDD
2	RXD (RS232 in)
3	0V
4	TXD (RS232 out)
5	MB (RS232 out)
6	HB (RS232 in)

CON2

Pin	Signal	Pin	Signal
1	/SS	6	MISO
2	0V	7	SCK
3	VDD	8	/IRQ
4	/RES	9-16	P0-P7
5	MOSI		

The Module Busy line (MB) indicates the module is busy when low. If handshaking is not required, connect the Host Busy (HB) input to the Module Busy output.

Connect MISO and MOSI at power-up to enable the test mode and restore factory defaults.

CONTACT

Noritake Sales Office Tel Nos
 Nagoya Japan: +81 (0)52-561-9867
 Canada: +1-416-291-2946
 Chicago USA: +1-847-439-9020
 Munchen (D): +49 (0)89-3214-290
 Itron UK: +44 (0)1493 601144
 Rest Europe: +49 (0)61-0520-9220
www.noritake-iron.com

Subject to change without notice.
 IUK Doc. No. 003943 Iss.2
 22 Jan 03

Dot Graphic VFD Module

GU126x64F-K612A4

SOFTWARE COMMANDS

Instruction	Data Format	Description
Macro Start (BUSY time depends on contents)	01H - 07H	Start user defined macro 1-7.
Backspace (50µs)	08H	Non destructive backspace. Cursor is moved left by the width of the currently select font. If the cursor is at the left end of the display, no cursor movement is made.
Horizontal Tab (50µs)	09H	Cursor is moved right by the width of the currently select font. If the cursor is at the end of the display, no cursor movement is made.
Line Feed (50µs)	0AH	Moves the cursor down by the height of the currently selected font. If the cursor is at the bottom of the display, no cursor movement is made.
Home (50µs)	0BH	Moves the cursor horizontal position to 00H, the vertical positioning is dependent on the currently selected font, allowing for immediate character writing in the top-left corner of the display.
Vertical Tab (50µs)	0CH	Moves the cursor up one character row. If the cursor is at the top of the top end of the display, no cursor movement is made.
Carriage Return (50µs)	0DH	Moves the cursor horizontal position to 00H. The vertical position is unchanged.
Clear EOL (3ms)	0EH	Clear all characters from the current cursor position to the end of the display.
Test (50µs)	0FH	Place module into self-test mode. The module will repetitively show a few test screens. The test mode will exist on the next received byte.
Cursor Position (50µs)	10H + xpos + ypos	Set the cursor position.
Set Area (50µs + 2ms [last byte])	11H + xleft + ytop + xright + ybot	Fill specified area. All dots within the specified area are illuminated. Please note that the cursor position is affected with this command.
Clear Area (50µs + 2ms [last byte])	12H + xleft + ytop + xright + ybot	Clear specified area. All dots within the specified area are cleared. Please note that the cursor position is affected with this command.
Invert Area (50µs + 2ms [last byte])	13H + xleft + ytop + xright + ybot	Invert specified area. All dots within the specified area are inverted. Please note that the cursor position is affected with this command.
Set Outline (50µs + 2ms [last byte])	14H + xleft + ytop + xright + ybot	Draw box outline. All dots within the specified outline are unchanged. Please note that the cursor position is affected with this command.
Clear Outline (50µs + 2ms [last byte])	15H + xleft + ytop + xright + ybot	Clear box outline. All dots within the specified outline are unchanged. Please note that the cursor position is affected with this command.
Set Pixel (50µs)	16H	Illuminate a single pixel at the current cursor position.
Clear Pixel (50µs)	17H	Clear a single pixel at the current cursor position.
Graphic Write (50µs + 350µs [each data byte])	18H + len + data	Write graphical data, length <i>len</i> , direct to display. See write mode command (1AH) for graphic orientation and cursor movements.
Reset (1ms)	19H	Resets display to power-on defaults: - Display is cleared. 5x7 font selected. Write Mode = 00H Brightness Level = 7. VFD Power = On.
Write Mode (50µs)	1AH + data	Bit 7 = graphic data orientation - 0 = horizontal, 1 = vertical (<i>default = horizontal</i>) Bit 6 = cursor movement - 0 = horizontal, 1 = vertical (<i>default = horizontal</i>) Bit 5 = cursor direction - 0 = forward, 1 = backwards (<i>default = forwards</i>) Bit 4 = underscore cursor - 0 = off, 1 = on (<i>default = off</i>) Bit 3 = underscore cursor - 0 = static, 1 = flash (<i>default = static</i>) Bit 1/0 = pen type - 00 = overwrite, 01 = AND, 02 = OR, 03 = XOR (<i>default = overwrite</i>)
Set Macro (50µs [1BH], 10ms [macro], 50µs [len], 5ms [data], 20ms [last byte])	1BH + macro + len + data	Send macro data to EEPROM. <i>macro</i> = 00H - 07H. Macro0 is executed at power-up only. A maximum of 480 bytes is allowed for macro data. The display may flicker whilst writing macro data.
Brightness (50µs)	1BH + level	Set the display brightness. level = F8H - FFH. F8H = display off. F9H = minimum, FFH = maximum (<i>default</i>).
Erase Macros (100ms)	1BH + 4DH	Clear all downloaded macros in EEPROM. Screen may blank momentarily while macro data is being erased.
Lock/Unlock EEPROM (50µs + 5ms [last byte])	1BH + 4CH / 55H	All data contained within the non-volatile EEPROM is locked (4CH), and no changes are possible until the unlock command (55H) is executed.
Checksum (50µs)	1BH + 43H	All data received is added to the checksum. This command will read the lower 8-bits of that checksum, before being cleared. Please note that the checksum is cleared when executing the test mode.
Power On/Off (50µs)	1BH + 50H / 46H	50H = Turn on VFD power supply (<i>default</i>). 46H = Turn off VFD power supply, display's contents will be preserved.
Hex/Binary Mode (50µs)	1BH + 48H / 42H	48H = Enable hex receive mode, character 60H is interpreted as a hexadecimal prefix. 42H = Disable hex receive mode. Hex mode is enabled at power up.
Set Comms (50µs + 5ms [last byte])	1BH + 49H + data	Set asynchronous communication baud rate and parity. Takes effect at power-up or hardware reset. Bit 7 = Automatic I/O send (0=off, 1=on). Bits 1&0 = baud rate (00=4800, 01=9600, 02=19200, 03=38400). Bit 2 = Parity (1=even, 0=none) (<i>factory default = 19200 with no parity, automatic I/O send is off</i>)
Enable I/O Port (50µs + 5ms [last byte])	1BH + 44H + data	Set I/O port direction. A '1' indicates an input, a '0' an output. All output lines are immediately set low. All input lines have their pull-ups enabled. This value is store in EEPROM and will automatically be set at power up.
Set Port Lines (50µs)	1BH + 4FH + data	Set Output lines on I/O port, a '1' will set 5V on the output ports, or enable the pull-ups on the inputs.
Read Port (50µs)	1BH + 52H	Read current I/O port status. A single byte is transmitted showing the current state of the I/O lines.
Enable Key Scanning (50µs + 5ms [last byte])	1BH + 4BH	Set I/O port to key scanning. The I/O ports are continuously scanned for any key press. This mode is stored in EEPROM and will automatically be selected at power up.
Select Font (50µs)	1CH / 1DH / 1EH	Select font. 1CH = proportional mini font. 1DH = fixed spaced 5x7 font. 1EH = fixed spaced 10x14 font.
Graphic Area Write (50µs + 350µs [each data byte])	1FH + xl + yt + xr + yb + data	Write graphic data within defined area. See write mode command (1AH) for graphic orientation and cursor movements. Note: This command is available on software version 3 only.
Hex Prefix (50µs + 50µs + command BUSY)	60H + dhH + diH	Write to the display module using a 2-byte hexadecimal number. dhH = high nibble, diH = low nibble. E.g. Sending '19 will reset the display.
Character Write (800µs)	20H - 7FH	Display character from selected font.

Notes: - Busy times are not inclusive of a 100µs scan period, this must be taken into consideration. If the cursor is enabled, busy times will increase by a further 50µs. All coordinates are absolute. The origin (00H, 00H) is the top left of the display. All data shown is in hexadecimal format.

NORITAKE ITRON VFD MODULES

GU126x64F-K612A4

INTERFACING TO THE GU126x64F-K612A4

All control communication to the VFD module is by the RS232 asynchronous or TTL synchronous serial interfaces. The asynchronous communication speed and parity can be changed with the 'UART SETUP' command. These settings are stored in EEPROM and become active at power up or hardware reset. The factory default settings are 19200 baud, with no parity.

ASYNCHRONOUS SERIAL COMMUNICATION

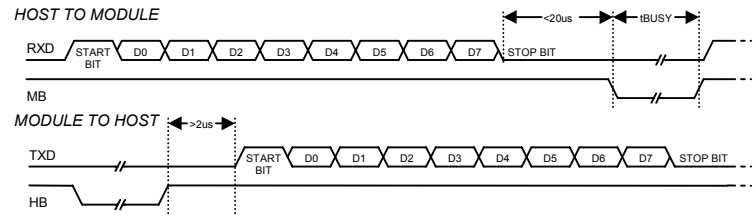
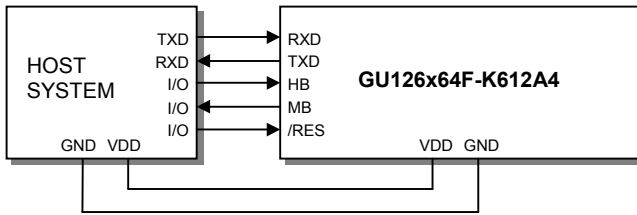
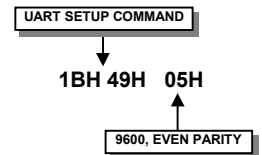
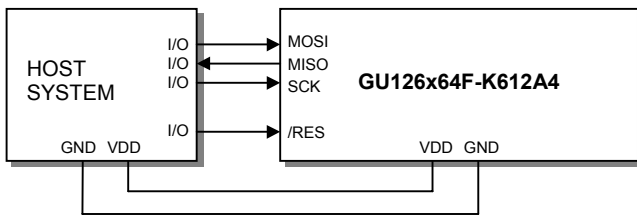


Fig1: Waveforms show RS232 asynchronous serial.

The host must provide adequate delays for the module to process the command and data. These 'busy' times are specified in the software command section. To change from the default communication settings, use the 'UART SETUP' command. Any changes of the communications settings are stored in non-volatile EEPROM and become effective at power up.



SYNCHRONOUS SERIAL COMMUNICATION



When using synchronous communications. Data is clocked in on the rising edge of SCK. The most significant bit of the data byte should be sent first.

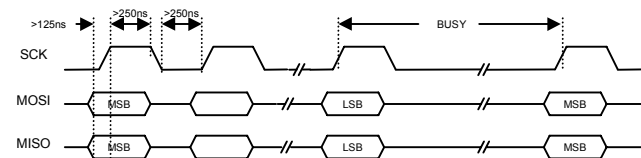
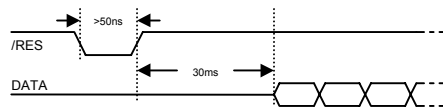


Fig2: Waveforms show TTL synchronous serial.

The host must provide adequate delays for the module to process the data. These data/command busy times are specified in the software command section.

RESET TIMING

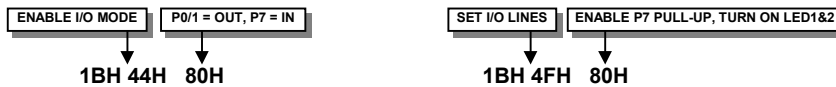


The module is reset when a low-level signal is applied to the /RES line. This will cause the module to clear the display, initialise the UART setting and set all power-up defaults. During this initialisation period, the user must delay any transmission to the module.

I/O CONTROL

The module contains simple Input and Output functions for the 8 I/O lines (P7-P0). All inputs include an optional pull-up resistor, 30K-120K in value. The outputs can source ~5mA and sink ~30mA.

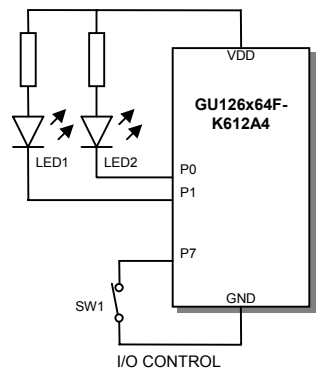
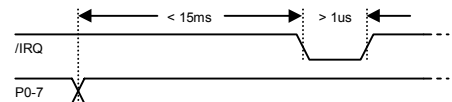
The following example sets up the I/O lines to control the 2 LED's and provide a pull-up resistor for the switch.



The status of P0-P7 can be transmitted when a change in level is detected on any pin. This automatic response mode can be enabled by using the 'UART SETUP' command. When this mode is enabled, the VFD module can reliably check port changes every 15ms. With auto send disabled (default) a manual read command is required to determine the port status.



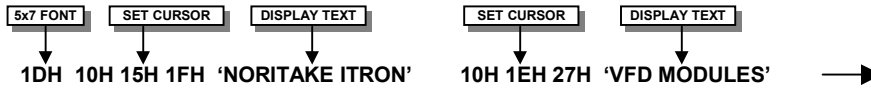
When using synchronous serial communications, the host can detect a level change with the /IRQ line on CON2. This allows the host to poll the port status only when needed.



DISPLAYING TEXT

The module contains 3 font sizes, a proportional mini-font, 5x7 pixel, and a 10x14 pixel font. Characters of any size can be written to any part of the display. All data sent to the module from 20H to 7FH is treated as character data. Characters are positioned above the current cursor position, see Fig1. Each character written will include a one pixel space on the right side of the character. After each character is written to the display, the cursor position is automatically advanced. If the cursor position reaches the end of the display, the host must reposition to the next line.

The following example displays two text messages in the center of the display.



The next example displays one line of text using the 10x14 font.



The module can display a cursor to aid character positioning and text input. The size of the cursor depends upon the currently selected font, and can be set to flash or remain static.

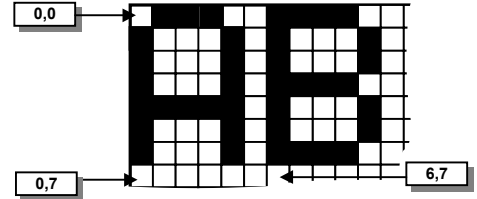
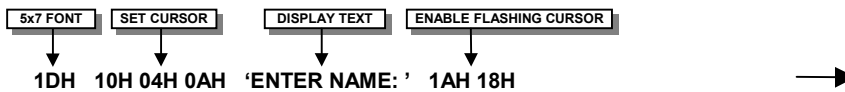
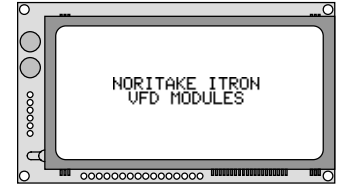
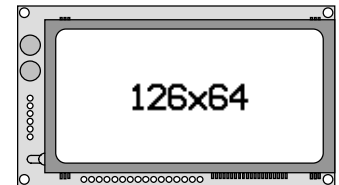


Fig3: Cursor Positioning, example of writing 2 characters from cursor position 0,7.



Displaying text in the small 5x7 font.



Displaying text in the large 10x14 font.

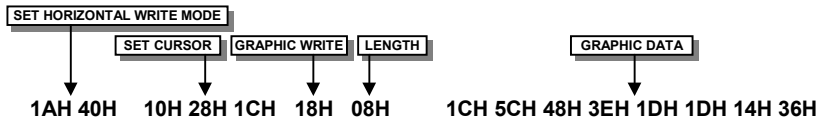


Using the cursor to aid user input.

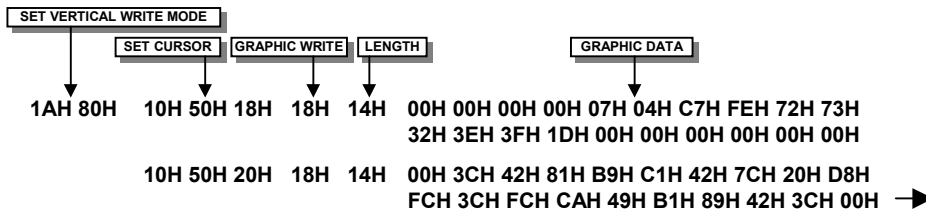
DISPLAYING GRAPHICS

Graphical images can be displayed on the VFD module in either a horizontal or vertical byte orientation. After each graphical data write, the cursor is automatically advanced, depending upon the direction selected in the 'Write Mode' command. The most significant bit is positioned to the top (vertical data) or to the left (horizontal data).

The following example displays a simple graphical image using horizontal graphic data. The write mode is first set to horizontal data format, with a vertical cursor movement. The cursor is positioned before sending the 8 byte of graphical data using the graphics command.



The next example displays a simple graphical image using vertical graphical data. The write mode is first set to vertical data format, with a horizontal cursor movement. The cursor is positioned, then the top 20 bytes are sent using the graphic write command. The cursor is then repositioned to send the bottom 20 graphical bytes.



The graphic area write command 1FH uses top-left and bottom-right XY co-ordinates to define an area to which graphical data bytes will be written. The orientation is set-up using the write mode command 1AH. Unused bits are masked where the screen area is not a byte multiple.

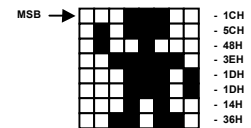


Fig4: Graphic Image using horizontal data

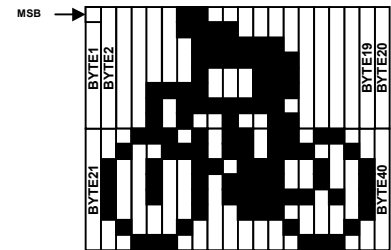
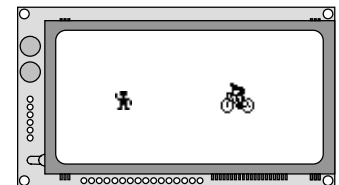


Fig5: Graphic Image using vertical data

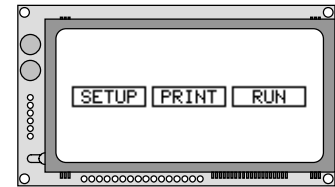
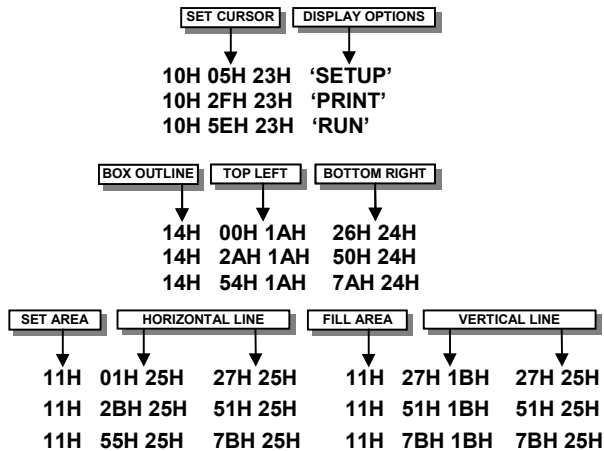


Displaying graphic images in vertical and horizontal format.

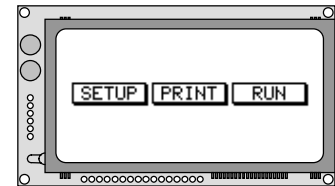
AREA COMMANDS

The VFD module contains commands to fill, clear and invert defined areas of the display. Also an outline command is available to draw rectangles around objects.

The following example displays three options for the user to select, each option is contained within a box with a shadow effect. Drawing horizontal and vertical line using the fill area command creates the shadow effect.

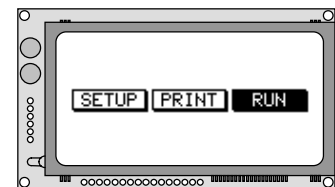


Boxes created using the 'Set Outline' command.



Drop Shadows created with the 'Set Area' command.

The next example uses the invert area command to select one of the options.

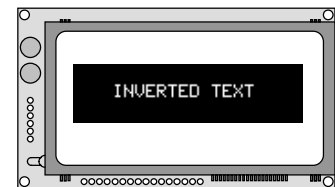
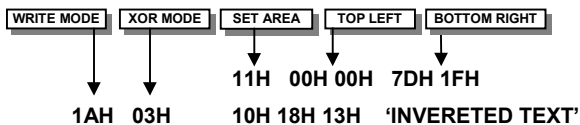


Option 'Run' selected with the 'Invert Area' command.

WRITE MODES

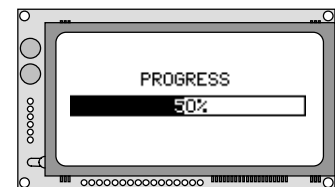
By default, display data that is overwritten will be cleared prior to displaying any new data. This display data can be maintained whilst writing by selecting the 'OR' mode with the 'Write Mode' command, this will effectively merge the old data with the new. The 'AND' write mode will only display written data if existing data is present on the display. The other 'Write Mode' is 'XOR' which can be useful for writing text on an inverted display.

The following example uses the XOR mode to write text on a full display.



Displaying inverted text using the 'Write Mode' command.

This next example uses the XOR mode to display the percentage completed on a progress bar.

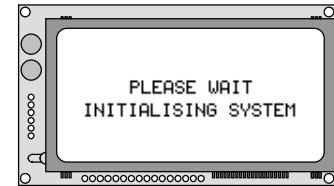


Using inverting text for displaying progress level.

MACROS

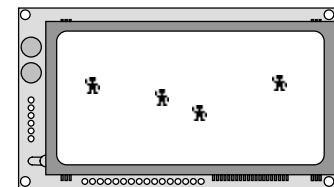
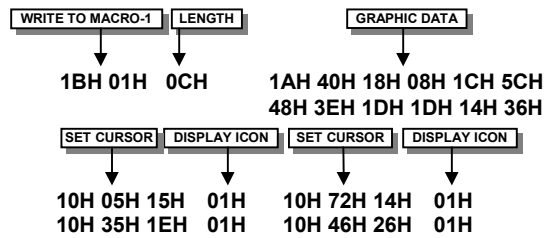
A string of data and commands can be sent to the module and stored in non-volatile EEPROM by using the macro feature. This string of data and commands can then be executed by using just one command. Up to 8 macros can be used at any one time, one of these is executed at power-up.

This example uses the first macro (Macro 0) to display an initial message at power-up.



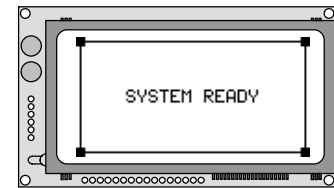
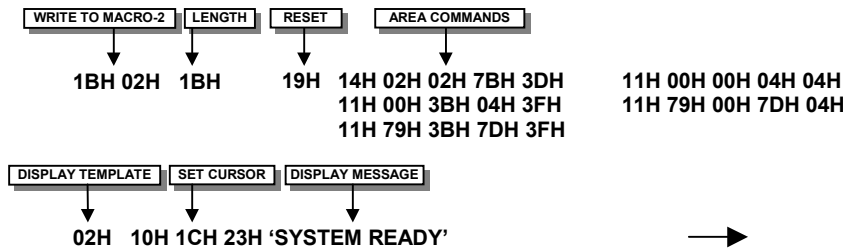
Power-Up message using Macro 0.

This next example saves the previous graphic icon into Macro 1, and then is used as a user-defined character.



Using Macros as user-defined characters.

This example creates a display template, which can be helpful if many screens require the same look.



Using Macros as a screen template.

EEPROM PROTECTION

The EEPROM contains information such as macro data, asynchronous communication settings and I/O configuration. So it is important to protect this information from stray commands due to communication failures. To protect the EEPROM, the module contains a 'EEPROM Lock' command (1BH + 4CH). Once this command is issued, no further EEPROM updates can be made until it is unlocked (1BH + 55H).

USING THE CHECKSUM

All data written to the module is added to an internal checksum. The lower 8-bits of this checksum can be read at any time from the module by the host system to confirm accurate data transfer. It is up to the user if or when this feature should be used. The checksum is cleared at power-up and after each checksum read.

Example: Read checksum at power-up, or directly after it has been cleared.



Example: Read checksum after data has been written to the display.



X-ON Electronics

Largest Supplier of Electrical and Electronic Components

Click to view similar products for [noritake](#) manufacturer:

Other Similar products are found below :

[GU140X16J-7000B](#) [EFP127X098B07A](#) [GU160X80E-7900B](#) [GU256X64D-7000](#) [GU128x18F-K612A2](#) [GU140X32F-7003B](#)
[EFP105X067B07A](#) [CU20049-UW2A](#) [CU24043-Y100](#) [GU140X16G-7000B](#) [CU24043-Y1A](#) [GU126X64F-K612A4](#) [GT800X480A-C903P](#)
[GU256X16M-K612C5](#) [GTWX101VLB00P](#) [GE256X64C-7933B](#) [GTWV070C3A00PA](#) [GU256X128E-3900B](#) [GT800X480A-C903PA](#)
[CU22042-Y1A](#) [GTWQ043C3A00PA](#) [EFP164X104B07A](#) [GU128X8T-K612C5](#) [GU256X128D-3900B](#) [TKU016CT-A100](#)
[GTWV050C3A00PA](#) [GU128X64-800B](#) [GTWX101VHA00P](#) [CU16025-UW2J](#) [GU128X32D-7003](#) [CU20025-UW1J](#) [GU256X64F-9900](#)
[CU22042-Y100](#) [GU256X64E-3900B](#) [GTWV050VHB00P](#) [CU40026-TW200A](#) [GT800X480A-1303P](#) [GU140X16G-7806A](#) [GU140X32F-7003](#)
[GU140X32F-7806A](#) [CU16025-UX6J](#) [GU256X64C-3900B](#) [CU20025-UX1J](#) [GTWV070VHA00P](#) [GU256X64D-3900B](#) [CU20045SCP-B-T31A](#)
[GU256X128C-3900B](#) [CU20049-UW2J](#) [CU16029-UW1J](#) [GU280X16G-7000](#)