



ELECTRONICS, INC.
 44 FARRAND STREET
 BLOOMFIELD, NJ 07003
 (973) 748-5089
<http://www.nteinc.com>

NTE458 N-Channel Silicon JFET General Purpose, Low Noise, Audio Frequency Amplifier TO92 Type package

Features:

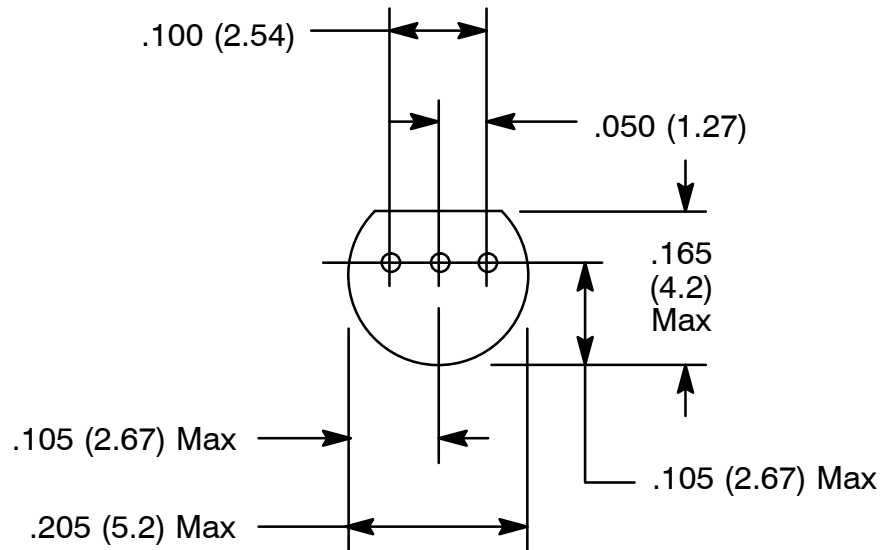
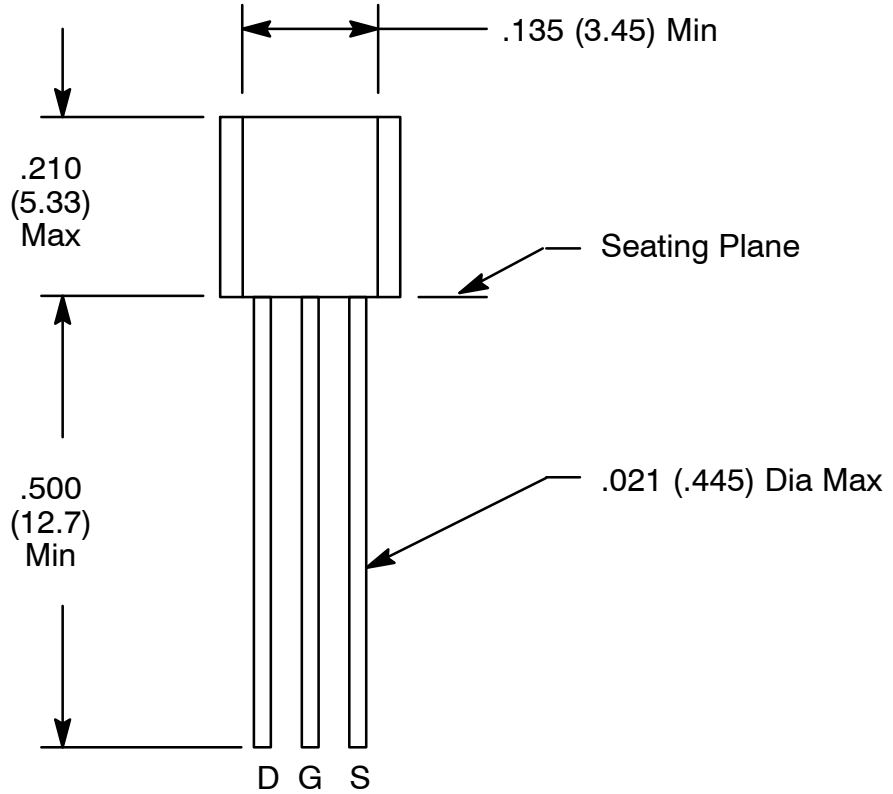
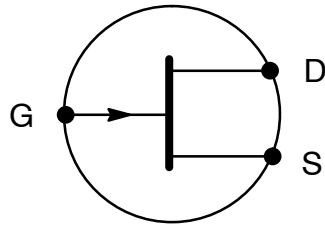
- Very Low Noise
- Low Gate Current

Absolute Maximum Ratings: ($T_A = +25^{\circ}\text{C}$ unless otherwise specified)

Gate-Drain Voltage, V_{GDO}	-50V
Gate-Source Voltage, V_{GSO}	-50V
Drain-Source Voltage ($V_{DS} = -2V$), V_{DSX}	50V
Drain Current, I_D	20mA
Gate Current, I_G	10mA
Total Device Dissipation, P_T	250mW
Operating Junction Temperature, T_J	+125 $^{\circ}\text{C}$
Storage Temperature Range, T_{stg}	-55 $^{\circ}\text{C}$ to +125 $^{\circ}\text{C}$

Electrical Characteristics: ($T_A = +25^{\circ}\text{C}$ unless otherwise specified)

Parameter	Symbol	Test Conditions	Min	Typ	Max	Unit
Gate Reverse Current	I_{GSS}	$V_{GS} = -20V, V_{DS} = 0$	-	-	-1	nA
Zero-Gate Voltage Drain Current	I_{DSS}	$V_{DS} = 10V, V_{GS} = 0$	0.5	3.0	12	mA
Gate-Source Voltage	$V_{GS(off)}$	$V_{DS} = 10V, I_D = 10\mu A$	-0.13	-0.5	-1.5	V
Forward Transconductance	g_{fs}	$V_{DS} = 10V, I_D = 0.5mA, f = 1kHz$	4.0	5.2	-	mhos
		$V_{DS} = 10V, V_{GS} = 0, f = 1MHz$	4.0	12	-	mhos
Input Capacitance	C_{iss}	$V_{DS} = 10V, V_{GS} = 0, f = 1MHz$	-	13	-	pF
Reverse Transfer Capacitance	C_{rss}	$V_{DS} = 10V, V_{GS} = 0, f = 1MHz$	-	2.6	-	pF
Noise Frequency	NF	$V_{DS} = 10V, V_{GS} = 0, R_G = 1k\Omega, f = 10Hz$	-	5.0	10	dB
		$V_{DS} = 10V, V_{GS} = 0, R_G = 1k\Omega, f = 100Hz$	-	1.0	3.0	dB
		$V_{DS} = 10V, V_{GS} = 0, R_G = 1k\Omega, f = 1kHz$	-	0.6	1.5	dB
Noise Voltage	NV	$I_D = 0.5mA, R_G = 1k\Omega, f = 10Hz \text{ to } 1kHz \text{ (at } V_G = -3dB)$	-	15	20	mV



X-ON Electronics

Largest Supplier of Electrical and Electronic Components

Click to view similar products for [MOSFET](#) category:

Click to view products by [NTE](#) manufacturer:

Other Similar products are found below :

[614233C](#) [648584F](#) [MCH3443-TL-E](#) [MCH6422-TL-E](#) [FDPF9N50NZ](#) [FW216A-TL-2W](#) [FW231A-TL-E](#) [APT5010JVR](#) [NTNS3A92PZT5G](#)
[IRF100S201](#) [JANTX2N5237](#) [2SK2464-TL-E](#) [2SK3818-DL-E](#) [FCA20N60_F109](#) [FDZ595PZ](#) [STD6600NT4G](#) [FSS804-TL-E](#) [2SJ277-DL-E](#)
[2SK1691-DL-E](#) [2SK2545\(Q,T\)](#) [405094E](#) [423220D](#) [MCH6646-TL-E](#) [TPCC8103,L1Q\(CM](#) [367-8430-0972-503](#) [VN1206L](#) [424134F](#)
[026935X](#) [051075F](#) [SBVS138LT1G](#) [614234A](#) [715780A](#) [NTNS3166NZT5G](#) [751625C](#) [873612G](#) [IRF7380TRHR](#) [IPS70R2K0CEAKMA1](#)
[RJK60S3DPP-E0#T2](#) [RJK60S5DPK-M0#T0](#) [APT5010JVFR](#) [APT12031JFLL](#) [APT12040JVR](#) [DMN3404LQ-7](#) [NTE6400](#) [JANTX2N6796U](#)
[JANTX2N6784U](#) [JANTXV2N5416U4](#) [SQM110N05-06L-GE3](#) [SIHF35N60E-GE3](#) [2SK2614\(TE16L1,Q\)](#)