



ELECTRONICS, INC.
 44 FARRAND STREET
 BLOOMFIELD, NJ 07003
 (973) 748-5089

NTE5536 Silicon Controlled Rectifier (SCR)

Description:

The NTE5536 is a silicon controlled rectifier (SCR) in a TO220 type package designed for use as back-to-back SCR output devices for solid state relays or applications requiring high surge operation.

Features:

- 400A Surge Capability
- 800V Blocking Voltage

Absolute Maximum Ratings:

Peak Reverse Blocking Voltage (Note 1), V_{RRM}	800V
RMS Forward Current ($T_C = +80^{\circ}C$, Note 2), $I_{T(RMS)}$	40A
Average Forward Current (All Conduction Angles, Note 2), $I_{T(AV)}$	25A
Peak Non-Repetitive Surge Current (1/2 Cycle, Sine Wave), I_{TSM}	
8.3ms	400A
1.5ms	450A
Forward Peak Gate Power, P_{GM}	20W
Forward Average Gate Power, $P_{G(AV)}$	500mW
Forward Peak Gate Current (300 μ s, 120 PPS), I_{GM}	2A
Operating Junction Temperature Range, T_J	-40° to +125°C
Storage Temperature Range, T_{stg}	-40° to +150°C
Thermal Resistance, Junction-to-Case, R_{thJC}	1°C/W
Thermal Resistance, Junction-to-Ambient, R_{thJA}	60°C/W

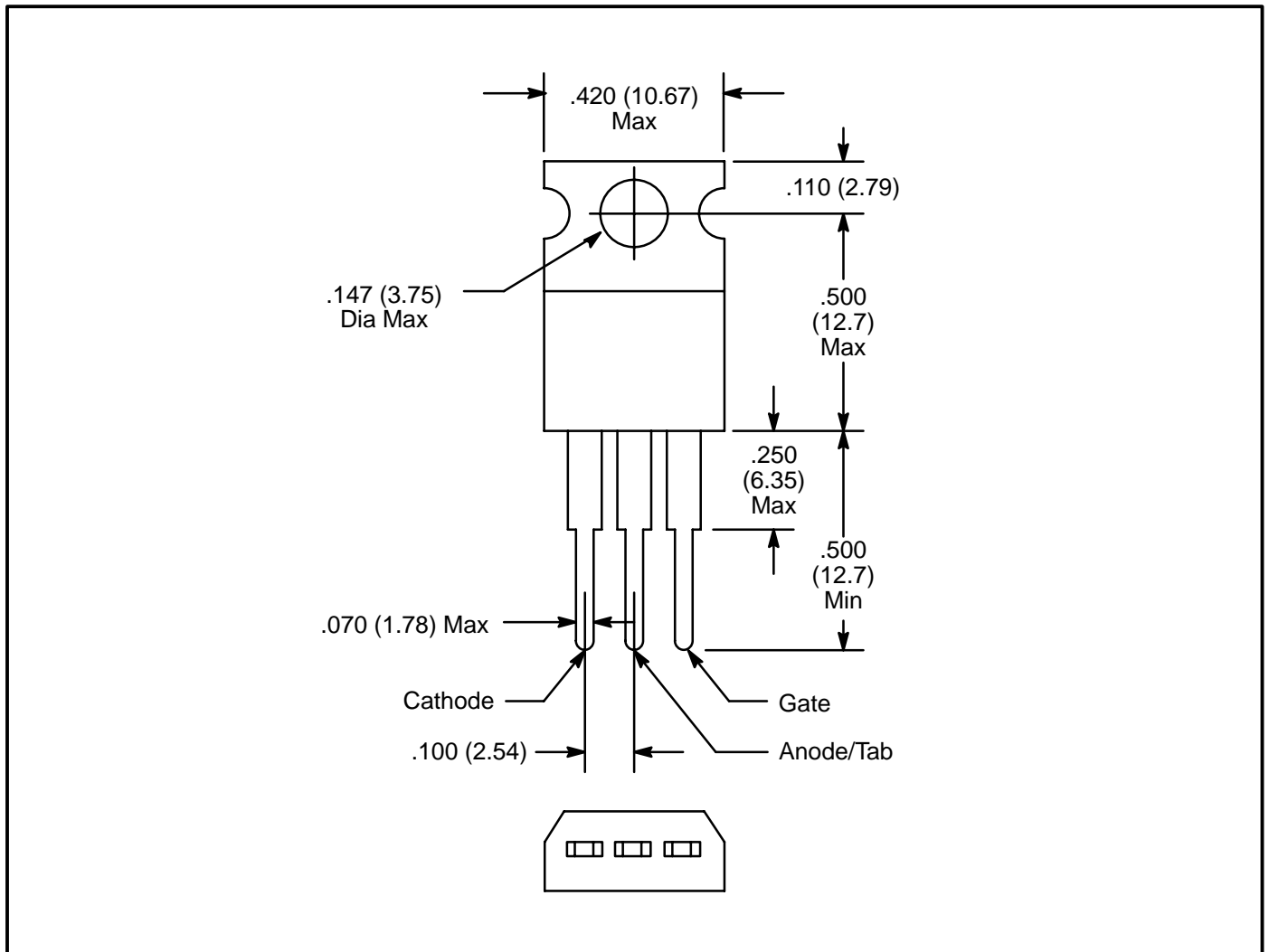
Note 1. V_{RRM} can be applied on a continuous DC basis without incurring damage. Ratings apply for zero or negative voltage. Device should be tested for blocking capability in a manner such that the voltage supplied exceeds the rated blocking voltage.

Note 2. This device is rated for use in applications subject to high surge conditions. Care must be taken to insure proper heat sinking when the device is to be used at high sustained currents.

Electrical Characteristics: ($T_C = +25^\circ\text{C}$ unless otherwise specified)

Parameter	Symbol	Test Conditions	Min	Typ	Max	Unit
Peak Forward Blocking Voltage	V_{DRM}	$T_J = +125^\circ\text{C}$	800	–	–	V
Peak Forward or Reverse Blocking Current	$I_{\text{DRM}}, I_{\text{RRM}}$	Rated V_{DRM} or $V_{\text{RRM}}, T_J = +25^\circ\text{C}$	–	–	10	μA
		Rated V_{DRM} or $V_{\text{RRM}}, T_J = +125^\circ\text{C}$	–	–	2	mA
Forward ON Voltage	V_{TM}	$I_{\text{TM}} = 80\text{A}$, Note 3	–	1.6	2.0	V
Gate Trigger Current, Continuous DC	I_{GT}	Anode Voltage = 12V, $R_L = 100\Omega$	–	15	50	mA
		Anode Voltage = 12V, $R_L = 100\Omega$, $T_C = -40^\circ\text{C}$	–	30	90	mA
Gate Trigger Voltage, Continuous DC	V_{GT}	Anode Voltage = 12V, $R_L = 100\Omega$	–	1.0	1.5	V
Gate Non-Trigger Voltage	V_{GD}	Anode Voltage = 800V, $R_L = 100\Omega$, $T_J = +125^\circ\text{C}$	0.2	–	–	V
Holding Current	I_{H}	Anode Voltage = 12V	–	30	60	mA
Turn-On Time	t_{gt}	$I_{\text{TM}} = 40\text{A}$, $I_{\text{GT}} = 60\text{mA}$	–	1.5	–	μs
Critical Rate of Rise of Off-State Voltage	dv/dt	$V_{\text{DRM}} = 800\text{V}$, Gate Open, Exponential Waveform	–	50	–	$\text{V}/\mu\text{s}$

Note 3. Pulse test: Pulse Width $\leq 300\mu\text{s}$, Duty Cycle $\leq 2\%$.



X-ON Electronics

Largest Supplier of Electrical and Electronic Components

Click to view similar products for [SCRs category](#):

Click to view products by [NTE manufacturer](#):

Other Similar products are found below :

[NTE5428](#) [NTE5448](#) [NTE5457](#) [NTE5511](#) [T1500N16TOF VT](#) [T720N18TOF](#) [T880N14TOF](#) [T880N16TOF](#) [TS110-7UF](#) [TT104N12KOF-A](#)
[TT104N12KOF-K](#) [TT162N16KOF-A](#) [TT162N16KOF-K](#) [TT330N16AOF](#) [VS-16RIA100](#) [VS-22RIA20](#) [VS-2N5206](#) [VS-2N685](#) [VS-](#)
[40TPS08A-M3](#) [VS-ST230S12P1VPBF](#) [057219R](#) [CLB30I1200HB](#) [T1190N16TOF VT](#) [T1220N22TOF VT](#) [T201N70TOH](#) [T830N18TOF](#)
[TD92N16KOF-A](#) [TT250N12KOF-K](#) [VS-2N692](#) [VS-2N689](#) [VS-25RIA40](#) [VS-16RIA120](#) [VS-10RIA120](#) [VS-30TPS08PBF](#) [NTE5427](#)
[NTE5442](#) [VS-2N690](#) [VS-ST300S20P0PBF](#) [TT251N16KOF-K](#) [VS-22RIA100](#) [VS-16RIA40](#) [CR02AM-8#F00](#) [VS-ST110S12P0VPBF](#)
[TD250N16KOF-A](#) [VS-ST110S16P0](#) [VS-10RIA10](#) [VS-16TTS08-M3](#) [TS110-7A1-AP](#) [T930N36TOF VT](#) [T2160N24TOF VT](#)