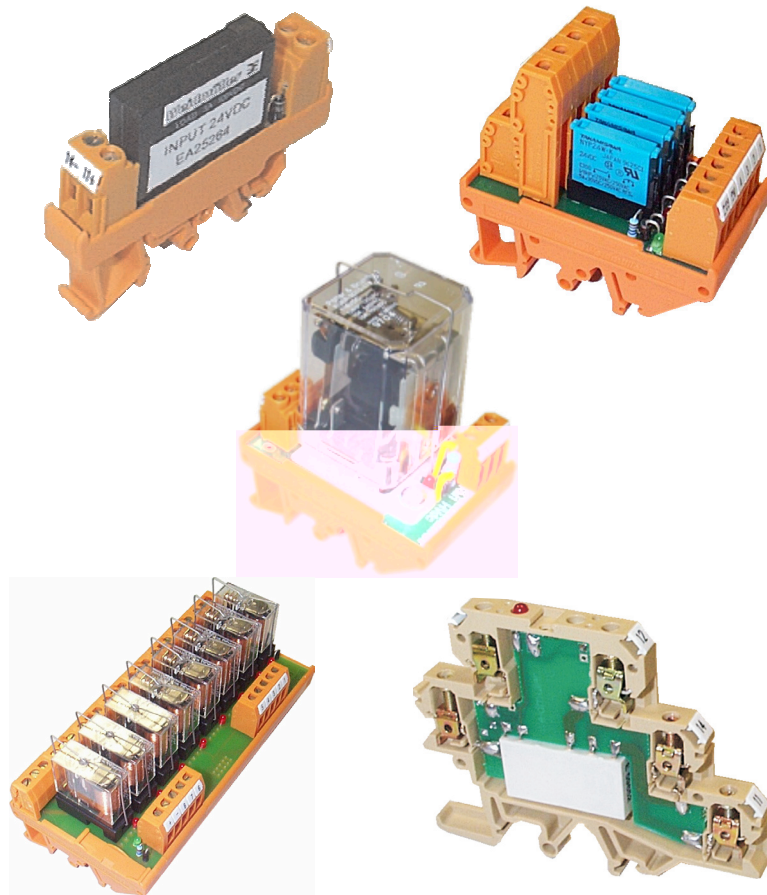


Single & Multi-Channel Relays Optocouplers Solenoid Drivers Ideal PLC I/O



Weidmüller's single and multi-channel, mechanical and solid-state relays provide simple, compact solutions to your digital PLC/IO applications.

- **ECO30, MC5R and RSM1** - Single Channel Relays
- **Solenoid Driver and MC50** - Single Channel Solid-State Relays
- **RSM Series** - Minature Mutichannel Relays
- **RSM Series** - Multichannel Relays

Australia

Weidmüller Pty Ltd.
43 Huntingwood Drive, Huntingwood
NSW 2148
Phone +61 (0) 2 9671 9999
Fax +61 (0) 2 9671 9900
Info@weidmuller.com.au
www.weidmuller.com.au

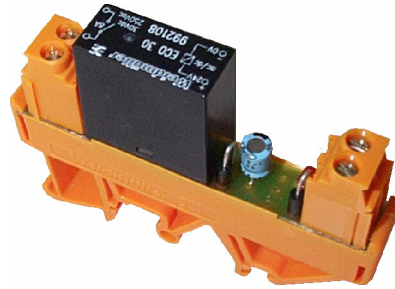
Other countries

Weidmüller Interface GmbH & Co.
Postfach 3030
32720 Detmold
Phone +495231-14-0
Fax +495231-14-2083
info@weidmueller.com
www.weidmueller.com

ECO30 - Low Cost, Single Channel Normally Open Relay

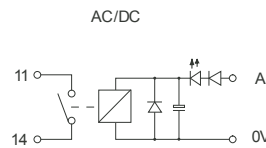
Features

- Low Cost
- 24Vac/dc Input voltage
- 8A/240Vac rated outputs
- Compact 11.5mm wide housing
- Dual DIN rail mount
- 4000Vrms isolation
- LED Diode state indication
- Coil back-EMF diode protection



Circuit diagram

1 Normally Open



Technical Data

Input

Nominal Operating Voltage	24Vac/dc
Nominal Operating Current	26mA
Relay Drop-out current	5.5mA @ 20°C
Relay Pick-up current	12.5mA @ 20°C
AC Frequency Range	47-63Hz

Output

Type	Normally Open Contact
Contact material	Silver Alloy (Cadmium free)
Nominal Switching Capacity	250Vac 8A, 30Vdc 8A (resistive)
Maximum Continuous Current	8A (at maximum voltage) resistive - refer to derating curve
Minimum Switching Capacity	5Vdc, 100mA
Maximum Switching Power	2000VA, 240W
Operate time/Release time (at nominal voltage)	12ms/9ms
Maximum operating frequency (at rated load)	20Hz
Contact Life	at rated load 100,000 operations minimum lamp load 25,000 operations minimum
Mechanical life	2,000,000 operations

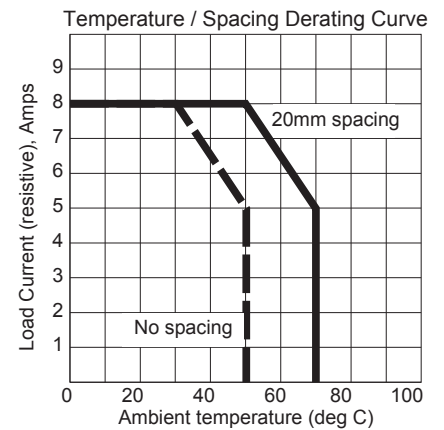
Isolation

Initial breakdown voltage	Between open contacts	1000Vac
	Between contacts & coil	4000Vac
Surge Strength		5000V

General

Terminal width		11.2mm
Width across rail		70mm
Height on rail	TS32	60mm
	TS35 x 7.5	55mm
	TS35 x 15	62.5mm
Operating temperature range	without clearance	-25°C to +50°C
	with 20mm clearance	-25°C to +70°C
Conductor size	Solid	0.5 to 4.0mm ²
	Flexible	0.5 to 2.5mm ²

Installation



Mounting.



General

Warning: to be installed/maintained by qualified personnel as per instructions, or module safety may be compromised.
Design for IEC664 Installation Category II use.

Cleaning

Wipe only with a damp cloth (remove power before cleaning).

Location

To be installed in a metal enclosure.

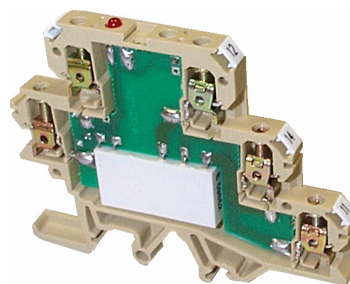
Ordering Information

ECO 30: 24 VAC/DC N/O **7940005581**

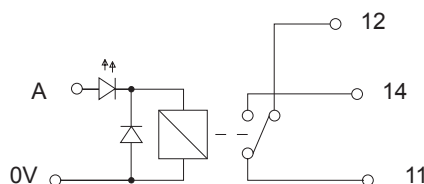
MC5R - Single Channel Change-Over Relay

Features

- Ultra compact 6mm wide housing
- Change-over contact
- 6A/240Vac rated
- Combifoot housing: TS32 & TS35
- 4000Vrms isolation
- LED relay state indication
- Input diode protection
- Coil back-EMF diode protection



Circuit diagram



Mounting.



Technical Data

Input A (Nominal Voltage)

Nominal Operate Voltage (typical)

Nominal Operate current @ 20°C (typical)

Drop-out current @ 20°C (typical)

Pick-up current (typical)

AC Frequency Range

12Vdc	24Vdc	48Vdc	220/240Vac	110/120Vac
-	-	-	160-250Vac	85-125Vac
14mA	7mA	15mA	14mA	7mA
2.5mA	1.7mA	0.7mA	-	-
9mA	3.2mA	2.2mA	-	-
-	-	-	47-63Hz	47-63Hz

Output

Type

Contact material

Standard

Gold plated

Nominal Switching Capacity

Maximum Continuous Current

Minimum Switching Capacity

Standard

Gold plated

Maximum Switching Power

Operate time/Release time (at nominal voltage)

Maximum Operating speed

Contact Life

Mechanical life

Change-over Contact
Silver Alloy (Cadmium free)
Gold overlay on silver alloy (for low current switching)
250Vac 6A, 30Vdc 6A (resistive) - Refer to load limit curve
6A (at maximum voltage) resistive
12Vdc, 500mA
100mVdc, 0.1mA
1500VA, 180W
10mS/5mS
6 operations per second
10,000,000 @ 10mA, 24Vdc 5,000 @ 6A, 250Vac
10,000,000 operations

Isolation

Initial breakdown voltage

Between open contacts

Between contacts & coil

Surge Strength

General

Terminal width

Width across rail

Height on rail

TS32

TS35 x 7.5

TS35 x 15

Operating temperature range

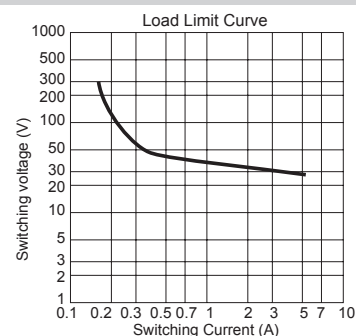
Conductor size

Solid

Flexible

750Vac
2000Vac
4000V
6mm
76mm
68mm
63mm
71mm
-40°C to +60°C
0.5 to 4.0mm ²
0.5 to 2.5mm ²

Installation



General

Warning: to be installed/maintained by qualified personnel as per instructions, or module safety may be compromised.

Design for IEC664 Installation Category II use.

Cleaning

Wipe only with a damp cloth (remove power before cleaning).

Location

To be installed in a metal enclosure.

Ordering Information

MC5R Ordering

Nom. Volt.	Silver Alloy Contacts	Gold Plated Contacts
12Vdc	7901610000	7906840000
24Vdc	7901620000	7906850000
48Vdc	7901630000	7906860000
110/120Vac	7901500000	
220/240Vac	7901520000	

Accessories

End Plate	AP	7940005681
End Brackets	EW(TS35)	0383560000
	EWK(TS32)	0206160000

Cross Connection Parts

Insulated	2 pole	0482700000
	3 pole	0482800000
	4 pole	0482900000
Uninsulated	75 pole straight	0535200000
	75 pole angled	0526400000

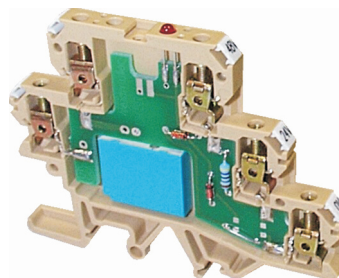
Mounting rail

TS32	0122800000
TS35 x 7.5	0383400000
TS35 x 15	0236400000

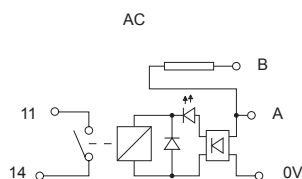
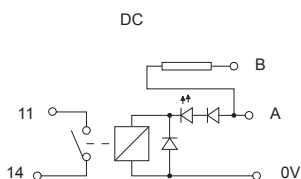
MC5R - Single Channel, Dual Voltage, Normally Open Contact

Features

- Dual Input Voltage
- Gold plated normally open contact
- Ultra compact 6mm wide 'Combifoot' housing suits TS32 & TS35
- 4000Vrms isolation
- LED relay state indication
- Reverse polarity diode protection
- Coil back-EMF diode protection



Circuit diagram



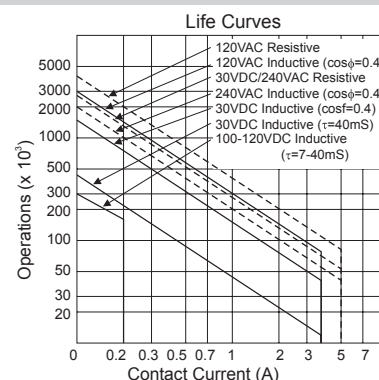
Mounting.



Technical Data

Input A(B) Nominal Voltage	12(24)Vdc	24(48)Vdc	12(24)Vac/dc	24(48)Vac/dc
Operating Current (A or B)	14mA	7mA	15mA	7mA
Relay Drop-out current @ 20°C	2.5mA	5.5mA		
Relay Pick-up current @ 20°C	11mA	12.5mA		
AC Frequency Range			47-63Hz	47-63Hz
Output	Normally Open Contact			
Type	Normally Open Contact			
Contact material	Gold overlay on silver alloy (for low current switching)			
Nominal Switching Capacity	250Vac 4A, 30Vdc 4A (resistive)			
Maximum Continuous Current	5A (at maximum voltage) resistive			
Minimum Switching Capacity	100mVdc, 0.1mA			
Maximum Switching Power	1000VA, 120W			
Operate time/Release time (at nominal voltage)	10mS/5mS			
Maximum operating speed (at rated load)	20 cycles per second			
Contact Life (see also life curve)	100,000 @ 4A, 30Vdc 30,000 @ 5A, 250Vac			
Mechanical life	20,000,000 operations			
Isolation	Between open contacts 750Vac			
Initial breakdown voltage	Between contacts & coil 2000Vac			
Surge Strength	4000V			
General	Terminal width 6mm			
Width across rail	76mm			
Height on rail	TS32 68mm			
	TS35 x 7.5 63mm			
	TS35 x 15 71mm			
Operating temperature range	-40°C to +60°C			
Conductor size	Solid 0.5 to 4.0mm ²			
	Flexible 0.5 to 2.5mm ²			

Installation



General

Warning: to be installed/maintained by qualified personnel as per instructions, or module safety may be compromised.

Design for IEC664 Installation Category II use.

Cleaning

Wipe only with a damp cloth (remove power before cleaning).

Location

To be installed in a metal enclosure.

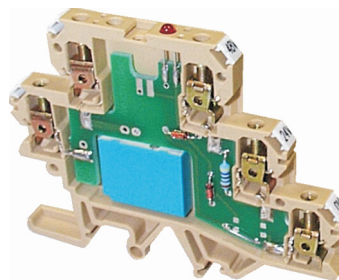
Ordering Information

Nom. Volt. A	Nom. Volt. B	Cat. No.
12Vdc	24Vdc	7901540000
24Vdc	48Vdc	7901550000
12Vac/dc	24Vac/dc	7901560000
24Vac/dc	48Vac/dc	7901570000
Accessories		
End Plate	AP	7940005681
End Brackets	EW(TS35) EWK(TS32)	0383560000 0206160000
Cross Connection Parts		
Insulated	2 pole 3 pole 4 pole	0482700000 0482800000 0482900000
Uninsulated	75 pole straight 75 pole angled	0535200000 0526400000
Mounting rail		
TS32		0122800000
TS35 x 7.5		0383400000
TS35 x 15		0236400000

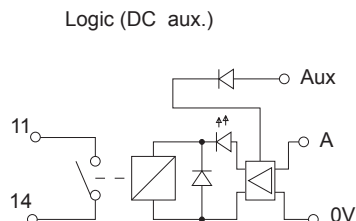
MC5R - Single Channel, Logic, Normally Open Contact

Features

- 5-15V logic input with 24Vdc supply
- Gold plated normally open contact
- Ultra compact 6mm wide 'Combifoot' housing suits TS32 & TS35
- 4000Vrms isolation
- LED relay state indication
- Reverse polarity diode protection
- Coil back-EMF diode protection



Circuit diagram



Mounting.



Technical Data

Input A(Aux) Nominal Voltage

Operating Current (A or B)	<0.4mA (7mA)
Relay Drop-out current @ 20°C	5.5mA
Relay Pick-up current @ 20°C	12.5mA

Output

Type	Normally Open Contact
Contact material	Gold overlay on silver alloy (for low current switching)
Nominal Switching Capacity	250Vac 4A, 30Vdc 4A (resistive)
Maximum Continuous Current	5A (at maximum voltage) resistive
Minimum Switching Capacity	100mVdc, 0.1mA
Maximum Switching Power	1000VA, 120W
Operate time/Release time (at nominal voltage)	10mS/5mS
Maximum operating speed (at rated load)	20 cycles per second
Contact Life (see also life curve)	100,000 @ 4A, 30Vdc 30,000 @ 5A, 250Vac

Mechanical life

Mechanical life	20,000,000 operations
-----------------	-----------------------

Isolation

Initial breakdown voltage	Between open contacts	750Vac
	Between contacts & coil	2000Vac
Surge Strength		4000V

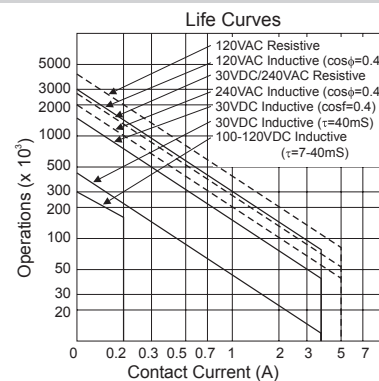
General

Terminal width		6mm
Width across rail		76mm
Height on rail	TS32	68mm
	TS35 x 7.5	63mm
	TS35 x 15	71mm
Operating temperature range		-40°C to +60°C
Conductor size	Solid	0.5 to 4.0mm ²
	Flexible	0.5 to 2.5mm ²

5-15Vdc logic (24Vdc)

5-15Vdc logic (24Vdc)	<0.4mA (7mA)
Operating Current (A or B)	<0.4mA (7mA)
Relay Drop-out current @ 20°C	5.5mA
Relay Pick-up current @ 20°C	12.5mA
Type	Normally Open Contact
Contact material	Gold overlay on silver alloy (for low current switching)
Nominal Switching Capacity	250Vac 4A, 30Vdc 4A (resistive)
Maximum Continuous Current	5A (at maximum voltage) resistive
Minimum Switching Capacity	100mVdc, 0.1mA
Maximum Switching Power	1000VA, 120W
Operate time/Release time (at nominal voltage)	10mS/5mS
Maximum operating speed (at rated load)	20 cycles per second
Contact Life (see also life curve)	100,000 @ 4A, 30Vdc 30,000 @ 5A, 250Vac

Installation



General

Warning: to be installed/maintained by qualified personnel as per instructions, or module safety may be compromised.

Design for IEC664 Installation Category II use.

Cleaning

Wipe only with a damp cloth (remove power before cleaning).

Location

To be installed in a metal enclosure.

Ordering Information

MC5R Ordering

MC5R Single NO Relay	7901580000
----------------------	------------

Accessories

End Plate	AP	7940005681
End Brackets	EW(TS35)	0383560000
	EWK(TS32)	0206160000

Cross Connection Parts

Insulated	2 pole	0482700000
	3 pole	0482800000
	4 pole	0482900000
Uninsulated	75 pole straight	0535200000
	75 pole angled	0526400000

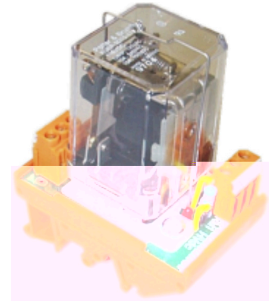
Mounting rail

TS32	0122800000
TS35 x 7.5	0383400000
TS35 x 15	0236400000

RSM1 - High Voltage DC Relay 150Vdc

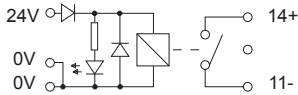
Features

- High Voltage DC switching: 150Vdc
- Up to 10A switching
- N/O, Dual N/O and Dual C/O versions
- Magnetically assisted arc suppression
- Combifoot housing: TS32 & TS35
- 2200V isolation
- Plug-in replaceable relay
- Double input 0V terminals for increased reliability
- LED relay state indication
- Input diode protection
- Coil back-EMF diode protection

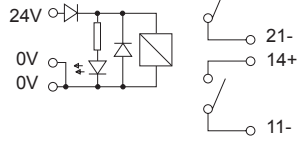


Circuit diagram

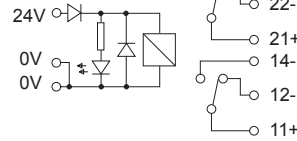
7905880000



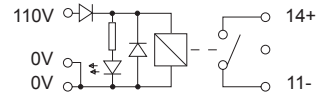
7905890000



7905900000



7905910000



Recommended current flow direction for Arc suppression

Technical Data

Inputs	1 x N/O	2 x N/O	2 x C/O	1 x N/O
Operating Voltage range (typical)	24Vdc	24Vdc	24Vdc	110Vdc
Operating Current (typical)	57mA	80mA	80mA	15mA
Nominal Input operating range	±25%			
Output	1 x NO	2 x NO	2 x C/O	1 x NO
Output Arrangement	10A	5A	3A	10A
Max. switching current (resistive)	Silver Alloy (Cadmium free)			
Contact material	10A			
Maximum Switching Current (resistive)	150Vdc / 240Vac			
Maximum Switching Voltage	15mS excluding bounce			
Operate Time (at nominal voltage)	10mS excluding bounce			
Release Time (at nominal voltage)	6 operations per minute			
Maximum operating speed (at rated load)	100,000 operations			
Contact Life	2200Vrms			
Isolation	45mm			
Contact to coil	70mm			
General	91mm			
Terminal width	86mm			
Width across rail	94mm			
Height on rail	0°C to 70°C			
	TS32			
	TS35 x 7.5			
	TS35 x 15			
Operating temperature range	0.5 to 4.0mm ²			
Conductor size	Solid			
	Flexible			
	0.5 to 2.5mm ²			

Installation



General

Warning: to be installed/maintained by qualified personnel as per instructions, or module safety may be compromised.

Design for IEC664 Installation Category II use.

Cleaning

Wipe only with a damp cloth (remove power before cleaning).

Location

To be installed in a metal enclosure.

Ordering Information

RSM1 Ordering		
Nom. Volt.	Contacts	Cat. No.
24Vdc	1 x N/O	7905880000
24Vdc	2 x N/O	7905890000
24Vdc	2 x C/O	7905900000
110Vac	1 x N/O	7905910000
Mounting rail		
TS32		0122800000
TS35 x 7.5		0383400000
TS35 x 15		0236400000

Solenoid Driver - Single Channel Solid State Relay

Features

- Low Cost
- Compact 11.2mm wide housing
- Wide range (10-30Vdc input)
- Dual DIN rail mount
- 4000V isolation
- 3A AC/DC output
- LED relay state indication
- Coil back-EMF diode protection

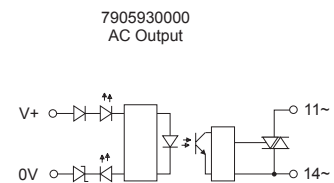
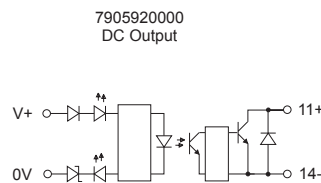
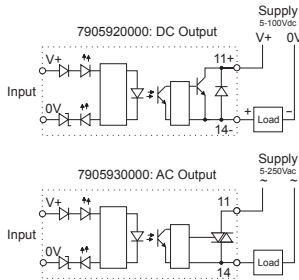


Circuit diagram

Connection diagram

Circuit diagram 7905920000

Circuit Diagram 7905930000



Technical Data

Inputs

Operating Voltage range (typical)
Nominal Operating Current

Output

Output switching voltage (maximum)
Max. switching capacity (up to 50°C)

Minimum output
On state voltage
Output leakage current
Peak surge current
Cut off frequency

Rise time /Fall time

Isolation

Surge Strength

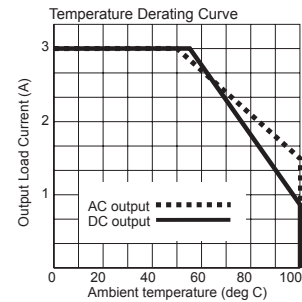
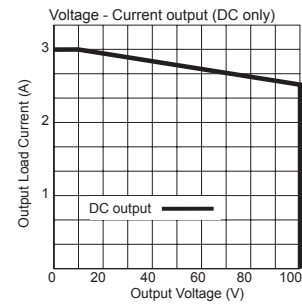
General

Terminal width
Width across rail
Height on rail
Operating temperature range
Storage temperature range
Conductor size

7905920000

10-30Vdc	7905930000	10-30Vdc
25mA		12mA
Note: unit output will not operate to saturation below 10V		
100Vdc		250Vrms (47-70Hz)
3A		3A
Refer to current and temperature derating curves		
50mA, 5V		50mA, 5V
1.7V max		1.7V max.
1.5mA max.		7mA max.
9A (50µS)		30A (1 cycle)
2kHz		20Hz limited by AC triac activation
500µS/200µS		8.3mS / 8.3mS
4000Vrms		
11.2mm		70mm
		56mm
		51mm
		59mm
-30... +100°C (refer to derating curves)		
-30... +100°C		
0.5 to 4.0mm ²		
0.5 to 2.5mm ²		

Installation



General

Warning: to be installed/maintained by qualified personnel as per instructions, or module safety may be compromised.
Design for IEC664 Installation Category II use.

Cleaning

Wipe only with a damp cloth (remove power before cleaning).

Location

To be installed in a metal enclosure.

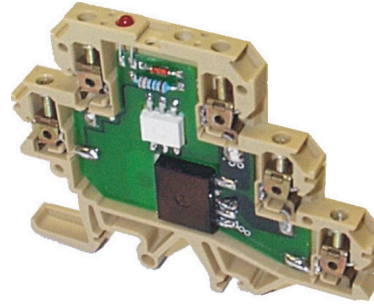
Ordering Information

RSO1 24VDC I/P: AC Output	7905930000
RSO1 24VDC I/P: DC Output	7905920000

MC50 Solenoid Driver 10A

Features

- 10A @ 5-34Vdc inductive switch
- High Side High Current Power Switch
- Ultra compact 6mm wide 'Combifoot' housing suits TS32 & TS35
- 4000Vrms isolation
- LED relay state indication
- Reverse polarity diode protection
- Input diode protection
- Load EMF protected

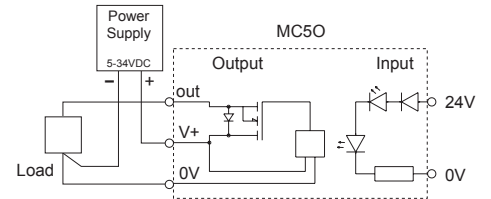


Circuit diagram

Technical Data

Input		
Input Voltage Range	10.5 to 28Vdc	
Operating Current	5.0mA @ 24Vdc	
Output		
Type	High Side MOSFET Switch	
Output Resistance (on state)	Less than 10mΩ	
Nominal Switching Voltage	5 to 34Vdc	
Maximum Continuous Current	10A inductive	
Use with Fuse/Circuit Breaker (recommended)	15A (65V) Slow Blow, breaking capacity 150A min	
Operate time (at nom. voltage)	1mS approx.	
Release time (at nom. voltage)	1mS max.	
Max. operating speed (50% mark space ratio)	100Hz (6000 operations per minute)	
Isolation		
Surge Strength	4000V	
General		
Terminal width	6mm	
Width across rail	76mm	
Height on rail	TS32	68mm
	TS35 x 7.5	63mm
	TS35 x 15	71mm
Operating temperature range	-40°C to +60°C	
Conductor size	Solid	0.5 to 4.0mm ²
	Flexible	0.5 to 2.5mm ²
EMC / LVD	EN50081-1, EN50082-1 / EN61010-1	

Installation



General

Warning: to be installed/maintained by qualified personnel as per instructions, or module safety may be compromised.
Design for IEC664 Installation Category II use.

Cleaning

Wipe only with a damp cloth (remove power before cleaning).

Location

To be installed in a metal enclosure.

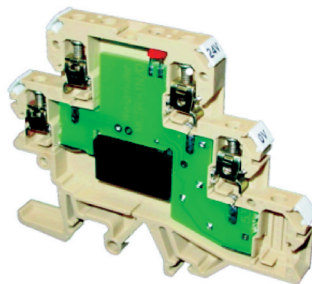
Ordering Information

Solenoid Driver 5-34 V, 10A		7901690001
Accessories		
End Plate	AP	7940005681
End Brackets	EW(TS35)	0383560000
	EWK(TS32)	0206160000
Cross Connection Parts		
Insulated	2 pole	0482700000
	3 pole	0482800000
	4 pole	0482900000
Uninsulated	75 pole straight	0535200000
	75 pole angled	0526400000
Mounting rail		
TS32		0122800000
TS35 x 7.5		0383400000
TS35 x 15		0236400000

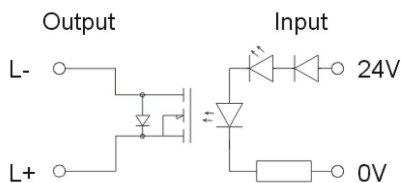
MC50 Solenoid Driver 1A up to 200Vdc

Features

- 1A@5-200Vdc resistive & inductive switch
- High Voltage DC Switch
- Ultra compact 6mm wide 'Combifoot' housing suits TS32 & TS35
- 2500V isolation
- LED relay state indication
- Input diode protection



Circuit diagram



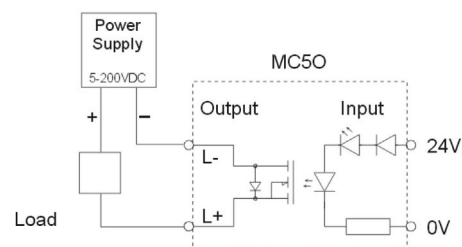
Mounting.



Technical Data

Input	
Input Voltage Range	10.5 to 28Vdc
Operating Current	11.5mA @ 24Vdc
Output	
Type	MOSFET Switch
Output Resistance (on state)	0.34 Ω
Nominal Switching Voltage	5 to 200Vdc
Maximum Continuous Current	1A resistive or inductive
Operate time (at nom. voltage)	1mS approx.
Release time (at nom. voltage)	0.1mS max.
Max. operating speed (50% mark space ratio)	1Hz (60 operations per minute)
Isolation	
Surge Strength	2500V
General	
Terminal width	6mm
Width across rail	76mm
Height on rail	TS32 68mm
	TS35 x 7.5 63mm
	TS35 x 15 71mm
Operating temperature range	-40°C to +60°C
Conductor size	Solid 0.5 to 4.0mm ²
	Flexible 0.5 to 2.5mm ²

Installation



General

Warning: to be installed/maintained by qualified personnel as per instructions, or module safety may be compromised.

Design for IEC664 Installation Category II use.

Cleaning

Wipe only with a damp cloth (remove power before cleaning).

Location

To be installed in a metal enclosure.

Ordering Information

MC50 Solenoid Driver 1A 200 VDC **7901490001**

Accessories

End Plate	AP	7940005681
End Brackets	EW(TS35) EWK(TS32)	0383560000 0206160000

Cross Connection Parts

Insulated	2 pole	0482700000
	3 pole	0482800000
	4 pole	0482900000
Uninsulated	75 pole straight	0535200000
	75 pole angled	0526400000

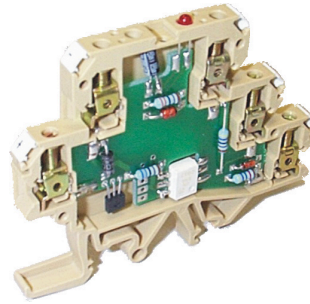
Mounting rail

TS32	0122800000
TS35 x 7.5	0383400000
TS35 x 15	0236400000

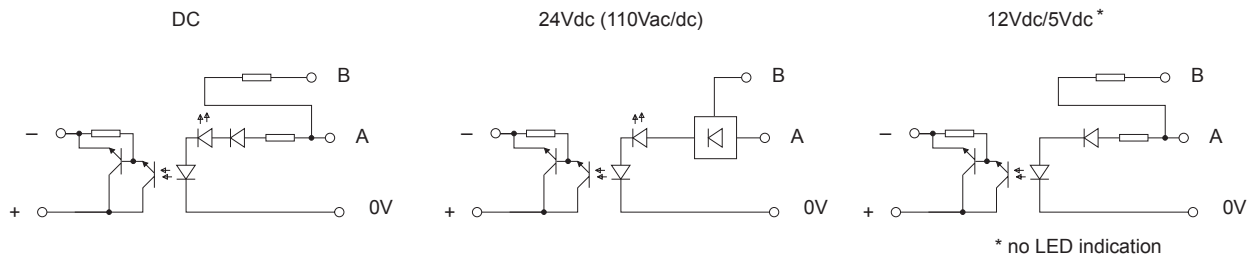
MC50 Dual Voltage

Features

- Dual Input Voltage Solid State Relay
- Ultra compact 6mm wide 'Combifoot' housing suits TS32 & TS35
- 4000Vrms isolation
- LED relay state indication
- Input diode protection



Circuit diagram



Technical Data

Input A Nominal Voltage (Input B nominal Voltage)	12Vdc (48Vdc)	24Vdc (48Vdc)	110Vac/dc (24Vdc)	5Vdc (12Vdc)
Nominal Operating Current (typical)	5mA (5mA)	5mA (5mA)	5mA (4mA)	6mA (7mA)
Input voltage variations	±10% (±10%)			
Protection	Reverse polarity diode on DC inputs only			
Output				
Type	Open Collector NPN Transistor			
Maximum Switching Current	250mA @ 60Vdc			
Voltage Drop at max. load current	<2V			
Switching Times: on A (B)	20µS (125µS)	40µS (700µS)	10mS (30µS)	20µS (25µS)
Switching Times: off A (B)	1.5mS (1.5mS)	30mS (30mS)	20mS (500µS)	250µS (250µS)
Max. operating speed (50% mark space ratio)	100Hz (100Hz)	20Hz (20Hz)	10Hz (100Hz)	100Hz (100Hz)
Isolation				
Surge Strength	4000V (1 min)			
General				
Terminal width	6mm			
Width across rail	76mm			
Height on rail	TS32	68mm		
	TS35 x 7.5	63mm		
	TS35 x 15	71mm		
Operating temperature range	-40°C to +60°C			
Conductor size	Solid	0.5 to 4.0mm ²		
	Flexible	0.5 to 2.5mm ²		

Installation

Mounting.



General

Warning: to be installed/maintained by qualified personnel as per instructions, or module safety may be compromised.
Design for IEC664 Installation Category II use.

Cleaning

Wipe only with a damp cloth (remove power before cleaning).

Location

To be installed in a metal enclosure.

Ordering Information

MC50 12/24 VDC	7906270000
MC50 24/48 VDC	7906280000
MC50 24 VDC / 110 VAC	7906290000
MC50 5/12 VDC	7906300000

Accessories

End Plate	AP	7940005681
End Brackets	EW(TS35) EWK(TS32)	0383560000 0206160000

Cross Connection Parts

Insulated	2 pole	0482700000
	3 pole	0482800000
	4 pole	0482900000
Uninsulated	75 pole straight	0535200000
	75 pole angled	0526400000

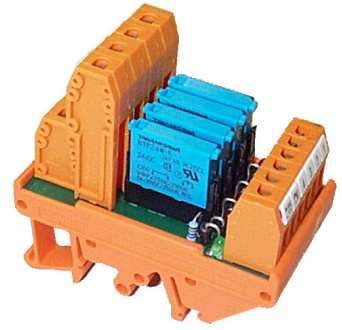
Mounting rail

TS32	0122800000
TS35 x 7.5	0383400000
TS35 x 15	0236400000

RMS - 4 Channel Minature Relay

Features

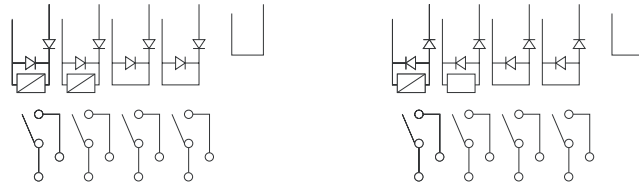
- 4 Channel
- Common inputs for reduced wiring
- Compact 40mm width (10mm per ch.)
- Gold overlay normally open contact
- 0.1mA to 4A 240Vac (Resistive)
- Combifoot housing: TS32 & TS35
- Plug-in relays
- 4000Vrms isolation
- LED Relay state indication
- Reverse polarity diode protection
- Coil back-EMF diode protection



Circuit diagram

Mounting

1 Normally Open Contact per channel



Technical Data

Input

Nominal Operating Voltage	12Vdc	24Vdc
Nominal Operating Current	15mA	7mA
Relay Drop-out current	2.5mA @ 20°C	5.5mA @ 20°C
Relay Pick-up current	11mA @ 20°C	12.5mA @ 20°C

Output

Type	1 Normally Open Contact per channel	
Contact material	Gold plated silver alloy (cadmium free)	
Nominal Switching Capacity	250Vac 4A, 30Vdc 4A (resistive)	
Maximum Continuous Current	5A (at maximum voltage) resistive	
Minimum Switching Capacity	100mVdc, 0.1mA	
Maximum Switching Power	1000VA, 120W	
Operate time/Release time (at nominal voltage)	10mS/5mS	
Maximum operating frequency (at rated load)	20Hz	
Contact Life	Refer to life curves	
Mechanical life	2,000,000 operations	

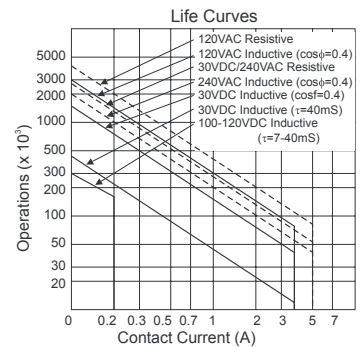
Isolation

Initial breakdown voltage	Between open contacts	750Vac
	Between contacts & coil	2000Vac
Surge Strength		4000V

General

Terminal width		40mm
Width across rail		70mm
Height on rail	TS32	69mm
	TS35 x 7.5	64mm
	TS35 x 15	72mm
Operating temperature range		-40°C to +60°C
Conductor size	Solid	0.5 to 4.0mm ²
	Flexible	0.5 to 2.5mm ²
EMC / LVD		EN50081-1, EN50082-1 / EN61010-1

Installation



General

Warning: to be installed/maintained by qualified personnel as per instructions, or module safety may be compromised.

Design for IEC664 Installation Category II use.

Cleaning

Wipe only with a damp cloth (remove power before cleaning).

Location

To be installed in a metal enclosure.

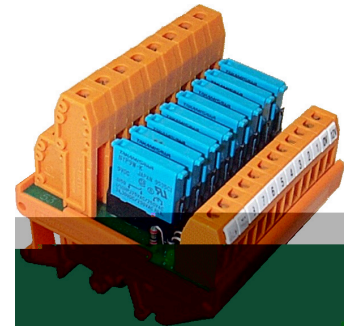
Ordering Information

RMS 4-Channel		
Nom. Volt.	Common -ve	Common +ve
12Vdc	7906320000	7906330000
24Vdc	7906380000	7906390000
Mounting rail		
TS32		0122800000
TS35 x 7.5		0383400000
TS35 x 15		0236400000

RMS - 8 Channel Miniature Relay

Features

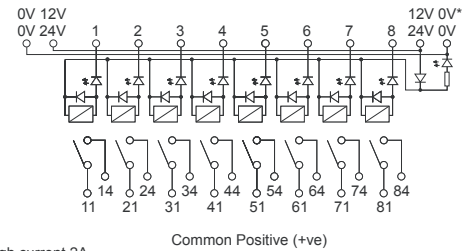
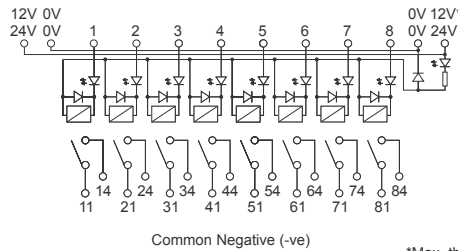
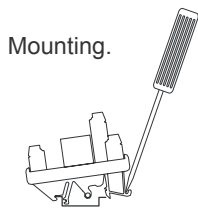
- 8 Channel
- Common inputs for reduced wiring
- Compact 70mm width (8.75mm per ch.)
- Gold overlay normally open contact
- 0.1mA to 4A 240Vac (Resistive)
- Combifoot housing: TS32 & TS35
- Plug-in relays
- 4000V isolation
- LED Relay state indication
- Reverse polarity diode protection
- Coil back-EMF diode protection



Circuit diagram

Mounting

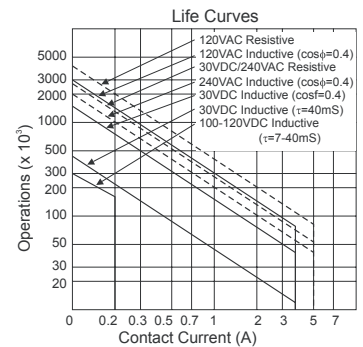
1 Normally Open Contact per channel



Technical Data

Input		12Vdc	24Vdc
Nominal Operating Voltage		12Vdc	24Vdc
Nominal Operating Current		15mA	7mA
Relay Drop-out current		2.5mA @ 20°C	5.5mA @ 20°C
Relay Pick-up current		11mA @ 20°C	12.5mA @ 20°C
Output			
Type		1 Normally Open Contact per channel	
Contact material		Gold plated silver alloy (cadmium free)	
Nominal Switching Capacity		250Vac 4A, 30Vdc 4A (resistive)	
Maximum Continuous Current		5A (at maximum voltage) resistive	
Minimum Switching Capacity		100mVdc, 0.1mA	
Maximum Switching Power		1000VA, 120W	
Operate time/Release time (at nominal voltage)		10ms/5ms	
Maximum operating frequency (at rated load)		20Hz	
Contact Life		Refer to life curves	
Mechanical life		2,000,000 operations	
Isolation			
Initial breakdown voltage	Between open contacts	750Vac	
	Between contacts & coil	2000Vac	
Surge Strength		4000V	
General			
Terminal width		70mm	
Width across rail		70mm	
Height on rail	TS32	69mm	
	TS35 x 7.5	64mm	
	TS35 x 15	72mm	
Operating temperature range		-40°C to +60°C	
Conductor size	Solid	0.5 to 4.0mm ²	
	Flexible	0.5 to 2.5mm ²	
EMC / LVD		EN50081-1, EN50082-1 / EN61010-1	

Installation



General
Warning: to be installed/maintained by qualified personnel as per instructions, or module safety may be compromised.
 Design for IEC664 Installation Category II use.
Cleaning
 Wipe only with a damp cloth (remove power before cleaning).
Location
 To be installed in a metal enclosure.

Ordering Information

RMS 8-Channel		
Nom. Volt.	Common -ve	Common +ve
12Vdc	7906340000	7906350000
24Vdc	7906400000	7906410000
Mounting rail		
TS32		0122800000
TS35 x 7.5		0383400000
TS35 x 15		0236400000

RMS - 16 Channel Miniature Relay

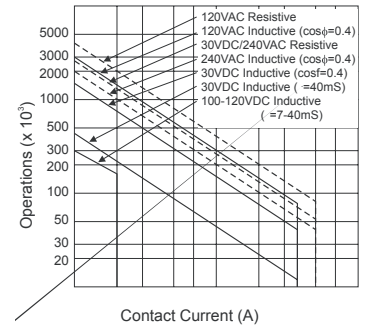
Features

- 16 Channel
- Common inputs for reduced wiring
- Compact 130mm width (8.1mm per ch.)
- Gold overlay normally open contact
- 0.1mA to 4A 240Vac (Resistive)
- Combifoot housing: TS32 & TS35
- Plug-in relays
- 4000V isolation
- LED Relay state indication
- Reverse polarity diode protection
- Coil back-EMF diode protection

Technical Data

Input		
Nominal Operating Voltage		12Vdc 24Vdc
Nominal Operating Current		15mA 7mA
Relay Drop-out current		2.5mA @ 20°C 5.5mA @ 20°C
Relay Pick-up current		11mA @ 20°C 12.5mA @ 20°C
Output		
Type		1 Normally Open Contact per channel
Contact material		Gold plated silver alloy (cadmium free)
Nominal Switching Capacity		250Vac 4A, 30Vdc 4A (resistive)
Maximum Continuous Current		5A (at maximum voltage) resistive
Minimum Switching Capacity		100mVdc, 0.1mA
Maximum Switching Power		1000VA, 120W
Operate time/Release time (at nominal voltage)		10mS/5mS
Maximum operating frequency (at rated load)		20Hz
Contact Life		Refer to life curves
Mechanical life		2,000,000 operations
Isolation		
Initial breakdown voltage	Between open contacts	750Vac
	Between contacts & coil	2000Vac
Surge Strength		4000V
General		
Terminal width		130mm
Width across rail		70mm
Height on rail	TS32	69mm
	TS35 x 7.5	64mm
	TS35 x 15	72mm
Operating temperature range		-40°C to +60°C
Conductor size	Solid	0.5 to 4.0mm ²
	Flexible	0.5 to 2.5mm ²
EMC / LVD		EN50081-1, EN50082-1 / EN61010-1

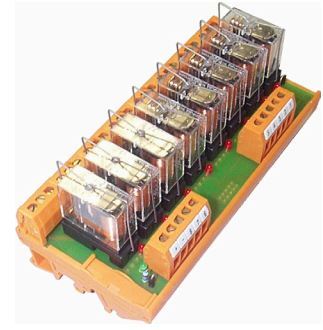
Installation



RSM - 8 Channel Relay

Features

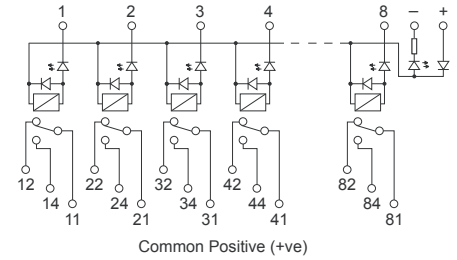
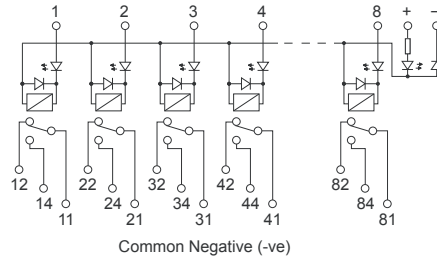
- 8 Channel
- Common inputs for reduced wiring
- 6A, 240Vac / 30Vdc (resistive)
- Combifoot housing: TS32 & TS35
- Plug-in or soldered relays
- 4000V isolation
- LED Relay state indication
- Reverse polarity diode protection
- Coil back-EMF diode protection



Circuit diagram

Mounting

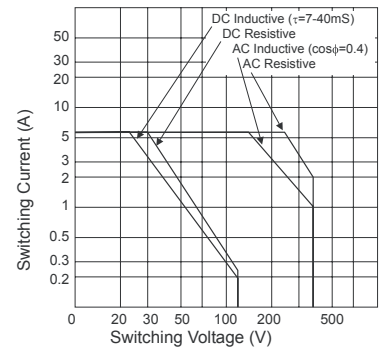
1 Changeover Contact per channel



Technical Data

Input		
Nominal Operating Voltage		24Vdc
Nominal Operating Current		22mA
Nominal Operating Power		0.5W
Output		
Type		1 Change-Over Contact per channel
Contact material		Silver alloy (cadmium free)
Nominal Switching Capacity		250Vac 6A, 30Vdc 6A (resistive)
Maximum Operating voltages		125Vdc / 380Vac
Minimum Switching Capacity		5Vdc, 100mA
Maximum Switching Power		1500VA, 180W
Operate time/Release time (at nominal voltage)		15mS/5mS
Maximum Operating speed (at rated load)		1,800 operations per hour
Contact Life (at rated load)		100,000 operations
Mechanical life		10,000,000 operations
Isolation		
Initial breakdown voltage	Between open contacts	750Vac
	Between contacts & coil	2000Vac
Surge Strength		5000V (1 min)
General		
Terminal width		295mm
Width across rail		70mm
Height on rail	TS32	84mm
	TS35 x 7.5	79mm
	TS35 x 15	86mm
Operating temperature range		-40°C to +60°C
Conductor size	Solid	0.5 to 4.0mm ²
	Flexible	0.5 to 2.5mm ²
EMC / LVD		EN50081-1, EN50082-1 / EN61010-1

Installation



General
Warning: to be installed/maintained by qualified personnel as per instructions, or module safety may be compromised.
 Design for IEC664 Installation Category II use.
Cleaning
 Wipe only with a damp cloth (remove power before cleaning).
Location
 To be installed in a metal enclosure.

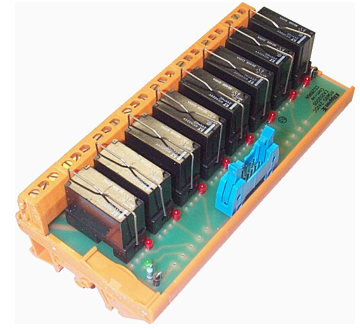
Ordering Information

RSM 8-Channel		
Relay type	Common -ve	Common +ve
Plug-in	7906490000	7906510000
Mounting rail		
TS32		0122800000
TS35 x 7.5		0383400000
TS35 x 15		0236400000

RSM - 8 Channel Relay with ribbon interface

Features

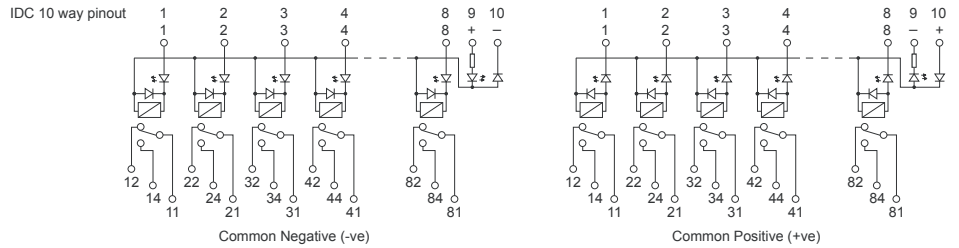
- 8 Channel
- Ribbon interface for reduced wiring
- 6A, 240Vac / 30Vdc (resistive)
- Combifoot housing: TS32 & TS35
- Plug-in or soldered relays
- 4000V isolation
- LED Relay state indication
- Reverse polarity diode protection
- Coil back-EMF diode protection



Circuit diagram

Mounting

1 Change-Over Contact per channel



Technical Data

Input

Nominal Operating Voltage	24Vdc
Nominal Operating Current	22mA
Nominal Operating Power	0.5W

Output

Type	1 Change-Over Contact per channel
Contact material	Silver alloy (cadmium free)
Nominal Switching Capacity	250Vac 6A, 30Vdc 6A (resistive)
Maximum Operating voltages	125Vdc / 380Vac
Minimum Switching Capacity	5Vdc, 100mA
Maximum Switching Power	1500VA, 180W
Operate time/Release time (at nominal voltage)	15mS/5mS
Maximum Operating speed (at rated load)	1,800 operations per hour
Contact Life (at rated load)	100,000 operations
Mechanical life	10,000,000 operations

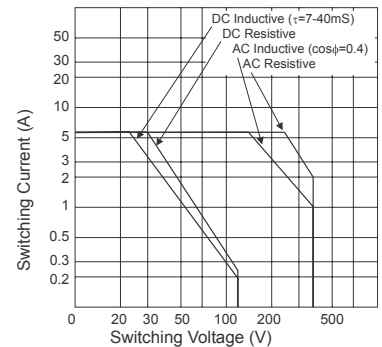
Isolation

Initial breakdown voltage	Between open contacts	750Vac
	Between contacts & coil	2000Vac
Surge Strength		5000V (1 min)

General

Terminal width		145mm
Width across rail		70mm
Height on rail	TS32	84mm
	TS35 x 7.5	79mm
	TS35 x 15	86mm
Operating temperature range		-40°C to +60°C
Conductor size	Solid	0.5 to 4.0mm ²
	Flexible	0.5 to 2.5mm ²
Input termination		IDC 10 way 0.05" Pitch, Male Header (with latch)
EMC / LVD		EN50081-1, EN50082-1 / EN61010-1

Installation



General

Warning: to be installed/maintained by qualified personnel as per instructions, or module safety may be compromised.

Design for IEC664 Installation Category II use.

Cleaning

Wipe only with a damp cloth (remove power before cleaning).

Location

To be installed in a metal enclosure.

Ordering Information

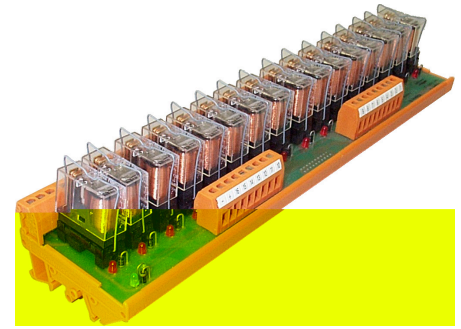
RSM 8-Channel with ribbon interface

Relay type	Common -ve	Common +ve
Plug-in	7906450000	7906470000
Mounting rail		
TS32		0122800000
TS35 x 7.5		0383400000
TS35 x 15		0236400000

RSM - 16 Channel Relay

Features

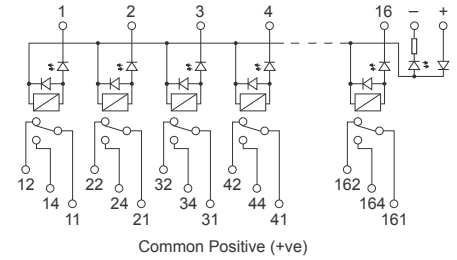
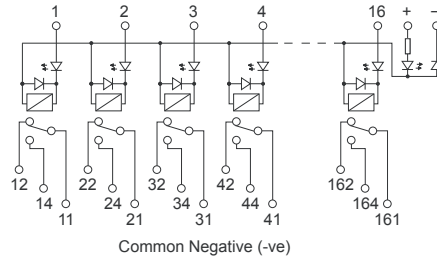
- 16 Channel
- Common inputs for reduced wiring
- 6A, 240Vac / 30Vdc (resistive)
- Combifoot housing: TS32 & TS35
- Plug-in or soldered relays
- 4000V isolation
- LED Relay state indication
- Reverse polarity diode protection
- Coil back-EMF diode protection



Circuit diagram

Mounting

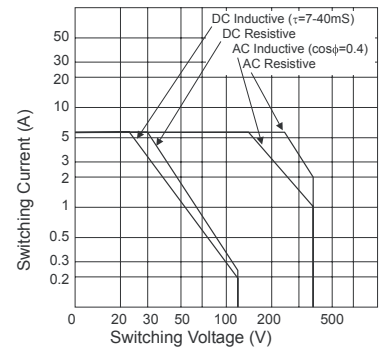
1 Normally Open Contact per channel



Technical Data

Input		
Nominal Operating Voltage		24Vdc
Nominal Operating Current		22mA
Nominal Operating Power		0.5W
Output		
Type		1 Change-Over Contact per channel
Contact material		Silver alloy (cadmium free)
Nominal Switching Capacity		250Vac 6A, 30Vdc 6A (resistive)
Maximum Operating voltages		125Vdc / 380Vac
Minimum Switching Capacity		5Vdc, 100mA
Maximum Switching Power		1500VA, 180W
Operate time/Release time (at nominal voltage)		15mS/5mS
Maximum Operating speed (at rated load)		1,800 operations per hour
Contact Life (at rated load)		100,000 operations
Mechanical life		10,000,000 operations
Isolation		
Initial breakdown voltage	Between open contacts	750Vac
	Between contacts & coil	2000Vac
Surge Strength		5000V (1 min)
General		
Terminal width		295mm
Width across rail		70mm
Height on rail	TS32	84mm
	TS35 x 7.5	79mm
	TS35 x 15	86mm
Operating temperature range		-40°C to +60°C
Conductor size	Solid	0.5 to 4.0mm ²
	Flexible	0.5 to 2.5mm ²
EMC / LVD		EN50081-1, EN50082-1 / EN61010-1

Installation



General
Warning: to be installed/maintained by qualified personnel as per instructions, or module safety may be compromised.
 Design for IEC664 Installation Category II use.
Cleaning
 Wipe only with a damp cloth (remove power before cleaning).
Location
 To be installed in a metal enclosure.

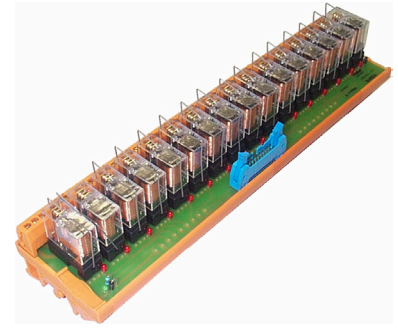
Ordering Information

RSM 16-Channel		
Relay type	Common -ve	Common +ve
Plug-in	7906570000	7906590000
Mounting rail		
TS32		0122800000
TS35 x 7.5		0383400000
TS35 x 15		0236400000

RSM - 16 Channel Relay with Ribbon Interface

Features

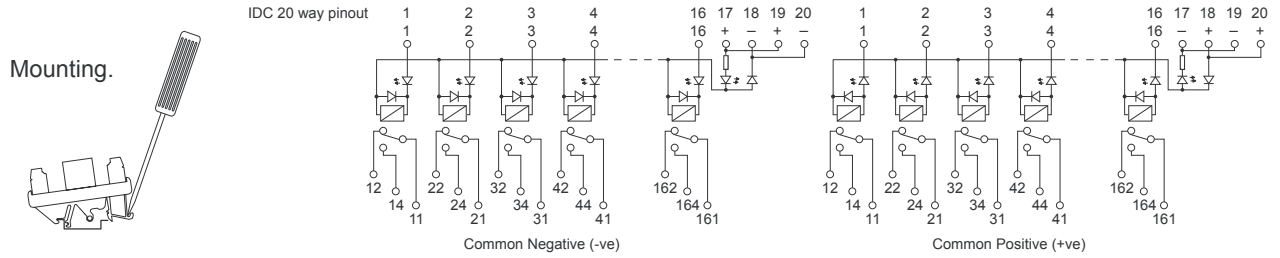
- 16 Channel
- Ribbon interface for reduced wiring
- 6A, 240Vac / 30Vdc (resistive)
- Combifoot housing: TS32 & TS35
- Plug-in or soldered relays
- 4000V isolation
- LED Relay state indication
- Reverse polarity diode protection
- Coil back-EMF diode protection



Circuit diagram

Mounting

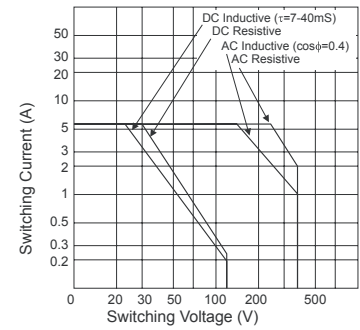
1 Normally Open Contact per channel



Technical Data

Input		
Nominal Operating Voltage		24Vdc
Nominal Operating Current		22mA
Nominal Operating Power		0.5W
Output		
Type		1 Change-Over Contact per channel
Contact material		Silver alloy (cadmium free)
Nominal Switching Capacity		250Vac 6A, 30Vdc 6A (resistive)
Maximum Operating voltages		125Vdc / 380Vac
Minimum Switching Capacity		5Vdc, 100mA
Maximum Switching Power		1500VA, 180W
Operate time/Release time (at nominal voltage)		15ms/5ms
Maximum Operating speed (at rated load)		1,800 operations per hour
Contact Life (at rated load)		100,000 operations
Mechanical life		10,000,000 operations
Isolation		
Initial breakdown voltage	Between open contacts	750Vac
	Between contacts & coil	2000Vac
Surge Strength		5000V (1 min)
General		
Terminal width		295mm
Width across rail		70mm
Height on rail	TS32	84mm
	TS35 x 7.5	79mm
	TS35 x 15	86mm
Operating temperature range		-40°C to +60°C
Conductor size	Solid	0.5 to 4.0mm ²
	Flexible	0.5 to 2.5mm ²
Input termination		IDC 20 way 0.05" Pitch, Male Header (with latch)
EMC / LVD		EN50081-1, EN50082-1 / EN61010-1

Installation



General

Warning: to be installed/maintained by qualified personnel as per instructions, or module safety may be compromised.

Design for IEC664 Installation Category II use.

Cleaning

Wipe only with a damp cloth (remove power before cleaning).

Location

To be installed in a metal enclosure.

Ordering Information

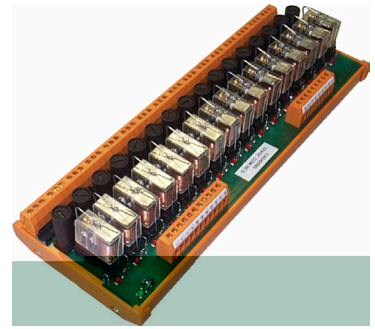
RSM 16-Channel with ribbon interface

Relay type	Common -ve	Common +ve
Plug-in	7906530000	7906550000
Mounting rail		
TS32		0122800000
TS35 x 7.5		0383400000
TS35 x 15		0236400000

RSM - 16 Channel Relay with Fused Output

Features

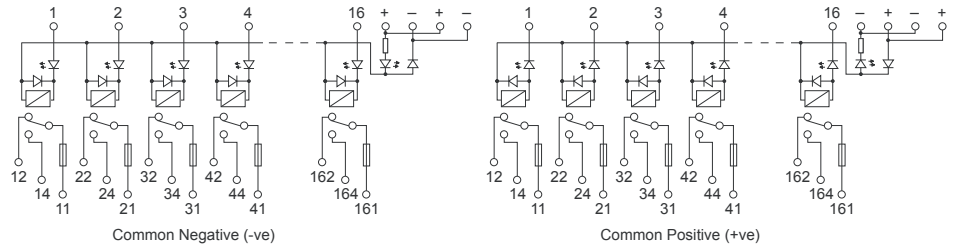
- 16 Channel
- Common inputs for reduced wiring
- Fused outputs
- 6A, 240Vac / 30Vdc (resistive)
- Combifoot housing: TS32 & TS35
- Plug-in or soldered relays
- 4000V isolation
- LED Relay state indication
- Reverse polarity diode protection
- Coil back-EMF diode protection



Circuit diagram

Mounting

1 Change-Over Contact per channel



Technical Data

Input

Nominal Operating Voltage	12Vdc	24Vdc
Nominal Operating Current	50mA	22mA
Nominal Operating Power	0.5W	0.5W

Output

Type	1 Change-Over Contact per channel	
Contact material	Silver alloy (cadmium free)	
Nominal Switching Capacity	250Vac 6A, 30Vdc 6A (resistive)	
Fuse rating	6.3A	
Maximum Operating voltages	125Vdc / 380Vac	
Minimum Switching Capacity	5Vdc, 100mA	
Maximum Switching Power	1500VA, 180W	
Operate time/Release time (at nominal voltage)	15mS/5mS	
Maximum Operating speed (at rated load)	1,800 operations per hour	
Contact Life (at rated load)	100,000 operations	
Mechanical life	10,000,000 operations	

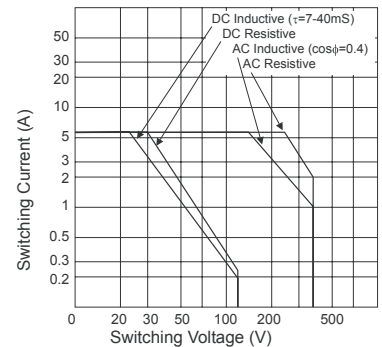
Isolation

Initial breakdown voltage	Between open contacts	750Vac
	Between contacts & coil	2000Vac
Surge Strength		5000V (1 min)

General

Terminal width		295mm
Width across rail		109mm
Height on rail	TS32	84mm
	TS35 x 7.5	79mm
	TS35 x 15	86mm
Operating temperature range		-40°C to +60°C
Conductor size	Solid	0.5 to 4.0mm ²
	Flexible	0.5 to 2.5mm ²
EMC / LVD		EN50081-1, EN50082-1 / EN61010-1

Installation



General

Warning: to be installed/maintained by qualified personnel as per instructions, or module safety may be compromised.

Design for IEC664 Installation Category II use.

Cleaning

Wipe only with a damp cloth (remove power before cleaning).

Location

To be installed in a metal enclosure.

Ordering Information

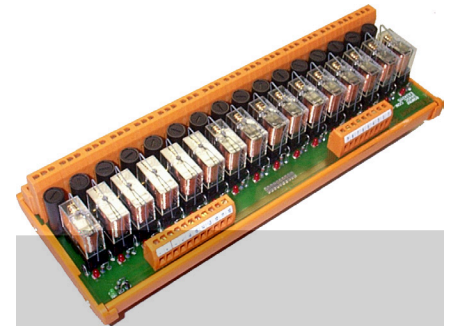
RMS 16-Channel with fused output

Relay type	Common -ve	Common +ve
12Vdc Plug-in	7906650000	7906670000
24Vdc Plug-in	7906640000	7906660000
Mounting rail		
TS32		0122800000
TS35 x 7.5		0383400000
TS35 x 15		0236400000

RSM - 16 Channel Relay with Fused Output and Double Terminals

Features

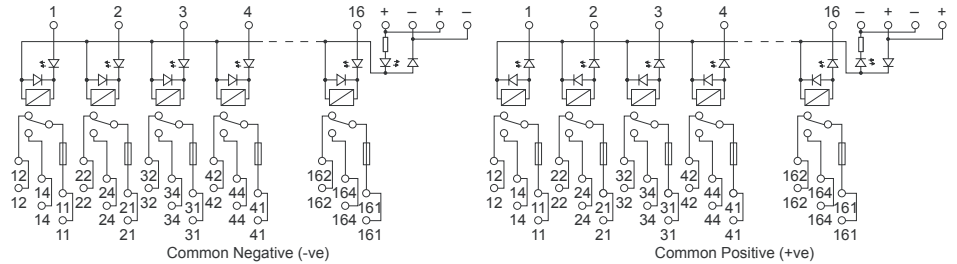
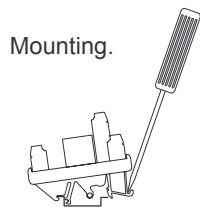
- 16 Channel
- Common inputs for reduced wiring
- Fused outputs
- Double output terminals
- 6A, 240Vac / 30Vdc (resistive)
- Combifoot housing: TS32 & TS35
- Plug-in or soldered relays
- 4000V isolation
- LED Relay state indication
- Reverse polarity diode protection
- Coil back-EMF diode protection



Circuit diagram

Mounting

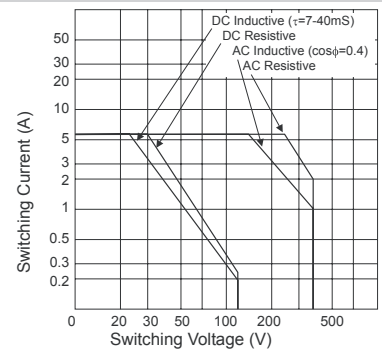
1 Change-Over Contact per channel



Technical Data

Input		
Nominal Operating Voltage	12Vdc	24Vdc
Nominal Operating Current	50mA	22mA
Nominal Operating Power	0.5W	0.5W
Output		
Type	1 Change-Over Contact per channel	
Contact material	Silver alloy (cadmium free)	
Nominal Switching Capacity	250Vac 6A, 30Vdc 6A (resistive)	
Fuse rating	6.3A	
Maximum Operating voltages	125Vdc / 380Vac	
Minimum Switching Capacity	5Vdc, 100mA	
Maximum Switching Power	1500VA, 180W	
Operate time/Release time (at nominal voltage)	15ms/5ms	
Maximum Operating speed (at rated load)	1,800 operations per hour	
Contact Life (at rated load)	100,000 operations	
Mechanical life	10,000,000 operations	
Isolation		
Initial breakdown voltage	Between open contacts	750Vac
	Between contacts & coil	2000Vac
Surge Strength		5000V (1 min)
General		
Terminal width		295mm
Width across rail		109mm
Height on rail	TS32	84mm
	TS35 x 7.5	79mm
	TS35 x 15	86mm
Operating temperature range		-40°C to +60°C
Conductor size	Solid	0.5 to 4.0mm ²
	Flexible	0.5 to 2.5mm ²
EMC / LVD		EN50081-1, EN50082-1 / EN61010-1

Installation



General

Warning: to be installed/maintained by qualified personnel as per instructions, or module safety may be compromised.

Design for IEC664 Installation Category II use.

Cleaning

Wipe only with a damp cloth (remove power before cleaning).

Location

To be installed in a metal enclosure.

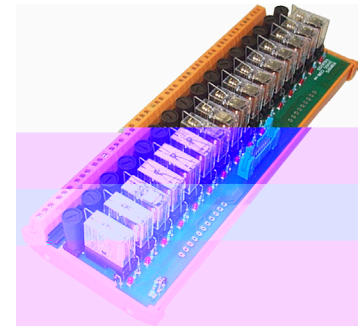
Ordering Information

RSM 16-Channel with fused with double terminals		
Relay type	Common -ve	Common +ve
12Vdc Plug-in	7906730000	7906750000
24Vdc Plug-in	7906720000	7906740000
Mounting rail		
TS32		0122800000
TS35 x 7.5		0383400000
TS35 x 15		0236400000

RSM - 16 Channel Relay with Fused Output and Ribbon Interface

Features

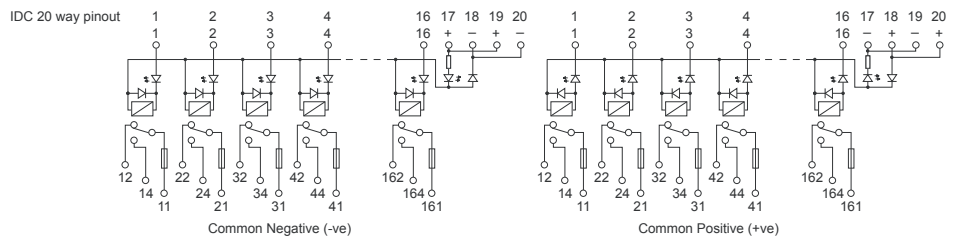
- 16 Channel
- Ribbon interface for reduced wiring
- Fused outputs
- 6A, 240Vac / 30Vdc (resistive)
- Combifoot housing: TS32 & TS35
- Plug-in or soldered relays
- 4000V isolation
- LED Relay state indication
- Reverse polarity diode protection
- Coil back-EMF diode protection



Circuit diagram

Mounting

1 Change-Over Contact per channel



Technical Data

Input

Nominal Operating Voltage	12Vdc	24Vdc
Nominal Operating Current	50mA	22mA
Nominal Operating Power	0.5W	0.5W

Output

Type	1 Change-Over Contact per channel
Contact material	Silver alloy (cadmium free)
Nominal Switching Capacity	250Vac 6A, 30Vdc 6A (resistive)
Fuse Rating	6.3A
Maximum Operating voltages	125Vdc / 380Vac
Minimum Switching Capacity	5Vdc, 100mA
Maximum Switching Power	1500VA, 180W
Operate time/Release time (at nominal voltage)	15ms/5ms
Maximum Operating speed (at rated load)	1,800 operations per hour
Contact Life (at rated load)	100,000 operations
Mechanical life	10,000,000 operations

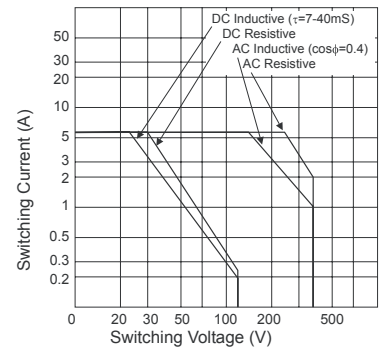
Isolation

Initial breakdown voltage	Between open contacts	750Vac
	Between contacts & coil	2000Vac
Surge Strength		5000V (1 min)

General

Terminal width		295mm
Width across rail		109mm
Height on rail	TS32	84mm
	TS35 x 7.5	79mm
	TS35 x 15	86mm
Operating temperature range		-40°C to +60°C
Conductor size	Solid	0.5 to 4.0mm ²
	Flexible	0.5 to 2.5mm ²
Input termination		IDC 20 way 0.05" Pitch, Male Header (with latch)
EMC / LVD		EN50081-1, EN50082-1 / EN61010-1

Installation



General

Warning: to be installed/maintained by qualified personnel as per instructions, or module safety may be compromised.

Design for IEC664 Installation Category II use.

Cleaning

Wipe only with a damp cloth (remove power before cleaning).

Location

To be installed in a metal enclosure.

Ordering Information

RSM 16-Channel with fused outputs and ribbon interface

Relay type	Common -ve	Common +ve
12Vdc Plug-in	7906810000	7906830000
24Vdc Plug-in	7906800000	7906820000

Mounting rail

TS32	0122800000
TS35 x 7.5	0383400000
TS35 x 15	0236400000

X-ON Electronics

Authorized Distributor

Click to view similar products for [General Purpose Relays](#) category.

Click to view products by [Weidmuller](#) manufacturer.

Other Similar products are found below :

[8501RS14V20](#) [8501RS44V24](#) [8501RSD14P14V51](#) [8501RSD42V53](#) [8501XO40V02](#)
[PBM04U](#) [JQ1AP5V](#) [222290484000](#) [222490244000](#) [JW2SNDC12V](#) [223400244340](#)
[223400244720](#) [K40P364](#) [K41B01](#) [K41C234](#) [K41P332](#) [K43C834](#) [K61B741](#) [K70B881](#)
[K81AA57](#) [KAP11DY24](#) [KB17DG24](#) [LEV200ALANA](#) [KC1612VDC](#) [JC2ASDC24V](#)