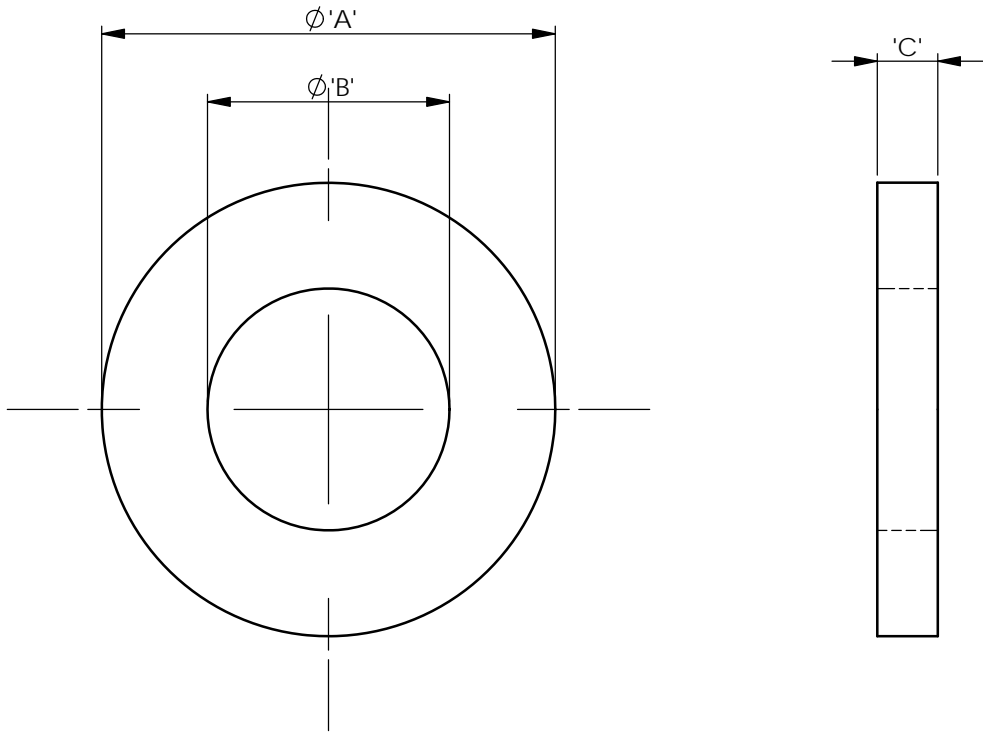


REV.	MODIFICATION.	DATE	DRN
01	NEW DRAWING	19/10/04	NJB
02	ECN2005-075	21/06/05	OW
03	CO2011185	05/08/11	SF



NOTES:

- 1) PART PRODUCED ACCORDING TO DIN-34815.
- ALTERNATE UNITS FOR REFERENCE ONLY

INFORMATION CONTAINED IN THIS DOCUMENT IS CONFIDENTIAL TO RICHCO INTERNATIONAL Co. Ltd. AND MAY NOT BE DISCLOSED OR REPRODUCED IN WHOLE OR PART WITHOUT THEIR WRITTEN CONSENT

PART NUMBER	THREAD	ØA	ØB	C
NWE-34815-M2	M2	4.9(-0.36 +0) [.193(-.014 +0)]	2.5 (-0 +0.18) [.098 (-0 +.007)]	0.35 (±0.05) [.0137 (±.020)]
NWE-34815-M2.5	M2.5	6.5(-0.36 +0) [.256(-.014 +0)]	2.7(-0 +0.18) [.107(-0 +0.18)]	0.5(+0.05) [.020(+.002)]
NWE-34815-M3	M3	7.0(-0.36 +0) [.276(-.014 +0)]	3.2(-0 +0.18) {.126(-0 +.007)}	
NWE-34815-M4	M4	9.0(-0.36 +0) [.355(-.014 +0)]	4.3(-0 +0.18) [.170(-0 +.007)]	0.8(±0.1) [.032(±.004)]
NWE-34815-M5	M5	10.0(-0.36 +0) [.394(-.014 +0)]	5.3(-0 +0.18) [.209 (-0 +.007)]	1.0(±0.1) [.040 (±.004)]
NWE-34815-M6	M6	12.0 (-0.43 +0) [.473 (-.017 +0)]	6.4 (-0 +0.22) [.252(-0 +.009)]	1.6(±0.2) [.063 (±.008)]

RICHCO, INC.
WWW.RICHCO-INC.COM

METRIC GENERAL TOLERANCES ±0.25
ARE PRIMARY UNLESS OTHERWISE STATED
1 DECIMAL PLACE ±
2 DECIMAL PLACES ±
ANGULAR ±1°

IMPERIAL GENERAL TOLERANCES ±0.010
ARE FOR REFERENCE UNLESS OTHERWISE STATED
1 DECIMAL PLACE ±
2 DECIMAL PLACES ±
ANGULAR ±1°

MATERIAL: NYLON 6/6 (RMS-174)		COLOUR: NATURAL	
TITLE: WASHER		PART No: SEE TABLE	
DRG No: 04-119	NPR REF:		SIZE A4
DRN NJB	DATE 19/10/04		CHKD I.C
SCALE NTS	SHEET No 1 OF 1		

X-ON Electronics

Largest Supplier of Electrical and Electronic Components

Click to view similar products for [richco](#) manufacturer:

Other Similar products are found below :

[KLB450ART](#) [RBS-5-BK](#) [RRC-16-9-28-M2](#) [RRH-142-80-150](#) [LEDS2E-8-01](#) [RRC-16-9-28-M1](#) [RT-310-190-222](#) [RLCBSR-10-01](#) [OFST-1-L](#)
[RFS1-15-7-A5](#) [DLCBST-5-01](#) [RT-145-102-80](#) [RSH6-76100-50A](#) [RFP1-34-28-A5](#) [CAT-15-PP-BU](#) [CAT-32-PP](#) [RT-142-64-135](#) [FGPT-92](#)
[MFTH-2-01A-RT-M](#) [RT-290-190-77](#) [BMS-SAX300MM](#) [RRH-110-50-250](#) [SHR-32-6NB](#) [RCP-040-T](#) [LEDS2M-440-01](#) [SHR-C2](#) [CBSS-8-](#)
[01](#) [RRH-120-85-150](#) [RFS1-15-15-A5](#) [RT-280-160-75](#) [MB-1-156](#) [RFS1-17-15-A5](#) [RFS2-34-12-2-A5](#) [RT-175-95-127](#) [RT-290-190-75](#) [RT-](#)
[70-35-40](#) [SNGS-2](#) [SPGSG-2](#) [RT-100-70-50](#) [WSB-2-01A-RT](#) [SP3-4-01](#) [RT-100-70-70](#) [RRH-186-102-286](#) [SHR-32-PPB](#) [VMCGN120-M3-L-](#)
[K](#) [OFHB3-4-19A-RT](#) [RRH-140-90-150](#) [RT-160-120-80](#) [RSFS-450](#) [MSPMST-10-01](#)