

**Series 150 - 1206 Standard**

**OIS-150 970**  
**OIS-150 1020**  
**OIS-150 1050**

preliminary



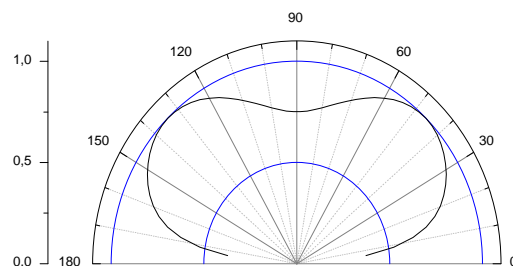
**Features**

- package 1206
- size: 3.2(L) x 1.6(W) x 1.2(H) mm
- circuit substrate: glass laminated epoxy
- devices are ROHS conform
- lead free solderable. soldering pads: gold plated
- taped in 8 mm blister tape
- cathode to transporting perforation
- all devices sorted into luminous intensity classes
- taping: face-up (T) or face-down (TD) possible
- view angle 140°

**Electro-Optical Characteristics**

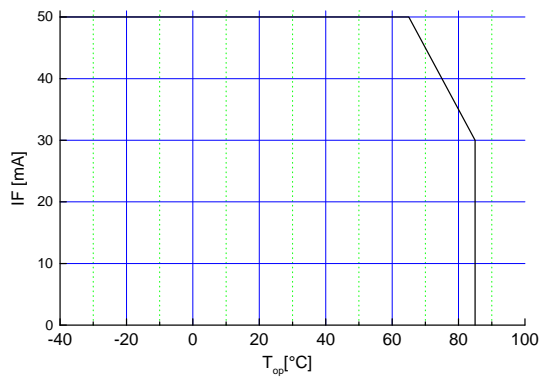
Measured at 50mA, T<sub>a</sub> = 25°C

Parameter	Symbol	Type	Values			Unit
			min	typ	max	
Forward Voltage	V <sub>F</sub>	OIS-150 970	-	1.3	1.5	V
		OIS-150 1020	-	1.2	1.4	
		OIS-150 1050	-	1.2	1.35	
Peak Wavelength	λ <sub>p</sub>	OIS-150 970	-	970	-	nm
		OIS-150 1020	-	1020	-	
		OIS-150 1050	-	1050	-	
Spectral Width	Δλ	OIS-150 970	-	35	-	nm
		OIS-150 1020	-	40	-	
		OIS-150 1050	-	80	-	
Radiant Intensity	I <sub>e</sub>	OIS-150 970	0.9	1.7	-	mW/sr
		OIS-150 1020	1.2	2.1	-	
		OIS-150 1050	0.7	1.2	-	



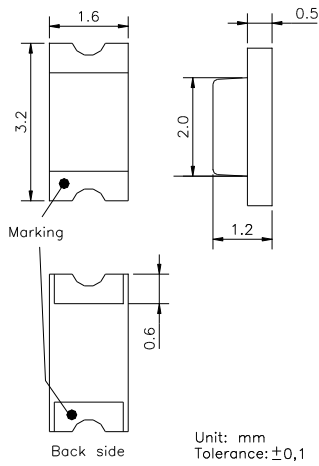
## Absolute Maximum Ratings

Parameter	Symbol	Values		Unit
		min	max	
Forward Current	$I_{F,max}$		50	mA
Forward Current, pulsed $t_p \leq 100\mu s, \tau = 1:10$	$I_{F,p}$		100	mA
Reverse Voltage	$V_R$		5	V
Reverse Current	$I_R$		100	$\mu A$
Thermal Resistance	$R_{th,JA}$		450	K/W
Operating Temperature	$T_{Op}$	-40	+85	$^{\circ}C$
Storage Temperature	$T_{St}$	-40	+85	$^{\circ}C$

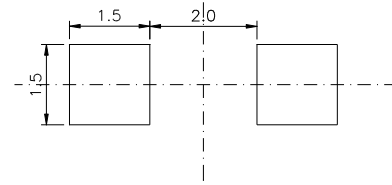


Maximal forward current (DC) characteristic

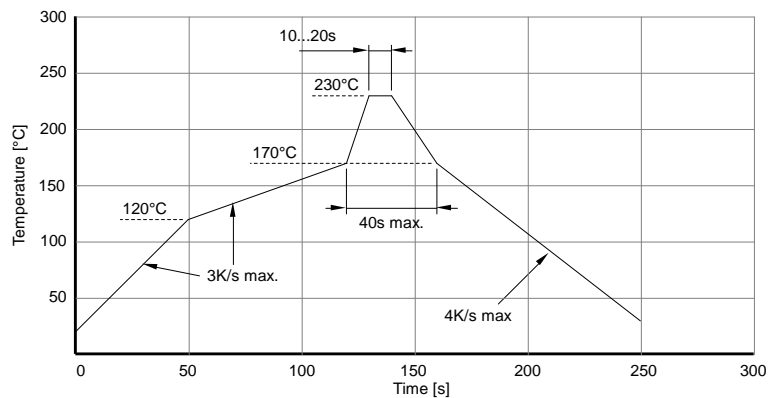
### Outline Drawing



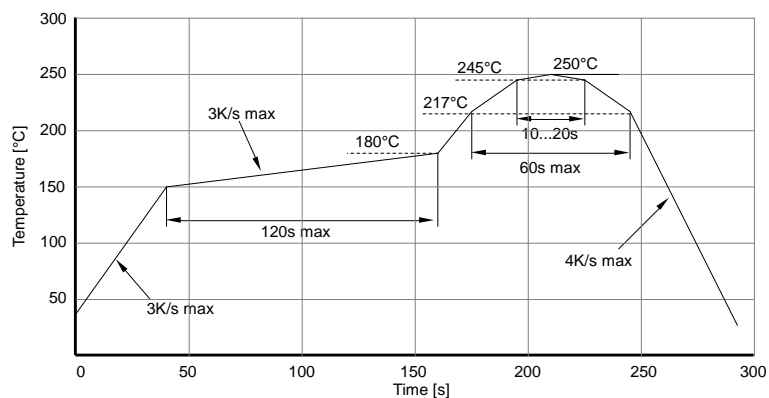
### Recommended Soldering Patterns



### Soldering Conditions



IR reflow  
soldering  
profile



IR reflow  
soldering  
profile for lead  
free soldering

Manual soldering: max power of iron 25W/ 3s/ 300°C

## Ordering Code For Parts

<u>Series</u>	<u>Color</u>	<u>Encapsulation</u>	<u>Packaging</u>
OIS-150	????????	X	?
			T - taped up TD - taped down
		X - uncolored clear	

Type definition, e.g. OIS-150 1020-X-T

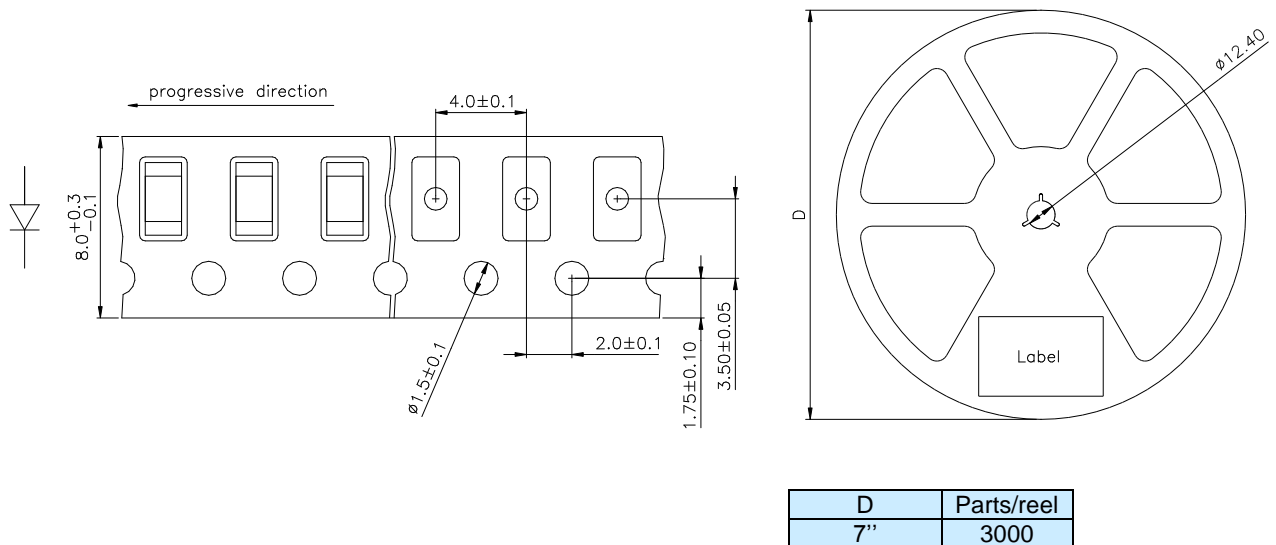
## LED Luminous Intensity Groups And Subgroups [ mW/sr ]

(general information – not this device specific)

C:	0.28	-	0.45	C1:	0.28	-	0.36
				C2:	0.36	-	0.45
D:	0.45	-	0.71	D1:	0.45	-	0.56
				D2:	0.56	-	0.71
E:	0.71	-	1.12	E1:	0.71	-	0.90
				E2:	0.90	-	1.12
F:	1.12	-	1.80	F1:	1.12	-	1.40
				F2:	1.40	-	1.80
G:	1.80	-	2.80	G1:	1.80	-	2.24
				G2:	2.24	-	2.80
H:	2.80	-	4.50	H1:	2.80	-	3.55
				H2:	3.55	-	4.50
J:	4.50	-	7.10	J1:	4.50	-	5.60
				J2:	5.60	-	7.10
K:	7.10	-	11.20	K1:	7.10	-	9.00
				K2:	9.00	-	11.20
L:	11.20	-	18.00	L1:	11.20	-	14.00
				L2:	14.00	-	18.00

**Measured according to CIE 127. All SMD-LEDs are 100% measured and selected on full automated equipment with an accuracy of  $\pm 11\%$ .**

## Tape And Reel Packing



**Packing:** The reel is sealed in special plastic bag with integrate ESD protection ( MIL - STD 81705 ) including a silica dry-pack  
MSL level acc. to IPC/JEDEC J-STD 020D:  
Level 2 for Europe  
Level 2a for all other countries

### Label

Order No.	XXXXXXXXXX	Customer order No.
Type	OIS-150 ?????-??-T	
Intensity group	ZZ	
Charge No.	1122-AAAAAA	11 Week – 22 year – A internal identification
Quantity	9999	

### Attention please:

The information describes the type of component and shall not considered as assured characteristics. Terms of delivery and rights to change reserved. Due to technical requirements components may contain dangerous substances. The data sheet may be changed without prior information; the valid issue will be on our webpage in internet. Parameters can vary in different applications. All operating parameters must be validated for each customer application by the customer. OSA Opto Light does not have the responsibility for the reliability and the degradation behaviour of products made with OSA Opto Light diodes because they depend not only on the diode but also on the conditions of manufacture or design of the final products.

Packaging: Please use the recycling operators known to you.

Components used in life support devices or systems, toys and safety systems must be expressly authorized for such purpose!

## **X-ON Electronics**

Largest Supplier of Electrical and Electronic Components

*Click to view similar products for [osa opto light manufacturer](#):*

Other Similar products are found below :

[OLS 330 MY](#) [EOLD-355-525](#) [EOLD-1550-525](#) [OIS-330-IT940-T](#) [OLS-330GC525-X-T](#) [OIS 150 880](#) [OLS 330 MG 525](#) [OCU 400-UC375](#)  
[OLS-153MSD/GC525-T](#) [OIS-330-740-X-T](#) [OIS-330-IT855-T](#) [OLS 330 EG 525](#) [OIS-150-IT940-T](#) [OLS 330 MB 460](#) [OIS 170 880](#) [OIS 330](#)  
[770](#) [OLS-336BA460-X-TU](#) [OLS 159 SR/G](#)