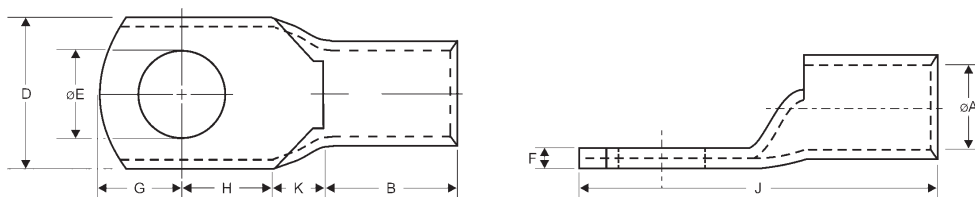




Copper Tube • HD Terminals • Tooling

Copper Tube Terminals 1.5–1000 Sq mm – Straight Entry



All Copper Tube Terminals have a radiused entry

Cable Size sq mm	Stud Size mm dia	Nominal Dimensions mm									Part Number
		ØA	B	D	ØE	F	G	H	J	K	
1.5	3	1.8	5	8	3.2	1	4	5	16	2	D 1.5-3
	4	1.8	5	8	4.2	1	4	5	16	2	D 1.5-4
	5	1.8	5	8	5.2	1	4	5	16	2	D 1.5-5
2.5	3	2.4	7	8	3.2	1	4	5	18	2	D 2.5-3
	4	2.4	7	8	4.2	1	4	5	18	2	D 2.5-4
	5	2.4	7	10	5.2	0.8	5	6	20	2	D 2.5-5
	6	2.4	7	10	6.5	0.8	5	6	20	2	D 2.5-6
4-6	4	3.8	9	10	4.2	1.2	5	6	23	3	D 6-4
	5	3.8	9	10	5.2	1.2	5	6	23	3	D 6-5
	6	3.8	9	12	6.5	1	6	9	27	3	D 6-6
	8	3.8	9	12	8.4	1	6	9	27	3	D 6-8
	10	3.8	9	17	10.5	1.7	11	11	34	3	D 6-10
10	5	4.5	9	12	5.2	1.2	6	7	25	3	D 10-5
	6	4.5	9	12	6.5	1.2	6	7	25	3	D 10-6
	8	4.5	9	12	8.4	1.2	6	9	27	3	D 10-8
	10	4.5	9	19	10.5	1.8	10	10	32	3	D 10-10
	12	4.5	9	19	13	1.8	12	12	37	4	D 10-12
16	5	5.4	12	12	5.2	1.4	7	7	30	4	D 16-5
	6	5.4	12	12	6.5	1.4	7	7	30	4	D 16-6
	8	5.4	12	12	8.4	1.4	7	9	32	4	D 16-8
	10	5.4	12	19	10.5	1.8	10	10	36	4	D 16-10
	12	5.4	12	19	13	1.8	12	12	40	4	D 16-12
25	6	6.8	12	13	6.5	2	7	7	30	4	D 25-6
	8	6.8	12	16	8.4	1.6	10	11	37	4	D 25-8
	10	6.8	12	16	10.5	1.6	10	11	37	4	D 25-10
	12	6.8	12	16	13	1.6	12	11	39	4	D 25-12
35	6	8.2	15	15.3	6.5	2.4	9	9	38	5	D 35-6
	8	8.2	15	15.3	8.4	2.4	9	9	38	5	D 35-8
	10	8.2	15	18	10.5	2	10	11	38	5	D 35-10
	12	8.2	15	18	13	2	10	11	38	5	D 35-12
50	6	9.5	16	18	6.5	2.9	10	11	43	6	D 50-6
	8	9.5	16	18	8.4	2.9	10	11	43	6	D 50-8
	10	9.5	16	18	10.5	2.9	10	11	43	6	D 50-10
	12	9.5	16	18	13	2.9	10	11	43	6	D 50-12
70	6	11.2	18	21	6.5	3.5	12	13	50	7	D 70-6
	8	11.2	18	21	8.4	3.5	12	13	50	7	D 70-8
	10	11.2	18	21	10.5	3.5	12	13	50	7	D 70-10
	12	11.2	18	21	13	3.5	12	13	50	7	D 70-12
	14	11.2	18	28	15	2.2	16	16	57	7	D 70-14
	16	11.2	18	28	17	2.2	16	16	57	7	D 70-16

X-ON Electronics

Largest Supplier of Electrical and Electronic Components

Click to view similar products for [davico](#) manufacturer:

Other Similar products are found below :

[Davico](#)