

Central tags
2 hole mounting

List Numbers and Dimensions

TF 125-200A rating Extended Motor Range 200M250 & 200M315†

178-452
+
178-453

Rating	List Numbers
Amp	For ordering purposes
125	TF125
160	TF160
200	TF200
200M250	TF200M250†
200M315	TF200M315†

Dimensions in millimetres & inches

	A	B	D	E	F	G	H	J	M
						Fixing Centres			
mm	70 00	34 90	136 50	19 10	3 20	111 00	8 70	11 90	79 40
inches	2 $\frac{3}{4}$	1 $\frac{3}{8}$	5 $\frac{3}{8}$	$\frac{3}{4}$	$\frac{1}{8}$	4 $\frac{3}{8}$	1 $\frac{1}{32}$	1 $\frac{5}{32}$	3 $\frac{1}{8}$
† mm	77 00	41 30	136 50	19 10	3 20	111 00	8 70	11 90	79 40
† inches	3 $\frac{1}{32}$	1 $\frac{5}{8}$	5 $\frac{3}{8}$	$\frac{3}{4}$	$\frac{1}{8}$	4 $\frac{3}{8}$	1 $\frac{1}{32}$	1 $\frac{5}{32}$	3 $\frac{1}{8}$

BS88 1975 Dimensional Ref B2

TKF 250 & 315A rating Extended Motor Range 315M355†

Rating	List Numbers
Amp	For ordering purposes
250	TKF250
315	TKF315
315M355	TKF315M355†

Dimensions in millimetres & inches

	A	B	D	E	F	G	H	J	M
						Fixing Centres			
mm	77 00	54 00	136 50	25 40	3 20	111 00	8 70	11 90	82 00
inches	3 $\frac{1}{32}$	2 $\frac{1}{8}$	5 $\frac{3}{8}$	1	$\frac{1}{8}$	4 $\frac{3}{8}$	1 $\frac{1}{32}$	1 $\frac{5}{32}$	3 $\frac{1}{4}$

BS88 1975 Dimensional Ref B3

TKM 250 & 315A rating

Rating	List Numbers
Amp	For ordering purposes
250	TKM250
315	TKM315

Dimensions in millimetres & inches

	A	B	D	E	F	G	H	J	M
						Fixing Centres			
mm	77 00	54 00	160 20	25 40	3 20	133 40	10 30	13 50	82 00
inches	3 $\frac{1}{32}$	2 $\frac{1}{8}$	6 $\frac{5}{16}$	1	$\frac{1}{8}$	5 $\frac{1}{4}$	1 $\frac{3}{32}$	1 $\frac{7}{32}$	3 $\frac{1}{4}$

TMF 355 & 400A rating Extended Motor Range 400M450†

Rating	List Numbers
Amp	For ordering purposes
355	TMF355
400	TMF400
400M450	TMF400M450†

Dimensions in millimetres & inches

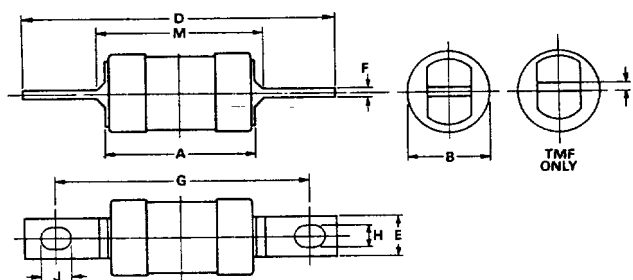
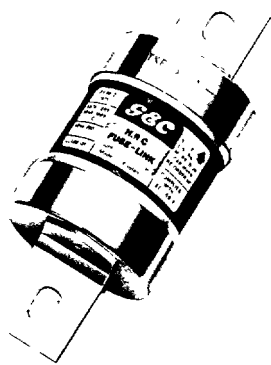
	A	B	D	E	F	G	H	J	M
						Fixing Centres			
mm	83 00	61 10	136 50	25 40	6 30	111 00	8 70	11 90	85 80
inches	3 $\frac{3}{32}$	2 $\frac{1}{32}$	5 $\frac{3}{8}$	1	$\frac{1}{4}$	4 $\frac{3}{8}$	1 $\frac{1}{32}$	1 $\frac{5}{32}$	3 $\frac{3}{8}$

BS88 1975 Dimensional Ref B4

List Numbers and Dimensions

General fuse mounting

TYPE-TRABC
SIC, TRITE
TRIA & TRF



TB 2-63A rating

Rating Amp	List Numbers For ordering purposes
2	TB2
4	TB4
6	TB6
10	TB10
16	TB16
20	TB20
25	TB25
32	TB32
35	TB35
40	TB40
50	TB50
63	TB63

Dimensions in millimetres & inches

	A	B	D	E	F	G Fixing Centres	H	J	M
mm	58 00	26 20	111 90	12 70	1 60	96 90	7.10	10 30	61 90
inches	2 ⁹ / ₃₂	1 ¹ / ₃₂	4 ¹³ / ₃₂	1/2	1/16	3 ¹³ / ₁₆	9/32	1 ³ / ₃₂	2 ⁷ / ₁₆

TBC 2-63A rating

Rating Amp	List Numbers For ordering purposes
2	TBC2
4	TBC4
6	TBC6
10	TBC10
16	TBC16
20	TBC20
25	TBC25
32	TBC32
35	TBC35
40	TBC40
50	TBC50
63	TBC63

Dimensions in millimetres & inches

	A	B	D	E	F	G Fixing Centres	H	J	M
mm	58 00	26 20	128 70	14 30	1 60	111 00	8 70	11 90	61 90
inches	2 ⁹ / ₃₂	1 ¹ / ₃₂	5 ¹ / ₁₆	9/16	1/16	4 ³ / ₈	1 ¹ / ₃₂	1 ⁵ / ₃₂	2 ⁷ / ₁₆

TC 80 & 100A rating

Extended Motor Range
100M125 & 100M200†

Rating Amp	List Numbers For ordering purposes
80	TC80
100	TC100
100M125	TC100M125†
100M160	TC100M160†
100M200	TC100M200†

Dimensions in millimetres & inches

	A	B	D	E	F	G Fixing Centres	H	J	M
mm	70 00	34 90	136 50	19 10	3 20	111 00	8 70	11 90	79 40
inches	2 ³ / ₄	1 ³ / ₈	5 ³ / ₈	3/4	1/8	4 ³ / ₈	1 ¹ / ₃₂	1 ⁵ / ₃₂	3 ¹ / ₈

BS88 1975 Dimensional Ref B1

Type	Ratings Amps	BS 88-2 Dimension reference	Maximum voltage rating	
			A.C.	D.C.
NIT	2-20	A1	550	250
NIT†	20M25, 20M32	A1	415	—
TIA	2-32	A2	660	460
TIA†	32M35-32M63	A2	660	460
TIS	35-63	A3	660	460
TIS†	63M80, 63M100	A3	660	—
TCP	80,100	A4	660	460
TCP†	100M125-100M200	A4	660	—
TFP	125-200	—	660	460
TB	2-63	—	660	460
TBC	2-63	—	660	460
TC	80, 100	B1	660	460
TC†	100M125-100M200	B1	660	—
TF‡	125-200	B2	660	350
TF†	200M250	B2	660	460
TF†	200M315	B2	550	—
TKF	250, 315	B3	660	460
TKF†	315M355	B3	660	460
TKM	250, 315	—	660	460
TMF	355, 400	B4	660	460
TMF†	400M 450	B4	660	460
TM	355, 400	C1	660	460
TM†	400M450	C1	660	460
TMT	355, 400	—	660	460
TTM	450-630	C2	660	450
TTM†	630M670	C2	660	450
TT	450-630	—	660	450
TLM‡	670-800	C3	660	350
TLT	670-800	—	660	350
TLU	560-800	—	660	350
TXU	1000, 1250	D1	660	300

† 'Motor Circuit' fuse links. See page 13.

‡ Type TZF and TZLM fuselinks proved at 460V d.c. are available for users who need superior d.c. performance in these dimensional references.

- Notes:** 1) Non-standard tag arrangements available – Details on request.
 2) A 1600 Amp Type TUV1600 fuse link is also available.
 This is outside the scope of the specification. Details on request.

X-ON Electronics

Largest Supplier of Electrical and Electronic Components

Click to view similar products for [Specialty Fuses](#) category:

Click to view products by [GE Critical Power](#) manufacturer:

Other Similar products are found below :

[63NZ02GL](#) [714125](#) [722134](#) [80NH00GR-6](#) [FWH-200A](#) [FWP-32A14F](#) [FWP-50](#) [HBM-25](#) [12LCT](#) [12TDLSJ63](#) [REN-3](#) [15.5CAVH2E](#) [ECF-2](#)
[ECF-4](#) [ECF-6](#) [170M0213](#) [170M1314](#) [170M1369-D](#) [170M3809D](#) [BK/F02A-2AS](#) [BK/F02B-1A](#) [N-2-1/2](#) [N-3-2/10](#) [NITD2](#) [20D16](#) [20D16SC](#)
[20D27FB](#) [KAA-3](#) [KAB-2](#) [KAB-30](#) [KAJ-60](#) [KAW-3](#) [2D16](#) [LKN-125B](#) [16D27SB](#) [170M1564D](#) [170M2616](#) [170M2668](#) [170M4161](#)
[170M4241](#) [170M4699](#) [ESD63](#) [ABS-25](#) [ABS-30](#) [ABS-8](#) [ACF-15](#) [ACF-30](#) [ACO-30](#) [SSD10](#) [200NH1M](#)