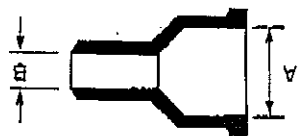


1. 2. 3. 4. 5. 6. 7. 8. 9. 10. 11. 12. 13. 14. 15. 16. 17. 18. 19. 20. 21. 22. 23. 24. 25. 26. 27. 28. 29. 30. 31. 32. 33. 34. 35. 36. 37. 38. 39. 40. 41. 42. 43. 44. 45. 46. 47. 48. 49. 50. 51. 52. 53. 54. 55. 56. 57. 58. 59. 60. 61. 62. 63. 64. 65. 66. 67. 68. 69. 70. 71. 72. 73. 74. 75. 76. 77. 78. 79. 80. 81. 82. 83. 84. 85. 86. 87. 88. 89. 90. 91. 92. 93. 94. 95. 96. 97. 98. 99. 100.

P/C

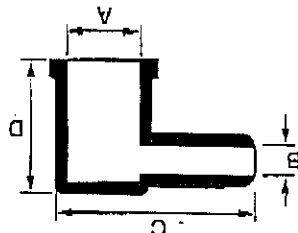
Automotive Shrouds Material: Black P.V.C.

Straight



| PART No | METRIC | |
|---------|--------|-----|
| | A | B |
| PV 2715 | 14.0 | 6.0 |
| PV 2716 | 15.8 | 5.9 |
| PV 2717 | 15.9 | 5.7 |

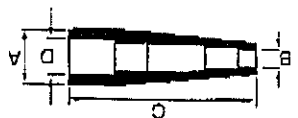
Right angled



| PART No | METRIC | |
|---------|--------|-----|
| | A | B |
| PV 2720 | 15.0 | 6.0 |
| PV 2721 | 14.0 | 6.0 |

072/192/1

Spark plug



| PART No | METRIC | |
|---------|--------|------|
| | A | B |
| PV 2719 | 16.6 | 5.0 |
| | | 60.0 |
| | | 10.0 |

[Handwritten signature]

X-ON Electronics

Largest Supplier of Electrical and Electronic Components

Click to view similar products for [hobut](#) manufacturer:

Other Similar products are found below :

[PD72MIS500V/2/938-658](#) [M850-LTHN-RS-PO](#) [D48A25](#) [SHB60A60-CLASS 1](#) [CT132TRAN10A-5/10V](#) [CT105F-150/5-2.5/1](#) [D72M50](#)
[CT105F-100/5-2.5/1](#) [CT160-5-H7](#) [F3PAM602-15V](#) [CT132TRAN20A-4/20MA](#) [D72D60ADC](#) [F3PAM602-10A](#) [F3PAM602-20A](#)
[F3PAM602-5A](#)