

THIS DRAWING IS UNPUBLISHED. RELEASED FOR PUBLICATION ALL RIGHTS RESERVED. COPYRIGHT - BY TE CONNECTIVITY

LOC	HB	DIST	—
APVD	DWN	DATE	24-APR-12
BHY	BLL	PN, OBSOLETE	ECC-12-004810

REVISONS

REV	DATE	DESCRIPTION	BY	CHK
1	24-APR-12	ECC-12-004810	BLL	BHY

ITEM	PART A	PART B	DESCRIPTION	STATUS
A	ORWH-SS-103DM1F	ORWH-SS-103DM1F	1721153-1	OBsolete
B	ORWH-SS-105DM1F	ORWH-SS-105DM1F	1721153-2	OBsolete
C	ORWH-SS-106DM1F	ORWH-SS-106DM1F	1721153-3	ACTIVE
D	ORWH-SS-109DM1F	ORWH-SS-109DM1F	1721153-4	OBsolete
E	ORWH-SS-112DM1F	ORWH-SS-112DM1F	1721153-5	ACTIVE
F	ORWH-SS-118DM1F	ORWH-SS-118DM1F	1721153-6	OBsolete
G	ORWH-SS-148DM1F	ORWH-SS-148DM1F	1721153-7	ACTIVE
H	ORWH-SH-103DM1F	ORWH-SH-103DM1F	1721153-8	OBsolete
I	ORWH-SH-103DM1F	ORWH-SH-103DM1F	1721153-9	OBsolete
J	ORWH-SH-105DM1F	ORWH-SH-105DM1F	1-1721153-0	OBsolete
K	ORWH-SH-106DM1F	ORWH-SH-106DM1F	1-1721153-1	OBsolete
L	ORWH-SH-109DM1F	ORWH-SH-109DM1F	1-1721153-2	ACTIVE
M	ORWH-SH-112DM1F	ORWH-SH-112DM1F	1-1721153-3	ACTIVE
N	ORWH-SH-118DM1F	ORWH-SH-118DM1F	1-1721153-4	OBsolete
O	ORWH-SH-124DM1F	ORWH-SH-124DM1F	1-1721153-5	ACTIVE
P	ORWH-SH-148DM1F	ORWH-SH-148DM1F	1-1721153-6	ACTIVE

ITEM	DESCRIPTION	MATERIAL	TREATMENT	INCOMBUSTIBILITY
1	YOKE	STEEL	N: PLATED	
2	ARMATURE FORM A	STEEL	Cu PLATED	
3	CORE	STEEL	Cu PLATED	
4	NO TERMINAL	Cu ALLOY		
5	MOVABLE SPRING	Cu ALLOY		
6	MOVABLE CONTACT	Ag ALLOY		
7	STATIONARY CONTACT	Ag ALLOY		
8	CASE	PBT	UL94 V-0	
9	BOBBIN	PBT	UL94 V-0	
10	COIL TERMINAL	HCP		
11	MAGNETIC WIRE	MW79	CLASS 155 F	
12	SEAL	EPOXY RESIN		
13	UV SEAL(FOR SH)	UV RESIN		

THIS DRAWING IS A CONTROLLED DOCUMENT.

CHK: XN,ZHANG  
APVD: WAYNE.PENG  
NAME: TE Connectivity

DIMENSIONS: mm

FINISH: 0 P/LC, 1 P/LC, 2 P/LC, 3 P/LC, 4 P/LC, ANGLES

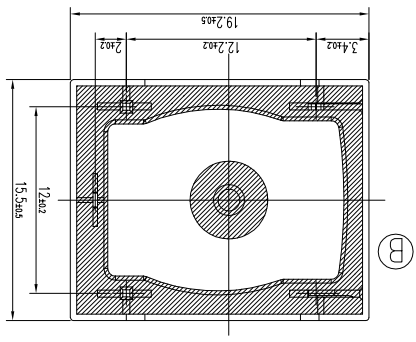
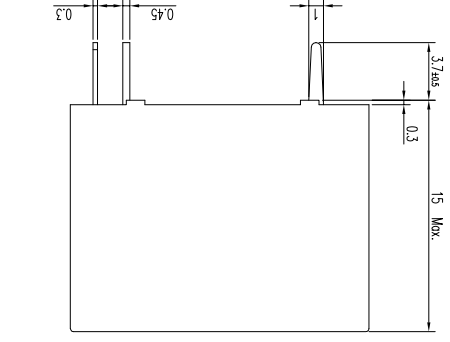
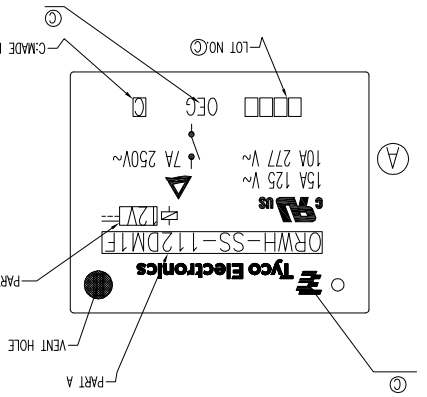
TOLERANCES UNLESS OTHERWISE SPECIFIED:

APPLIC. SPEC: —  
PRODUCT SPEC: —  
M.J.H.O.  
MATERIAL: —  
WEIGHT: —

SIZE: A3  
CAGE CODE: 00779  
DRAWING NO: 1721153

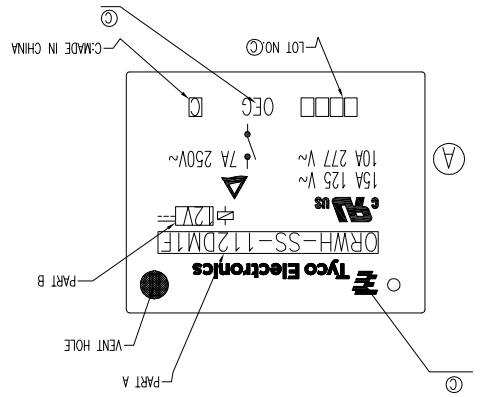
SCALE: 3:1  
SHEET: 1 OF 1  
REV: D

CUSTOMER DRAWING



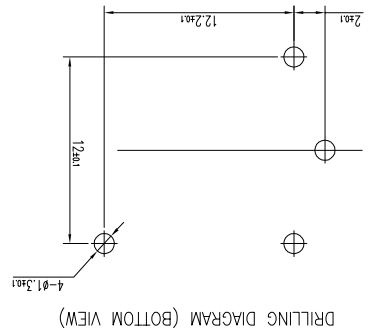
GENERAL TOLERANCE

Diagram dimension	±0.1mm
0.99mm max.	±0.2mm
1 - 2.99mm	±0.3mm
3mm min.	±0.5mm



CIRCUIT DIAGRAM (BOTTOM VIEW)

NOTE  
① LOT NO. SYSTEM AS FOLLOWING:  
YEAR  
WEEK



DRILLING DIAGRAM (BOTTOM VIEW)

A

B

C

D

A

B

C

D

## X-ON Electronics

Largest Supplier of Electrical and Electronic Components

*Click to view similar products for [General Purpose Relays](#) category:*

*Click to view products by [TE Connectivity](#) manufacturer:*

Other Similar products are found below :

[APF30318](#) [JVN1AF-4.5V-F](#) [PCN-105D3MHZ](#) [5JO-10000S-SIL](#) [5JO-1000CD-SIL](#) [5JO-400CD-SIL](#) [LY2S-AC220/240](#) [LYQ20DC12](#)  
[6031007G](#) [6131406HQ](#) [6-1393099-3](#) [6-1393099-8](#) [6-1393122-4](#) [6-1393123-2](#) [6-1393767-1](#) [6-1393843-7](#) [6-1415012-1](#) [6-1419102-2](#) [6-](#)  
[1423698-4](#) [6-1608051-6](#) [6-1608067-0](#) [6-1616170-6](#) [6-1616248-2](#) [6-1616282-3](#) [6-1616348-2](#) [6-1616350-1](#) [6-1616350-8](#) [6-1616358-7](#) [6-](#)  
[1616359-9](#) [6-1616360-9](#) [6-1616931-6](#) [6-1617039-1](#) [6-1617052-1](#) [6-1617090-2](#) [6-1617090-5](#) [6-1617347-5](#) [6-1617353-3](#) [6-1617801-8](#) [6-](#)  
[1617802-2](#) [6-1618107-9](#) [6-1618248-4](#) [M83536/1-027M](#) [CX-4014](#) [MAHC-5494](#) [MAVCD-5419-6](#) [703XCX-120A](#) [7-1393100-5](#) [7-1393111-7](#)  
[7-1393144-5](#) [7-1393767-8](#)