

# Corning Cabelcon **New Self-Install™ IEC compression connectors**

The easy and safe connection  
for radio/tv home  
applications



**Patented design**

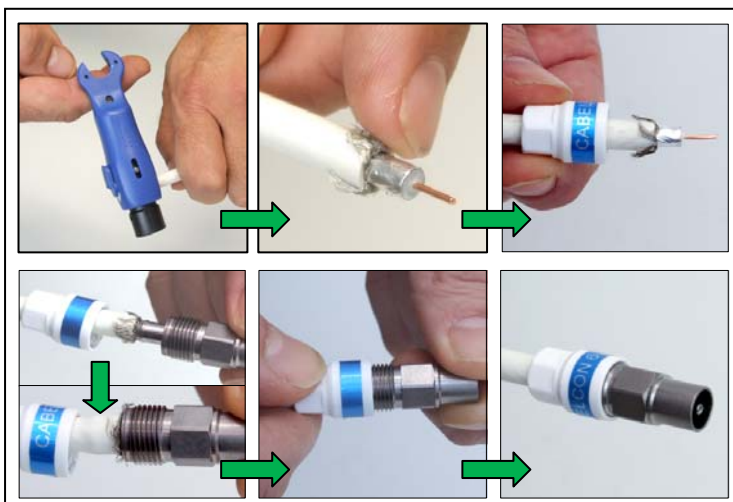
Cabelcon is now offering IEC Self-Install™, an easy-to-install connector for all radio/TV home installations.

IEC Self-Install™ is a true Cabelcon quality product, featuring the well-known Cabelcon performance capabilities and ease of installation.

- Reusable
- Class A screening
- Nitin-6™ plated brass
- Operational to 3 GHz
- No need for compression tools
- Two-piece connector – no loose parts
- Professional quality and excellent performance
- Fits standard RG6 cables (connector size 4.9 + 5.1)



Easy to install without any compression tools



## Technical Data (Typical)(male)

Operational to 3 GHz	
Impedance	75 Ohm
Shielding Eff. 30 - 1000 MHz	115 dB
Transfer Imp. 5-30 MHz	5.0 mOhm/m
Return loss 0.3 - 1750 MHz (typ)	20 dB
Return loss 1750 - 3000 MHz (typ)	19 dB
IMD (3 <sup>rd</sup> order@2x100mW)	-135 dBc
IMD (IP3 value)	+87 dBm
AMP rating	cable data
Max. Tensile strength (overall)	147 N

Detailed datasheets are available on request

## Ordering information

IECM-56 5.1 Self Install	99909686
IECF-56 5.1 Self Install	99909690

**CABELCON**  
connectors

## X-ON Electronics

Largest Supplier of Electrical and Electronic Components

*Click to view similar products for [RF Connectors / Coaxial Connectors](#) category:*

*Click to view products by [Cabelcon](#) manufacturer:*

Other Similar products are found below :

[R125315120](#) [8915-1511-000](#) [89674-0827](#) [5916-1103-603](#) [0106-001-000](#) [6-0001-3](#) [6001-7071-019](#) [6002-7051-003](#) [6002-7551-202](#) [6059674-1](#) [619550-1](#) [630059-000](#) [M39012/25-0021](#) [M39012/79-3008](#) [M39030/3-01N](#) [M39030/3-03N](#) [M3933/25-29N](#) [M3933/25-36N](#) [6500-7071-046](#) [6501-1071-002](#) [M83723/72W24576](#) [M83723/72W2457N](#) [6769](#) [CX050L2AQ](#) [7002-1541-010](#) [7003-1572-002](#) [7004-1512-000](#) [7009-1511-004](#) [7010-1511-000](#) [7029-1511-060](#) [7101-1541-010](#) [7101-1571-002](#) [7105-1521-002](#) [7145-1521-002](#) [7209-1511-011](#) [7210-1511-012](#) [7210-1511-015](#) [7210-1511-019](#) [7210-1511-040](#) [7225-1512-050](#) [7242-1511-000](#) [73137-5015](#) [73216-2241](#) [73251-0111](#) [73251-0672](#) [73276-1501](#) [73366-0013](#) [73404-2300](#) [73413-6080](#) [734151610](#)