

# SOLID TANTALUM

## TD (Resin Dipped Radial) SERIES

### SOLID TANTALUM

The TD series is a range of resin dipped tantalum capacitors designed for entertainment, commercial, and industrial equipment. They have sintered anodes and solid electrolyte. The epoxy resin housing is flame retardant with a limiting oxygen index in excess of 30 (ASTM-D-2863).

### RATINGS

**Capacitance Range:** 0.1µf to 680µf

**Tolerance:** ±20%

**Voltage Range:** 6.3V to 50V

### PERFORMANCE SPECIFICATIONS

**Operating Temperature Range:**

-55°C to +85°C (-67°F to +185°F)

**Capacitance Tolerance (M):** ±20%

measured at +20°C (+68°F), 120Hz

**Dissipation Factor:** measured at +20°C (+68°F), 120Hz

| Capacitance Range µf | 0.1 - 1.5 | 2.2 - 6.8 | 10 - 68 | 100 - 680 |
|----------------------|-----------|-----------|---------|-----------|
|                      | ≤ 0.04    | ≤ 0.06    | ≤ 0.08  | ≤ 0.10    |

**Surge Voltage:**

| DC Rated Voltage | 6.3 | 10 | 16 | 20 | 25 | 35 | 50 |
|------------------|-----|----|----|----|----|----|----|
| Surge Voltage    | 8   | 13 | 20 | 26 | 33 | 46 | 65 |

### MECHANICAL SPECIFICATIONS

**Lead Solderability:**

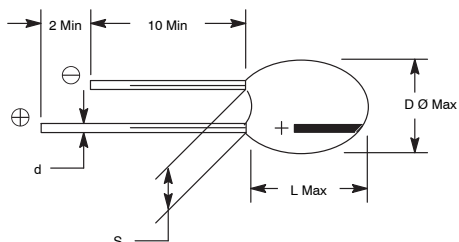
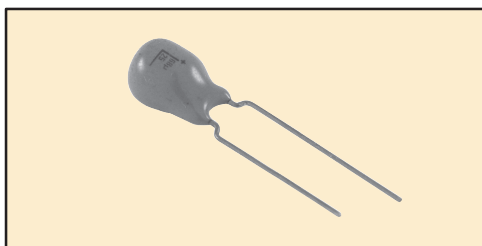
Meets the requirements of MIL-STD 202, Method 208

**Marking:**

Consists of capacitance, DC voltage, and polarity.

**Recommended Cleaning Solvents:**

Methanol, isopropanol ethanol, isobutanol, petroleum ether, propanol and/or commercial detergents. Halogenated hydrocarbon cleaning agents such as Freon (MF, TF, or TC), trichloroethylene, trichloroethane, or methylchloride are not recommended as they may damage the capacitor.



### CAPACITANCE RANGE:

(Number denotes case size)

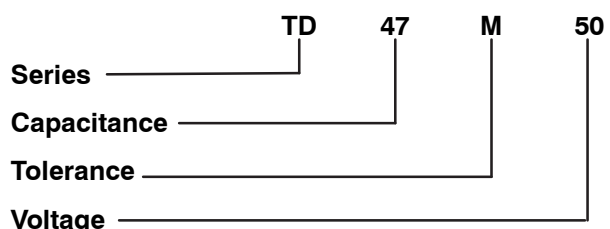
| Rated Voltage (WV) | 6.3 | 10 | 16 | 20 | 25 | 35 | 50 |
|--------------------|-----|----|----|----|----|----|----|
| Surge Voltage (V)  | 8   | 13 | 20 | 26 | 33 | 46 | 65 |
| Cap (µf)           |     |    |    |    |    |    |    |
| 0.10               |     |    |    |    |    | 1  | 1  |
| 0.15               |     |    |    |    |    | 1  | 1  |
| 0.22               |     |    |    |    |    | 1  | 1  |
| 0.33               |     |    |    |    |    | 1  | 2  |
| 0.47               |     |    |    |    |    | 1  | 2  |
| 0.68               |     |    |    |    |    | 1  | 2  |
| 1.0                |     |    |    | 1  | 1  | 1  | 4  |
| 1.5                |     |    | 1  | 1  | 1  | 2  | 5  |
| 2.2                |     | 1  | 1  | 2  | 2  | 3  | 5  |
| 3.3                | 1   | 1  | 2  | 3  | 3  | 4  | 7  |
| 4.7                | 1   | 2  | 3  | 4  | 4  | 5  | 8  |
| 6.8                | 2   | 3  | 4  | 5  | 5  | 6  | 8  |
| 10.0               | 3   | 4  | 5  | 6  | 6  | 7  | 9  |
| 15.0               | 4   | 5  | 6  | 7  | 7  | 9  | 10 |
| 22.0               | 5   | 6  | 7  | 8  | 9  | 10 | 13 |
| 33.0               | 6   | 7  | 8  | 9  | 10 | 12 |    |
| 47.0               | 7   | 8  | 10 | 11 | 12 | 14 |    |
| 68.0               | 8   | 9  | 11 | 13 | 13 |    |    |
| 100.0              | 9   | 11 | 13 | 13 |    |    |    |
| 150.0              | 11  | 13 | 15 |    |    |    |    |
| 220.0              | 12  | 14 | 15 |    |    |    |    |
| 330.0              | 14  | 15 |    |    |    |    |    |
| 470.0              | 15  |    |    |    |    |    |    |
| 680.0              | 15  |    |    |    |    |    |    |

### TD Series Dimensions: mm

Diameter (D Ø) x Length (L)

| Case Size | Diameter (D Ø) | Length (L) | Lead Wire (d) | Spacing (S) |
|-----------|----------------|------------|---------------|-------------|
| 1         | 4.50           | 8.50       | 0.50          | 2.54 ±0.51  |
| 2         | 4.50           | 9.00       | 0.50          |             |
| 3         | 5.00           | 10.00      | 0.50          |             |
| 4         | 5.00           | 10.50      | 0.50          |             |
| 5         | 5.50           | 10.50      | 0.50          |             |
| 6         | 6.00           | 11.50      | 0.50          |             |
| 7         | 6.50           | 11.50      | 0.50          | 5.08 ±0.51  |
| 8         | 7.00           | 12.00      | 0.40          |             |
| 9         | 8.00           | 13.00      | 0.50          |             |
| 10        | 8.50           | 14.00      | 0.50          |             |
| 11        | 9.00           | 14.00      | 0.50          |             |
| 12        | 9.00           | 14.50      | 0.50          |             |
| 13        | 9.00           | 16.00      | 0.50          |             |
| 14        | 10.00          | 17.00      | 0.50          |             |
| 15        | 10.00          | 18.50      | 0.50          |             |

### ORDERING INFORMATION



## X-ON Electronics

Largest Supplier of Electrical and Electronic Components

*Click to view similar products for [Tantalum Capacitors - Solid SMD category:](#)*

*Click to view products by [NTE manufacturer:](#)*

Other Similar products are found below :

[B45197-A2157-M509](#) [B45197A5226M409](#) [CWR09JC105KCB\M100](#) [CWR11CH107KBA](#) [TCSCS1A336KBAR](#) [419-2060-501](#) [B45196-H5106-K309](#) [B45196-H6226-K509](#) [CWR29JC106KBEZ](#) [T83D475K050RCCL](#) [591D158X06R3R2T20H](#) [M39006/22-0640H](#) [M39003/01-2596](#) [TCSCS1A476KBAR](#) [T83E107K016RCCL](#) [T83D685K035RCCL](#) [293D475X0035B2DE3](#) [TMCMB1C475KTRF](#) [293D155X9020A2DE3](#) [298W476X06R3M2T](#) [298W107X0004M2T](#) [CWR29NC225KDFC](#) [CWR29KC156KDHC\100](#) [CWR29HH155KCBB](#) [293D476X9035E2TE3](#) [CWR29KC226JCGC](#) [T513X227K016BH4585](#) [T97H107M040HSA](#) [595D686X9010B2T](#) [T25D337M016CSZ](#) [591D156X9025R8T15H](#) [594D686X9016C2T](#) [595D106X0025C8T](#) [CWR29DC226KBDA\TR](#) [CWR29FC106KBBA\TR](#) [CWR29FC686KBGA\TR](#) [CWR29FC157KBXA\TR](#) [CWR29HC105KBAA\TR](#) [CA55-B6R3M107T](#) [CA55-E025M107T](#) [TC212B475K035Y](#) [TAZH685K035LBSB0824](#) [TAZG107K010LBSB0800](#) [TAZH475K050LBSB0H23](#) [TAZH156K025CBSZ0824](#) [TBJD156K025CBSZ0824](#) [TMCSA1V154MTRF](#) [TMCSA0J225MTRF](#) [TMCSA1A155MTRF](#) [TMCSA1D684MTRF](#)