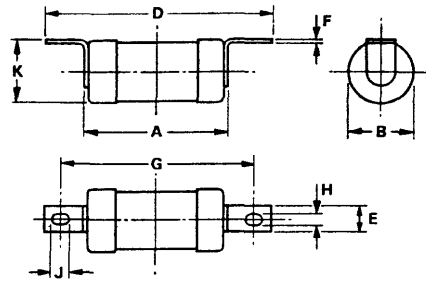
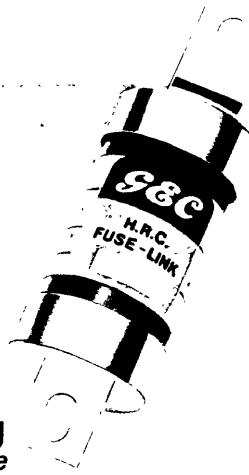


Off-set tags
2-hole fixing

List Numbers
and
Dimensions



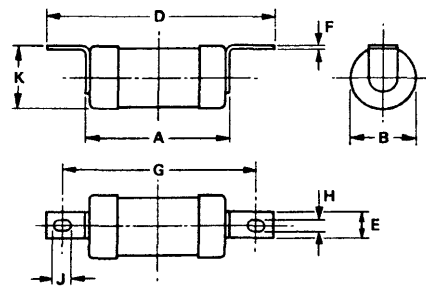
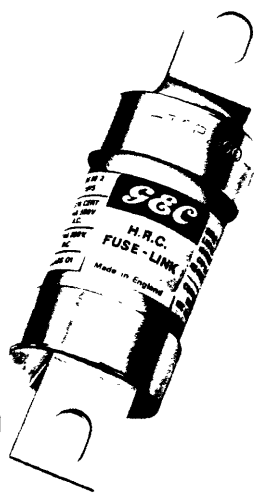
35-63A rating
Extended Motor Range
63M80-63M100†

Rating	List Numbers
Amp	For ordering purposes
35	TIS35
40	TIS40
50	TIS50
63	TIS63
63M80	TIS63M80†
63M100	TIS63M100†

Dimensions in millimetres & inches

	A	B	D	E	F	G	H	J	K
	Fixing Centres								
mm	56.40	23.80	85.80	8.70	1.20	73.00	5.20	7.10	23.80
inches	2 ⁷ / ₃₂	1 ⁵ / ₁₆	3 ³ / ₈	1 ¹ / ₃₂	³ / ₆₄	2 ⁷ / ₈	¹³ / ₆₄	⁹ / ₃₂	1 ⁵ / ₁₆
† mm	58.00	26.20	90.50	12.70	1.20	73.00	5.20	—	27.80
† inches	2 ⁹ / ₃₂	1 ¹ / ₃₂	3 ⁹ / ₁₆	¹ / ₂	³ / ₆₄	2 ⁷ / ₈	¹³ / ₆₄	—	1 ³ / ₃₂

BS88 . 1975 Dimensional Ref. A3



TCP
80 & 100A rating
Extended Motor Range
100M125-100M200†

Rating	List Numbers
Amp	For ordering purposes
80	TCP80
100	TCP100
100M125	TCP100M125†
100M160	TCP100M160†
100M200	TCP100M200†

Dimensions in millimetres & inches

	A	B	D	E	F	G	H	J	K
	Fixing Centres								
mm	70.00	34.90	111.00	19.10	2.40	93.70	8.70	10.30	34.90
inches	2 ³ / ₄	1 ³ / ₈	4 ³ / ₈	³ / ₄	³ / ₃₂	3 ¹¹ / ₁₆	¹¹ / ₃₂	¹⁹ / ₃₂	1 ³ / ₈

BS88 . 1975 Dimensional Ref. A4

TFP
125-200A rating

Rating	List Numbers
Amp	For ordering purposes
125	TFP125
160	TFP160
200	TFP200

Dimensions in millimetres & inches

	A	B	D	E	F	G	H	J	K
	Fixing Centres								
mm	77.00	41.30	111.00	19.10	2.40	93.70	8.70	10.30	43.60
inches	3 ¹ / ₃₂	1 ⁵ / ₈	4 ³ / ₈	³ / ₄	³ / ₃₂	3 ¹¹ / ₁₆	¹¹ / ₃₂	¹⁹ / ₃₂	1 ²³ / ₃₂

† Fuse links from the Extended Range for Motor Circuits – See Page 13

For some years past, it has been possible to produce fuse link current ratings larger than the maximum preferred ones in given body sizes, e.g. 32A in BS88: Part 2: 1975 Dimensional Ref. A1, compared with the maximum preferred rating of 20A. Such fuse link ratings are defined in BS88: 1975 as 'motor circuit fuse links' and they have a dual basis of rating, namely a given rating with respect to their ability to carry current continuously, and a larger current rating with respect to their time/current characteristics. For example a TIS63M100 has a continuous current rating of 63A, but the time/current characteristic of a 100A fuse link.

These fuse links fulfil a useful purpose in enabling economies to be made in the sizes of associated equipment, e.g., a 30kW, 415V, direct-on-line 3-phase induction motor has a full load current of 55A, but its starting surges are such that it needs a 100A fuse link to withstand them (see page 14). This motor can therefore be protected by TIS63M100 fuse links in 'Red Spot' 63A fittings. Had the motor circuit rating fuse not been available it would have been necessary to use TCP100 fuse-links in 'Red Spot' 100A fittings.

A motor circuit fuse link must **not** be run continuously at any load current in excess of the smaller of its dual current ratings.

List Numbers	Normal Continuous Rating Amp	Rating for Motor Starting Amp	AC * Voltage Rating	Dimensions	
				Equivalent To Type:	See page
NIT20M25	20	25	415	NIT	6
NIT20M32		32	415		
TIA32M35	32	35	660	TIA	6
TIA32M40		40	660		
TIA32M50		50	660		
TIA32M63		63	660		
TIS63M80	63	80	660	TIS	7
TIS63M100		100	660		
TCP100M125	100	125	660	TCP	7
TCP100M160		160	660		
TCP100M200		200	660		
TC100M125	100	125	660	TC	8
TC100M160		160	660		
TC100M200		200	660		
TF200M250	200	250	660	TF	9
TF200M315		315	550		
TKF315M355	315	355	660	TKF	9
TMF400M450	400	450	660	TMF	9
TM400M450	400	450	660	TM	10
TTM630M670	630	670	660	TTM	10

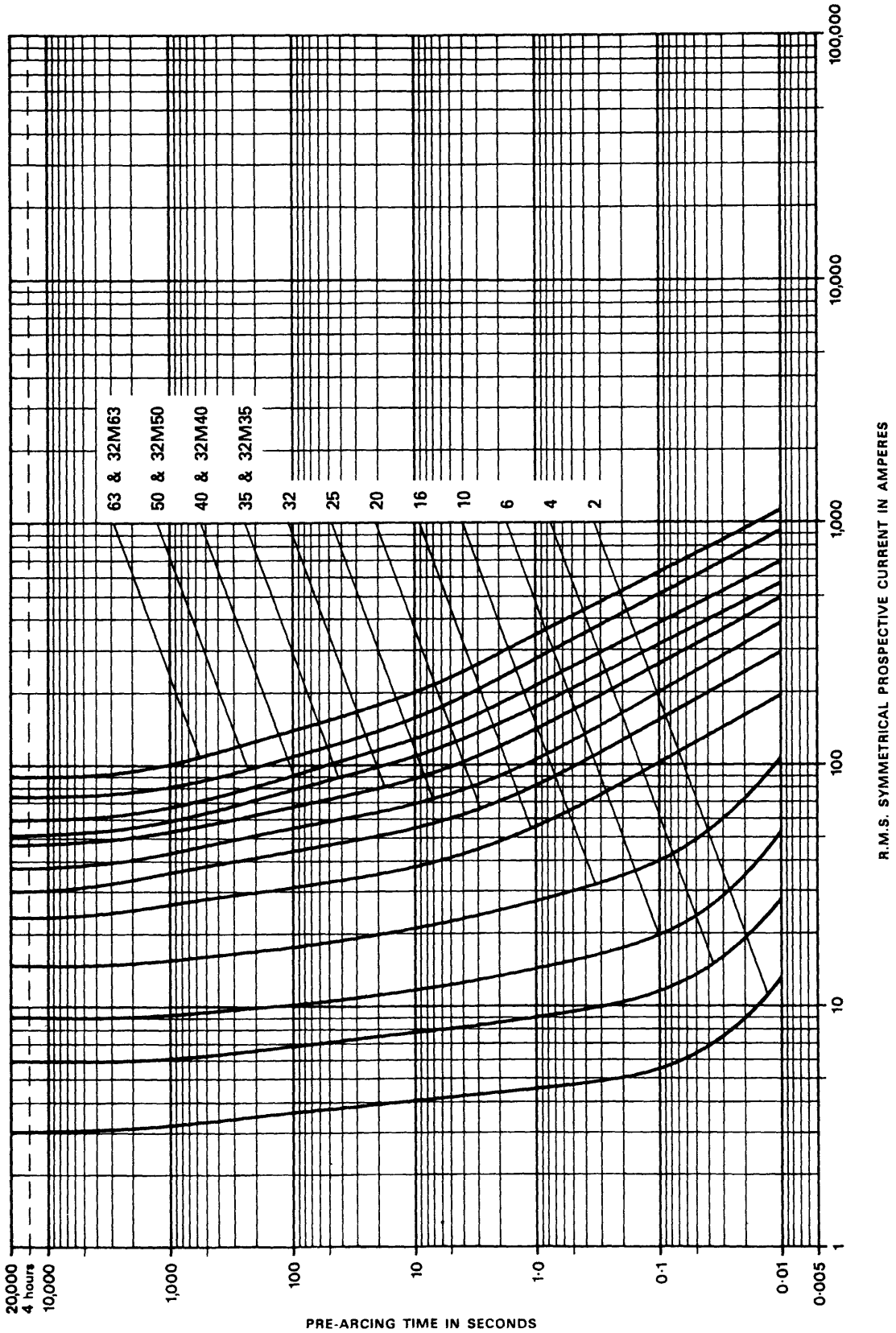
Note:

* When using these fuse links it is important to check the fuse voltage rating.

Type 1 2-63 Amp

Including extended range
of motor circuit fuse links

Time/Current Characteristics



Maximum Voltage Ratings

Performance Data

Type	Ratings Amps	BS88-2 Dimension reference	Maximum voltage rating	
			A.C.	D.C.
NIT	2-20	A1	550	250
NIT†	20M25, 20M32	A1	415	—
TIA	2-32	A2	660	460
TIA†	32M35-32M63	A2	660	460
TIS	35-63	A3	660	460
TIS†	63M80, 63M100	A3	660	—
TCP	80,100	A4	660	460
TCP†	100M125-100M200	A4	660	—
TFP	125-200	—	660	460
TB	2-63	—	660	460
TBC	2-63	—	660	460
TC	80, 100	B1	660	460
TC†	100M125-100M200	B1	660	—
TF‡	125-200	B2	660	350
TF†	200M250	B2	660	460
TF†	200M315	B2	550	—
TKF	250, 315	B3	660	460
TKF†	315M355	B3	660	460
TKM	250, 315	—	660	460
TMF	355, 400	B4	660	460
TMF†	400M450	B4	660	460
TM	355, 400	C1	660	460
TM†	400M450	C1	660	460
TMT	355, 400	—	660	460
TTM	450-630	C2	660	450
TTM†	630M670	C2	660	450
TT	450-630	—	660	450
TLM‡	670-800	C3	660	350
TLT	670-800	—	660	350
TLU	560-800	—	660	350
TXU	1000, 1250	D1	660	300

† 'Motor Circuit' fuse links. See page 13.

‡ Type TZF and TZLM fuselinks proved at 460V d.c. are available for users who need superior d.c. performance in these dimensional references.

Notes: 1) Non-standard tag arrangements available – Details on request.

2) A 1600 Amp Type TUV1600 fuse link is also available.

This is outside the scope of the specification. Details on request.

X-ON Electronics

Largest Supplier of Electrical and Electronic Components

Click to view similar products for [ge critical power manufacturer](#):

Other Similar products are found below :

[CAR0812FPB-Z01A](#) [CP2725AC48TEZ-FB](#) [ESTW010A0A41-HZ](#) [APTS006A0X4-SRZ](#) [ATH030A0X3-SRPHZ](#) [EHW007A0B41Z](#)
[GP100H3R48TEZ](#) [UPS12438](#) [UPS12434](#) [UPS25512](#) [UPS23916EBM](#) [UPSITSNMP](#) [UPS1024747](#) [GFL631T-3](#) [J85480S1L20Z](#)
[DIGITAL_POL_EVAL_KIT](#) [SC001A2B91-SRZ](#) [UPS1500ITSIT](#) [EP1000-UTEZ](#) [J2014001L402](#) [EP3000AC48INZ](#) [120-601](#)
[QBVW033A0B41-HZ](#) [CP3500AC54TEZ](#) [CP3000AC54TEZ](#) [UPS1024746](#) [CCR0512FPXXXZ01A](#) [CLP0112FPXXXZ01A](#)
[CCR0512FPKITZ01A](#) [500T058X117-122](#) [CAR1248FPBCXZ01A](#) [EQW020A0F1Z](#) [CAR1248FPBXXZ01A](#) [CAR2024FPBXXZ01A](#)
[J2014004L001-CC SHELF](#) [19SHT-162](#) [KNW020A0F641-88Z](#) [CLP0224FPXXXZ01A](#) [SSTW005A0F41-SRZ](#) [QSVW050A0B41-HZ](#)
[EBDW020A0B641-HZ](#) [AXH005A0XZ](#) [ATH006A0XZ](#) [TJT120A0X3-SZ](#) [ESTW004A2C41Z](#) [APTS030A0X3-SRPHZ](#) [A28F5610S](#)
[PJT014A0X3-SRZ](#) [465-069](#) [19SHT-102](#)