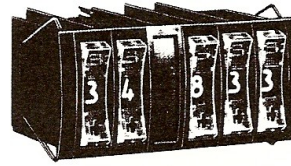


Digital Rocker Switches

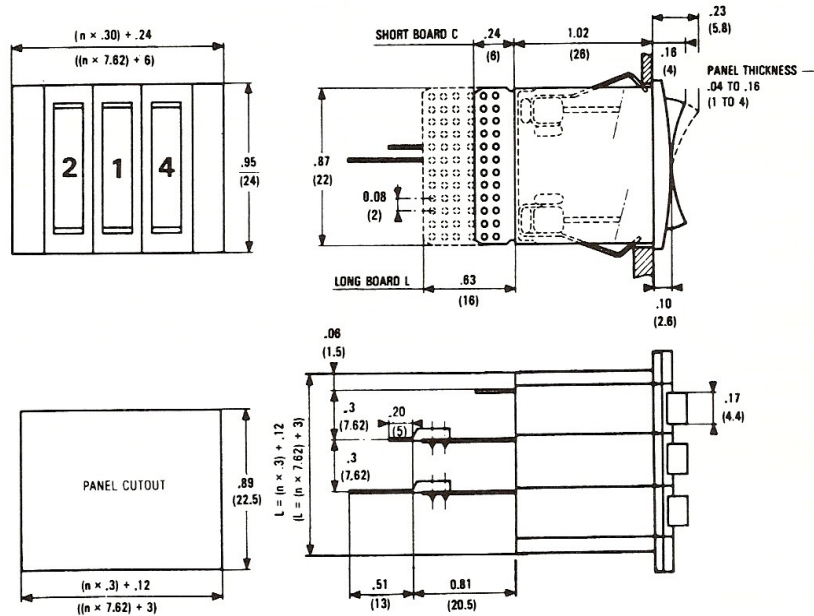
Series 84 214

- Fast switching in both directions
- Large numerals – .16 in. (4.0 mm) high
- All modules easily assembled without hardware
- Good looking – easy to read



| Mechanical & Electrical Specifications | | Materials |
|--|---|---|
| Operating Voltage: .1 to 250 V AC .1 to 50 V DC Nominal Electrical Load (Resistive Load): .1 mA to 100 mA Maximum Non-Switching Load: 1 A Contact Resistance: 120 mΩ max. Life at 50 V DC, .1 A, Resistive Load: 1 million operations Note: For voltages and currents less than the above values, please contact us. | Dielectric Strength: 600 V Operating Temperature: -13° F. to 158° F. (-25° C. to 70° C.) Storage Temperature: -40° F. to 185° F. (-40° C. to 85° C.) Dial Character Dimensions: .16 in. x .10 in. (4.0 mm x 2.5 mm) Operating Force at End of Rocker: 17 oz. (500 g) | Case: Noryl Wheel: Delrin Rocker Actuator: Makrolon* (Polycarbonate) Contacts and Tracks: Copper–Nickel–Gold Brush: Beryllium bronze Printed Circuit Board: Glass-filled epoxy (P.C. 75) *Special elements not used in other manufacturers products. |

Dimensions in inches (mm)



n = Number of modules



Series 84 214
Rocker Switch - miniature - panel mount

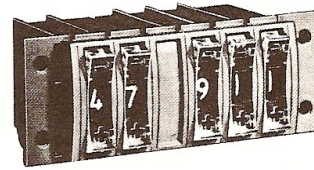
| | | | |
|--|------------|---------------------------|----------|
| Reference | | 84 214 0 | 1 |
| | | 10 Digits Standard Module | |
| Standard Codes (See Truth Tables) | | | 2 |
| Decimal | 01 | / | |
| BCD | 02 | | |
| BCD & Complement | 03 | | |
| 2 Positions Repeating (+/-) | 04 | | |
| 2 Positions Repeating (5/0) | 05 | | |
| BCD Complement | 07 | | |
| BCD Excess 6 & Complement | 08 | | |
| Circuits | | | 3 |
| Short | C | | |
| Long | L | | |
| Case | | | 4 |
| Black | N | | |
| Wheels | | | 5 |
| Black | N | | |
| Connections | | | 6 |
| Direct Soldering | 1 | : | |
| Pins for Wire Wrapping | 2 | | |
| Pins for PC Board Soldering | 3 | | |
| Dial Stops | | | 7 |
| State the first and last digits. For Example 4/6 Digits locked out 0-1-2-3-7-8-9; usable 4-5-6 | | | |
| Mounting Accessories | | | 8 |
| Pair of End Caps | 79 214 283 | | |
| Spacer | 79 214 216 | | |
| <p>To Order Specify: 1-2/3-4-5-6:7-8 For Example: 84 214 003/LNN1:4/6 with 79 211 283 84 214 0 switch with BCD & compliment code #3/long board with direct soldering #1 connections: Lock-out all numbers except 4, 5 & 6 and with a pair of end caps.</p> | | | |

3

Crouzet® Digital Rocker Switches

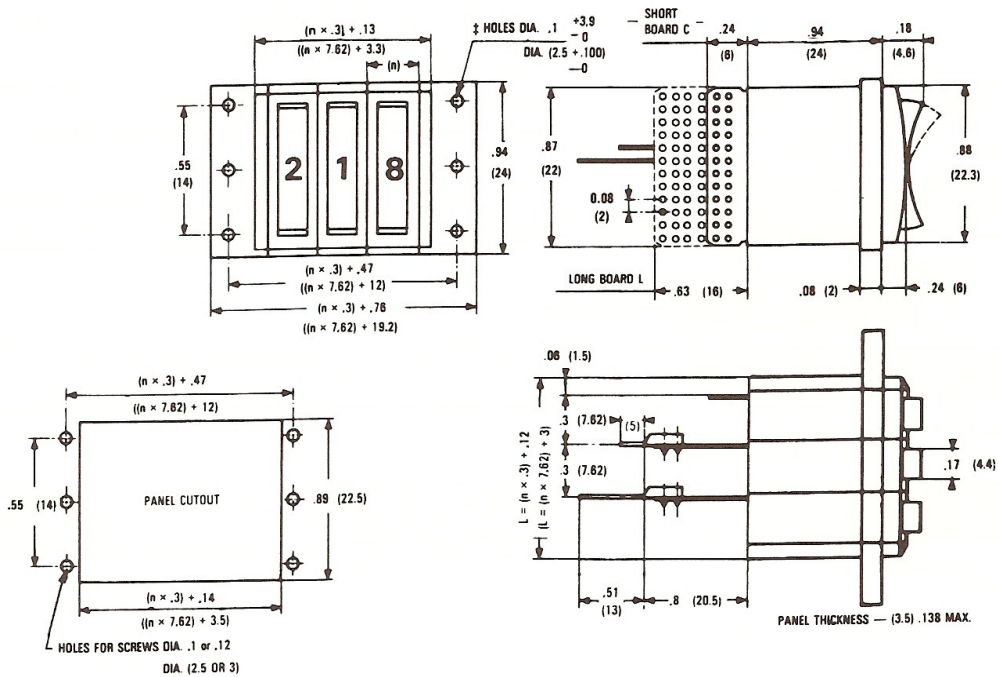
Series 84 218

- Fast switching in both directions
- Large numerals – .16 in. (4.0 mm) high
- All modules easily assembled without hardware
- Good looking – easy to read



| Mechanical & Electrical Specifications | | Materials |
|--|--|---|
| Operating Voltage: .1 to 250 V AC .1 to 50 V DC Nominal Electrical Load (Resistive Load): .1 mA to 100 mA Maximum Non-Switching Load: 1 A Contact Resistance: 120 mΩ max. Life at 50 V DC, .1 A, Resistive Load: 1 million operations Note: For voltages and currents less than the above values, please contact us. | Dielectric Strength: 600 V Operating Temperature: -13° F. to 158° F. (-25° C. to 70° C.) Storage Temperature: -40° F. to 185° F. (-40° C. to 85° C.) Dial Character Dimensions: .16 in. x .10 in. (4.0 mm x 2.5 mm) Operating Force at End of Rockers: 17 oz. (500 g) | Case: Noryl Wheel: Delrin Rocker Actuator: Makrolon* (Polycarbonate) Contacts and Tracks: Copper-Nickel-Gold Brush: Beryllium bronze Printed Circuit Board: Glass-filled epoxy (P.C. 75) *Special elements not used in other manufacturers products. |

Dimensions in inches (mm)



3



Series 84 218
Rocker Switch - miniature - rear mount

| | | |
|---|-----------------|----------|
| Reference | 84 218 0 | 1 |
| 10 Digits Standard Module | | |
| Standard Codes (See Truth Tables) | | 2 |
| Decimal | 01 | / |
| BCD | 02 | |
| BCD & Complement | 03 | |
| 2 Positions Repeating (+/-) | 04 | |
| 2 Positions Repeating (5/0) | 05 | |
| BCD Complement | 07 | |
| BCD Excess 6 & Complement | 08 | |
| Circuits | | |
| Short | C | |
| Long | L | |
| Case | | 4 |
| Black | N | |
| Wheels | | 5 |
| Black | N | |
| Connections | | 6 |
| Direct Soldering | 1 | : |
| Pins for Wire Wrapping | 2 | |
| Pins for PC Board Soldering | 3 | |
| Dial Stops | | 7 |
| State the first and last digits. For Example 4/6 Digits locked out 0-1-2-3-7-8-9; usable 4-5-6 | | |
| Mounting Accessories | | 8 |
| Pair of End Caps | 79 214 285 | |
| Spacer | 79 214 222 | |
| To Order Specify: 1-2/3-4-5-6:7-8 | | |
| For Example: 84 218 003/LNN1:4/6 with 79 214 285 84 218 0 switch with BCD & compliment code #3/long board with direct soldering #1 connections: Lock-out all numbers except 4, 5 & 6 and with a pair of end caps. | | |

3

X-ON Electronics

Largest Supplier of Electrical and Electronic Components

Click to view similar products for [Switch Hardware](#) category:

Click to view products by [Crouzet](#) manufacturer:

Other Similar products are found below :

[893102000](#) [LZZ1A](#) [0098.9234](#) [61-9707.7](#) [61-9771.0](#) [M2PA-5011](#) [635401](#) [6PA104](#) [6PA113](#) [6PA147-E6](#) [6PA148-E6](#) [6PA32](#) [6PA9](#) [700106](#)
[700109](#) [700201A56](#) [700303A56](#) [700701264](#) [700C1GRY](#) [700C2GRN](#) [704-6001](#) [704.960.4](#) [704.960.9](#) [704.965.1](#) [704.965.2](#) [704.965.6](#)
[704.966.0](#) [7089-3](#) [71M1048](#) [757200264](#) [778000A56](#) [79215938](#) [MHU35](#) [MHU37](#) [825.003.011](#) [825.005.011](#) [825.053.011](#) [825.055.011](#)
[826.000.071](#) [827.020.011](#) [827.400.021](#) [835.900.023](#) [MML52C10C](#) [MML52E10C](#) [MML72EEK](#) [MML92HGH](#) [MML93K](#) [84211M02CNNS](#)
[84211M02LGRS](#) [84211M02LNNX3](#)