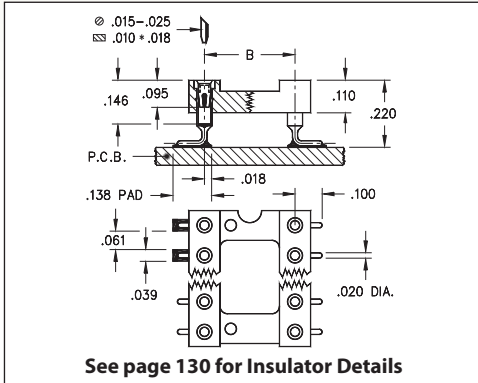
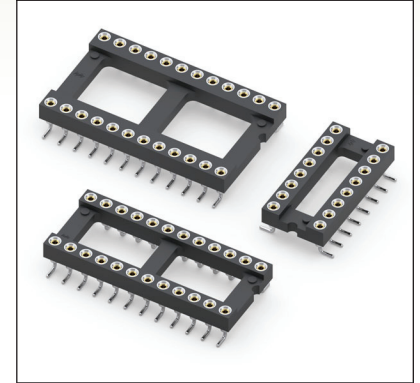


DUAL-IN-LINE SOCKETS

SERIES 110...105 • SURFACE MOUNT, GULL WING • OPEN FRAME



- Socket pins feature closed end construction eliminating any solder wicking problems
- Gull wing terminals provide maximum strength and permit easy visual inspection of solder joints. Series 110 uses Mill-Max #1005 pins. See page 166 for details
- Hi-Rel, 4-finger BeCu #30 contact is rated at 3 amps. See page 253 for details
- Insulators are high temperature thermoplastic, suitable for all soldering operations
- For Electrical, Mechanical and Environmental Data, see page 264 for details



Total number of pins				Quantity per tube	<h3>ORDERING INFORMATION</h3>															
	A	B	C																	
10	0.5	0.2	0.3	40	110-XX-210-41-105000															
4	0.2	0.3	0.4	102	110-XX-304-41-105000															
6	0.3	0.3	0.4	67	110-XX-306-41-105000															
8	0.4	0.3	0.4	50	110-XX-308-41-105000															
10	0.5	0.3	0.4	40	110-XX-310-41-105000															
14	0.7	0.3	0.4	28	110-XX-314-41-105000															
16	0.8	0.3	0.4	25	110-XX-316-41-105000															
18	0.9	0.3	0.4	22	110-XX-318-41-105000															
20	1.0	0.3	0.4	20	110-XX-320-41-105000															
22	1.1	0.3	0.4	18	110-XX-322-41-105000															
24	1.2	0.3	0.4	16	110-XX-324-41-105000															
28	1.4	0.3	0.4	14	110-XX-328-41-105000															
20	1.0	0.4	0.5	20	110-XX-420-41-105000															
22	1.1	0.4	0.5	18	110-XX-422-41-105000															
24	1.2	0.4	0.5	16	110-XX-424-41-105000															
28	1.4	0.4	0.5	14	110-XX-428-41-105000															
32	1.6	0.4	0.5	12	110-XX-432-41-105000															
24	1.2	0.6	0.7	16	110-XX-624-41-105000															
28	1.4	0.6	0.7	14	110-XX-628-41-105000															
32	1.6	0.6	0.7	12	110-XX-632-41-105000															
36	1.8	0.6	0.7	11	110-XX-636-41-105000															
40	2.0	0.6	0.7	10	110-XX-640-41-105000															
42	2.1	0.6	0.7	9	110-XX-642-41-105000															
48	2.4	0.6	0.7	8	110-XX-648-41-105000															
50	2.5	0.6	0.7	8	110-XX-650-41-105000															
52	2.6	0.6	0.7	7	110-XX-652-41-105000															
50	2.5	0.9	1.0	8	110-XX-950-41-105000															
52	2.6	0.9	1.0	7	110-XX-952-41-105000															
64	3.2	0.9	1.0	6	110-XX-964-41-105000															
See page 264 for coplanarity information					SPECIFY PLATING CODE XX=					91	93			43	47					
					Sleeve (Pin)										200 μ" Sn/Pb	200 μ" Sn/Pb			200 μ" Sn	200 μ" Sn
					Contact (Clip)										10 μ" Au	30 μ" Au			30 μ" Au	Au Flash

XX=Plating Code
See Below



X-ON Electronics

Largest Supplier of Electrical and Electronic Components

Click to view similar products for [Sockets & Adapters](#) category:

Click to view products by [Mill-Max](#) manufacturer:

Other Similar products are found below :

[6508-0-00-01-00-00-33-0](#) [AC164341](#) [AC164348](#) [1262](#) [C8051F350-TB](#) [KITPF0100SKTEVBE](#) [LFVDBJR](#) [SK-AX2-CQ256-KITTOP](#)
[AC164334](#) [AC164353](#) [AC164383](#) [SOCKET-ADM106XTQZ](#) [SPC564A80CAL176](#) [ST5M1267-001](#) [FP3-10PIN-ADAPTER-KIT](#) [CY3675-](#)
[LCC4A](#) [TDGL015](#) [ATF15XXDK3-SAA100](#) [LFBGADATC](#) [SM64TQ-ACTEL-1](#) [SM68P-ACTEL](#) [8.06.03](#) [AC164358](#) [ATSTK600-RC99](#)
[76002056](#) [DS91230+](#) [OM13019,598](#) [09185058](#) [AC164369](#) [AC164409](#) [AC164402](#) [SMPA-ISP-ACTEL-3-KIT](#) [ICESABCM81-01](#) [LFVDBGF](#)
[AC164408](#) [KIT 70601-3](#) [S5U13U00P00C100](#) [AC164352](#) [PN-Q208/5256V](#) [PN-T100/LC4256](#) [LFBGAINTM55U1QA](#) [AC164370](#)
[AC164355](#) [AC164367](#) [LFDAS12XEFT](#) [CY3675-TSSOP20B](#) [SPC563M64AVB144](#) [ATF15XXDK3-SAA44](#) [AC164410](#)
[SPC563M64AVB176](#)