

# GROUND RESISTANCE TESTERS

## Digital Tester

### Models 4620 & 4630

**Both models will perform over 2000 measurements for the 15 second tests between recharging or battery replacement**

#### ► SPECIFICATIONS

MODELS	4620	4630	
<b>ELECTRICAL</b>			
Range	20Ω	200Ω	2000Ω
Measurement Range	0.00 to 19.99Ω	20.0 to 199.9Ω	200 to 1999Ω
Resolution	10mΩ	100mΩ	1Ω
Open Voltage	≤42V peak	≤42V peak	≤42V peak
Resistance Measurement Frequency	128Hz square wave	128Hz square wave	128Hz square wave
Test Current	10mA	1mA	0.1mA
Accuracy	2% of Reading ± 1ct	2% of Reading ± 1ct	5% of Reading ± 3cts
Auxiliary Electrode Influence Max Res. in Current Circuit Max Res. in Voltage Circuit	3kΩ 50kΩ	30kΩ 50kΩ	50kΩ 50kΩ
Response Time	Approximately four to eight seconds for a stabilized measurement		
Withstanding Voltage	250Vac or 100Vdc		
Power Source	Eight C cell batteries (included); Alkaline recommended	120/230V 50/60Hz Rechargeable 9.6V, 3.5 Ah NiMH battery pack (included)	
Battery Life	>2000 15-second measurements; LO BAT indication on LCD		
Fuse Protection	0.1A, >250V, 0.25 x 1.25"; 30kA Interrupt Capacity		

#### ► PRODUCT INCLUDES

User manual and USB stick supplied with ground tester workbook.



Model 4630 Kit – 500 ft shown  
Test Kit descriptions on next page



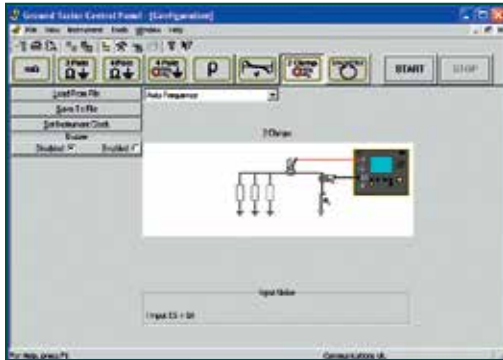
#### ► FEATURES

- Measures soil resistivity (4-Point)
- Measures ground resistance (2- and 3-Point) Fall-of-Potential method
- Step voltage tests and touch potential measurements
- Auto-Ranging: automatically selects the optimum resistance range and test current
- Designed to reject high levels of noise and interference
- Extremely simple to operate: connect - press - hold - read
- LED on faceplate informs operator of high input noise, high auxiliary rod resistance and fault connections
- Large easy-to-read backlit display
- Battery powered (Model 4620)
- AC powered with rechargeable NiMH battery pack (Model 4630)
- Rugged dustproof and rainproof field case
- Can also be used for continuity tests on bonding
- Color-coded terminals

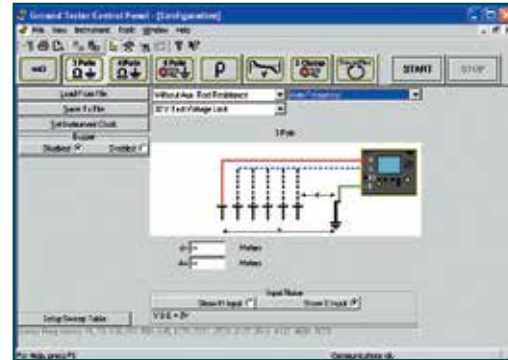
CATALOG NO.	DESCRIPTION
2130.43	Ground Resistance Tester Model 4620 (Digital, 4-Point, Battery Powered)
2130.44	Ground Resistance Tester Model 4630 (Digital, 4-Point, Rechargeable Battery)
2135.19	Ground Resistance Tester Model 4620 Kit – 150 ft (Model 4620 and Catalog #2135.35)
2135.20	Ground Resistance Tester Model 4620 Kit – 300 ft (Model 4620 and Catalog #2135.36)
2135.21	Ground Resistance Tester Model 4620 Kit – 500 ft (Model 4620 and Catalog #2135.37)
2135.22	Ground Resistance Tester Model 4630 Kit – 150 ft (Model 4630 and Catalog #2135.35)
2135.23	Ground Resistance Tester Model 4630 Kit – 300 ft (Model 4630 and Catalog #2135.36)
2135.24	Ground Resistance Tester Model 4630 Kit – 500 ft (Model 4630 and Catalog #2135.37)
<b>Accessories (Optional)</b>	
2130.60	Tape Measure (100 ft)
2135.35	Test Kit for 3-Point Testing – 150 ft
2135.36	Test Kit for 4-Point Testing – 300 ft
2135.37	Test Kit for 4-Point Testing – 500 ft
2135.38	Ground Test Kit for 3-Point Testing (Supplemental for 4-Point testing – includes two 100 ft color-coded leads, one 30 ft lead (green), two 14.5" T-shaped auxiliary ground electrodes and soft carrying bag)
2130.59	Calibration Checker – 25Ω for Models 3620, 3640, 4500, 4610, 4620 and 4630

## Typical DataView® Functional Displays

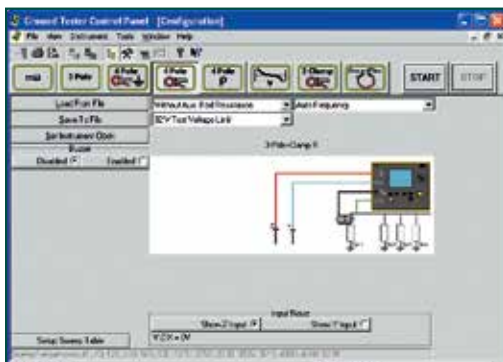
### 2 Clamp Method Setup



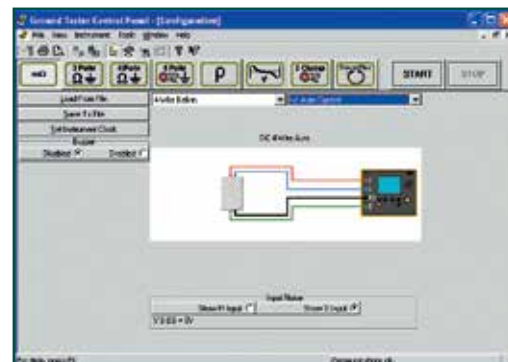
### Fall-of-Potential, Step-Touch Potential



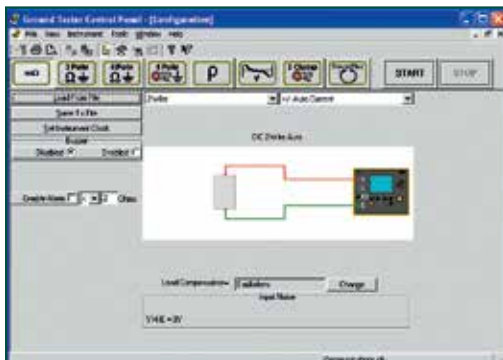
### Selective 3-Point Testing of Multiple Rods



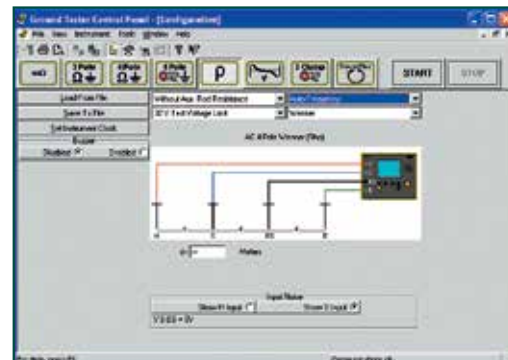
### 4-Point Bonding For Very Low Resistance



### Bonding



### Soil Resistivity



## OPTIONAL KITS

### 150 ft Kit

#### Catalog #2135.35

Test Kit for 3-Point testing includes carrying bag, two 150 ft color-coded leads on spools (red/blue), two 5 ft color-coded leads (red/blue), one 30 ft lead (green), two 14.5" T-shaped auxiliary ground electrodes, one set of five spaded lugs and 100 ft tape measure.



### 300 ft Kit

#### Catalog #2135.36

Test Kit for 4-Point testing includes carrying bag, two 300 ft color-coded leads on spools (red/blue), two 5 ft color-coded leads (red/blue), two 100 ft color-coded leads (green and black), four 14.5" T-shaped auxiliary ground electrodes, one set of five spaded lugs and 100 ft tape measure.



### 500 ft Kit

#### Catalog #2135.37

Test Kit for 4-Point testing includes carrying bag, two 500 ft color-coded leads on spools (red/blue), two 5 ft color-coded leads (red/blue), two 100 ft color-coded leads (green and black), one 30 ft lead (green), four 14.5" T-shaped auxiliary ground electrodes, one set of five spaded lugs and 100 ft tape measure.



## **X-ON Electronics**

Largest Supplier of Electrical and Electronic Components

*Click to view similar products for [aemc](#) manufacturer:*

Other Similar products are found below :

[2118.79](#) [2118.82](#) [6417](#) [MN261](#) [MN106](#) [2119.02](#) [MD301](#) [SR601](#) [MN103](#) [1017.84](#) [6610](#) [SR752](#) [MS3474W10-6P](#) [MS3456L16-10SY-LC](#)  
[SL261](#) [BR07](#) [2118.73](#) [MS3475W14-4S-LC](#) [MS3456L20-14SX-LC](#) [MS3450W22-2SY-LC](#) [MS3475W14-4SW](#) [D38999/26WD5PN](#)