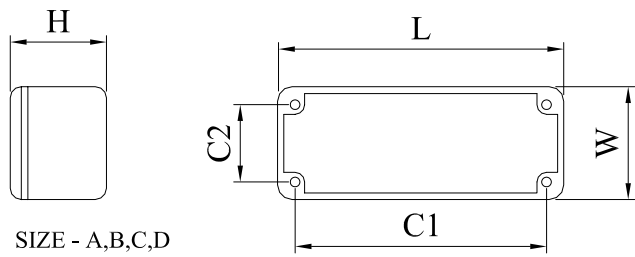
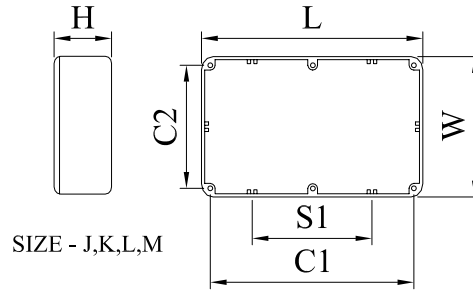


A range of diecast boxes in various sizes, manufactured in a robust aluminium alloy. These lightweight enclosures provide excellent screening against EMI/RFI and are therefore ideal housing for electronic components and circuits. The close fitting lid is secured using countersunk screws.

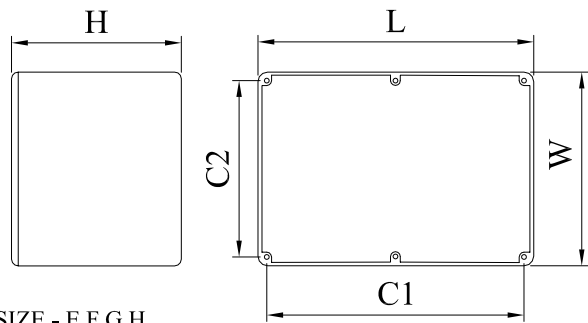
Material  
 Box & Lid :Aluminium Alloy LM24  
 Screws :Mild Steel Zinc Plated M3.5x9  
 Finish :60-80 microns Powder coating  
 Admiralty Grey BS4800 REF18B25  
 Black RAL 9005



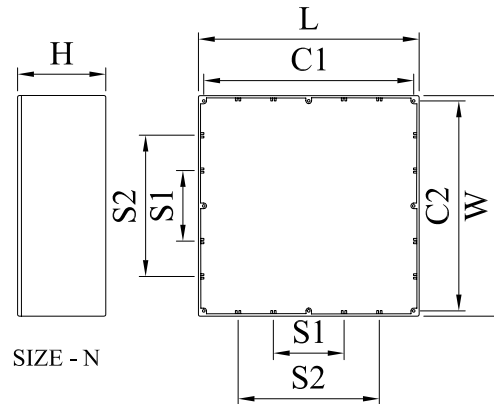
SIZE - A,B,C,D



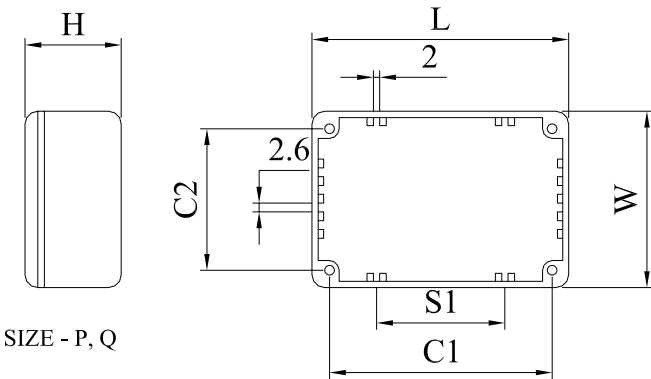
SIZE - J,K,L,M



SIZE - E,F,G,H



SIZE - N



SIZE - P, Q

Add letter after order code for colour required.  
 Black - E

TAPER 1.5° PER SIDE

Part No	Size	L	W	H	C1	C2	S1	S2	Wall Thickness	Taper
461-0010	A	88.9	34.9	29.5	79.4	25.4			1.5mm	Base to Lid
461-0020	B	114.5	64	29.5	104.6	54.1			1.5mm	Lid to Base
461-0030	C	115.7	90.5	54.9	104.6	79.4			1.5mm	Lid to Base
461-0040	D	115.3	64.5	54.9	103.4	52.5			2.0mm	Lid to Base
461-0050	E	171.5	120.6	54.9	160.5	109.6			2.0mm	Base to Lid
461-0060	F	171.5	120.6	105.7	160.5	109.6			2.0mm	Base to Lid
461-0070	G	222.3	146	55	211.5	135.3			2.0mm	Base to Lid
461-0080	H	222.3	146	105.7	211.5	135.3			2.0mm	Base to Lid
461-0090	J	275	175	65	264	164	132		2.0mm	Base to Lid
461-0100	K	139.7	101.6	76	128.7	90.6	64.4		2.0mm	Base to Lid
461-0110	L	165	127	76	154.1	116	77		2.0mm	Base to Lid
461-0120	M	120	100	35	108.3	88.2	50		2.0mm	Base to Lid
461-0130	N	250	250	100	238	238	80	160	2.5mm	Base to Lid
461-0140	P	80	55	25	70.5	45.5	40		1.5mm	Base to Lid
461-0150	Q	60	55	30	50.5	45.5	30		1.5mm	Base to Lid

DrgNo 461 SERIES

TITLE POWDER COATED GREY DIECAST BOX

ALL DIMENSIONS IN MM  
 ANGLES IN DECIMAL DEGREES



ISSUE 2

GENERAL SPECIFICATION FOR 461 SERIES

CUSTOMER

FILTER REF

Aprvd Date 25/11/03

Aprvd By MC

Drwn by BS

Scale: NTS

Sheet 1 / 1



## X-ON Electronics

Largest Supplier of Electrical and Electronic Components

*Click to view similar products for [deltron](#) manufacturer:*

Other Similar products are found below :

[610-0700](#) [651-0800](#) [342-0000](#) [W127G](#) [066541F](#) [066542D](#) [W205C](#) [W106C](#) [611-0700](#) [717-0400](#) [456-0020](#) [460-0070](#) [479-0020-5](#) [486-121209-66](#) [480-C010](#) [490-170805E-68](#) [459-0080](#) [459-0140](#) [590-0700](#) [MDU14S](#) [4MP2616](#) [461-0050](#) [571-0400-01](#) [480-C040](#) [462-0020E](#) [4DR3522](#) [487-261612E-66](#) [486-261609-68](#) [466-0050](#) [356-0200](#) [702-0500](#) [711-0500](#) [552-0600](#) [WHT](#) [800-0400](#) [487-261609E-66](#) [487-221209E-68](#) [462-0040A](#) [461-0070](#) [456-0030](#) [461-0070E](#) [490-040503A-68](#) [486-S68-2616](#) [4ELM6](#) [483-0100](#) [483-0030](#) [480-0010](#) [466-0150](#) [455-0020](#) [461-0030](#) [461-0090](#)