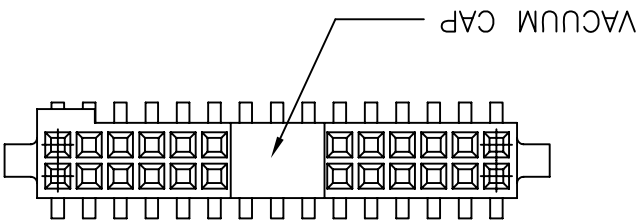
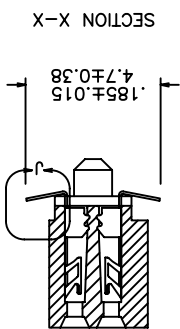
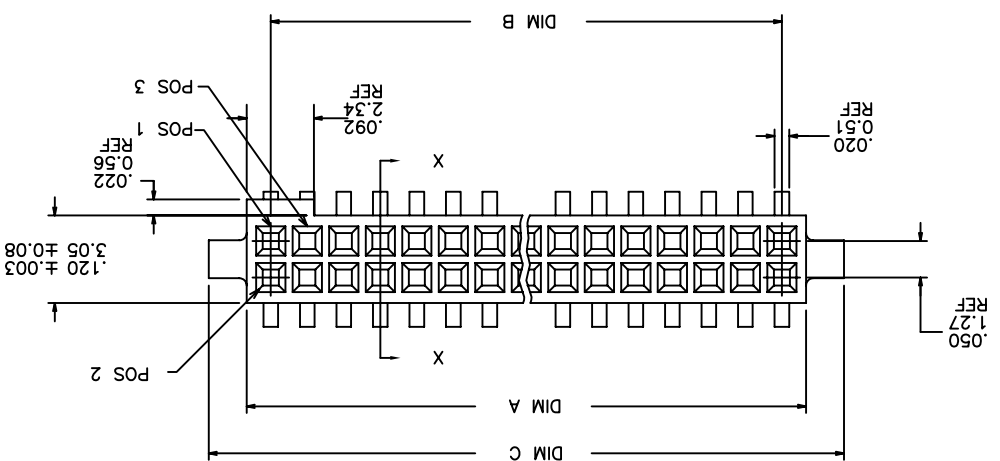
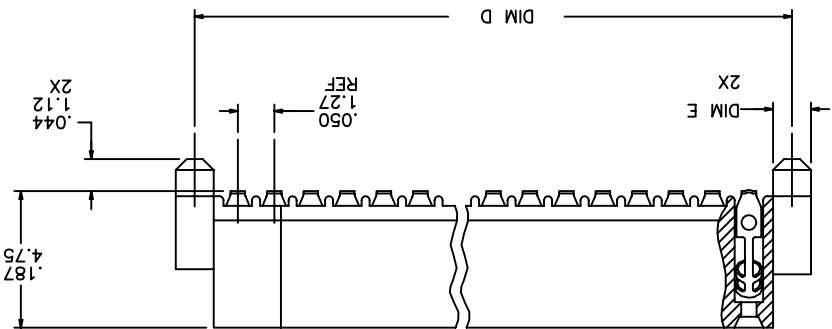
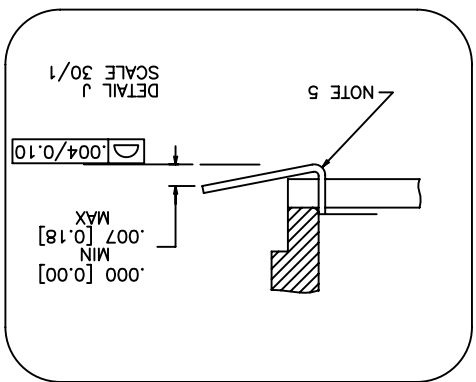


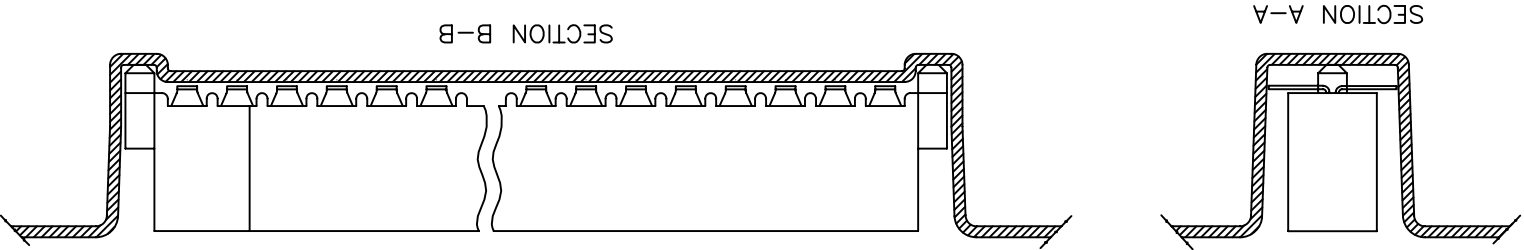
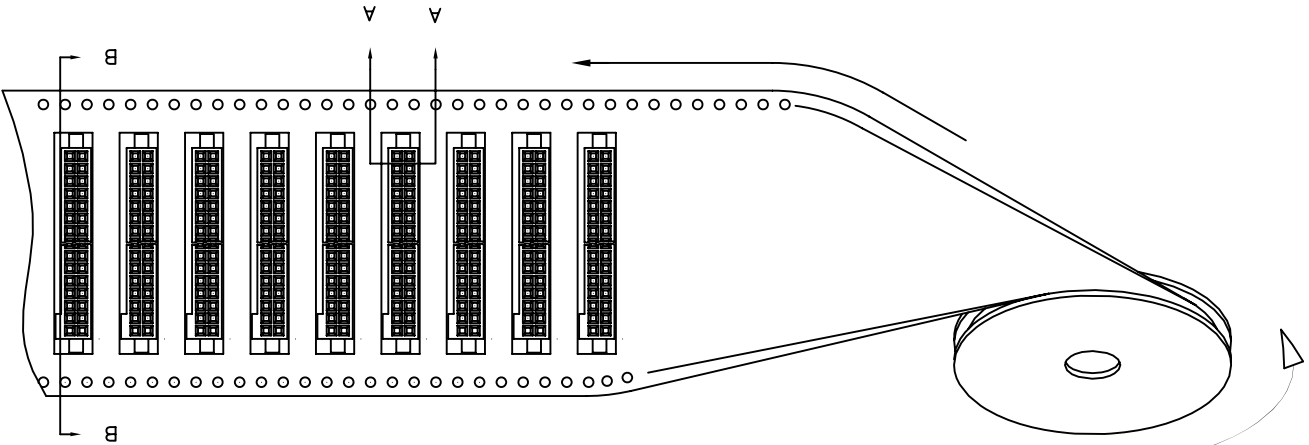
PRODUCT NUMBER  
SEE TABLE



mat'l. code		surface		ISO 1302		tolerance		ISO 406		projection		product family		RIB CAGE	
itr		ecn no		dr		date		tolerances unless otherwise specified		title		W/LOC. & POL. FEATURE		sheet 1 of 3 size	
AH BX-N-19819		JH		12/22/14		angles		near		scale 1:1		.050cc VERT. SMT.		87024	
AD M09-0058		CMR		4/06/09		dr		M. CLOUSER		6/26/91		type		Product Customer Drawing	
AF N10-0174		YOH		6/17/10		chr		B. BARUFFALO		6/26/91		APPR		B. BARUFFALO	
AG BX-N-010202		YO		2/8/12		app		B. BARUFFALO		6/26/91		sheet		revision	
index		sheet		1		2		3		4		5		6	

UNREELING  
DIRECTION

REFERENCE ONLY  
TAPES WIDTH'S 32mm AND ABOVE HAS BOTH FEED TRACKS,  
BELOW 32mm HAS TOP FEED TRACK ONLY.



mat'l. code		-		itr		ecn no		dr		date		tolerances unless otherwise specified	
surface		ISO 1302		projection		ISO 406		ISO 1101		title		product family	
angles		XXF.01/XXF.03		INCH/MM		.050cc VERT. SMT.		W/LOC. & POL. FEATURE		scale 1:1		FCI	
vz		XXXF.005/XXXF.013		in		XXXF.005/XXXF.013		XXXF.0020/XXXF.0051		dr		M. CLOUSER 6/26/91	
sheet		revision		chr		B. BARUFFALO 6/26/91		app		B. BARUFFALO 6/26/91		type	
index		sheet		engr		B. BARUFFALO 6/26/91		app		B. BARUFFALO 6/26/91		Product Customer Drawing	

PRODUCT NO.	SIZE	DIM A	DIM B	DIM C	DIM D	DIM E	SPECIAL PACKAGING	TAPE WIDTH	TAPE WIDTH	PIECES PER REEL
87024-605	2 X 5	.266/6.756	.200/5.08	.370/9.398	.3200/8.128	Ø.0520/1.321	NOTE 6	24mm	12mm	750
-610	2 X 10	.516/13.106	.450/11.43	.620/15.748	.5700/14.478	Ø.0520/1.321	NOTE 6	24mm	12mm	750
-610P	2 X 10	.516/13.106	.450/11.43	.620/15.748	.5700/14.478	Ø.0520/1.321	NOTE 8	24mm	16mm	400
-615	2 X 15	.766/19.456	.700/17.78	.870/22.098	.8200/20.828	Ø.0520/1.321	NOTE 6	44mm	12mm	500
-620	2 X 20	1.016/25.806	.950/24.13	1.120/28.448	1.0700/27.178	Ø.0520/1.321	NOTE 6 & 7	44mm	12mm	500
-625	2 X 25	1.266/32.156	1.200/30.48	1.370/34.798	1.3200/33.528	Ø.0520/1.321	NOTE 6	56mm	12mm	500
-630	2 X 30	1.516/38.506	1.450/36.83	1.620/41.148	1.5700/39.878	Ø.0520/1.321	NOTE 6 & 7	56mm	12mm	500
-635	2 X 35	1.766/44.856	1.700/43.18	1.870/47.498	1.8200/46.228	Ø.0520/1.321	NOTE 6	72mm	12mm	500
-640	2 X 40	2.016/51.206	1.950/49.53	2.120/53.848	2.0700/52.578	Ø.0520/1.321	NOTE 6 & 7	72mm	12mm	500
-645	2 X 45	2.266/57.556	2.200/55.88	2.370/60.198	2.3200/58.928	Ø.0520/1.321	NOTE 6	72mm	12mm	500
-650	2 X 50	2.516/63.906	2.450/62.23	2.620/66.548	2.5700/65.278	Ø.0520/1.321	NOTE 6 & 7	88mm	12mm	500
-625S	2 X 25	1.266/32.156	1.200/30.48	1.370/34.798	1.3200/33.528	Ø.0394/1.00	NOTE 6	56mm	12mm	500

NOTES:

① HOUSING MATERIAL: LCP GLASS FILLED FLAME RETARDANT PER UL 94V-0

② TERMINAL MATERIAL: BeCu

③ TERMINAL PLATING:

30u"/.76µm MIN HARD GOLD OR GXT OVER IN ON CONTACT ZONES, OTHERWISE GOLD FLASH OR UNPLATED.

100u"/2.54µm MIN TIN OVER IN SOLDERING ZONES,

APPLICATION INFORMATION:

A. RECOMMENDED MOUNTING PAD PATTERN IS SHOWN IN FIGURE "A".

B. MATING PINS TO BE .0176/0.447 TO .0181/0.459 DIA.

C. MATING PIN TIPS TO BE IN TRUE POSITION TO MATING GRID WITHIN .006/0.15 DIA.

D. SUGGESTED MATING PIN LENGTH .130/3.30

⑤ LEAD TIPS TO BE ABOVE HEEL UP TO .007/0.18 MAX. COPLANARITY TO BE MEASURED AT LOWEST POINT (HEEL).

6. IF L/P/N THE PRODUCT MEETS EUROPEAN UNION DIRECTIVES AND OTHER COUNTRY REGULATION AS DESCRIBED IN GS-22-008.

7. THE HOUSING WILL WITHSTAND EXPOSURE TO 260°C PEAK TEMPERATURE FOR 20 SECONDS IN A CONVECTION, INFRA-RED OR VAPOR PHASE FLOW OVEN. SEE APPLICATION NOTES/PROCEDURES IF THEY ARE AVAILABLE.

8. PRODUCT SPEC PER BUS-12-087.

9. PN DEFINE:

87024-605XXXLF  
 LEAD FREE  
 WITH "TR": TAPE AND REEL+CAP  
 WITHOUT "CT": TUPE+CAP  
 WITH "P": THE CARRIER'S PITCH IS 16MM  
 WITHOUT "P": THE CARRIER'S PITCH IS 12MM  
 WITH "S": THE POST'S DIAMETER IS 1.00MM, FOR FIGURE B  
 WITHOUT "S": THE POST'S DIAMETER IS 1.321MM, FOR FIGURE A

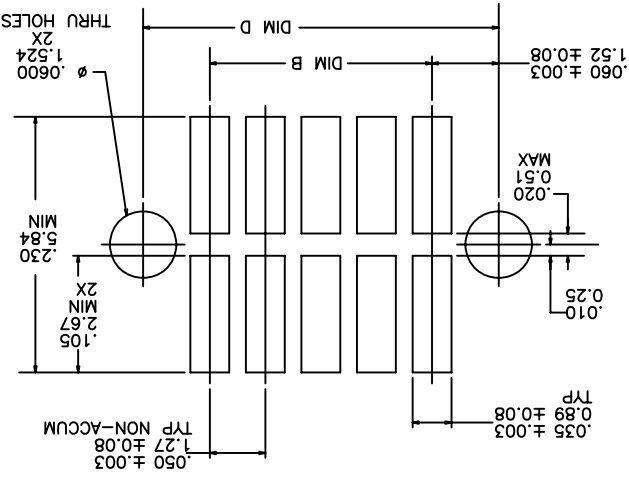


FIGURE A  
P.C.B. LAYOUT  
RECOMMENDED

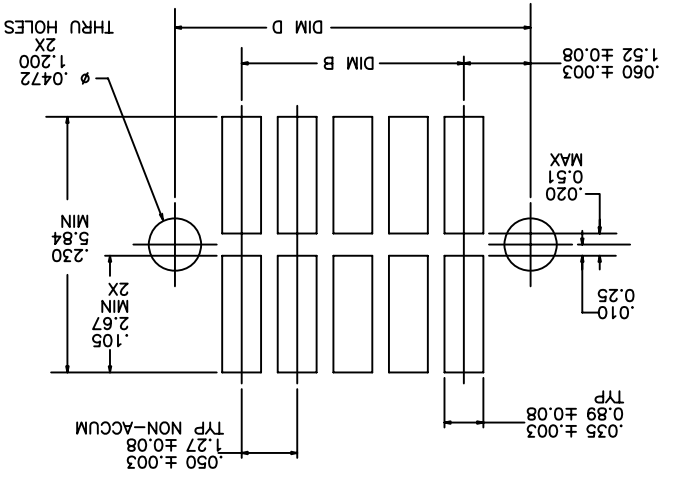


FIGURE B  
P.C.B. LAYOUT  
RECOMMENDED

matl. code		ISO 1302	ISO 406	ISO 1101	tolerance unless otherwise specified
itr	ecn no	dr	date		
AH	angles	linear	XX±.01/XX±.03	XX±.005/XX±0.13	XX±.0020/XX±0.051
σ±z					
dr	M. CLOUSER	6/26/91			
engr	B. BARUFFALO	6/26/91			
chr	B. BARUFFALO	6/26/91			
app	B. BARUFFALO	6/26/91			
sheet	revision				
index	sheet				

## X-ON Electronics

Largest Supplier of Electrical and Electronic Components

*Click to view similar products for [Headers & Wire Housings](#) category:*

*Click to view products by [FCT Electronics](#) manufacturer:*

Other Similar products are found below :

[95000-104TRLF](#) [10135584-644402LF](#) [DF62W-EP2022PCA](#) [95000-106TRLF](#) [DF62W-2022SCA](#) [DF62W-EP2022PC](#) [2203348](#) [DF62W-2022SC](#) [1084018](#) [1029039](#) [1084017](#) [802-10-012-10-002000](#) [1112640](#) [1112639](#) [000-34000](#) [0009482033](#) [0009507031](#) [57102-S06-03LF](#) [57202-S52-04LF](#) [PCN6-15S-2.5E](#) [0039019024](#) [58102-G61-06LF](#) [582553-1](#) [0009485154](#) [0009508121](#) [0022285053](#) [0050291907](#) [018731A](#) [LY20-4P-DT1-P1E-BR](#) [02.125.8002.8](#) [60101931](#) [60598-1 \(Cut Strip\)](#) [M1625-3R/100](#) [61062-3](#) [61082-181009](#) [636-1427](#) [638009-1](#) [641938-9](#) [641991-4](#) [644168-1](#) [647662-1](#) [65039-019ELF](#) [65781-018](#) [65781-047](#) [65817-002LF](#) [65817-015LF](#) [65863-015LF](#) [66207-023LF](#) [67016-026LF](#) [67046-001LF](#)