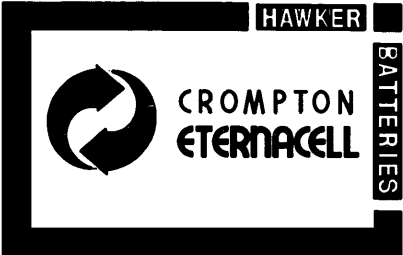


# TECHNICAL DATA

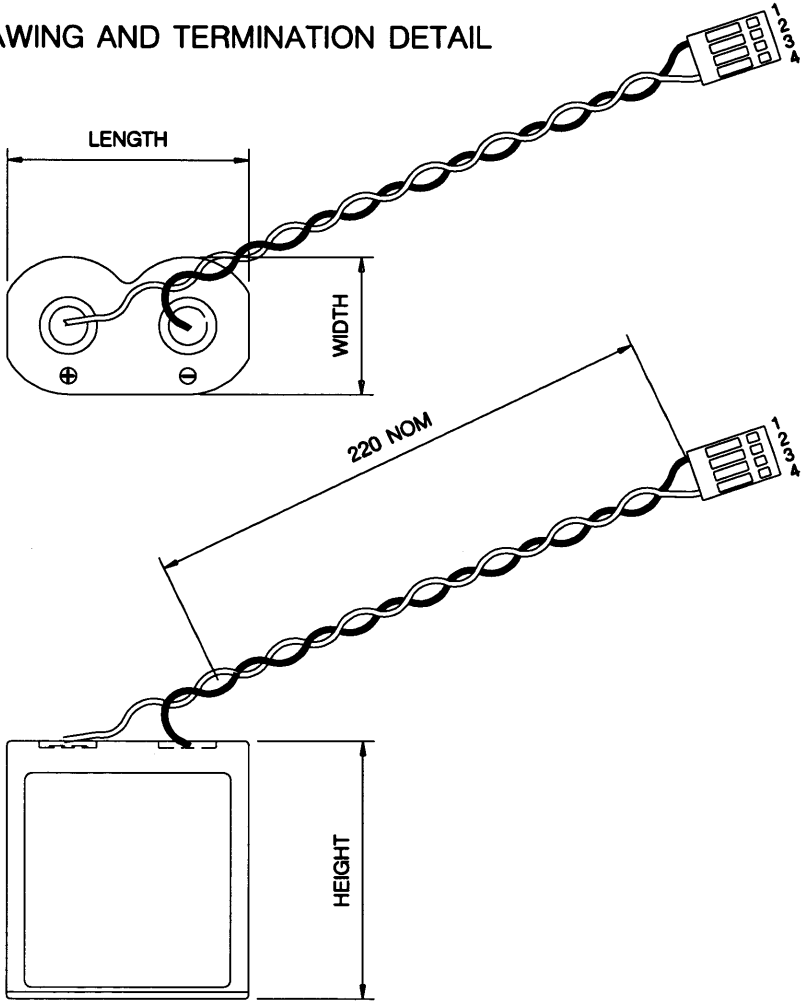


## LITHIUM THIONYL CHLORIDE BATTERY TYPE T223A/J

Size Length.....	34.0mm max
Width.....	19.5mm max
Height.....	36.0mm max
Weight .....	45.0gms
Construction.....	2 x T32 series cells fitted with 15K $\Omega$ 1/4 Watt resistor, and 2 series diodes in a moulded ABS case, which has a flammability rating of UL94V

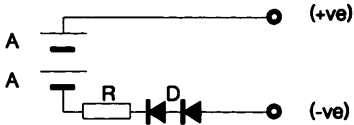
Voltage .....	Nominal 6.0 volts
Capacity .....	Nominal 1.5Ah
Shelf life at 20°C. $\pm$ 5°C.....	10 years
Operating Temperature Range...	-55°C. to +85°C.
Self discharge at 20°C. $\pm$ 5°C.....	Typical 2% pa
Connector .....	Berg

### OUTLINE DRAWING AND TERMINATION DETAIL



- 1. NEGATIVE TERMINAL
- 2. NOT CONNECTED
- 3. POLARIZING KEY
- 4. POSITIVE TERMINAL

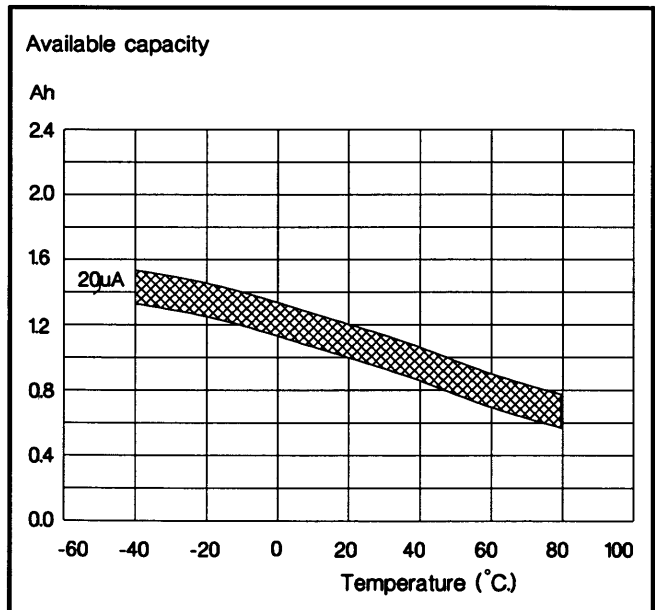
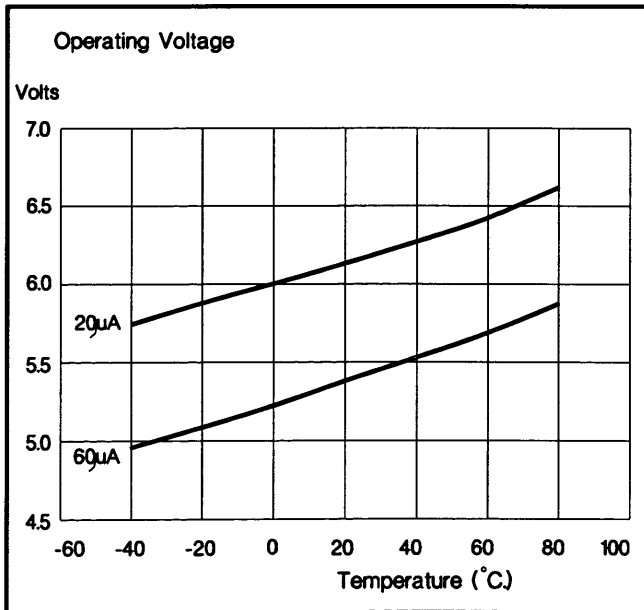
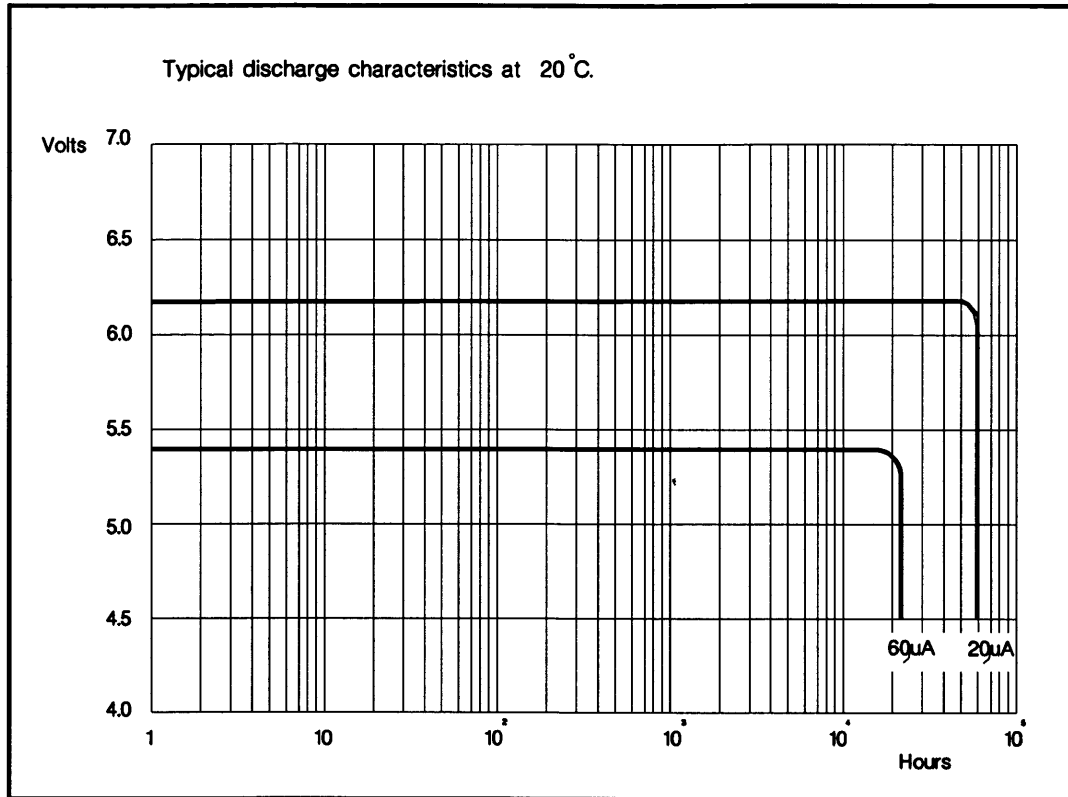
### SCHEMATIC WIRING DIAGRAM



- A. T32/8AA cell
- R. 15K $\Omega$  1/4 Watt resistor
- D. 75mA Diode IN4148



# TYPICAL ELECTRICAL PERFORMANCE



CROMPTON ETERNACELL LTD, RIVER DRIVE, SOUTH SHIELDS, ENGLAND, Tel (0191 456 1451) Fax (0191 456 6383)

Crompton Eternacell Ltd. adopt a policy of constant improvement and reserve the right to change specifications without notice.

## **X-ON Electronics**

Largest Supplier of Electrical and Electronic Components

*Click to view similar products for [saft manufacturer](#):*

Other Similar products are found below :

[MGN7485](#) [058639H](#) [MFN7477](#) [093888C](#)