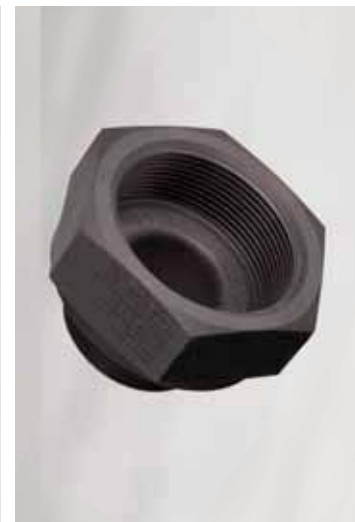


Redapt thread conversion products

The safety you rely on.

Introducing Crouse-Hinds by Eaton

The leader in electrical products for industrial, marine and commercial applications worldwide.



Crouse-Hinds
by **EAT•N**



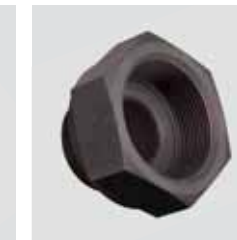
The safety you rely on.

Delivering world-class reliability and safety in high consequence harsh and hazardous environments

Only Eaton's Crouse-Hinds Business can deliver...

- Protection and safety of people and assets around the world with unsurpassed reliability and quality in every product we offer
- Industry-leading innovation and product efficiency
- Product solutions designed and certified for global specifications
- Best-in-class, global sales and customer service teams that provide local support

The Eaton advantage.



Crouse-Hinds remains the brand that stands for safety in the harshest of environments when power management is most critical. While it all began with the Condulet®, the Crouse-Hinds brand has grown into the premier name for a comprehensive portfolio of solutions for high consequence harsh and hazardous environments.

And now, the next phase in the evolution of the brand you trust: Crouse-Hinds joins the leading Eaton portfolio of reliable, efficient and safe electrical power management solutions.

More protection. More technology. Expect more.

Crouse-Hinds

by **EATON**

Part numbering system

Codes

Page No.	Product	Digits 1 & 2
Adaptors & reducers		
14-17	AD	Adaptor
14-17	RD	Reducer
18	TA	Swivel - in-line male x female
18	TC	Swivel - in-line female x female
18	TD	Swivel - in-line male x male
18	TP	Swivel - 90° male x female
18	TQ	Swivel - 90° female x female
18	TR	Swivel - 90° male x male
19	AY	'Y' adaptor
20	AT	'T' adaptor
21	AR	90° adaptor
22	AM	Male x male adaptor
23	AF	Female x female adaptor
24-25	AI	Insulated adaptor
Stopping Plugs		
26-27	PD	Dome head plug
28	PA	Type A plug
28	PB	Type B plug
29	PH	Hex head plug
30	PX	Hollow hex head plug
Breather Drains		
31	DP	Breather drain (Exe)
32	BD	Breather drain (Exde)
Accessories		
33	SB	Stopper box (rigid conduit)
34	UN	Union (MxF)
34	UF	Union (FxF)
35	AE	Earth lead adaptor
37	EP	Pear earth tag
36	ET	Threaded earth plate
38	LN	Locknut
38	LE	Earthing locknut
39	N	Nipples - consult sales for coding
39	CO	Couplers
39	MB	Bushes - male bush long
39	MS	Bushes - male bush short
39	FB	Bushes - female bush
40	SR	Serrated washer
40	SW	IP sealing washer
42	FX	Stopper box (flexible conduit)

Certification	Digit 3
U	Exd I and IIC & Exe I and IIC
D	Exd I and IIC
E	Exe I and IIC
Z	Industrial

Material	Digit 4
1	Brass
2	Mild steel
3	Stainless steel
4	Glass filled nylon
5	Aluminium
6	Nylon 6
7	Red fibre

Plating	Digit 5
0	Unplated
1	Electroless nickel
2	Zinc
6	Chromatise

Example

Digits 1 & 2	Digit 3	Digit 4	Digit 5	Digits 6 & 7	Digits 8 & 9
AD	- U	- 1	- 1	- 29	- 04
Adaptor	Exd/e certified	Brass	Nickel-plated	1/2" NPT (male)	M20 (female)

Always quote male thread first.

Male thread – digits 6 & 7, female thread – digits 8 & 9 Note: threadform codes below to be used for both male and female threads.

Metric	ET imperial conduit	NPT	NPSM	ISO pipe parallel (BSPP)	ISO pipe taper (BSPT)	PG
03 M16	17 5/8" ET	29 1/2" NPT	42 1/2" NPSM	55 1/2" BSPP	68 1/2" BSPT	79 PG7
04 M20	18 3/4" ET	30 3/4" NPT	43 3/4" NPSM	56 3/4" BSPP	69 3/4" BSPT	80 PG9
05 M25	19 1" ET	31 1" NPT	44 1" NPSM	57 1" BSPP	70 1" BSPT	81 PG11
06 M32	20 1 1/4" ET	32 1 1/4" NPT	45 1 1/4" NPSM	58 1 1/4" BSPP	71 1 1/4" BSPT	82 PG13.5
07 M40	21 1 1/2" ET	33 1 1/2" NPT	46 1 1/2" NPSM	59 1 1/2" BSPP	72 1 1/2" BSPT	83 PG16
08 M50	22 2" ET	34 2" NPT	47 2" NPSM	60 2" BSPP	73 2" BSPT	84 PG21
09 M63	23 2 1/2" ET	35 2 1/2" NPT	48 2 1/2" NPSM	61 2 1/2" BSPP	74 2 1/2" BSPT	85 PG29
10 M75	24 3" ET	36 3" NPT	49 3" NPSM	62 3" BSPP	75 3" BSPT	86 PG36
11 M80 x 2.0	ET Special	37 3 1/2" NPT	50 3 1/2" NPSM	63 3 1/2" BSPP	76 3 1/2" BSPT	87 PG42
12 M85 x 2.0		38 4" NPT	51 4" NPSM	64 4" BSPP	77 4" BSPT	88 PG48
13 M90 x 2.0		NT Special	NS Special	BP Special	BT Special	PG Special
14 M100 x 2.0						
15 M110 x 2.0						
BZ M120 x 2.0						
MT Special						

Shroud product coding (p.41) Please note the product coding for shrouds differs slightly from the main coding.

Digits 1 & 2 product	Digit 3 certification	Digit 4 material	Digit 5 colour	Digits 6 & 7 thread size	Digits 8 & 9 defaults to '00'	Digits 10 to 13 shroud size
SH Shroud	Z Industrial*	R PVC (standard)	B Black	01 M10	00	S005 5
		Q PVC (low smoke and fume - LSF)	G Grey	02 M12		S05A 5A
		N PVC (flame retardant - FR)	R Red	03 M16		S006 6
		V PCP	W White	04 M20		S007 7
			L Blue	05 M25		S008 8
				06 M32		S08B 8B
				07 M40		S009 9
				08 M50		S010 10
				09 M63		S011 11
						S012 12
						S12E 12E
						S013 13

Example

Digits 1 to 3	Digit 4	Digit 5	Digits 6 & 7	Digits 8 & 9	Digits 10 to 13
SHZ	- R	- B	- 04	- 00	- S005
Shroud	Standard PVC	Black	M20	Default	Shroud Size 5

Example

Digits 1 to 3	Digit 4	Digit 5	Digits 6 & 7	Digits 8 & 9	Digits 10 to 13
SHZ	- V	- R	- 07	- 00	- S008
Shroud	PCP	Red	M40	Default	Shroud Size 8

IP sealing washers - SWZ Series



Type SWZ

Technical specification

Part number: Please refer to page 10 for part numbering system

Dimensions of metric versions *For information only - shape of product / outer diameters may change.

Size	O/D	Thickness
M16	26.00	1.50
M20	30.50	1.50
M25	38.00	1.50
M32	42.60	1.50
M40	56.00	1.50
M50	64.00	1.50
M63	78.00	1.50
M75	90.00	1.50

Materials

- Nylon
- Red fibre
- Teflon (PTFE)
- Neoprene

Threadforms

- Metric
- NPT
- NPSM
- PG
- ISO pipe (BSP)
- ET

Serrated washers - SRZ Series



Type SRZ

Technical specification

Part number: Please refer to page 10 for part numbering system

Dimensions of metric versions *For information only - shape of product / outer diameters may change.

Size	O/D	Thickness	
		Min	Max
M16	25.50	1.00	2.50
M20	32.50	1.50	3.00
M25	39.50	1.50	3.75
M32	49.50	1.50	4.50
M40	64.50	1.50	4.50
M50	70.80	1.50	4.50
M63	100.00	1.50	4.50
M75	112.00	1.50	4.50

Features

- Serrated washers available in stainless steel and zinc plated steel
- IP sealing washers available in nylon, red fibre, Teflon (PTFE) and neoprene
- Various threadforms available

Benefits

- IP sealing washers are fitted between entry components and the equipment to maintain ingress protection
- Serrated washers can be used to provide additional fixing security in bonding an entry component to the equipment

Materials

- 316 stainless steel

Threadforms

- Metric
- NPT
- NPSM
- PG
- ISO pipe (BSP)
- ET

X-ON Electronics

Largest Supplier of Electrical and Electronic Components

Click to view similar products for [redapt manufacturer](#):

Other Similar products are found below :

[RDU100504](#) [RDU100604](#) [IPWSHRRFM16](#) [P/S.ETAGM16](#) [ADU100429](#) [SW-Z-6-0-00-04](#) [DOME HD PLUGM20](#) [RDU103004](#)
[ADU102904](#) [SW-Z-6-0-00-03](#) [IPWSHRRFM20](#) [IPWSHRRFM25](#)