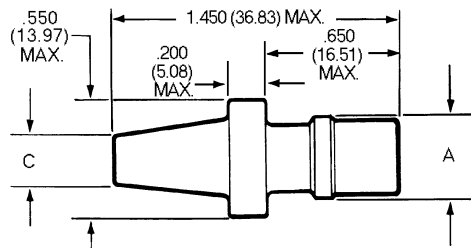


Dimensions

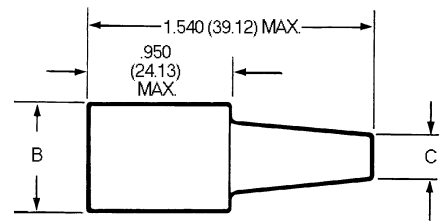


Sure Seal Plugs & Receptacles

1 Circuit

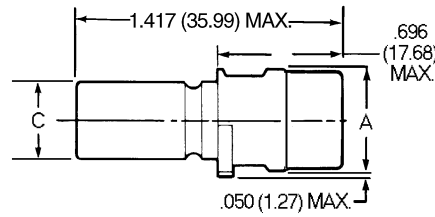


Plug P/N 120-1832-000

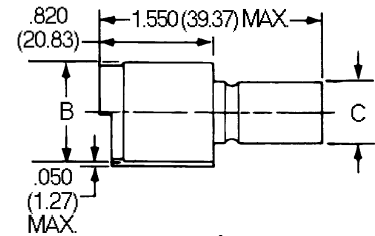


Receptacle P/N 120-1833-000

2 – 4 Circuit



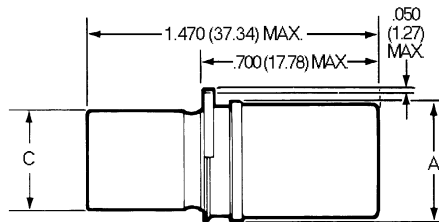
Plug



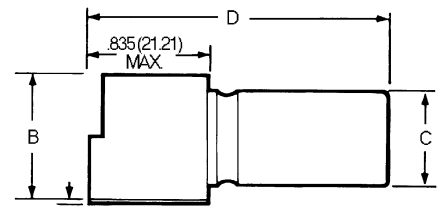
Receptacle

| Body Identifier | Plug Number (P) | Receptacle No. (R) | A Dia. Max. | B Dia. Max. | C Max. |
|-----------------|-----------------|--------------------|--------------|--------------|--------------|
| SS-1 P/R | 120-1832-000 | 120-1833-000 | .380 (9.65) | .550 (13.97) | .230 (5.84) |
| SS-2 P/R | 120-1807-000 | 120-1804-000 | .550 (13.97) | .710 (18.03) | .430 (10.92) |
| SS-3 P/R | 120-1808-000 | 120-1805-000 | .600 (15.24) | .760 (19.30) | .500 (12.70) |
| SS-4 P/R | 120-1809-000 | 120-1806-000 | .600 (15.24) | .760 (19.30) | .500 (12.70) |

5 – 10 Circuit



Plug



Receptacle

| Body Identifier | Plug Number | Receptacle No. | A Dia. Max. | B Dia. Max. | C Max. | D Max. |
|-----------------|--------------|----------------|---------------|---------------|--------------|---------------|
| SS-5 P/R | 120-1841-000 | 120-1839-000 | 1.010 (25.65) | 1.160 (29.46) | .810 (20.57) | 1.610 (40.89) |
| SS-6 P/R | 120-1842-000 | 120-1840-000 | 1.010 (25.65) | 1.160 (29.46) | .810 (20.57) | 1.610 (40.89) |
| SS-7 P/R | 120-1873-000 | 120-1874-000 | 1.010 (25.65) | 1.160 (29.46) | .810 (20.57) | 1.610 (40.89) |
| SS-8 P/R | 120-1865-000 | 120-1866-000 | 1.135 (28.83) | 1.285 (32.64) | .935 (23.75) | 1.610 (40.89) |
| SS-9 P/R | 120-1867-000 | 120-1868-000 | 1.135 (28.83) | 1.285 (32.64) | .935 (23.75) | 1.610 (40.89) |
| SS-10 P/R | 120-1869-000 | 120-1870-000 | 1.135 (28.83) | 1.285 (32.64) | .935 (23.75) | 1.610 (40.89) |

X-ON Electronics

Largest Supplier of Electrical and Electronic Components

Click to view similar products for [sure seal manufacturer](#):

Other Similar products are found below :

[120-1874-000](#) [BAND1](#) [BAND2](#) [BAND4](#) [BAND3](#) [120-8551-102](#) [120-1869-000](#) [120-1870-000](#) [120-8552-102](#) [120-1809-000](#) [317-8657-000](#)
[120-1806-000](#) [317-1398-000](#) [120-1808-000](#) [317-1397-000](#) [120-1805-000](#) [031-8703-100](#) [120-1807-000](#) [120-1804-000](#) [330-8672-100](#) [225-0093-000](#) [030-2196-001](#)