

Customer: ALPS ELECTRIC EUROPA GmbH

No. F3852497M

Date: Nov. 22, 1994

Attention:

Your ref. No: 22 3005

Your Part. No: STRS 30102

SPECIFICATIONS

ALPS:

MODEL STRS30102K

Spec. No.:

Sample No.: F3852497M

RECEIPT STATUS

RECEIVED

By. Date 25/10/94

Signature PSL

Name

Title

ALPS ELECTRIC CO., LTD.

HEAD OFFICE
1-7, YUKIGAYA-OHTSUKA-CHO,
OHTA-KU, TOKYO 145 JAPAN

DSG'D M. Fujita

APP'D H. Ito

ENG. DEPT. DIVISION

Sales

SPECIFICATIONS

1. THIS SPECIFICATIONS APPLY TO RS3011114 POTENTIOMETERS.

2. CONTENTS OF THIS SPECIFICATIONS.

4S3018-302M
4S0008-45M
4S0001-200M, 4S0001-201M
S3018G402A

3. MARKING

· MARKING ON ALL UNITS
DATE CODE, RESIST. VALUE, TAPER, TRADE MARK, JAPAN

4. REMARKS

· NOTES

· Marking ⇒ in specifications shows standard and condition for application.

CLASSNO	TITLE
	STANDARD TYPE POTENTIOMETER (SLIDE)

ELECTRICAL

1. Overall resistance :

Overall resistance tolerances : ±20 %

Unit : KΩ

5	10	20	50	100	200	250	500	1,000
---	----	----	----	-----	-----	-----	-----	-------

2. Minimum resistance :

Unit : Ω

Overall resistance (KΩ)	5,10	20,50	100	200, 250	500	1000
Across term. 1-2	30	50	100	200	300	500
Across term. 2-3	50	70	120	220	320	500

3. Taper : ALPS "B" (SBS48)

4. Rated power : 0.2 Watts.

5. Rated voltage : Rated voltage = $\sqrt{P \cdot R}$ (V)

P : rated power (W)

R : nominal overall resistance (Ω)

When the rated voltage exceeds the maximum operating voltage the maximum operating voltage shall be the rated voltage.

Maximum operating voltage : A.C. 200V , D.C. 10 V


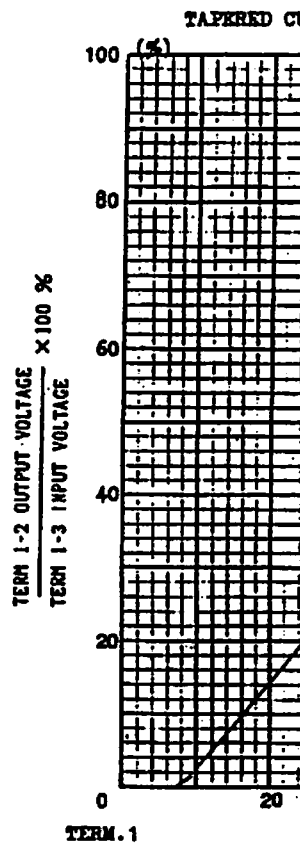
6. Dielectric test : Units shall be designed to withstand 300 volts A.C. 50 Hz R.M.S. between resistance elements and case for a period of one minute without damage or arcing.

7. Insulation resistance : Greater than 100 megohms between resistance elements and case when tested by a 250 volts D.C. insulation resistance meter.

8. Sliding lifetest : 15,000 cycles

• Lever shall be operable with speed of 20 mm per sec. without noise by static electricity.

USED ON
30 mm TRAVE
ALPS ELECTRIC
1-7 YUKIG.
OTA-KU TOYO

TERM. 1

NOTES: PERCENT VOL CHECK FO

50

ALPS ELECTRIC CO., LTD.					
APPA	CHKD.	DSGD.	TITLE	SPECIFICATIONS	
Aug. 30/74		Aug. 30/74		DOCUMENT NO.	
				4S3018-302M	
SYMB	DATE	APPD	CHKD	DSGD	

SYMB	DATE	APPD	CHKD	DSGD
------	------	------	------	------

CLASSNO. TITLE STANDARD TYPE POTENTIOMETER (SLID.)

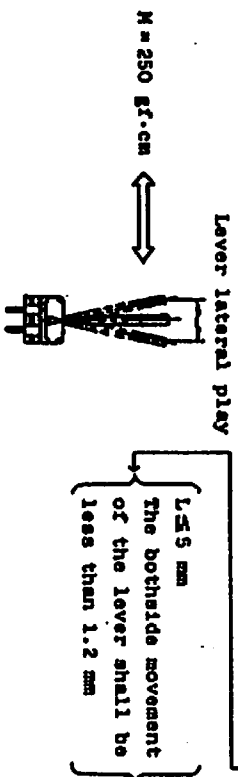
MECHANICAL

1. Travel : Specified in particular figure.
 2. Operating force : 30-250 gf (Note 1)
 3. Starting force : Operating force + 100 gf max. (Note 1)
- (Note 1) Measuring temperature : 5°C - 35°C

Measuring point :
 → : 5 mm from lever end (Lever length > 6 mm)
 : 1 mm from lever end (Lever length ≤ 6 mm)
 Sliding speed : 20 mm per sec.

4. Stop strength :
 → 5 kgf at a position 5 mm from mounting surface.
 (Lever length > 6 mm)
 5 kgf at a position 2 mm from mounting surface.
 (Lever length ≤ 6 mm)

5. Lever lateral play :
 When an alternating bending moment of 250 gf·cm is applied perpendicular to the direction of lever travel, the bothside movement of the lever shall be less than 2. (2X L / 20) mm
 L: Lever length on the measurement point from mtg. surface.
 (Note 2) Exempt warping of insulated lever.



6. Lever strength :
 (1) To be resistant with 5 kgf static force of pull or push applied to lever in thrust direction for 10 seconds without damage.

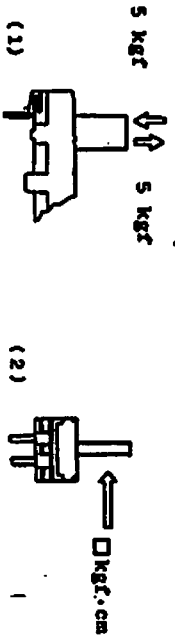
ALPS ELECTRIC CO., LTD.

APPR.	CHKD.	ISSUED	TITLE
APR 27/71		APR 30/71	SPECIFICATIONS
DATE	APPROV.	DATE	APPROV.
DOCUMENT NO.		4 S 0 0 0 8 - 4 5 M	
		(1/2)	

(ALPS ELECTRIC CO. LTD. 45008-45M)

CLASSNO. TITLE STANDARD TYPE POTENTIOMETER (SLIDE)

- (2) To be resistant with following static force applied to lever in vertical direction to lever driving for 10 seconds without damage.
 - ① 2 kgf·cm over : in case of pot., mounted to chassis with screws.
 - ② 0.5 kgf·cm over : in case of pot., mounted to P.C.B. only with terminals.
 - ③ 2 kgf·cm over : in case of pot., mounted to P.C.B. with both terminals and mounting plate.



7. Lever inclination and twist :
 Twist : 2° max.
 Inclination : 2° max.
 Inclination : 2° max.

8. Resistance to soldering heat : 3 sec. max. at 300°C

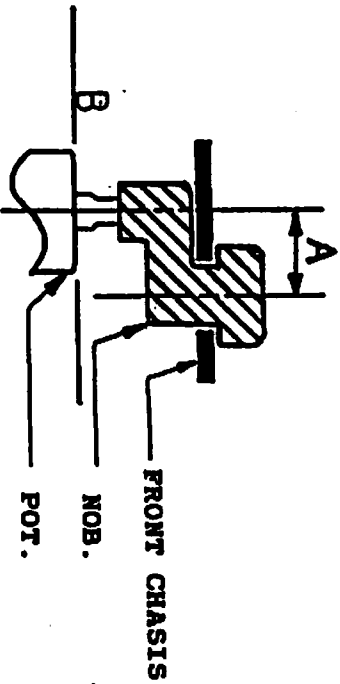
ALPS ELECTRIC CO., LTD.

APPR.	CHKD.	ISSUED	TITLE
APR 27/71		APR 30/71	SPECIFICATIONS
DATE	APPROV.	DATE	APPROV.
DOCUMENT NO.		4 S 0 0 0 8 - 4 5 M	
		(2/2)	

(ALPS ELECTRIC CO. LTD. 45008-45M)

PRECAUTION IN USE

1. If it will be used the operating point away from the center line of the lever, it should be shorter as possible.
2. About the length of lever
If conditions permit, it is advisable to use the shortest possible lever. The longer the length up to operating point, the more unfavorable slide feeling will be given.



3. Regarding the operation of the lever, please consider the above mentioned, and make sure nothing is wrong with the operation under installing in your appliance that you plan to use our products actually.

APPD.	CHKD.	DSCD.	DATE	APRD.	CASD.	INSD.
ALPS ELECTRIC CO., LTD.			APPD. Aug 10 '91 CHKD. Sep 9 '91 DSCD. Sep 9 '91			
			SLIDE POTENTIOMETER DOCUMENT NO. 450001-200M			



FOLLOW THE NEXT CONDITIONS FOR SOLDERING

1. Solder

63 % Sn solder specified in JIS Z3282.

2. Board in Use

Double-faces through-hole board or
Single-face copper laid laminate board.
Plate thickness (t) = 1.6 mm

3. In the Case of Dip Soldering

(1) State of potentiometer

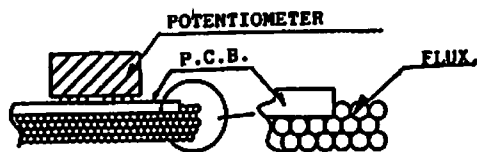
Position a lever in the vicinity of center.

(2) Specific Gravity of Flux

0.83±0.01 (foaming type)

(3) Height of Flux face

A level of the upper face of flux for reaching the position at a half of the plate thickness of printed board. (Fig.1)
Further, no flow of flux invading on the surface of printed board on the side of installing potentiometer is allowed.



(Fig. 1)

(4) Preheat Condition

100°C MAX., within 1 minute
(Temperature on the side of installing printed board is designated.)

(5) Soldering Condition

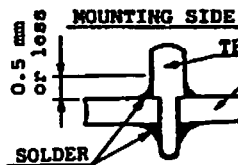
Solder temperature; 260°C MAX.
Soldering period ; within 5 seconds
Time of soldering ; only one time is permitted

4. In the Case of Manual Soldering

Solder temperature ; 300°C MAX.
Soldering period ; within 3 seconds
Time of soldering ; only one time is permitted

5. Matters to Be Noted

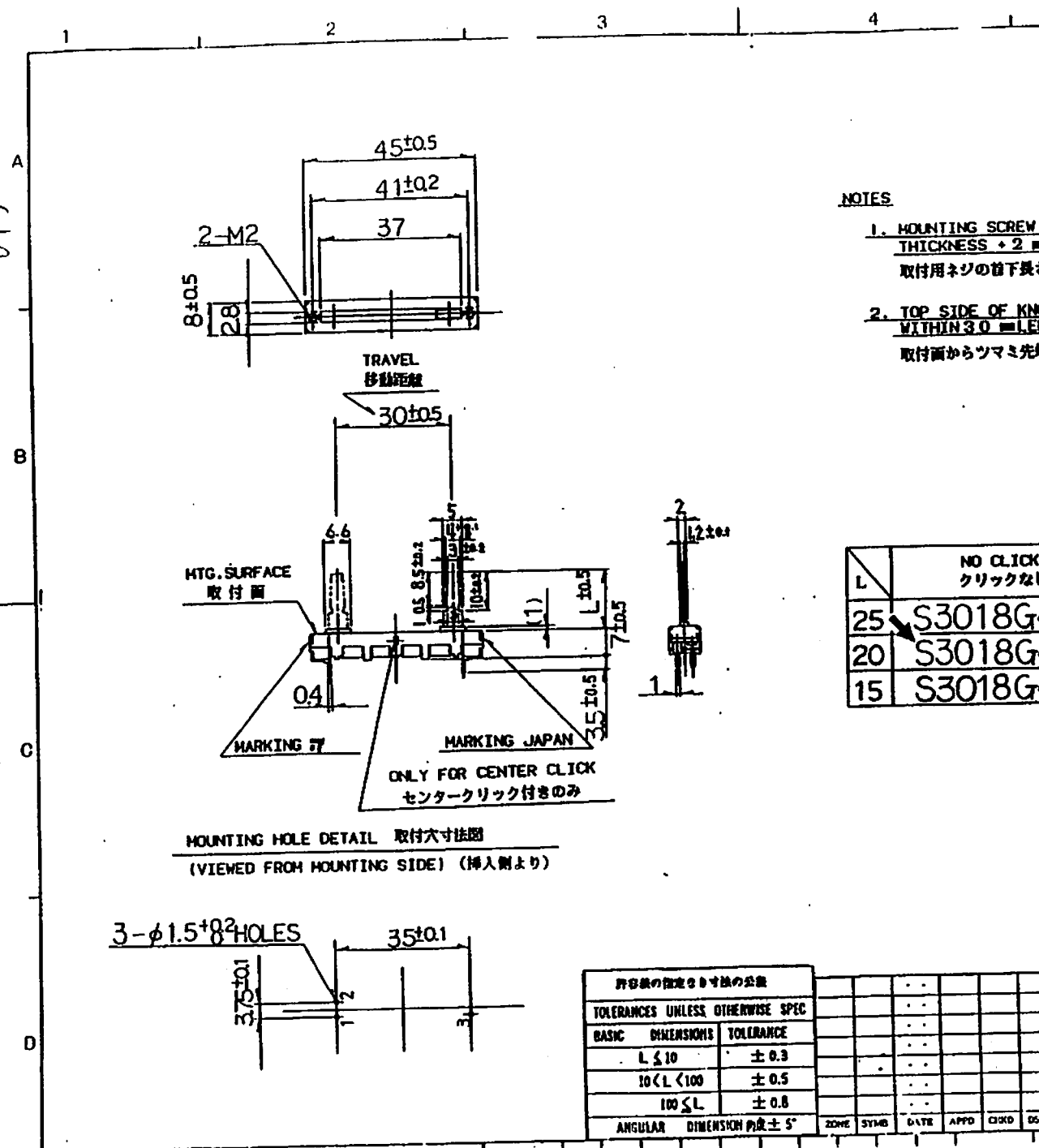
- (1) Do not add any strain. For instance, force terminals being heated features due to gap between resistant
- (2) Avoid use of double-hole plating to a possible. If it is and install a land face opposite to the potentiometer.
- (3) Use caution to solder from rising up to of installing potentiometer take place in terms (Fig. 2)
- (4) In the case of less or more may be resoldering part. (



- (5) The grade of infl potentiometer depends installing position solder bath etc. abnormal state und carried out at pr

..
..
..
..
..
..
..
SYMA	DATE	APPD	CHKA	ESCA	APPD. Sep 15	

015



NOTES

1. MOUNTING SCREW THICKNESS +2mm
取付用ネジの首下長さ
2. TOP SIDE OF KNIFE WITHIN 3.0mm LENGTH
取付面からツマミ先端

L	NO CLICK クリックなし
25	S3018G4
20	S3018G4
15	S3018G4

TOLERANCES UNLESS OTHERWISE SPEC		ZONE	SYMB	DATE	APPD	CHKD	DSGD
BASIC DIMENSIONS	TOLERANCE						
L ≤ 10	± 0.3						
10 < L < 100	± 0.5						
100 ≤ L	± 0.8						
ANGULAR DIMENSION	内成 ± 5°						

X-ON Electronics

Largest Supplier of Electrical and Electronic Components

Click to view similar products for [alps manufacturer](#):

Other Similar products are found below :

[EC11E1814404](#) [EC12E1220301](#) [SCZA2A0100](#) [SKQRACE010](#) [SLLB310300](#) [SLLQ110100](#) [SPEE120100](#) [HMSZS1001A](#) [SPVT130101](#)
[RK08H11100UD](#) [SSSU124900](#) [EC11J0924802](#) [EC11B15202AA](#) [SPVF110100](#) [SCZA1A0300](#) [SLLB310500](#) [SLLQ120100](#) [SDKZ1R0200](#)
[SPVQ811006](#) [PTMBL1912A](#) [RK09K111F15C0B104](#) [RK09K1130D62](#) [SCDG2A0101](#) [SPEF120100](#) [SSSS928500](#) [SSGM680200](#)
[EC11E09244BS](#) [UE200013](#) [SCJB1B0301](#) [RD1010030A](#) [EC10E1260507](#) [RK09L124000Z](#) [RD7081015A](#) [RDCC010002](#) [RK14K12D0-F30-](#)
[C1-C503](#) [RK09L1120A2S](#) [SRBM140700](#) [EC11E18244A5](#) [RS6011Y50K](#) [RK0972210-F30-31-B103](#) [RD1Y50010A](#) [RD1030211A](#)
[SSSS213800](#) [EC35A0930401](#) [RS30H11AA009](#) [SPVQ820502](#) [RK14K12C0A0T](#) [RS45112-0620-C0-P1-A203](#) [RK09K1110B1V](#)
[RK11K1140A3L](#)