

Models 6416 & 6417

Provides high safety level with new ground voltage indication feature



SPECIFICATIONS

MODELS	6416 & 6417		
ELECTRICAL			
Ground Resistance	Measurement Range	Resolution	Accuracy (% of Reading)
Auto-Ranging 1 to 199Ω	0.010 to 0.099Ω	0.001Ω	±1.5% ±0.01Ω
	0.10 to 0.99Ω	0.01Ω	±1.5% ±0.01Ω
	1.0 to 49.9Ω	0.1Ω	±1.5% ±0.1Ω
	50.0 to 99.5Ω	0.5Ω	±2% ±0.5Ω
	100 to 199Ω	1Ω	±3% ±1Ω
	200 to 395Ω	5Ω	±5% ±5Ω
	400 to 590Ω	10Ω	±10% ±10Ω
	600 to 1150Ω	50Ω	20% approx
Current Measurement	0.200 to 0.999mA	1μA	±2% ±50μA
	1.000 to 2.990mA 3.00 to 9.99mA	10μA	±2% ±50μA
	10.00 to 29.90mA 30.0 to 99.9mA	100μA	±2% ±100μA
	100.0 to 299.0mA 0.300 to 0.990A	1mA	±2% ±1mA
	1.000 to 2.990A 3.00 to 39.99A	10mA	±2% ±10mA
Resistance Measurement Frequency	2083Hz		
Current Measurement Frequency	47 to 800Hz		
Loop Impedance Measurement	10 to 100μH; 100 to 500μH		
Current Overload	OL displayed above 39.99Arms		
Communication	Bluetooth connection (Model 6417 only)		
Power Source	4x1.5V LR6 (AA) Alkaline batteries or 4 NiMH batteries; Battery life: 12 hours, or 1440 30-second measurements approx.		



FEATURES

- Ground voltage indication (warns of possible unsafe conditions)
- Large multi-function bright yellow organic LED display (OLED)
- Selectable test frequency (improves accuracy in inductive environments)
- Clamping diameter of 35mm with large jaw design
- Storage of measurements (Ω and/or A, with time-stamping)
Model 6416: up to 300 measurements stored
Model 6417: up to 2000 measurements stored
- Displays stored measurements on the OLED display or via *Bluetooth* (Class 2 - communicates up to 30 ft) to a PC or the Android™ based mobile application (Model 6417)
- Auto Power OFF function
- Alarm function with adjustable set point and buzzer for quick field checks for volts, amps and ohms
- Rugged Lexan® head and body construction resists breakage
- Alarm settings and stored memory information saved during shutdown
- Includes DataView® software for data storage, real-time display, analysis, report generation and system configuration (Model 6417)
- Noise icon and buzzer alert user to presence of dangerous voltage and current levels
- Designed to EN 61010-1, 600V CAT IV safety standards

PRODUCT INCLUDES

Model 6416 includes a hard carrying case, calibration loop, four 1.5V AA batteries and a user manual.

Model 6417 also includes a Bluetooth USB adapter, quick start guide, and a USB stick with DataView® software and user manual.



Models 6416 & 6417

Functional Displays

Disturbance indicator (current) in the loop
 HOLD Function
 Buzzer is displayed when active
 Measurement date/time display
 Advanced Mode selection
 Indicates when the inductive component is negligible in Advanced Mode
 Main display
 Symbols identify the value displayed in Advanced Mode
 Data Storage Mode
 Memory Recall Mode
 Memory index display
 Bluetooth connection indicator (active for 6417 only)

Incorrect jaw closing indicator
 Auto Power OFF displayed
 Battery charge indicator
 4000-count upper measurement display
 Upper display measurement unit
 Main display measurement unit
 Signal for hazardous voltage
 Alarm measurement display unit
 Alarm threshold display
 Alarm threshold indicator

Note: Display shown larger than real size.

Measurement Results



Displays the leakage current and loop impedance at the test frequency

Memory Recall Mode



Measurement storage date-time screen

Alarm



Indicates voltage/current alarm threshold along with the direction of impedance

Ground Voltage



Indicates voltage potential at the point of measurement

Current Disturbance



Indicates that the current is greater than 10A

Impedance Over Range

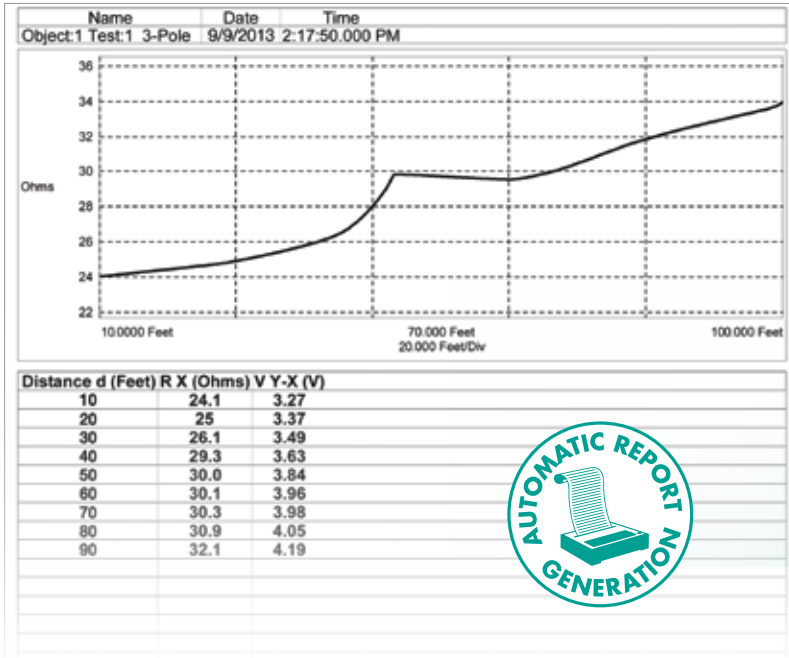


Indicates that the impedance is greater than 1500Ω

CATALOG NO.	DESCRIPTION
2141.01	Ground Resistance Tester Model 6416 (Clamp-On, Alarm, Memory)
2141.02	Ground Resistance Tester Model 6417 (Clamp-On, Bluetooth, Alarm, Memory)

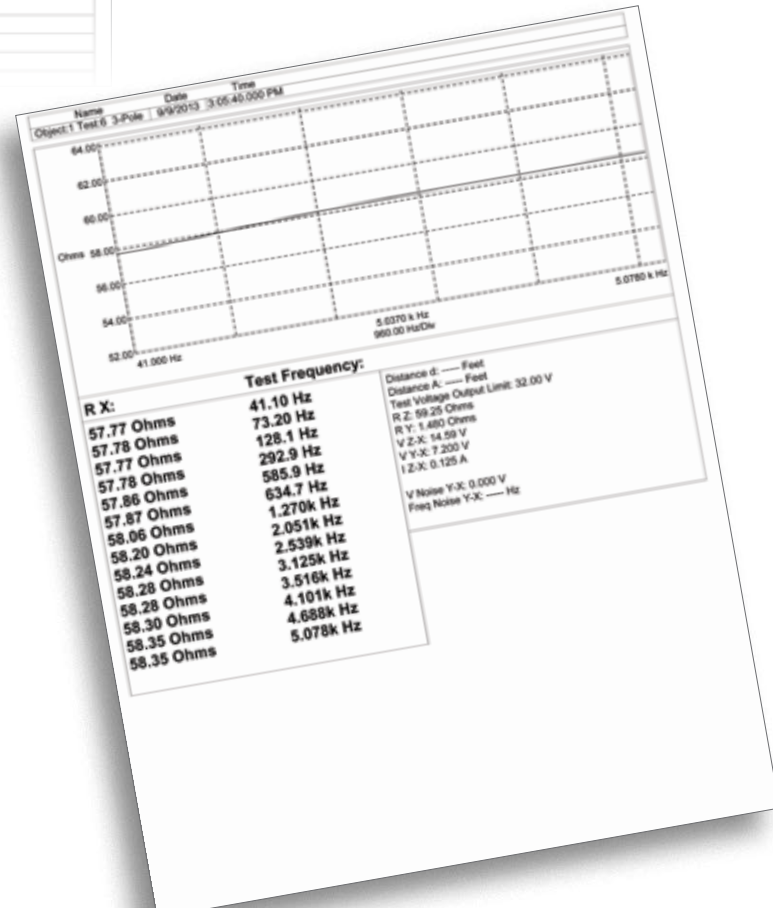
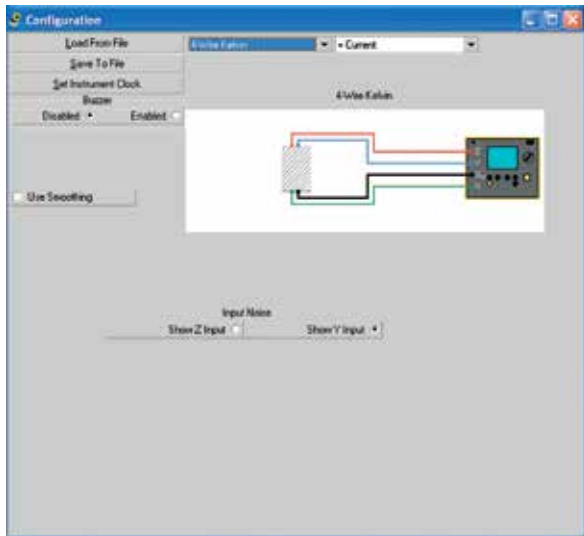
DataView®

Data Analysis and Reporting Software for Ground Testers



Configure all functions of the Models 6417, 6471 & 6472

- Run tests and analyze real-time data from your PC
- Configure all test functions and parameters from your PC
- Customize views, templates and reports to your exact needs
- Display Fall-of-Potential plots, tabular listings of test results, resistance vs. frequency plots, soil resistivity and bonding tests
- Print reports using standard or custom templates you design
- Free updates are available on our website www.aemc.com



DataView® software provides a convenient way to configure and control ground resistance tests from your computer. Through the use of clear and easy-to-use tabbed dialog boxes, all ground tester functions can be configured and tests can be initiated. Results can be displayed in real-time and stored in your PC. Reports may be printed along with the operator's comments and analysis.

X-ON Electronics

Largest Supplier of Electrical and Electronic Components

Click to view similar products for [Test Leads](#) category:

Click to view products by [AEMC](#) manufacturer:

Other Similar products are found below :

[R928010000](#) [R928142000](#) [1301430020](#) [15101](#) [15115](#) [15117](#) [15301](#) [15303](#) [15304](#) [15102](#) [15120](#) [15308](#) [15408](#) [15302](#) [15306](#) [15307](#) [15403](#)
[15407](#) [15409](#) [15501](#) [15506](#) [EM3782-12-7#](#) [EM4702-12-0](#) [BU-1149-A-36-0](#) [BU-1481-E-12-0](#) [BU-1481-E-24-0](#) [2524-A-60](#) [924961-C](#)
[924967-C](#) [LB1F-2R-RED](#) [LB1F-2R-YLW](#) [2500](#) [2501](#) [2524-A-48](#) [2977-J-48](#) [R928051000](#) [R928141000](#) [R928143000](#) [R948131000](#) [BU-](#)
[1449-E-12-2](#) [BU-1480-E-24-0](#) [BU-1481-E-12-2](#) [BU-1481-E-24-2](#) [LB1F-2R-BLK](#) [LB1F-2R-BLUE](#) [EM3542-1#](#) [EM3782-12-8#](#) [6345](#) [6432](#)
[72929-20-2](#)