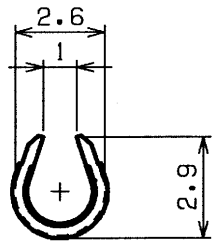
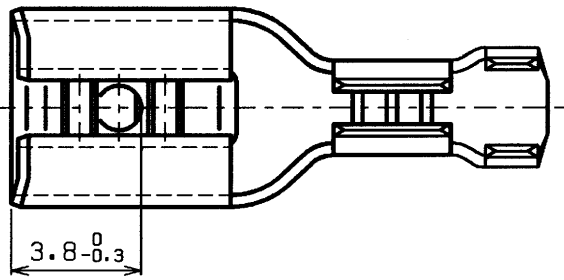
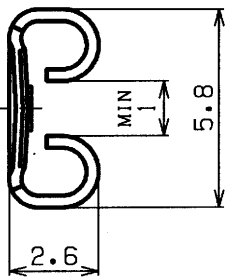


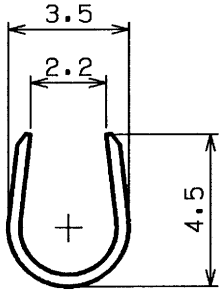
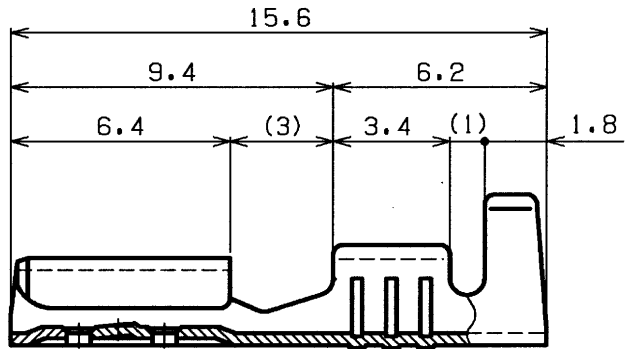
1 2 3 4

REV.	DESCRIPTION	DATE	DESIGNED
△			

A
B
C
D



WIRE BARREL



INSULATION BARREL

UNCONTROLLED ISSUE

NOTE
 1. Unless otherwise specified,
 tolerances are
 $0 < L \leq 3.0; \pm 0.2$
 $3.0 < L \leq 9.0; \pm 0.3$
 $9.0 < L \leq ; \pm 0.5$

PART No.	SURFACE FINISH
LTO-1.0-187N-5	NON PLATING
LTO-1.0T-187N-5	TIN-PLATED

J.S.T. Mfg. Co., Ltd.
16 NOV 2001
 Engineering Centre in Europe

No.		PART NAME		MATERIAL		SURFACE FINISH		REMARKS	
		TERMINAL		BRASS				±0.35	
SIZE	UNIT	SCALE	PROJECTION	DATE	CUSTOMER				
A4	METRIC	5:1		MAR.12.1999					
APPROVED	CHECKED	DESIGNED	DRAWN	SERIES NAME					
J. T	S. K	D. A	M. T	PART No.		LTO-1.0()-187N-5			
JST J.S.T.MFG.CO.,.LTD				DRAWING No.		KRD-22969		RD	

THIS DRAWING/DRAWING IS THE PROPERTY OF J.S.T. (U.K.) LTD. IT MUST NOT BE COPIED OR USED FOR MANUFACTURE WITHOUT WRITTEN PERMISSION FROM J.S.T. (U.K.) LTD.

X-ON Electronics

Largest Supplier of Electrical and Electronic Components

Click to view similar products for [jst](#) manufacturer:

Other Similar products are found below :

[GS3-0.5](#) [GS8-6](#) [B5B-XH-A](#) [B5P-VH](#) [B7B-XH-A](#) [B8B-PH-SM4-TB](#) [BM06B-SRSS-TB](#) [FVGS5-6](#) [B2B-ZR-SM4-TF](#) [B34B-PHDSS-B\(LF\)\(SN\)](#) [B3B-ZR-SM4-TF](#) [B4PS-VH](#) [B6B-PH-SM4-TB](#) [B6B-XH-A](#) [B8B-PH-K-S](#) [B8B-ZR-SM4-TF](#) [B8PS-VH](#) [BM04B-SRSS-TB](#) [IDH-KR-12](#) [10HR-4K](#) [WC-ZE2426](#) [WC-691](#) [WC-122](#) [FVDDF5.5-375A \(LF\)](#) [FVGS12-6 \(LF\)](#) [FVWS2-S3.3 \(LF\)](#) [FVWS5.5-5 \(LF\)](#) [B6PS-VH\(LF\)\(SN\)](#) [FNGS12-6](#) [TWE0.5-8](#) [FVGS4-1 \(LF\)](#) [HILR-06VF-1-S](#) [WC-GVH2630](#) [WC-PUD2](#) [S10B-PH-SM4-TB\(LF\)\(SN\)](#) [B2B-EH-A-TW \(LF\)\(SN\)](#) [B4B-EH-A-TW \(LF\)\(SN\)](#) [B4B-XH-TW \(LF\)\(SN\)](#) [B9B-XH-A](#) [BM02B-GHS-TBT](#) [BM03B-GHS-TBT](#) [BM04B-GHS-TBT](#) [BM06B-GHS-TBT](#) [BM10B-GHS-TBT](#) [10FPZ-SM-TF\(LF\)\(SN\)](#) [YRS-852](#) [B04B-VYHSK-M-1](#) [B4B-PH-SM4-GW-TB](#) [B2B-ZR-SM4-TFT\(LF\)\(SN\)](#) [S24B-PADSS-1\(LF\)\(SN\)](#)