








Euromas II, lid with membrane area

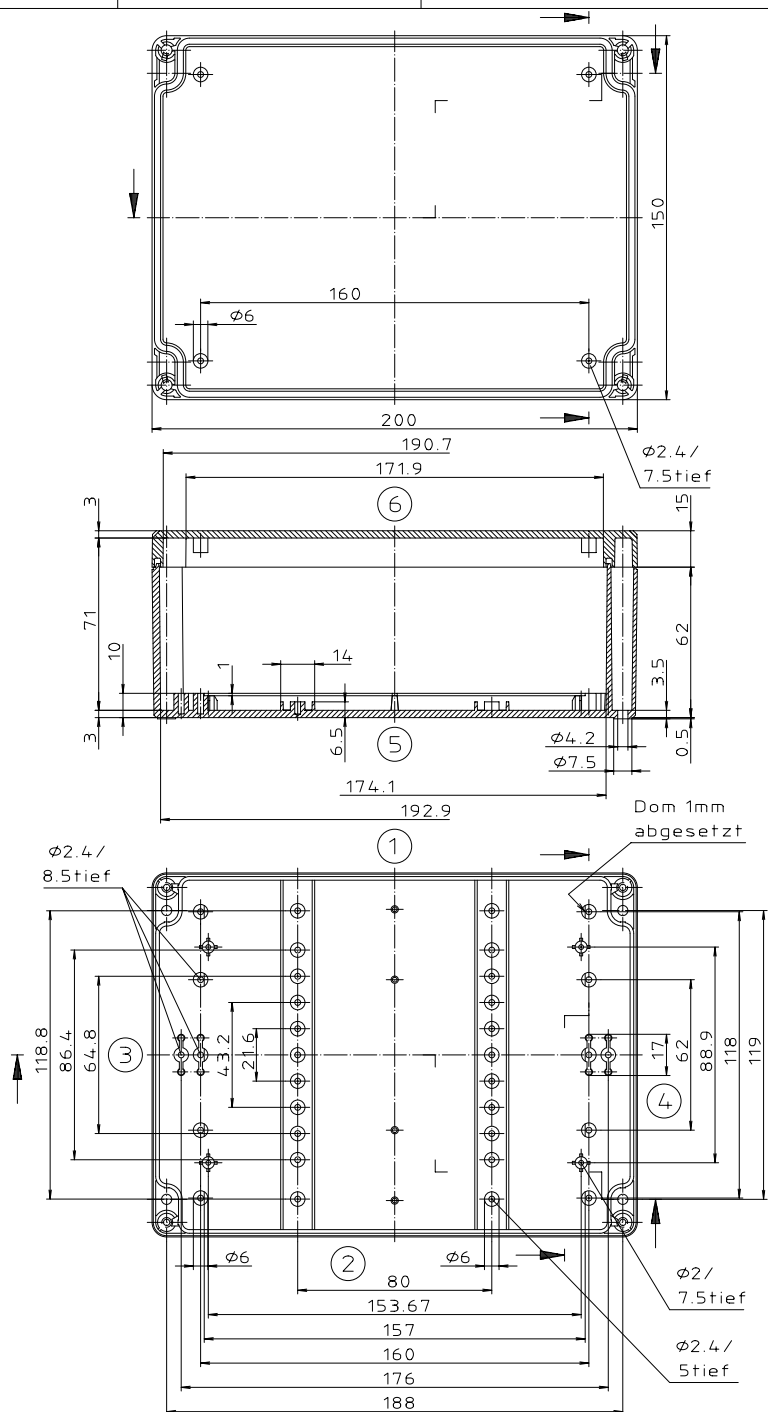
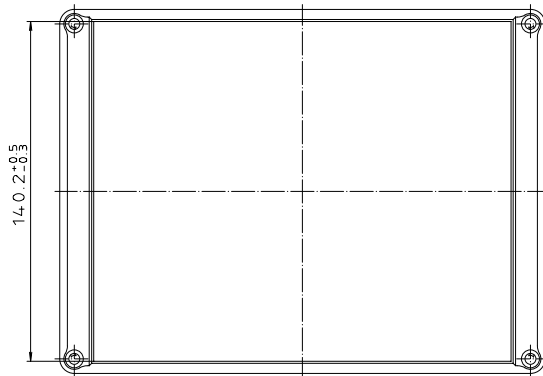
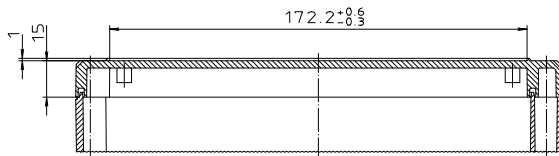
Product no.: 63223200
Length: 200
Width: 150
Height: 77
Material: ABS (acrylonitrile-butadiene-styrene)
Sealing material: Neoprene
Color: light grey
Ingress protection: IP 65
PDF: 
DXF: 

Accessories:

Product no.	Model	Description
22009000	GF	 Rubber feet, Polyurethane, black, 65-75 Shore, 1 set = 4 pcs.
22080000	SA	screw covers (6 pcs), for Euromas II
22010000	EM-WL	 wall bracket set = 4 pcs, for Euromas II
22000800	M	 Mounting plate, for Euromas M/T 223
22151901	TS 15	top hat rail DIN EN 60715 TH 15 - 15 x 5,5 for Euromas II, EM/ET 214/232/237
22321901	TS 32	G-rail DIN EN EN 60715 G 32 - 32 x 15, for Euromas II, EM/ET 214/221/223/232/237
22351901	TS 35	top hat rail DIN EN 60715 TH 35 - 35 x 7,5, for Euromas II, EM/ET 214/221/223/232/237

"SCHULZWEIERER, NACH DIN 84, BEZICHTET"

Ausführung EM/ET 223 F



X-ON Electronics

Largest Supplier of Electrical and Electronic Components

Click to view similar products for [bopla](#) manufacturer:

Other Similar products are found below :

[62240000](#) [63233000](#) [82600124](#) [82703124](#) [94242200.MT1](#) [96033125](#) [96036335](#) [ATPH1850-100 MT6](#) [ATPH1850-250 MT1](#) [94122150.MT2](#)
[34700000](#) [34751000](#) [34910002](#) [ATPH1850-200 MT6](#) [ATPH1865-200 MT6](#) [46400000](#) [46300000](#) [46600000](#) [1118000](#) [1124000](#) [1123000](#)
[62221000](#) [82200124](#) [82600135](#) [84680100 MT1](#) [02244000](#) [B 080805 ABS GRAPHITE GREY](#) [B 140806 ABS GRAPHITE GREY](#) [ATPH](#)
[1850-150](#) [EG1240P](#) [B 140806 ABS LIGHT GREY](#) [B 261706 PC-V0-G GRAPHITE GREY](#) [82200135](#) [T890](#) [02208000](#) [02250000](#) [41250109](#)
[01123000](#) [01104000](#) [92800200](#) [BOP 500 BE4MC-9005](#) [BOP 7.0-9016](#) [BOP 700 BE4MN-9016](#) [BOP 900 BE4MN-9016](#) [ABP 1600-200](#)
[96031115](#) [35110115.HMT1](#) [35110116.HMT1](#) [35110145.HMT1](#) [35310103](#)