



POSITIONAL TOLERANCES FOR BASIC DIMENSIONS FOR FIDUCIALS OR SOME SIMILAR DATUM REFERENCE DEFINED BY THE PCB DESIGNER.

MATERIAL: -		FINISH: -		CUSTOMER DRAWING	
DIMENSIONS: INCHES		TOLERANCES UNLESS OTHERWISE SPECIFIED:		SCALE: 8:1	
0 PLC ±		0 PLC ±		SHEET 2 of 2	
1 PLC ±		1 PLC ±		REV U2	
2 PLC ±		2 PLC ±			
3 PLC ±		3 PLC ±			
4 PLC ±		4 PLC ±			
APPROVALS:		APPROVALS:		APPROVALS:	
DWN M. STORRY 15 FEB 01		CHK S. KAIN 15 FEB 01		NAME: -	
PRODUCT SPEC: -		APPLICATION SPEC: -		SIZE: A2	
WEIGHT: -		CAGE CODE: 00779		DRAWING NO: 1589483	
RESTRICTED TO: -		RECEPTACLE ASSEMBLY, HORIZONTAL SURFACE MOUNT, TWO ROW DUAL-LOBE, PLASTIC OR METAL		APPLICABLE TO: -	

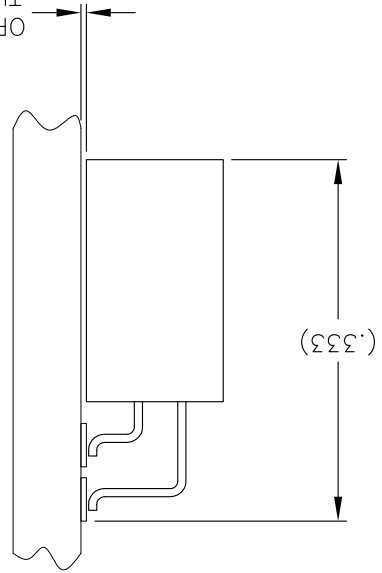
THIS DRAWING IS A CONTROLLED DOCUMENT.

DMN M. STORRY 15 FEB 01

CHK S. KAIN 15 FEB 01

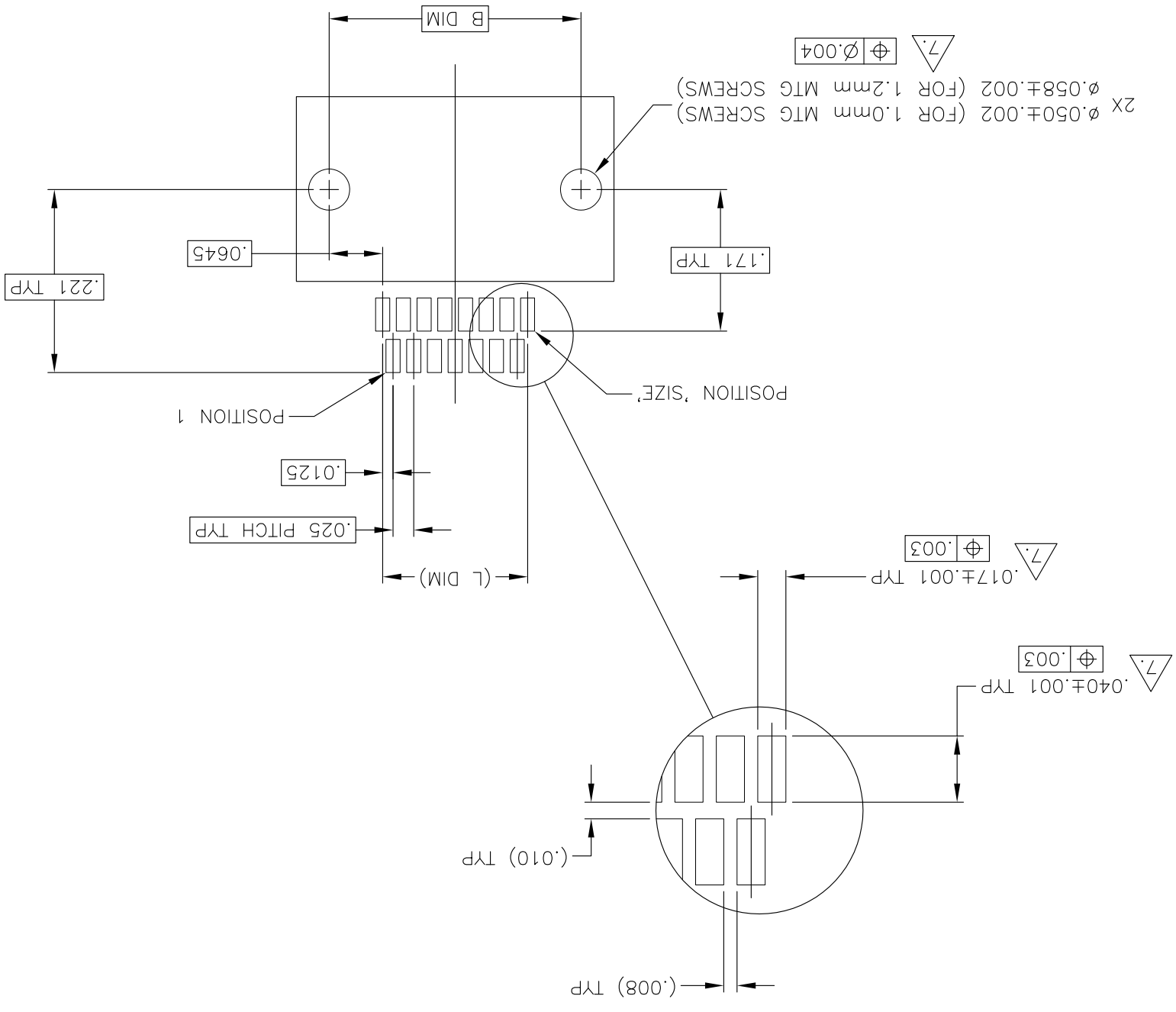
NAME: -

OPTIONAL (.005) THICK ADHESIVE

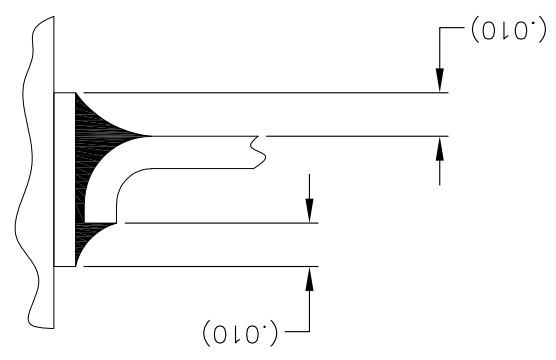


TYPICAL PCB LAYOUT

SIZE 15 SHOWN FOR REFERENCE



TYPICAL FOOT PLACEMENT ON SOLDER PAD



1589483

LOC	DF	DO	P	LTR	DATE	DWN	APVD

REVISIONS

1

2

3

4

THIS DRAWING IS UNPUBLISHED. RELEASED FOR PUBLICATION ALL RIGHTS RESERVED.

Copyright - - By - -

X-ON Electronics

Largest Supplier of Electrical and Electronic Components

Click to view similar products for [Rectangular Mil Spec Connectors](#) category:

Click to view products by [TE Connectivity](#) manufacturer:

Other Similar products are found below :

[006-1169-16](#) [CSR31343-0001-00000](#) [CSR31346-0001-A0001](#) [CSR31899-0001-00000](#) [CSR31900-0001-A0001](#) [CTJ-3D-05](#) [CTS-S16/16](#)
[M55302/57A36X](#) [M55302/58-A70Y](#) [65002-062](#) [65008-D08](#) [CY4602-000](#) [732-8020-01](#) [732-8021-02 B](#) [77058-22-55PN](#) [81542-20](#)
[86.030.0053.0](#) [1241346-1](#) [RM252-020-311-2900](#) [DMC-M 08-16 SNE](#) [1589051-4](#) [BACC65CAMA](#) [BACC65CAMN](#) [BACC65CP1PN](#)
[BACI10BC1220PN](#) [18023-9](#) [HSB-D4S03DM222X](#) [2217548-1](#) [891-009-15SA2-BRT1T](#) [SIM2S100A](#) [1604996-2](#) [SMD25PN90L-4055](#)
[1925036-4](#) [220A012-25225-0](#) [22628-10-6P-791](#) [CSR31343-0001-A0001](#) [CSR31899-0001-A0001](#) [CSR31900-0001-00000](#) [33526M11-08PD](#)
[RE04-212S](#) [CTD160E01F-6148](#) [CTJ112E03B](#) [CTJ122E02D-8000](#) [CTJ-3D-12](#) [CTJ920E06N-513](#) [CTJ920E12N-513](#) [CTL-16-090](#) [CTR06-](#)
[5100SY](#) [M55302/63A20H](#) [M55302/66-30H](#)