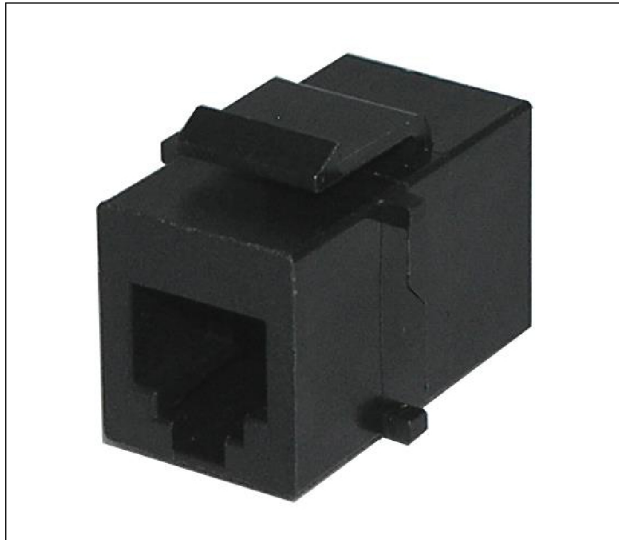


## RJ12 6p6c keystone coupler



### **RJ12 6p6c keystone coupler (KCK66)**

This RJ12 (6p6c) keystone coupler snaps into any keystone outlet or empty keystone patch panel. This enables the use of pre-terminated telephone cables and saves time by eliminating termination and testing.

#### ***Features***

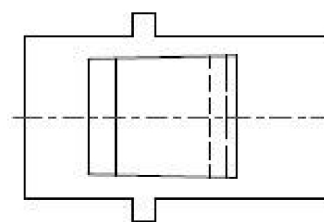
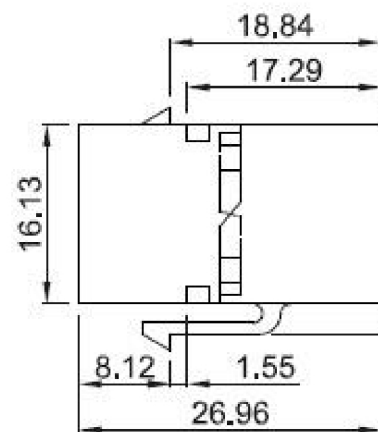
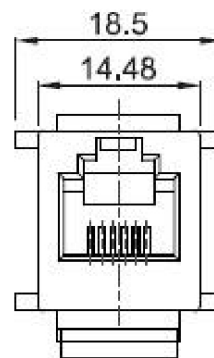
- RJ11 and RJ12 (6p4c + 6p6c) high quality keystone coupler
- Designed to fit industry standard keystone outlets and patch panels
- Compatible 16 and 24 port patch panels available with or without cable management
- Available as part of our innovative new panel mount coupler (KCK66pm), designed for easy mounting on panels of virtually any thickness

#### ***Specifications***

- Dimensions: 27mm x 18.5mm x 16mm
  - Colour: black
  - Housing: ABS UL94V-0
-

ROHS Compliant

- Features :**
- Jack insertion life >750 mating cycles
  - IDC Insertion life >250 mating cycles
  - Operating temperature : -40°C ~ +60°C
- Electrical :**
- Contact resistance : 20m ohm
  - DC Current rating : 1,5Amps
  - DC resistance : Max.0.1 ohm
  - Insulation Resistance : 500m ohm
  - Dielectric withstanding voltage : 1000V



TOLERANCE	
.XXXX	—
.XXX	0.10
.XX	0.25
.X	0.38

MATERIAL	
CATEGORY	<input type="checkbox"/> CAT.5E <input type="checkbox"/> CAT.6 <input checked="" type="checkbox"/> CAT.3 <input type="checkbox"/> OTHER _____
HOUSING	ABS UL94V-0
CONTACT	0.35 mm DIAMETER PHOSPHOR BRONZE GOLD PLATED OVER NICKEL
GOLD-PLATING	<input type="checkbox"/> 0,0762um/3u Inch <input checked="" type="checkbox"/> 0,15um/6u Inch <input type="checkbox"/> 0,38um/15u Inch <input type="checkbox"/> 0,76um/30u Inch <input type="checkbox"/> 1,27um/50u Inch
COLOR	<input type="checkbox"/> WHITE <input checked="" type="checkbox"/> BLACK <input type="checkbox"/> GREEN <input type="checkbox"/> BLUE <input type="checkbox"/> YELLOW <input type="checkbox"/> RED <input type="checkbox"/> ORANGE <input type="checkbox"/> IVORY <input type="checkbox"/> OTHER _____
TYPE OF PRODUCT	<input checked="" type="checkbox"/> UNSHIELD <input type="checkbox"/> SHIELD : 0,25mm THICKNESS COPPER ALLOY WITH NICKLE PLATED.
REV.	DESCRIPTION
1	2

P/NO.	KCH
ITEM: Inline Coupler	CO.
DR. Wakka 2014/06/10	APPD.
<b>TUK L</b>	

ENG.	APPROVAL
3	4

## X-ON Electronics

Largest Supplier of Electrical and Electronic Components

*Click to view similar products for [Modular Connectors](#) / [Ethernet Connectors](#) category:*

*Click to view products by [Tuk](#) manufacturer:*

Other Similar products are found below :

[RJE231881317T](#) [MP1010RX-1000](#) [MP44RX-1000](#) [GAX-3-66](#) [GAX-8-62](#) [93606-0253](#) [GD-A-44](#) [GDCX-PA-66-50](#) [GDCX-PN-64](#) [GDCX-PN-66](#) [GDCX-PN-66-50](#) [GDLX-A-66](#) [GDLX-A-88](#) [GDLX-N-66](#) [GDLX-S-88K](#) [GDTX-S-88-50](#) [GDX-PA-1010](#) [GLX-N-1010M-BLK](#) [GLX-N-44M](#) [GLX-S-88M-BLK](#) [GMX-N-1010](#) [GMX-S-1010](#) [GMX-S-66](#) [GMX-SMT2-N-1010](#) [GMX-SMT2-N-64-50](#) [GMX-SMT2-S6-88](#) [GMX-SMT4-N-88](#) [GPX-2-64](#) [GRT1-BT1-5](#) [GSGX-N-2-88](#) [GSX-NS2-88-3.05](#) [GSX-NS2-88-3.05-50](#) [GSX-NS-88-3.05-30](#) [GSX-NS-88-3.05-50](#) [GSX-NS-88-3.68](#) [1-1775629-2](#) [GWLX-S-88-GR](#) [GWLX-S9-88-YG](#) [1300500326](#) [1300500227](#) [1300530003](#) [1300570002](#) [1324640-4](#) [RJ11FTVC2G](#) [RJ11FTVC2N](#) [RJFTVX2SA1G](#) [132764-001](#) [1400000](#) [1413176](#) [1413235](#)