

# SERIES 0100 - SINGLE-POLE TOGGLE SWITCHES

TO 2 A 250 V AC



## PRODUCT FEATURES



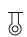



- ◆ Robust and powerful toggle switch with 50 000 mechanical switching cycles
- ◆ Central fastening with nut M12
- ◆ Metal or plastic lever

## ON REQUEST

- ◆ Other terminal variants

Mechanical life endurance	5E4	
Material	actuator housing	metal / PA (product-dependent)
	terminals	CnZn nickel-plated / Duroplast (base) / chromated galvanized steel (bracket plate) silver plated



single-pole	Actuator color / printing	Housing color	2 A 250 V 1E3	Terminal type	Contact distance in mm	Contact material	Miscellaneous	Stock version
<b>ON/OFF switch (SPST)</b>								
<b>0100.1201</b>			●		≈ 3	CuZn silver plated	actuating torque 45.0 ±14.0 Nmm	●
<b>0100.2901</b>			●		≈ 3	CuZn silver plated	actuating torque 45.0 ±14.0 Nmm metal lever	●

ROCKER SWITCHES

PUSHBUTTON SWITCHES

TOGGLE SWITCHES

SLIDE SWITCHES

ROTARY SWITCHES

FOOT SWITCHES

FACT AND KEY SWITCHES

SNAP-ACTION SWITCHES

MICRO-SIGNAL SWITCHES

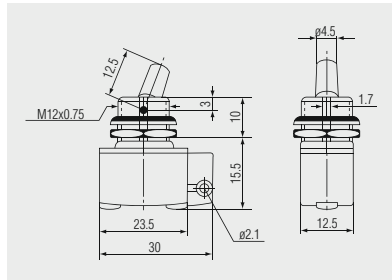
SENSORS

# SERIES 0100 - SINGLE-POLE TOGGLE SWITCHES

TO 2 A 250 V AC



Basic type 0100



 Solder terminal



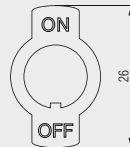
Identificatin plate  
240.001.011



Identification plate of aluminum for plugging on with black inscription "ON" and "OFF"



Identification plate  
240.002.011



Identification plate of CuZn nickel-plated for plugging on and with twist protection and stamped inscription "ON" and "OFF"

Further information under

[WWW.MARQUARDT-SWITCHES.COM](http://WWW.MARQUARDT-SWITCHES.COM)

## X-ON Electronics

Largest Supplier of Electrical and Electronic Components

*Click to view similar products for [Toggle Switches](#) category:*

*Click to view products by [Marquardt](#) manufacturer:*

Other Similar products are found below :

[8A1-C-222](#) [60012L](#) [6006L](#) [6663](#) [7101MD9V30GE](#) [7101SPDV30BE](#) [7103SDV30BE](#) [7105D](#) [7108P3YAV2BE](#) [71YY50282](#)  
[7201MD9AVBE](#) [7301K38](#) [7306K36](#) [7310K36](#) [7314K36](#) [7506K4](#) [7592K6](#) [7691K14](#) [7700K1](#) [8396K108](#) [8824K14](#) [8828K13](#) [G2VX](#) [G3VX](#)  
[PS83-121G](#) [A101MD9AB04](#) [A101SD9AB04](#) [A101SDCQ04](#) [A103SD9AQ04](#) [A107TZB04](#) [A123P32YZQ](#) [A123S1YZG](#) [A127S1YCQ](#) [1-](#)  
[1825192-0](#) [A131S1YZQ](#) [A201SCWZB04](#) [A207SYCB04](#) [A208J61ZQ0004](#) [A221K12KAG](#) [A221S1YZQ](#) [A221T1TCQ](#) [A232K12KZQ](#)  
[A232M1YCQ](#) [A323S1CWZQ](#) [A423S1CWZG-M8](#) [A423S1YZQ](#) [12149A-3V](#) [12156AX408](#) [12147AGKX679](#) [12149AD2G0383VX408](#)