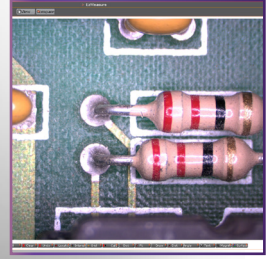
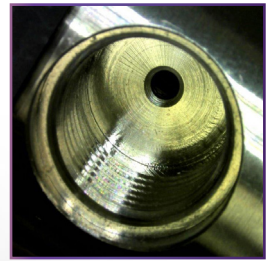




AVEN



## Mighty Cam USB 5M CMOS Camera With ezMeasure Software

### Full Rich Color the Moment You Plug In

The Mighty Cam is a new generation digital color camera designed for scientific microscopy, imaging, documentation, reporting and analysis. Advanced chip technology guarantees excellent color reproduction with a fast frame rate. The advanced ezMeasure software offers an intuitive user interface for measurement, annotation, image analysis, etc.

### Features

- 5M CMOS Sensor (2592 x 1944)
- Easy Plug and Play USB 2.0 Interface
- Compact and Light Weight
- Versatile C/CS Lenses Mount

#### MIGHTY CAM USB 5M CMOS CAMERA WITH ezMEASURE SOFTWARE

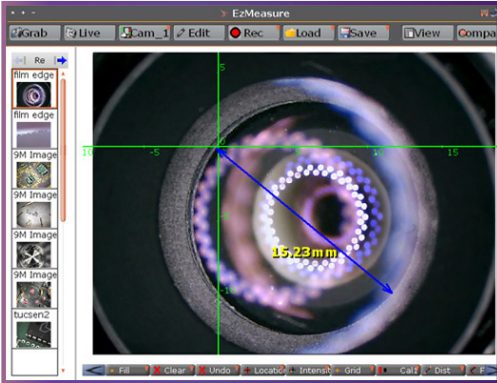
<b>SENSOR SIZE</b>	1/2 .5"
<b>SENSOR TYPE</b>	CMOS
<b>FRAME RATE</b>	6fps (2592 x 1944)
<b>MEGAPIXEL</b>	5 MP (2592 x 1944)
<b>PIXEL SIZE</b>	2.2 µm
<b>WHITE BALANCE</b>	Automatic/Manual
<b>EXPOSURE</b>	Automatic/Manual
<b>COLOR</b>	RGB
<b>MOUNT</b>	C/CS Mount
<b>RESOLUTION</b>	2592 x 1944
<b>OUTPUT</b>	USB 2.0
<b>PRODUCT WIDTH</b>	45 mm / 1.77"
<b>PRODUCT HEIGHT</b>	47 mm / 1.85"
<b>PRODUCT DEPTH</b>	56 mm / 2.20"
<b>MOUNTING PLATE</b>	Allows mounting to a 1/4" screw
<b>TYPE OF SHUTTER</b>	Rolling
<b>PACKAGE CONTENTS</b>	Camera, USB 2.0 Cable, Ring for C Mount Lens, Lens Cap Cover, and ezMeasure Software

Part #	Description
<b>26100-243</b>	Mighty Cam USB 5M CMOS Camera with ezMeasure Software

# EZ Measure Software provided with the Mighty Cam

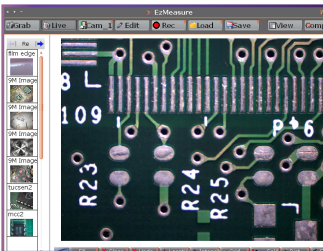
## Measure, Annotate and Analyze with Ease

ezMeasure® allows you to measure, annotate, and analyze your images with just a few clicks. Create written reports that include the raw data, plus the images involved. EZ Measure Software allows you to view images from a camera or a saved folder. These can be viewed, replayed and analyzed. Recent projects are easily accessible with thumbprint menu.



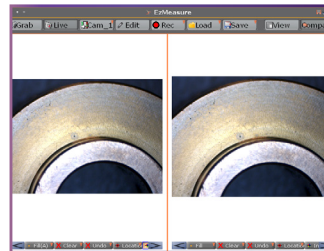
## Capture High Quality Images

Create enhanced still photos or record a live video stream for play back.



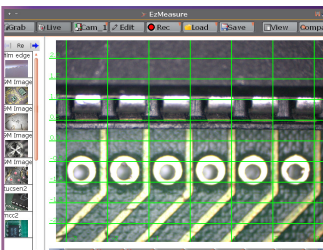
## Simultaneous Live Views

Use two cameras on same work station for side by side live views.



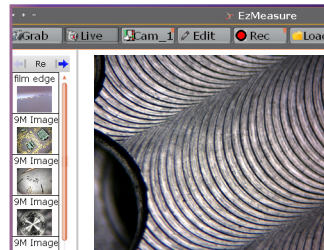
## Grid Feature

Locate and compare with ease, with multiple grid views.



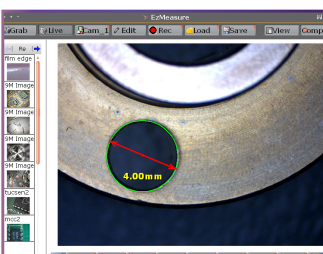
## Customize the Layout

Set the layout to your personal preferences and save your unique settings for future use.



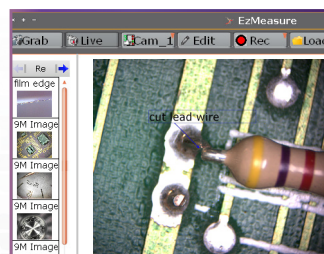
## Measurement Tools

- Set the image pixels to real units eg. mm or inches.
- Record and save multiple calibration settings.
- Measure the distances between different points, or edges.



## Text Button

Allows annotations directly onto the screen. The user has the ability to adjust the size and the appearance of the text.



## Additional Features

- Fill Mode Tool determines the image size: Fit-to-Fill the entire viewing area, Zoomed in, or Preserve the Original aspect ratio.
- Location Button provides a cursor for the X,Y,Z-axis coordinates. Moving the Cursor with the mouse updates the coordinates.
- And many many more ...

## **X-ON Electronics**

Largest Supplier of Electrical and Electronic Components

*Click to view similar products for [aven](#) manufacturer:*

Other Similar products are found below :

[26700-209-PLR](#) [18013TT](#) [26800B-371](#) [26800C-534](#) [10825F](#) [10826S](#) [10827S](#) [26700-401](#) [26200B-215](#) [26700-140-L05X](#) [10311S](#) [10335](#)  
[10328](#) [26505-LED-XL3](#) [26527](#) [10360-ER](#) [10829F](#) [12031](#) [26800B-339](#) [26200B-207](#) [26226](#) [17400-4181](#) [17510-B51](#) [18053TT](#) [18069TT](#)  
[26700-204](#) [26700-215](#) [26800C-541](#) [17400](#) [18072-ER](#) [26700-212](#) [26800C-551](#) [26200B-211](#) [10822S](#) [10827F](#) [10828S](#) [26200B-214](#) [10179DS](#)  
[10188D](#) [10189D](#) [18114CS](#) [26800B-373-8](#) [26800B-552](#) [26800B-551](#) [18762](#) [26501-LED-INX](#) [26535](#) [26700-400-L-4XLF](#) [17551LF](#) [26111](#)