



Panasonic PLC Starter Kit (KITFP0RC14RS)

Contents:	- Panasonic PLC FP0RC14R
	- Programming software Control FPWIN Pro
	- USB programming cable

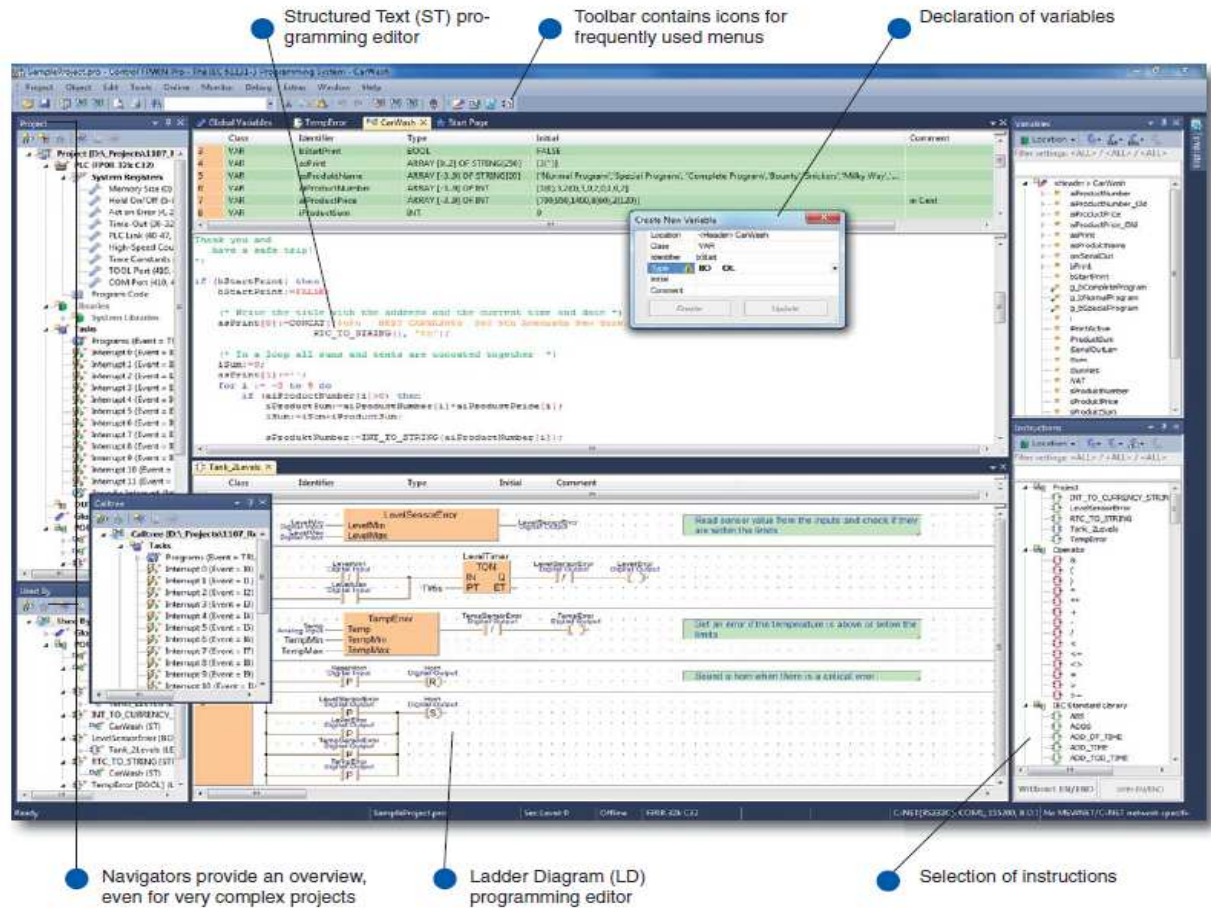
FP0R PLC (FP0RC14R)

Number of inputs	8 (24V DC)
Number of outputs	6 relays
Output capacity	2A
Digital I/Os (max.)	110
Processing speed	Up to 3000 steps: 0.08μs/step (basic instruction) After 3000 steps: 0.58μs/step (basic instruction)
Program capacity	16000 steps
Data register (DT)	12315 words
Memory backup (Flash ROM)	Backup with F12, P13 instruction for all areas
	Auto backup when power is off:
	Counter: 16 points
	Internal relay: 128 points
High-speed counter	Single-phase: 6 channels (50kHz); 2-phase: 3 channels (15kHz)
Ports	1 x RS232 port
	1 x Mini USB port
Other functions	Editing in RUN mode, download in RUN mode (including comments);
	8-character password setting, and program upload protection
Operating voltage	24V DC (± 10%)

Panasonic Control FPWIN PRO

- 5 programming languages: IL (Instruction List), LD (Ladder Diagram) , FBD (Function Block Diagram)
SFC (Sequential Function Chart) , ST (Structured Text)
- 8 languages available: English, German, French, Italian, Spanish, Japanese, Korean, Chinese
- Well-structured through program organization units, task and project management
- Remote programming, service, and diagnostics via modem or Ethernet
- Extensive comments and online documentation created hand in hand with the program
- Minimum program size through optimized compiler
- Powerful debugging and monitoring tools provide information on the current status of the PLC
- Comprehensive documentation and support for function blocks and libraries help to get your hardware running in record time while maintaining rigorous quality standards
- Reuse of functions and function blocks saves time
- One software for all FP-series PLCs

Control FPDIN Pro is the Panasonic programming software developed according to the international standard IEC 61131-3 (for Windows® XP/Vista/Windows 7). We were one of the first PLC manufacturers to offer a programming software that complies to this standard. This new version is a result of experience gained over many years.



Panasonic Electric Works Europe AG

Rudolf-Diesel-Ring 2
 83607 Holzkirchen
 Tel: +49-(0)8024-648-0
 Fax: +49-(0)8024-648-111
 e-mail: info-eu@eu.pewg.panasonic.com
 www.panasonic-electric-works.com

Panasonic[®]

X-ON Electronics

Largest Supplier of Electrical and Electronic Components

Click to view similar products for [panasonic](#) manufacturer:

Other Similar products are found below :

[ECE-A1HKAR47](#) [ELK-EA102FA](#) [ELC-09D151F](#) [EEC-S0HD224H](#) [ELL-5PS3R3N](#) [HC2-H-DC48V-F](#) [HL2-HP-AC120V-F](#) [HL2-H-DC12V-F](#) [HL2-HP-DC12V-F](#) [HL2-HP-DC6V-F](#) [HL2-HP-DC24V-F](#) [HC4-H-DC24V](#) [HL2-HTM-DC24V-F](#) [HL2-HTM-AC24V-F](#) [HC4-H-AC24V](#) [HC4-H-AC120V](#) [EEC-RG0V155H](#) [AZH2031](#) [RP-SDMF64DA1](#) [EEF-UD0K101R](#) [EVM-F6SA00B55](#) [RP-SMLE08DA1](#) [ELC-12D101E](#) [ERA-3YEB272V](#) [EEC-RF0V684](#) [ERA-3YEB153V](#) [ELC-3FN2R2N](#) [ERA-3YEB512V](#) [ERJ-1GEJ564C](#) [ERZ-V20R391](#) [ETQ-P3W3R3WFN](#) [ELL-ATV681M](#) [ELK-EA100FA](#) [EEF-UD0J101R](#) [LC-R121R3P](#) [ERA-3YEB303V](#) [ERZ-V05V680CB](#) [EEF-UE0K101R](#) [ELK-E101FA](#) [EEC-S0HD224V](#) [EVQ-PAC05R](#) [ELK-EA222FA](#) [LT4H-DC24V](#) [LT4HL8-AC24V](#) [LT4HW-AC24V](#) [LT4HWT8-AC240V](#) [LT4HWT-AC240VS](#) [CX-444-P-Z](#) [CY-122A-P](#) [ETQ-P5M470YFM](#)