

# EAO – Your Expert Partner for Human Machine Interfaces

K14-131.025518 - Illum' pushbutton actuator

## 14-131.0252 - Illuminated pushbutton actuator



*Attention: The preview is based on a sample product. This can differ from your current configuration.*

### necessary components



**704.609.9**  
Marking plate for lens plastic and metal

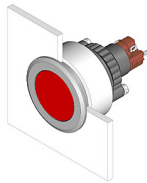


**704.602.5**  
Lens plastic

# EAO – Your Expert Partner for Human Machine Interfaces

## K14-131.025518 - Illum' pushbutton actuator

### 14-131.0252 - Illuminated pushbutton actuator



*Attention: The preview is based on a sample product. This can differ from your current configuration.*

#### Mounting

Design flush

#### Other Attributes

Weight 0.013 kg  
Diode 1N4007 no value

#### IP-Rating

Front protection IP 67

#### Connection Method

Terminal Solder

#### Actuator

Switching action Momentary

#### Switching element

Switching system Snap-action switching element  
Switching current 5 A  
Contacts 1 NC + 1 NO  
Contact material Gold  
Switching voltage 250 V AC

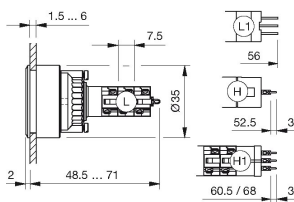
#### Function

Illuminated pushbutton

# EAO – Your Expert Partner for Human Machine Interfaces

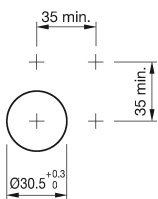
14-131.02555518 - Illum' pushbutton actuator

## Dimensions

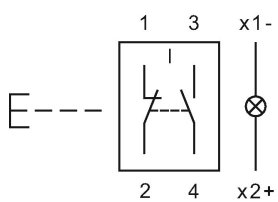


L = Solder terminal

## Mounting cut-outs



## Wiring diagram



## Legend

Contacts: NC = Normally closed, NO = Normally open  
Switching action: B = Momentary

# EAO – Your Expert Partner for Human Machine Interfaces

K14-131.0255518 - Illum' pushbutton actuator

## 704.609.9 - Marking plate for lens plastic and metal



*Attention: The preview is based on a sample product. This can differ from your current configuration.*

## Other Attributes

Weight	0.001 kg
Marking plate colour	white
Marking plate material	Plastic
Marking plate optics	translucent
Marking plate illumination height	LED and filament lamp round, flush

# EAO – Your Expert Partner for Human Machine Interfaces

K14-131.0255518 - Illum' pushbutton actuator

## 704.602.5 - Lens plastic



*Attention: The preview is based on a sample product. This can differ from your current configuration.*

### Other Attributes

Weight	0.001 kg
Dimension	Ø 23.7 mm
height	round, flush

### Operating-/Indication part

Lens optics	transparent
Lens colour	green
Lens material	Plastic
Lens profile	flat
Lens illumination	illuminative

# EAO – Your Expert Partner for Human Machine Interfaces

K14-131.025518 Illum' pushbutton actuator

## 704.955.1 - Front bezel set for indicator and pushbutton, flush design



*Attention: The preview is based on a sample product. This can differ from your current configuration.*

### Mounting

Mounting cut-out Ø 30.5 mm  
Design flush

### Front

Front shape round  
Front dimension Ø 35 mm  
Front ring material Aluminium  
Front ring colour natural anodized

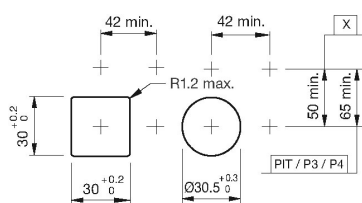
### Other Attributes

Weight 0.015 kg

# EAO – Your Expert Partner for Human Machine Interfaces

## 704.955.1 - Front bezel set for indicator and pushbutton, flush design

### Mounting cut-outs



PIT = Push-in terminal

### Additional information

The colour of anodized aluminium parts can vary due to technical production reasons

## X-ON Electronics

Largest Supplier of Electrical and Electronic Components

*Click to view similar products for [eao manufacturer](#):*

Other Similar products are found below :

[01-951.5](#) [21-931.0](#) [01-261.022](#) [02-072.001](#) [61-0029.0](#) [61-1300.0](#) [61-221.50D](#) [61-2601.0/D](#) [61-2701.0/D](#) [61-8640.11](#) [61-8720.17](#) [704.012.0](#)  
[704.062.218](#) [704.113.0](#) [704.117.0](#) [704.121.0](#) [704.411.018I](#) [704-6012](#) [704.901.1](#) [704.902.3](#) [704-9051](#) [704.950.0](#) [EUS-704.000.7](#) [82-](#)  
[4151.2144](#) [82-4153.1000](#) [84-8515.8640](#) [92-343.400](#) [95-900.005](#) [14-136.025K](#) [14-810.910](#) [200-4000-00](#) [200-4001-00](#) [22-212.011](#) [95-](#)  
[900.009](#) [22-225.011](#) [22-901.2](#) [31-426.036](#) [45-1231.21N6.000.101](#) [45-2134.4F10.000](#) [45-280X.1C90.003](#) [45-2C37.1920.000](#) [45-](#)  
[2T00.10E0.000](#) [51-401.036K](#) [51-901.4](#) [31-953.3](#) [31-955.4](#) [41-461.036](#) [41-908.5/5](#) [45-1131.3150.000.101](#) [45-2131.2150.000](#)