

P/N LEGEND
 A1001 WR-S-XP XXX
 ① Series No.
 ② Connector type: WR=Wright angel
 ③ Mounting type: S=SMT without post
 ④ No. of circuits
 ⑤ Option code:
 Blank=Nylon 6T,UL94V-0,Color Natural(Beige)
 Contacts/Matte Tin-plated
 Solder tabs/Matte Tin-plated
 D01 =Nylon 6T,UL94V-0,Color Natural(Beige)
 Contacts/Gold-flash and
 Solder tabs/Gold-flash
 D02 =Nylon 6T,UL94V-0,Color Natural(Beige)
 Contacts/Gold-flash 3u" and
 Solder tabs/Gold-flash
 D11 =Nylon 6T,UL94V-0,Color Natural(Black)
 Solder tabs/Gold-flash and
 Solder tabs/Gold-flash
 D12 =Nylon6T,UL94V-0,Color Natural(Beige)
 Contacts/Gold-flash and
 Solder tabs/Gold-flash

Circuit	Dimensions		
	No.	A	B
02P	1.00	4.00	2.45
03P	2.00	5.00	3.45
04P	3.00	6.00	4.45
05P	4.00	7.00	5.45
06P	5.00	8.00	6.45
07P	6.00	9.00	7.45
08P	7.00	10.00	8.45
09P	8.00	11.00	9.45
10P	9.00	12.00	10.45
11P	10.00	13.00	11.45
12P	11.00	14.00	12.45
13P	12.00	15.00	13.45
14P	13.00	16.00	14.45
15P	14.00	17.00	15.45
16P	15.00	18.00	16.45
17P	16.00	19.00	17.45
18P	17.00	20.00	18.45
19P	18.00	21.00	19.45
20P	19.00	22.00	20.45
24P	23.00	25.00	23.45

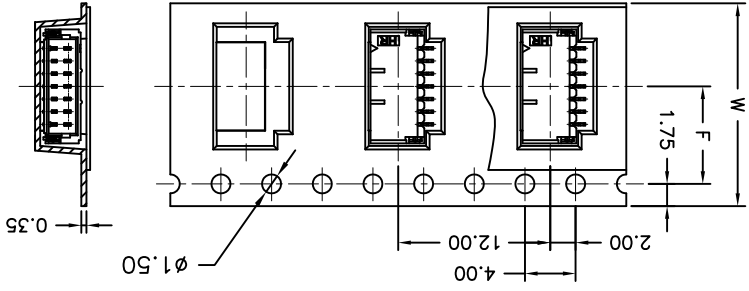
SPECIFICATIONS
 Current Rating: 1A AC,DC
 Voltage Rating: 50V AC,DC
 Temperature Range: -25°C ~ +85°C
 Contact Resistance: 20mΩ Max.
 Insulation Resistance: 100MΩ Min.
 Withstanding Voltage: 500V AC/minute
 Pin Material: Phosphor Bronze
 Solder Tabs: Brass
 Water: Nylon 6T,UL94V-0
 Cap: Nylon 6T,UL94V-0
 Color: Black & Beige

REV.	B5	DESCRIPTION	EN110110449	DATE	2011.11.29	NAME	陳敏	X.XX±0.15	ANGLE	APPROVED BY	蕭惠鳳	2002.05.28	GENERAL TOLERANCE	2002.05.28	APPROVED BY	蕭惠鳳	2002.05.28	SCALE	1 of 2	SHEET	UNIT	mm	TITLE:	1.00mm PITCH 90° WAFER-SMT TYPE	DRAW NO.:	A1001WR-S-XP	REV.	B5
------	----	-------------	-------------	------	------------	------	----	-----------	-------	-------------	-----	------------	-------------------	------------	-------------	-----	------------	-------	--------	-------	------	----	--------	------------------------------------	-----------	--------------	------	----

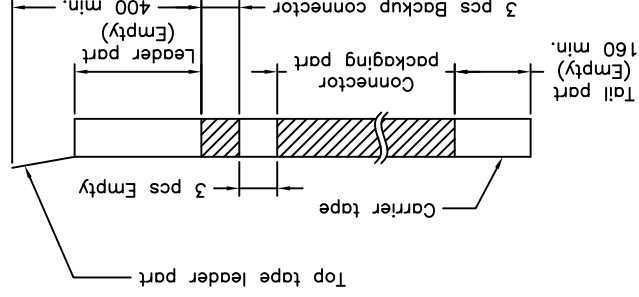
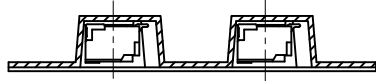
燦達電子工業股份有限公司
 JOINT TECH ELECTRONIC IND. CO., LTD.



02~14 Contacts



Unreeling direction



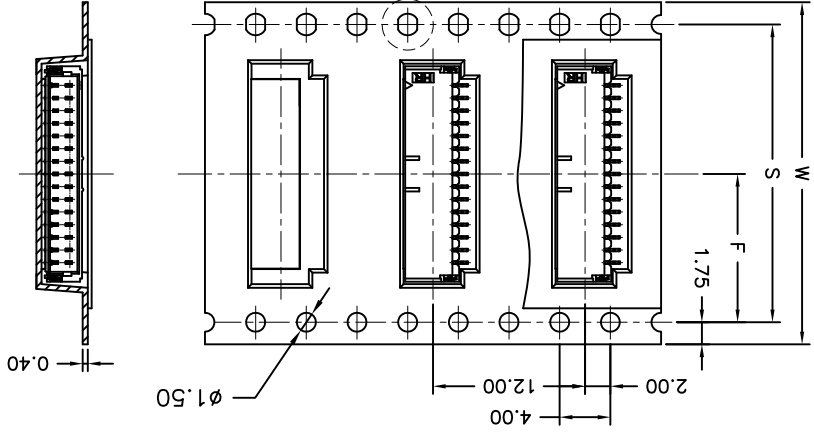
Number of Contacts

Q2P	12	5.50	1,000	
Q3P	16	7.50	1,000	
Q4P	16	7.50	1,000	
Q5P	16	7.50	1,000	
Q6P	16	7.50	1,000	
Q7P	24	11.50	1,000	
Q8P	24	11.50	1,000	
Q9P	24	11.50	1,000	
10P	24	11.50	1,000	
11P	24	11.50	1,000	
12P	24	11.50	1,000	
13P	24	11.50	1,000	
14P	24	11.50	1,000	
15P	32	14.20	28.40	1,000
16P	32	14.20	28.40	1,000
17P	32	14.20	28.40	1,000
18P	32	14.20	28.40	1,000
19P	32	14.20	28.40	1,000
20P	44	20.20	40.40	1,000
24P	44	20.20	40.40	1,000

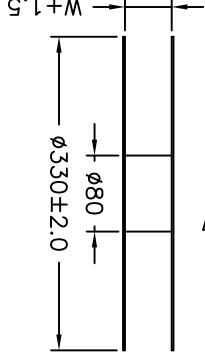
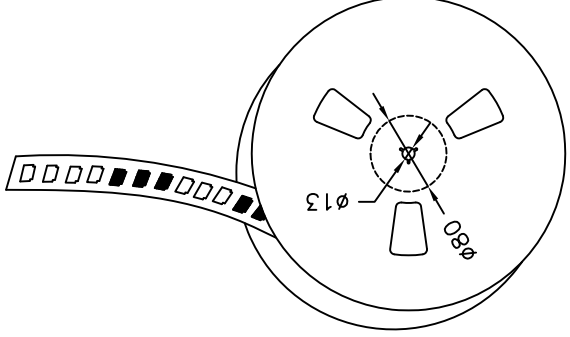
NOTE:

Material:Transparent
Anti-static Polystyrene.

15~24 Contacts



Unreeling direction



REV.	DESCRIPTION	DATE	NAME	X.XXX±0.05
B5	EN110110449	2011.11.29	陳敏	X.XX±0.15
				X.X±0.25
				ANGLE
				GENERAL TOLERANCE
				2004.12.29
				修正一
				APPROVED BY
				2 of 2
				mm
				SCALE
				SHEET
TITLE:				
1.00mm PITCH				
90° WAFER-SMT TYPE				
TAPING SPEC.				
DRAW NO.:				
A1001WR-S-XP				
REV.	B5			

燦達電子工業股份有限公司
JOINT TECH ELECTRONIC IND. CO., LTD.

UNIT SCALE SHEET

2 of 2

APPROVED BY

2004.12.29

GENERAL TOLERANCE

X.XX±0.15

X.XX±0.05

ANGLE

X-ON Electronics

Largest Supplier of Electrical and Electronic Components

Click to view similar products for [I/O Connectors](#) category:

Click to view products by [Joint manufacturer](#):

Other Similar products are found below :

[571763P](#) [58098-0628](#) [61-168618-12P](#) [D38999/20FJ29SB L/C](#) [72.250.1628.2](#) [72.250.2428.2](#) [74720-0505](#) [747680210](#) [76.350.0729.0](#) [76871-1403](#) [FCN-244F080-G/1](#) [FCN-260A9920](#) [FCN-268D024-G/2F#10X-R10](#) [MP-5T180MUNNA-005](#) [MP-5XRJ45UNNB-003](#) [PCS-E50FA](#) [PCS-XE26LKA](#) [PCS-XE26MA+](#) [PCS-XES68MS+](#) [G38A71314B](#) [91-569719-35R](#) [9776-18-6](#) [DX40-50P\(55\)](#) [1571250010](#) [157-22500-3](#) [MS3471L14-19P L/C](#) [171224-6031](#) [1888020-8](#) [91-569786-35H](#) [91-569786-35M](#) [91-644626-35P](#) [172501-4002](#) [172501-6002](#) [FCN-260C008-A/L0](#) [FCN-260C024-AL0](#) [FCN-261Z008](#) [FCN-268D008-G/1K](#) [2000314-1](#) [200331-1](#) [2007498-2](#) [PCR-E28LMDAG1+](#) [PCR-E36FC+](#) [PCS-E28FS+](#) [PCS-XE26SLFD+](#) [PCS-XE26SLFDT+](#) [G38A71214B](#) [HDRA-E68W1LFDTC-SL+](#) [HDR-E14MSG1+](#) [R88A-CNK81S](#) [CRT1-ATT02](#)